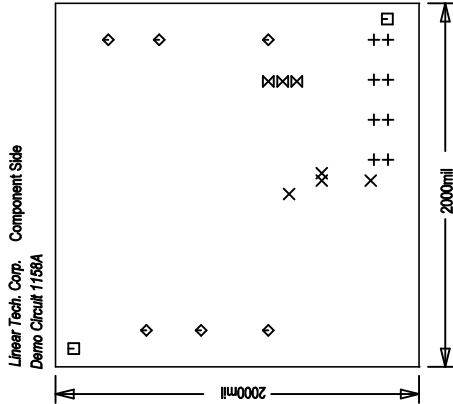
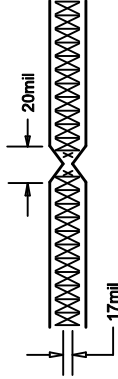


| REVISIONS | | | |
|-----------|--|------|------|
| REV | | APPR | DATE |

NOTES : Unless Otherwise Specified


1. FAB PER IPC-A-600.
2. MATERIAL: EPOXY FIBERGLASS, NEMA GRADE FR-4.
2 OZ. COPPER FINISH ON EXTERNAL LAYERS.
1 OZ. COPPER FINISH ON INTERNAL LAYERS.
THICKNESS .062 +/- .006 TOTAL OF 4 LAYERS.
FLAMMABILITY RATING: 94 V-0 MINIMUM .
3. SIZE: DIMENSIONS SHOWN AND TOLERANCES +/-0.010
0.00 ARE PRIMARY DATUMS.
4. DRILLING: DRILL HOLES PER SCHEDULE. PLATE THROUGH
HOLES WITH COPPER, .001 INCH THICK MIN. ALL
HOLE SIZES ARE SPECIFIED AFTER PLATING.
HOLE LOCATION TOLERANCES ARE +/-3MIL
INCH IN RELATION TO CENTER
5. FINISH: SMOBC USING LPI BOTH SIDES COLOR GREEN.
GOLD IMMERSION BOTH SIDES.
6. SILKSCREEN : USING WHITE NON-CONDUCTIVE EPOXY INK.
7. DO NOT ALTER ARTWORK TO ADD LOGO OR DATE CODE BUT MAY
MODIFY PAD SIZE TO MEET END FINISH.
8. PCB's SHOULD BE RoHS COMPLIANT.

9. SCORING:



| SIZE | QTY | SYM | PLATED | TOL |
|------|-----|-----|--------|---------|
| 26 | 8 | + | YES | +/-3Mil |
| 10 | 4 | X | YES | +/-3Mil |
| 70 | 2 | □ | NO | +/-3Mil |
| 94 | 6 | ◇ | YES | +/-3Mil |
| 31 | 3 | ⊗ | YES | +/-3Mil |

Fabrication Drawing

| | | | | | | | |
|-----------|--|--|---|--|--|-----|--------------|
| APPROVALS | | |  | | 1630 McCarthy Blvd. Milpitas, CA 95035 PH: (408)432-1900 | | |
| | | | | | TITLE: LTC3864ES5 Monolithic Synchronous Buck Regulator | | |
| | | | | | | | |
| | | | | | | | |
| | | | | | | | |
| | | | | | | | |
| | | | | | SIZE | NON | REV. 1 |
| | | | | | Demo Circuit 1158A | | |
| | | | | | DES-23xxxx | | Sheet 1 of 1 |
| | | | | | SCALE = NONE | | |