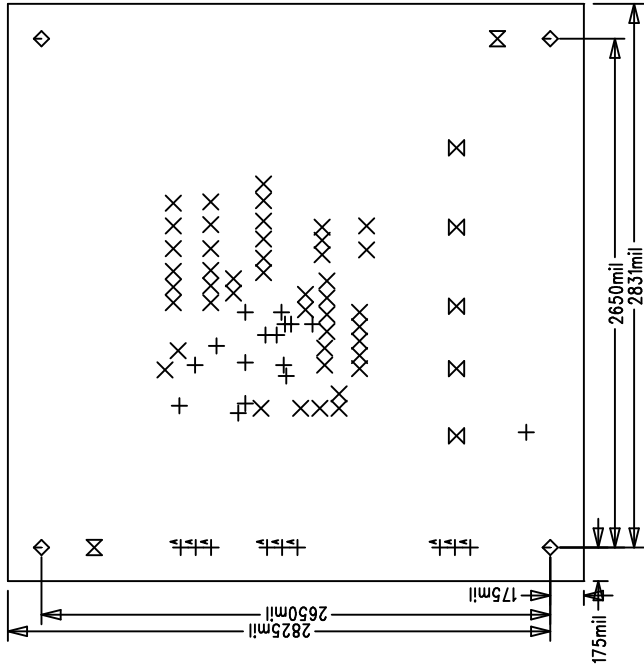


REVISIONS		
REV	APPR	DATE

NOTES: UNLESS OTHERWISE SPECIFIED

1. ARTWORK P/N DC518 REV A.
2. FAB PER IPC-A-600
3. MATERIAL: EPOXY FIBERGLASS, NEMA GRADE FR-4  
FINISHED THICKNESS TO BE .062 +/- .005 INCH  
WITH 2 OZ. COPPER ON TWO OUTER LAYERS AND  
1 OZ. COPPER ON FOUR INTERNAL LAYERS.  
FLAMABILITY RATING: 94 V-0 MINIMUM .
4. SIZE: CUT TO DIMENSIONS AND TOLERANCES SHOWN.  
0.00 ARE PRIMARY DATUMS.
5. DRILLING: DRILL HOLES PER SCHEDULE. PLATE THROUGH  
HOLES WITH COPPER, .001 INCH THICK MIN. ALL  
HOLE SIZES ARE SPECIFIED AFTER PLATING.  
HOLE LOCATION TOLERANCES ARE +/- .003  
INCH IN RELATION TO CENTER
6. FINISH: SMOBC USING LPI BOTH SIDES, GREEN PREFERRED.  
SILKSCREEN COMPONENT SIDE WITH WHITE NON-  
CONDUCTIVE INK.
7. FILL UP ALL VIAS WITH SOLDER.
8. DROP ALL UNUSED PADS ON INNER LAYERS.
9. DO NOT ALTER ARTWORK e.g. TO ADD LOGO OR DATE CODE.

Demo Circuit 518 Rev A  
LTC3704EMS



SIZE	QTY	SYM	PLTD
10	16	+	PLTD
25	45	X	PLTD
125	4	◇	PLTD
94	5	⊗	PLTD
63	2	⊗	NPLTD
31	9	A	PLTD

Fabrication Drawing

APPROVALS		LINEAR TECHNOLOGY	
DRAWN	INIT	DATE	
CHECK			
DESIGN	Rudy B.		
ENGR	G. Perica		
SCALE = NONE		DESIGN #230542	
		SHT 1 of 1	

TITLE:		LTC3704EMS (SLIC Power Supply)	
SIZE	NONE	Demo Circuit 518	REV. A

