


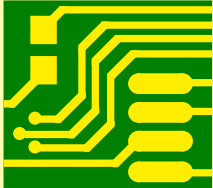
LABEL1

 Product number/revision  
Serial number

Label PCBA

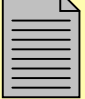
PCB

PCB1



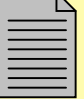
A08-2021  
ATmega168-XMINI PCB

PCBADOC1




A12-0840

TESTDOC1



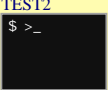
A12-0853

FW1



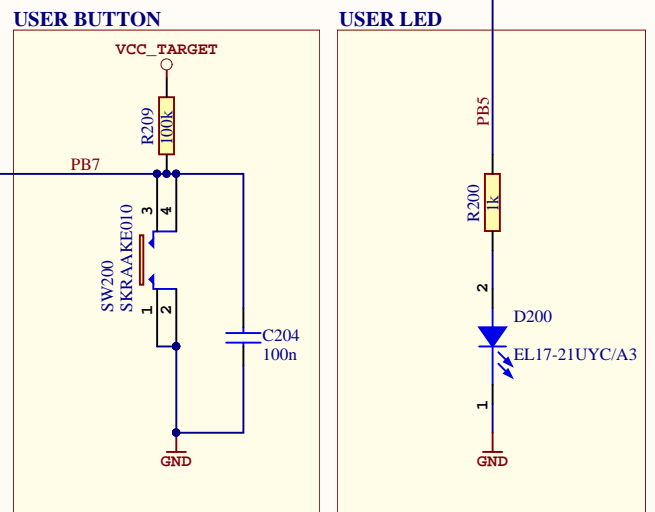
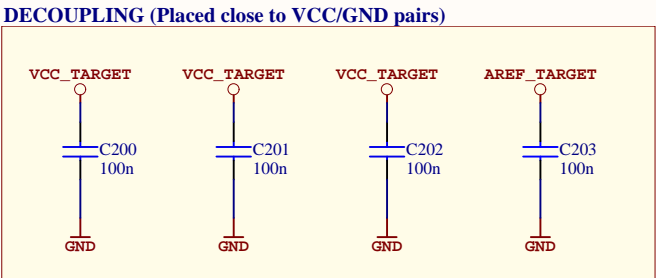
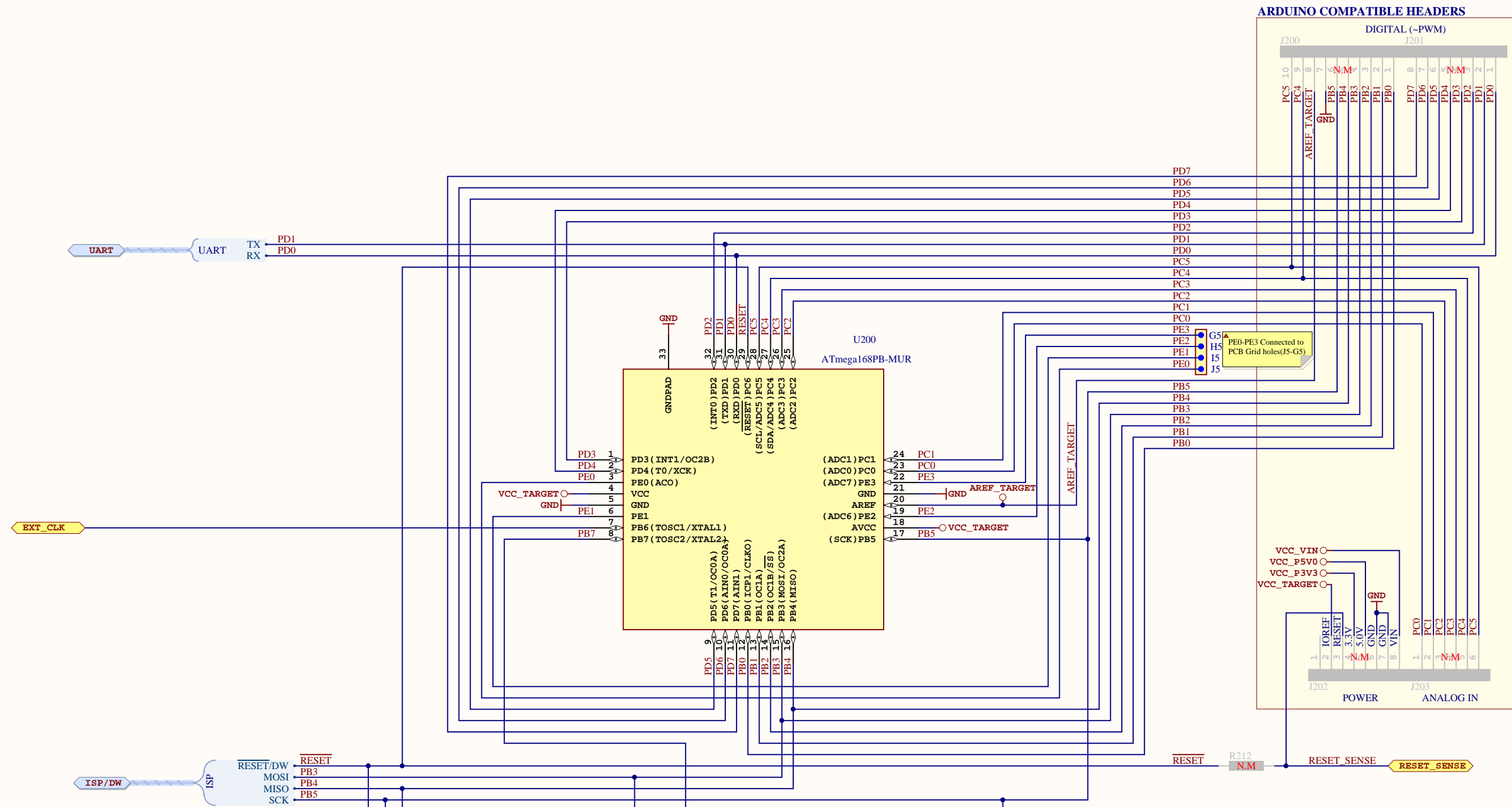
A11-0252

TEST2

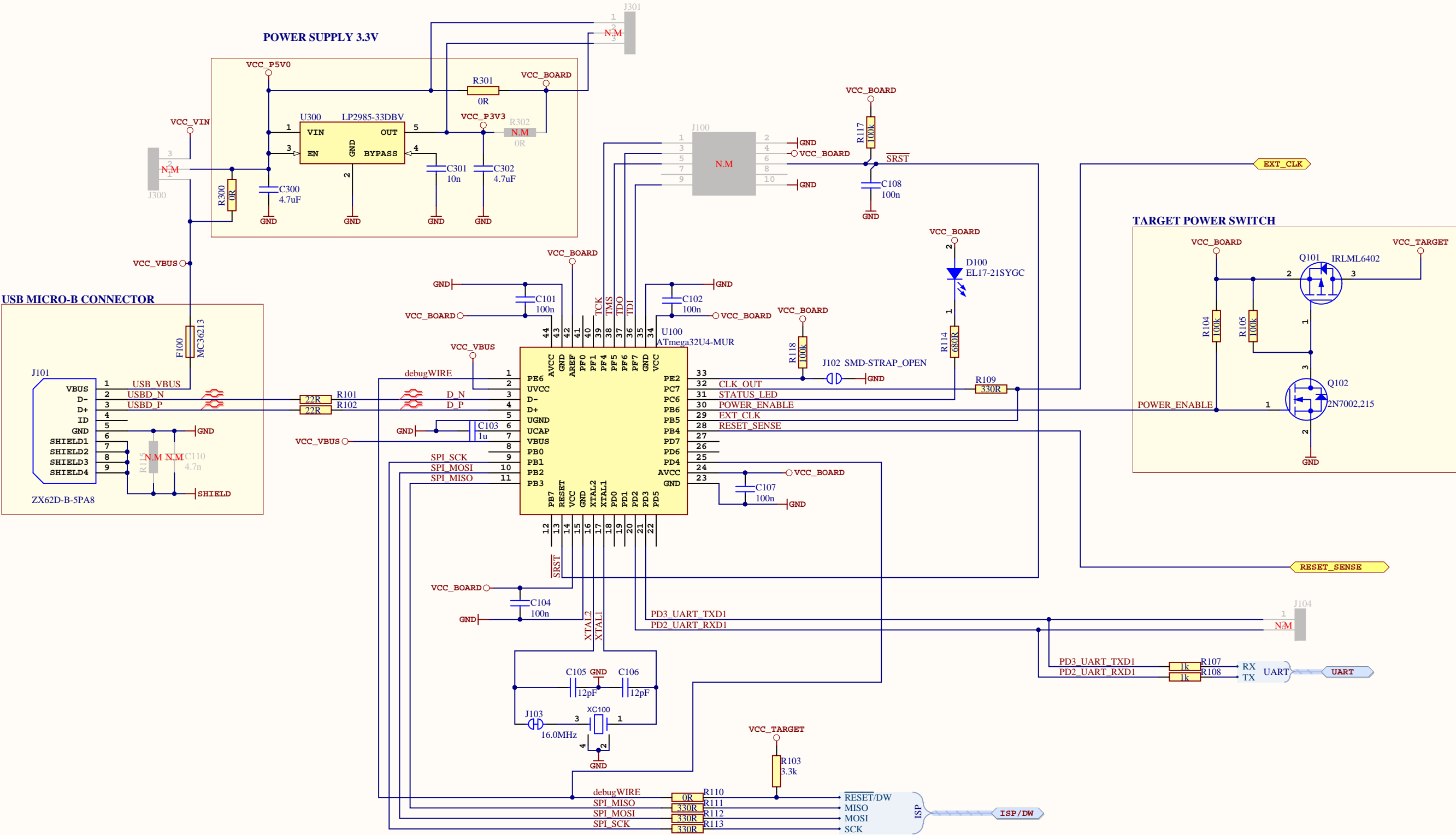


A11-0251

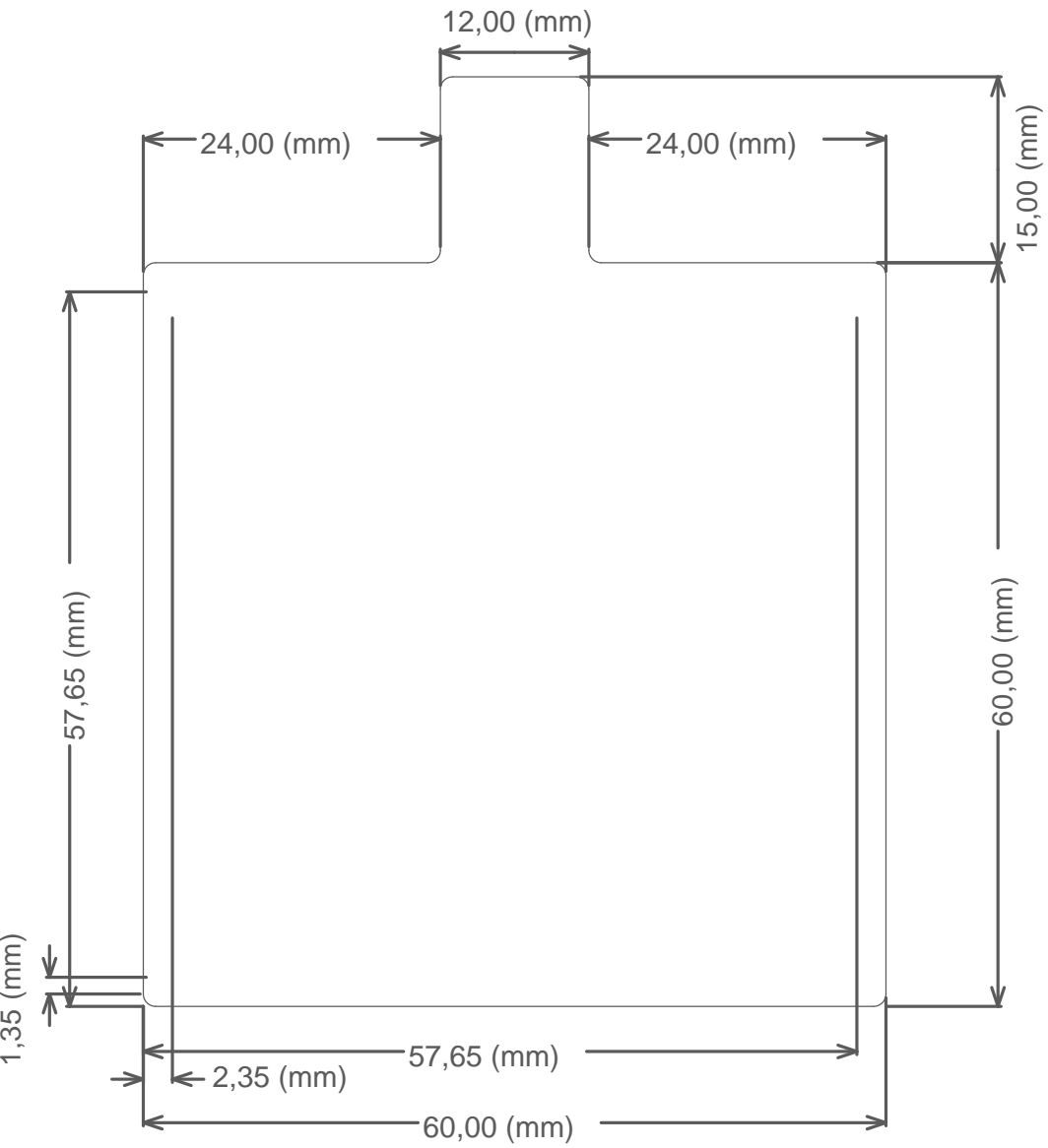
ATMEL Norway		*	 <div>Enabling Unlimited Possibilities</div>		
Vestre Rosten 79		*			
N-7075 TILLER		*			
NORWAY					
Date:	06.01.2017	13:41:19	PAGE:	1 of 3	
Document number:	A09-2222		Revision:	5	
TITLE: ATmega168PB Xplained Mini					
ATmega168PB_Xplained_Mini_TopLevel.SchDoc					

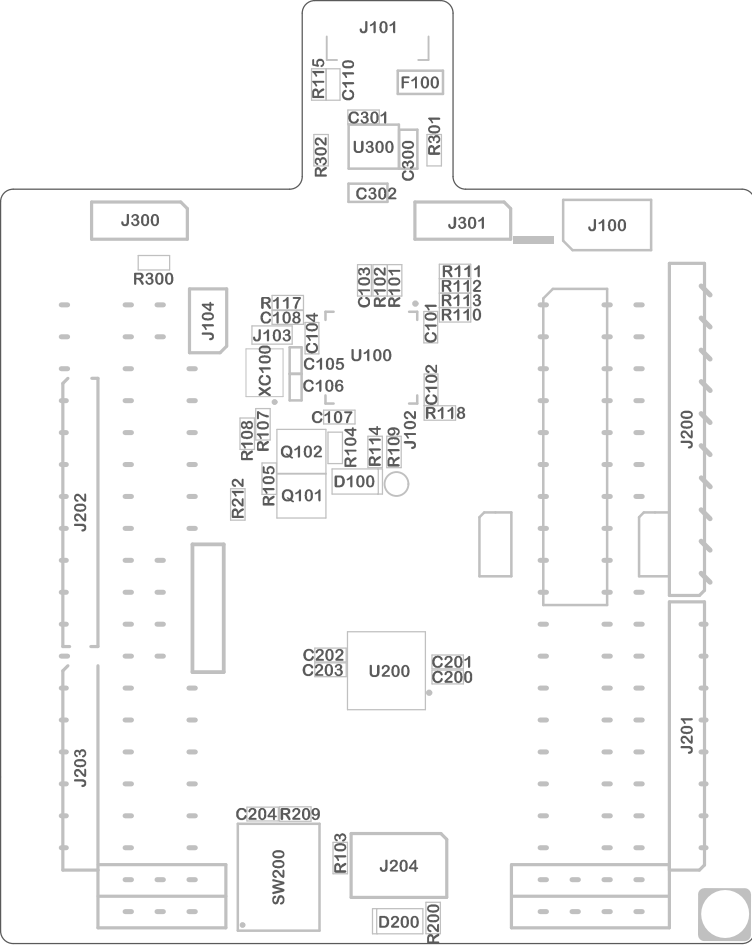


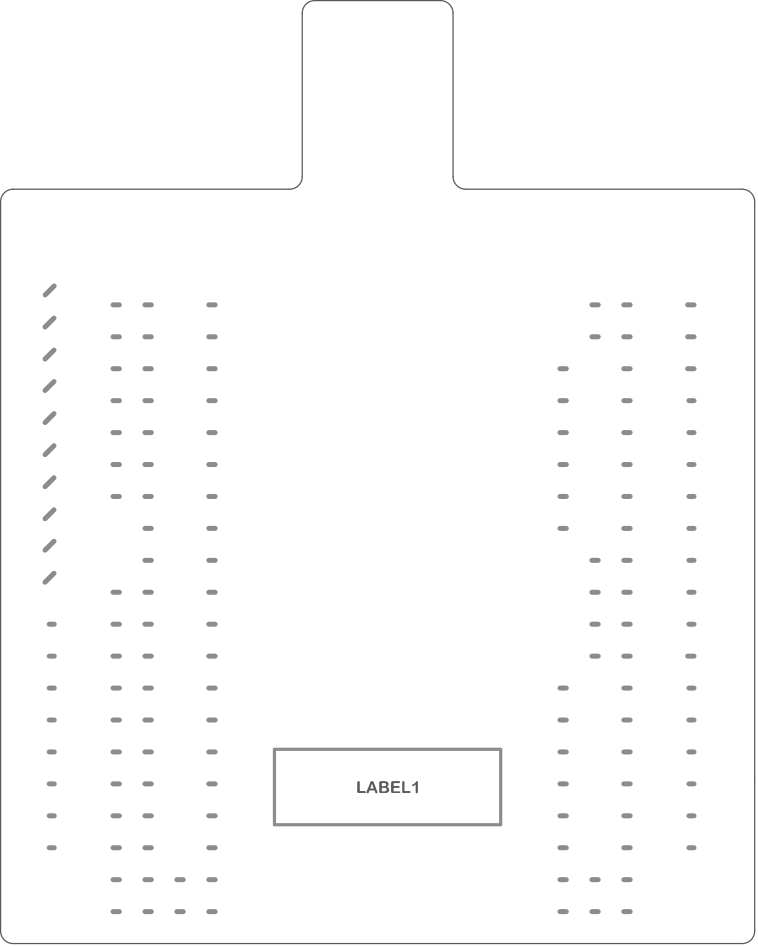
ATMEL Norway	*		 Enabling Unlimited Possibilities		
Vestre Rosten 79	*				
N-7075 TILLER	*				
NORWAY					
Date:	06.01.2017	13:41:19	PAGE:	2 of 3	
Document number:	A09-2222		Revision:	5	
TITLE: ATmega168PB Xplained Mini					
ATmega168PB Xplained Mini Target.SchDoc					



# Mechanical Dimensions

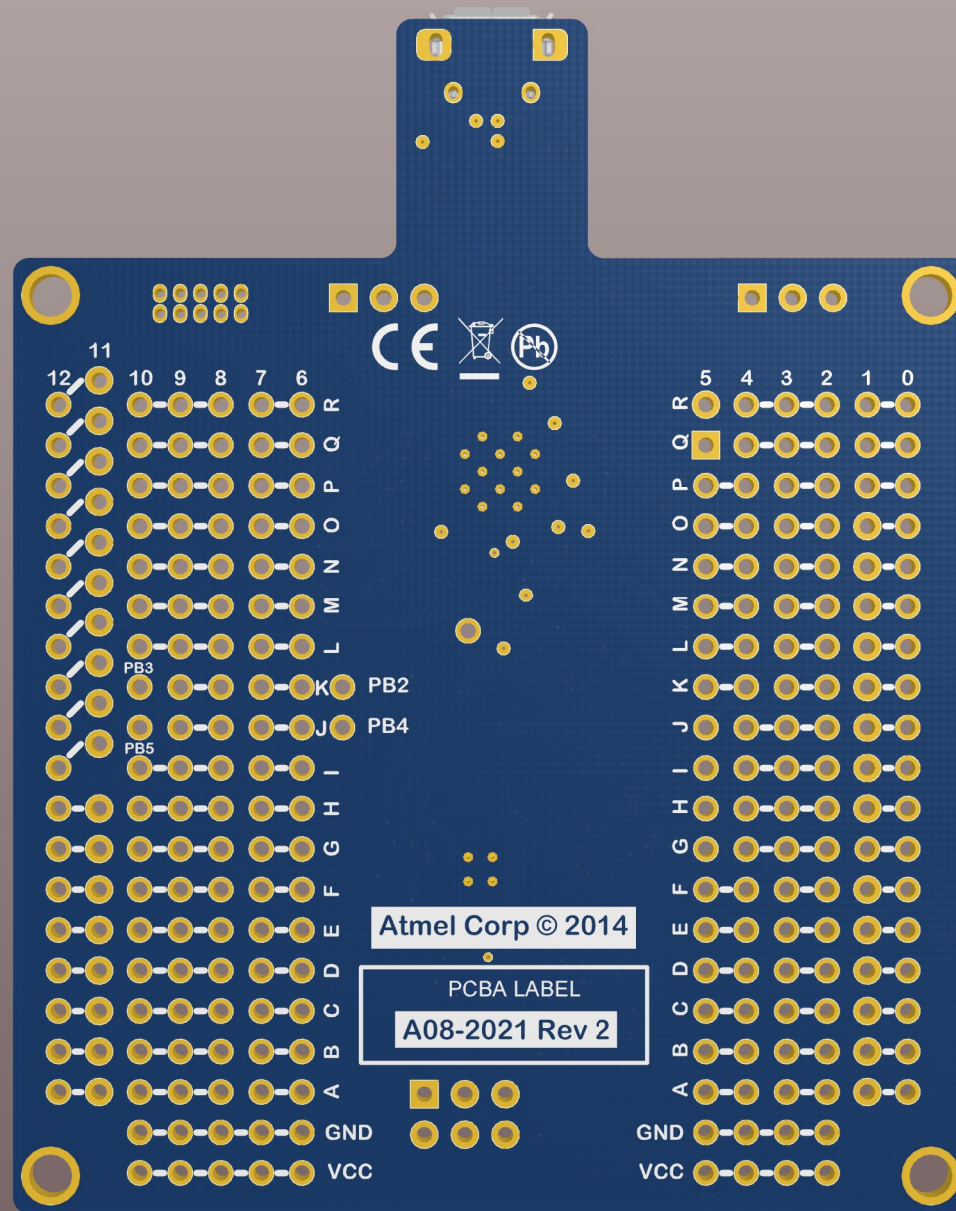




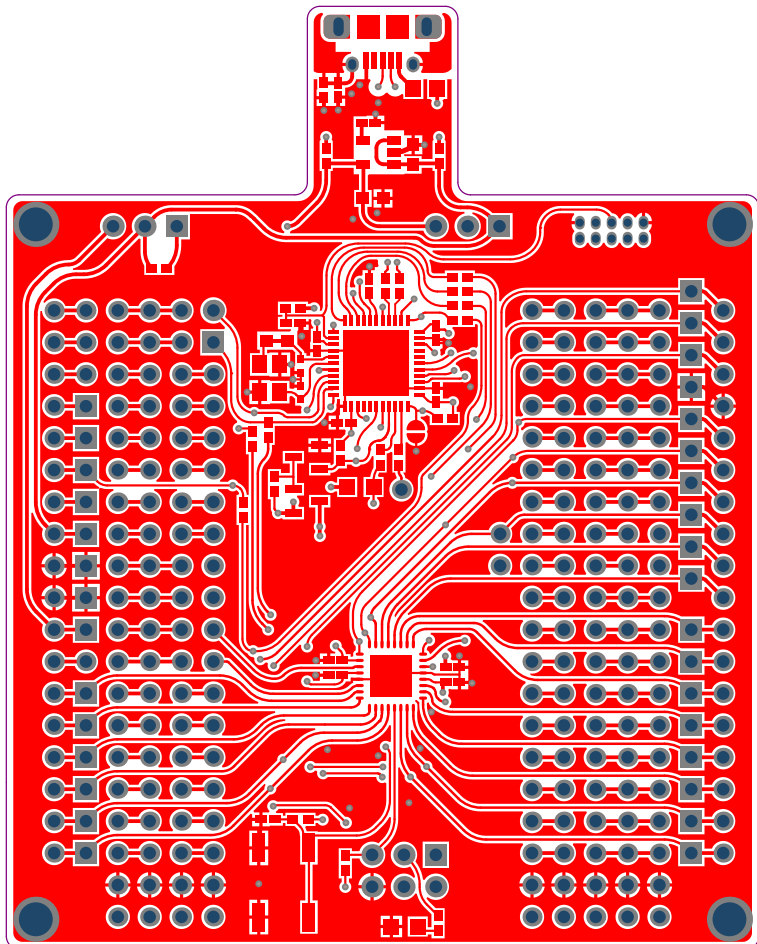


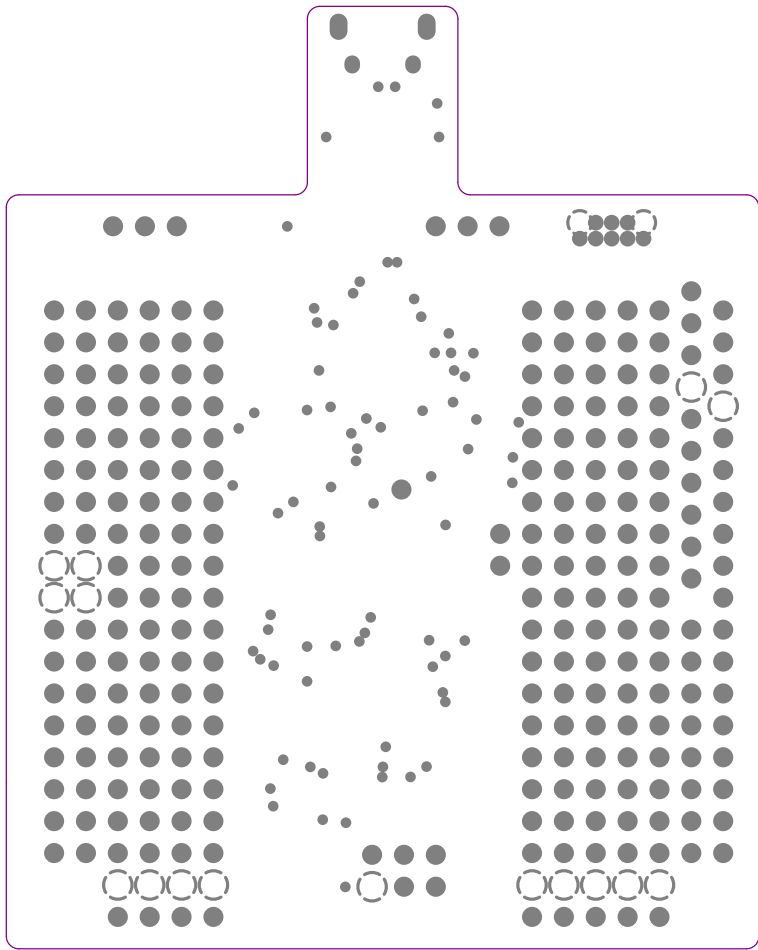
LABEL1

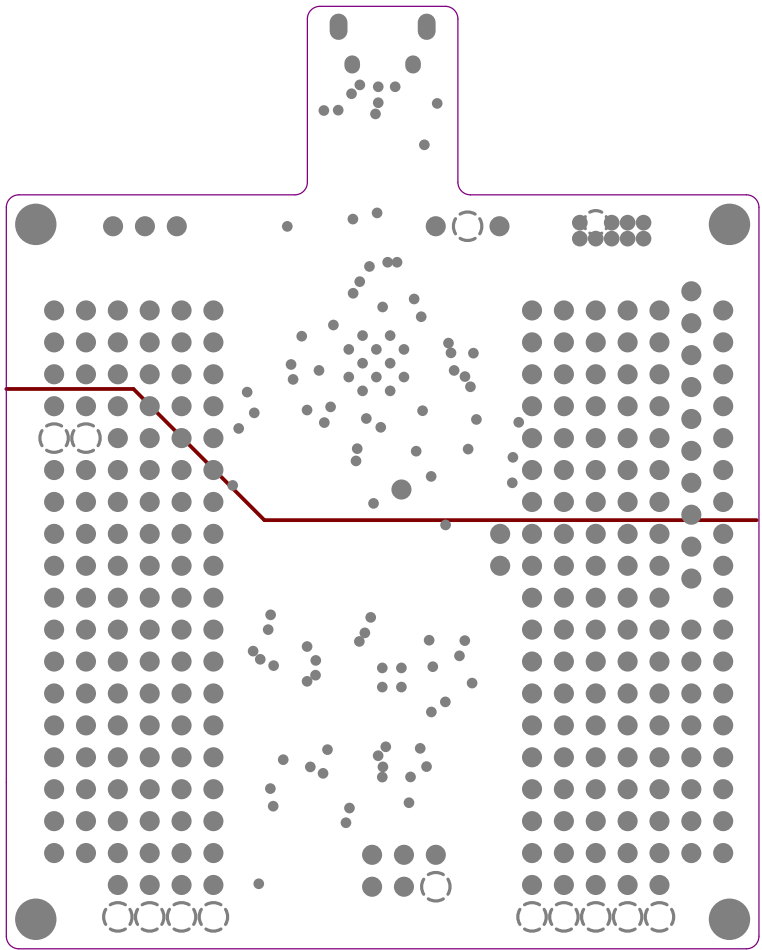


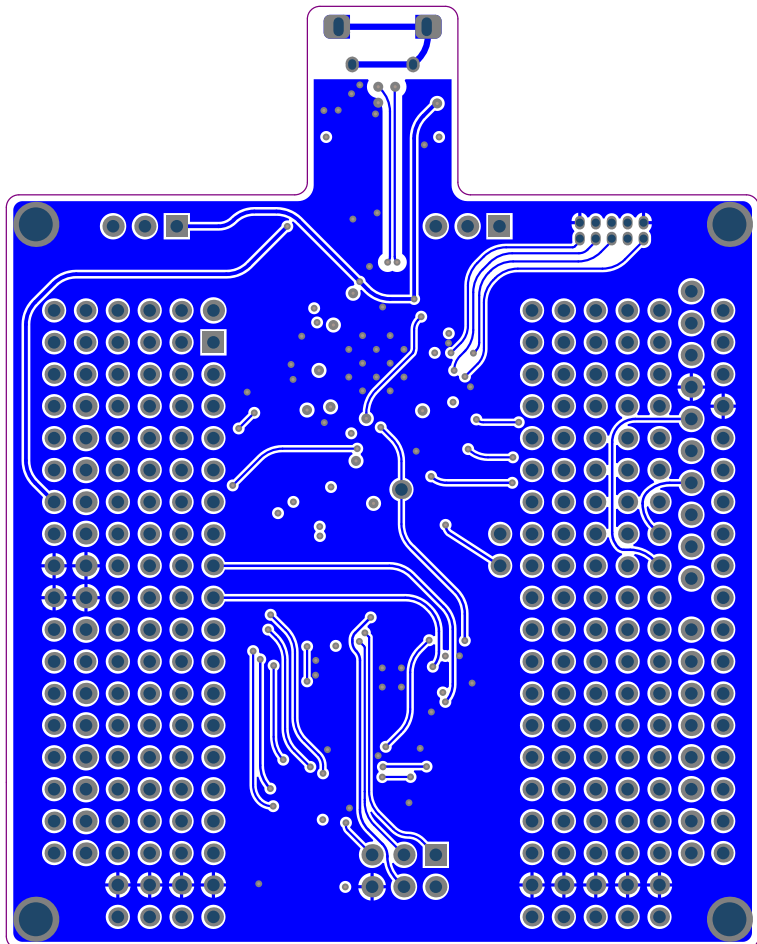












## Component list

Bill of Materials Fitted For Variant [Default\_assembly] of Project [ATmega168PB\_Xplained\_Mini.PrjPCB] (No PCB Document Selected)

Source Data From: ATmega168PB\_Xplained\_Mini.PrjPCB

Project: ATmega168PB\_Xplained\_Mini.PrjPCB

Variant: Default\_assembly



Report Date: 06.01.2017 13:41:38  
Print Date: 06.01.2017 13:40:41

Fitted	Designator	Quantity	Value	Manufacturer	MPN	Description
Fitted	C101, C102, C104, C107, C108, C200, C201, C202, C203, C204	10	100n	Kemet	C0402C104KRACTU	Ceramic capacitor, SMD 0402, X7R, 16V, +/-10%
Fitted	C103	1	1u	Kemet	C0402C105K9PAC	Ceramic capacitor, SMD 0402, X5R, 6.3V, +/-10% (de26942)
Fitted	C105, C106	2	12pF	Kyocera-elco	CM05CG120J50AH	Ceramic capacitor, SMD 0402, NP0, 50V, +/-5% (de19819)
Fitted	C300, C302	2	4.7uF	AVX	06032D475KAT2A	Ceramic capacitor, SMD 0603, X5R, 10V, +/-10%
Fitted	C301	1	10n	YAGEO CORP	CC0402KRX7R8B8T03	Ceramic capacitor, SMD 0402, X7R, 25V, +/-10%
Fitted	D100	1	EL17-21SYGC	Everlight	EL17-21SYGC	LED, Green, Wave length=575nm, SMD 0805, +/-70°
Fitted	D200	1	EL17-21UYCA3	Everlight	17-21UYCS530-A3/1R8	LED, Yellow, Wave length=591nm, SMD 0805, +/-70°
Fitted	F100	1	MC36213	Multicomp	MC36213	Resetable PTC Fuse, I <sub>n</sub> = 0.5A, I <sub>t</sub> = 1.0A, 0805 package
Fitted	FW1	1	MEDBG firmware			MEDBG firmware
Fitted	J101	1	ZX62D-B-5PA8	HIROSE	ZX62D-B-5PA8(30)	Micro USB B Connector, Standard SMT + DIP
Fitted	LABEL1	1	Label PCB A	ACT Logmark AS	505462	PCBA identification label PP Top White Gloss
Fitted	PCB1	1	ATmega168-XMINI PCB			ATmega168-XMINI PCB documentation
Fitted	PCBADO C1	1	A09-2222 PCB A Files			mega168 Xplained Mini PCB A documentation
Fitted	Q101	1	IRLML6402	International Rectifier	IRLML6402PBF	P-ch. MOSFET, -30V, -3.7A continuous, RDS(ON)=0.05Ohm@VGS=4.5V, RDS(ON)=0.08Ohm@VGS=2.5V
Fitted	Q102	1	2N7002.215	NXP	2N7002.215	N-Channel MOSFET, 60V, 0.300A continuous, 1.2A Peak, RDS(ON) = 3.8Ohm@VGS=4.5V, VGS(th)<2.5V
Fitted	R101, R102	2	22R	Samsung	RC100SF22R0CS	Thick film resistor, SMD 0402, 1/16W, 1% (de23607)
Fitted	R103	1	3.3k	ASJ	CR10-3301-FK	Thick film resistor, SMD 0402, 1/16W, 1%
Fitted	R104, R105, R117, R118, R209	5	100k	ASJ	CR10-1003-FK	Thick film resistor, SMD 0402, 1/16W, 1%
Fitted	R107, R108, R200	3	1k	ASJ	CR10-1001-FK	Thick film resistor, SMD 0402, 1/16W, 1%
Fitted	R109, R111, R112, R113	4	330R	ASJ	CR10-3300-FK	Thick film resistor, SMD 0402, 1/16W, 1%
Fitted	R110, R300, R301	3	0R	(n/a)	RMCF0402ZTOR00	RES 0.0 OHM 1/16W 0402 SMD
Fitted	R114	1	680R	ASJ	CR10-6800-FK	Thick film resistor, SMD 0402, 1/16W, 1%
Fitted	SW200	1	SKRAAKE010	ALPS	SKRAAKE010	6.2x6.2 mm SMD tact sw 1ch, same as A08-0091 but less force is needed
Fitted	TEST2	1	Test SW for A09-2222			Test SW for A09-2222, ATmega168 Xplained Mini
Fitted	TESTDOC1	1	Xplained Mini Test Instructions			Fixture Test Instructions for ATmega168-XMINI
Fitted	U100	1	ATmega32U4-MUR	ATMEL	ATmega32U4-MUR	ATmega32U4 QFN package
Fitted	U200	1	ATmega168PB-MUR	ATMEL	ATmega168PB-MUR	16k AVR with ADC/TWIRIS-232 - QFN T&R
Fitted	U300	1	LP2985-33DBV	Texas Instruments	LP2985-33DBV	LDO 3.3V 150mA SOT23-5 1.5% (cer. cap)
Fitted	XC100	1	16.0MHz	Epson Toyocom	TSX-3225 16.0000MF092-AC3	16MHz uXtal, 3.2 x 2.5 mm SMD, CL=9pF, 15PPM, ESR=60ohm(Max)
Not Fitted	C110	0	4.7n	PHYCOMP	2238 587 15632	Ceramic capacitor, SMD 0402, X7R, 25V, +/-10% (de35287)
Not Fitted	J100	0	PIN HEADER 2x5	Garry	176-2-010-0-T-XSO-0730	2x5 pin header, 1.27mm pitch, THM
Not Fitted	J104	0	HMTSW-102-23-F-S-237	SAMTEC	HMTSW-102-23-F-S-237	1x2 pin header, 2.54mm pitch, Pin-in-Paste THM
Not Fitted	J200	0	SSQ-110-21-F-S	SAMTEC	SSQ-110-21-F-S	1x10 receptacle pin header, low insertion force, 2.54mm pitch THM, Pin in Paste
Not Fitted	J201, J202	0	SSQ-108-21-F-S	SAMTEC	SSQ-108-21-F-S	1x8 receptacle pin header, low insertion force, 2.54mm pitch THM, Pin in Paste
Not Fitted	J203	0	SSQ-106-21-F-S	SAMTEC	SSQ-106-21-F-S	1x6 receptacle pin header, low insertion force, 2.54mm pitch THM
Not Fitted	J204	0	MTSW-103-08-L-D-276	SAMTEC	MTSW-103-08-L-D-276	2x3 pin header, 2.54 mm pitch, THM
Not Fitted	J300, J301	0	HMTSW-103-23-F-S-237	SAMTEC	HMTSW-103-23-F-S-237	1x3 pin header, 2.54mm pitch, Pin-in-Paste THM, 1mm hole
Not Fitted	R115	0	1M	ASJ	CR10-1004-FK	Thick film resistor, SMD 0402, 1/16W, 1%
Not Fitted	R212, R302	0	0R	(n/a)	RMCF0402ZTOR00	RES 0.0 OHM 1/16W 0402 SMD

Approved	52

Notes