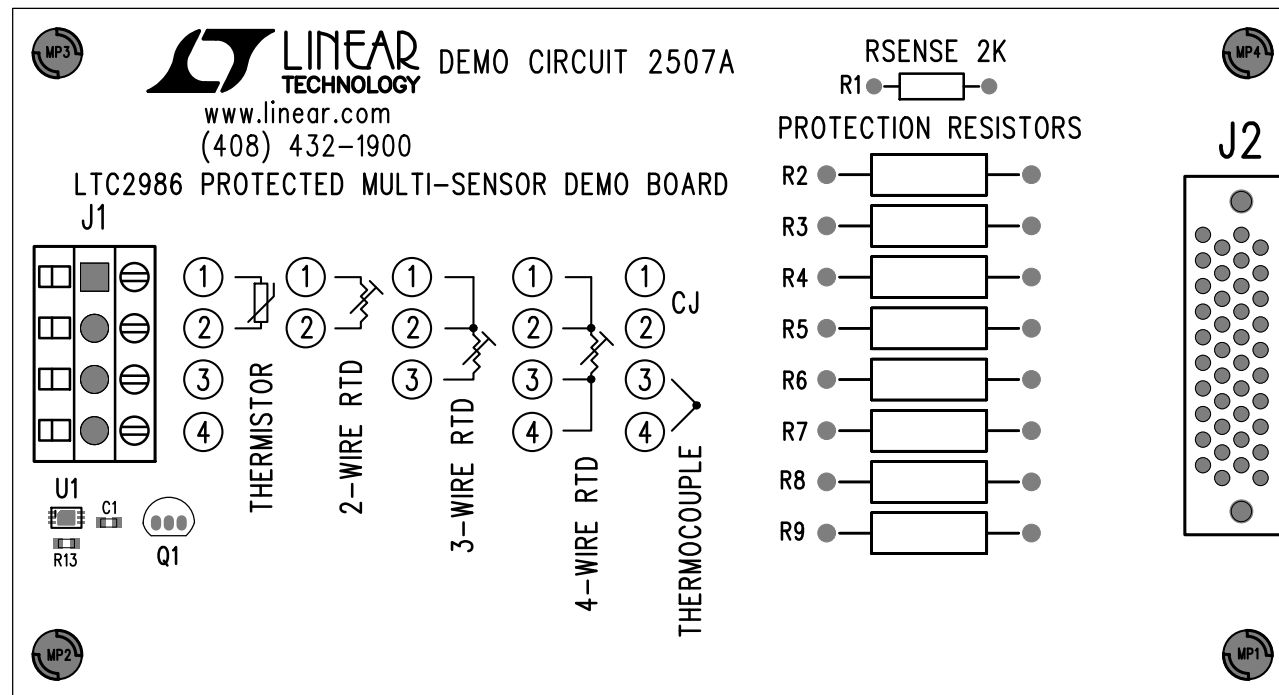
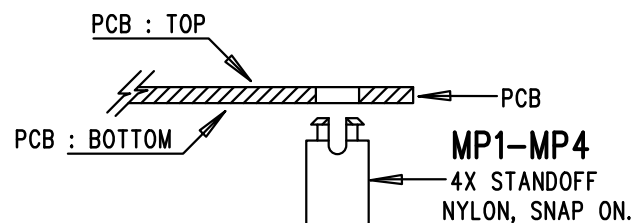


REVISION HISTORY				
ECO	REV	DESCRIPTION	APP. ENG.	DATE



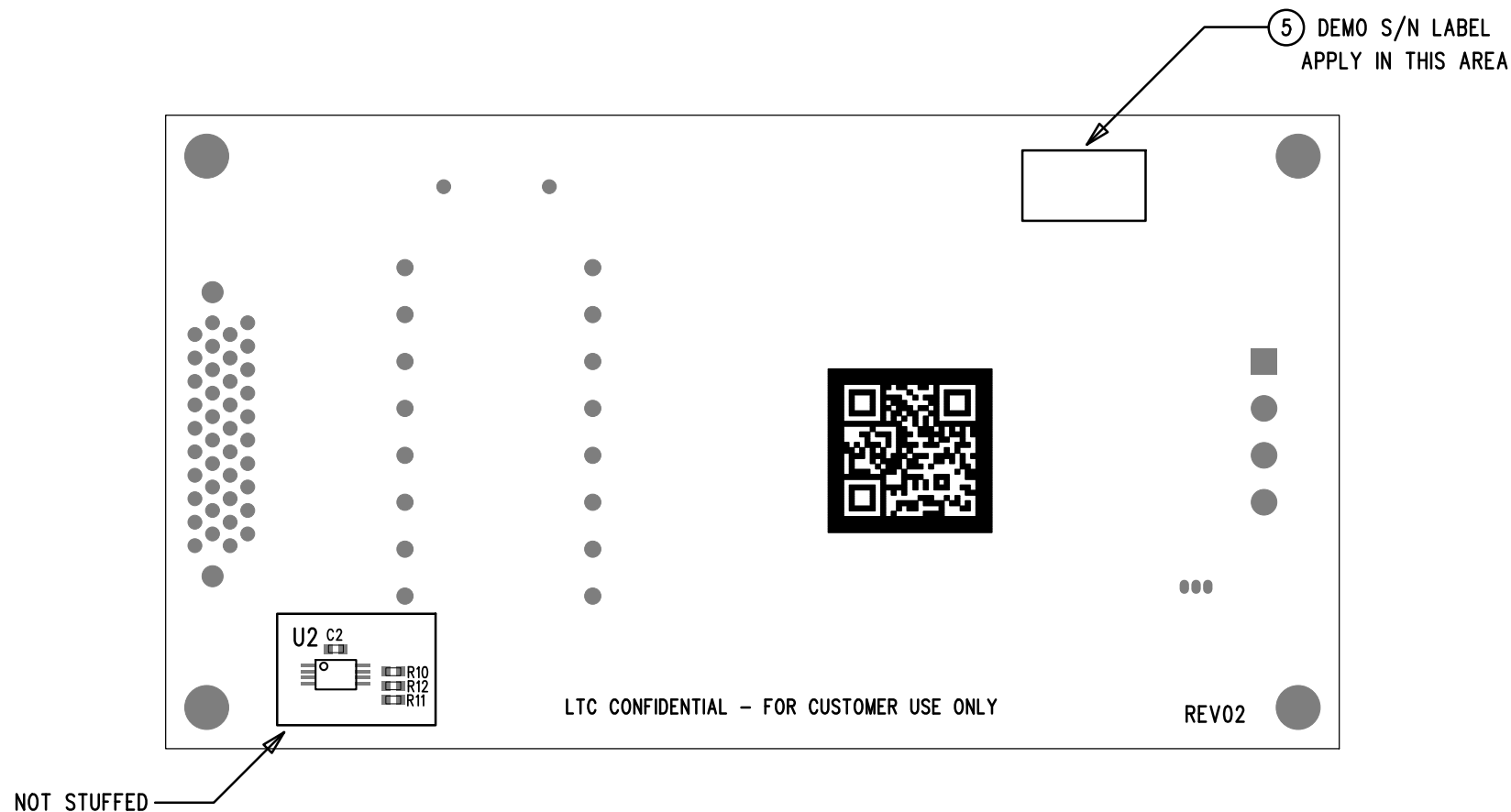
NOTES: UNLESS OTHERWISE SPECIFIED


1. WORKMANSHIP SHALL BE IN ACCORDANCE WITH IPC-A-610.
2. ASSEMBLY PROCESS SHALL INCLUDE: REFLOW SOLDER TOP SIDE SMD. MAXIMUM SOLDER TEMPERATURE IS 240 DEGREES CELSIUS.
3. DEPANELIZE BOARDS AFTER ASSEMBLY AND ROUTE-OUT THE BREAKOUT TABS ON FOUR SIDES OF THE BOARD EDGE.
4. INSTALL 4 STANDOFFS AS SHOWN BELOW:
5. APPLY DEMO S/N AT AREA ON BOTTOM SIDE AS SHOWN ON SHEET 2.
6. INSTALL J1 AND J2 ON TOP SIDE AS SHOWN.



APPROVALS			
PCB DES.	M.HAWKINS		
APP ENG.	M. MAYES	TITLE: TOP ASSEMBLY DRAWING	
		LTC2986 PROTECTED	
		MULTI-SENSOR DEMO BOARD	
		SIZE	DWG REV.
		N/A	03
SCALE = NONE		DEMO CIRCUIT 2507A	
		SHT 1 OF 2	

1630 MCCARTHY BLVD
MILPITAS, CA 95035
PH: (408)432-1900
www.linear.com
LTC CONFIDENTIAL-
FOR CUSTOMER USE ONLY



APPROVALS		 LINEAR TECHNOLOGY 1630 MCCARTHY BLVD MILPITAS, CA 95035 PH: (408)432-1900 www.linear.com LTC CONFIDENTIAL - FOR CUSTOMER USE ONLY	
PCB DES.	M.HAWKINS		
APP ENG.	M. MAYES	TITLE: BOTTOM ASSEMBLY DRAWING LTC2986 PROTECTED MULTI-SENSOR DEMO BOARD	
SCALE = NONE		SIZE N/A	DWG REV. 03
		SHT 2 of 2	