

TPS54424EVM-779 4-A, SWIFT™ Regulator Evaluation Module

This user's guide contains information for the TPS54424EVM-779 evaluation module (PWR779) as well as for the TPS54424 dc/dc converter. Also included are the performance specifications, the schematic, and the bill of materials for the TPS54424EVM-779.

Contents

1	Introduction	2
	1.1 Background	2
	1.2 Performance Specification Summary	2
	1.3 Modifications.....	3
2	Test Setup and Results	4
	2.1 Input/Output Connections.....	4
	2.2 Efficiency.....	5
	2.3 Output Voltage Regulation.....	6
	2.4 Load Transient and Loop Response	6
	2.5 Output Voltage Ripple	7
	2.6 Input Voltage Ripple	7
	2.7 Powering Up	8
	2.8 Powering Down	8
	2.9 Start-Up Into Pre-Bias	9
	2.10 Hiccup Mode Current Limit	9
3	Board Layout.....	11
	3.1 Layout.....	11
4	Schematic and Bill of Materials.....	13
	4.1 Schematic	13
	4.2 Bill of Materials	14

List of Figures

1	TPS54424EVM-779 Efficiency	5
2	TPS54424EVM-779 Low Current Efficiency	5
3	TPS54424EVM-779 Efficiency	5
4	TPS54424EVM-779 Load Regulation.....	6
5	TPS54424EVM-779 Line Regulation.....	6
6	TPS54424EVM-779 Transient Response	6
7	TPS54424EVM-779 Loop Response	6
8	TPS54424EVM-779 Output Ripple, No Load	7
9	TPS54424EVM-779 Output Ripple, 4-A Load	7
10	TPS54424EVM-779 Input Ripple, No Load	7
11	TPS54424EVM-779 Input Ripple, 4-A Load	7
12	TPS54424EVM-779 Start-Up Relative to V_{IN}	8
13	TPS54424EVM-779 Start-Up Relative to Enable.....	8
14	TPS54424EVM-779 Shutdown Relative to V_{IN}	8
15	TPS54424EVM-779 Shutdown Relative to Enable.....	8
16	TPS54424EVM-779 Start-Up Into Pre-Bias	9

17	TPS54424EVM-779 Hiccup Mode Current Limit	9
18	TPS54424EVM-779 Hiccup Mode Start	9
19	TPS54424EVM-779 Hiccup Mode Stop	9
20	TPS54424EVM-779 Top-Side Composite View.....	11
21	TPS54424EVM-779 Top-Side Layout	11
22	TPS54424EVM-779 Internal Layer-1 Layout	11
23	TPS54424EVM-779 Internal Layer-2 Layout	11
24	TPS54424EVM-779 Bottom-Side Layout	11
25	TPS54424EVM-779 Bottom-Side Composite View.....	11
26	TPS54424EVM-779 Schematic	13

List of Tables

1	Input Voltage and Output Current Summary	2
2	TPS54424EVM-779 Performance Specification Summary	2
3	TPS54424EVM-779 EVM Connectors and Test Points	4
4	TPS54424EVM-779 Bill of Materials.....	14

Trademarks

All trademarks are the property of their respective owners.

1 Introduction

1.1 Background

The TPS54424 dc/dc converter is a synchronous buck converter designed to provide up to an 4-A output. The input (V_{IN}) is rated for 4.5 V to 17 V. Rated input voltage and output current range for the evaluation module are given in [Table 1](#). This evaluation module is designed to demonstrate the small printed-circuit-board areas that may be achieved when designing with the TPS54424 regulator. The RT/CLK pin is configured for 700-kHz switching frequency. The high-side and low-side MOSFETs are incorporated inside the TPS54424 package along with the gate-drive circuitry. The low drain-to-source on-resistance of the MOSFET allows the TPS54424 to achieve high efficiencies and helps keep the junction temperature low at high output currents. An external divider allows for an adjustable output voltage. Additionally, the TPS54424 provides adjustable soft start and undervoltage lockout inputs and a power good output.

Table 1. Input Voltage and Output Current Summary

EVM	Input Voltage Range	Output Current Range
TPS54424EVM-779	$V_{IN} = 4.5 \text{ V to } 17 \text{ V}$	0 A to 4 A

1.2 Performance Specification Summary

A summary of the TPS54424EVM-779 performance specifications is provided in [Table 2](#). Specifications are given for an input voltage of $V_{IN} = 12 \text{ V}$ and an output voltage of 1.8 V, unless otherwise specified. The TPS54424EVM-779 is designed and tested for $V_{IN} = 4.5 \text{ V to } 17 \text{ V}$. The ambient temperature is 25°C for all measurements, unless otherwise noted.

Table 2. TPS54424EVM-779 Performance Specification Summary

Specification	Test Conditions	MIN	TYP	MAX	Unit
V_{IN} voltage range		4.5	12	17	V
V_{IN} start voltage			4.5		V
V_{IN} stop voltage			4		V
Output voltage setpoint			1.8		V
Output current range	$V_{IN} = 4.5 \text{ V to } 17 \text{ V}$	0		4	A
Load regulation	$V_{IN} = 4.5 \text{ V to } 17 \text{ V}, I_O = 4 \text{ A}$		-0.05%		

Table 2. TPS54424EVM-779 Performance Specification Summary (continued)

Specification	Test Conditions	MIN	TYP	MAX	Unit
Load transient response	I _O = 1 A to 3 A		-70		mV
	I _O = 3 A to 1 A		70		mV
Loop bandwidth	V _{IN} = 12 V, I _O = 4 A		80		kHz
Phase margin	V _{IN} = 12 V, I _O = 4 A		50		degree
Input ripple voltage	I _O = 4 A		200		mVPP
Output ripple voltage	I _O = 4 A		10		mVPP
Output rise time			1.1		ms
Operating frequency			700		kHz
Peak efficiency	TPS54424EVM-779, V _{IN} = 5 V, I _O = 1.6 A to 1.8 A		94.0%		
	TPS54424EVM-779, V _{IN} = 12 V, I _O = 3 A		89.4%		

1.3 Modifications

These evaluation modules are designed to provide access to the features of the TPS54424. Some modifications can be made to this module.

1.3.1 Output Voltage Setpoint

The output voltage is set by the resistor divider network of R8 and R6. R6 is fixed at 6.04 kΩ. To change the output voltage of the EVM, it is necessary to change the value of resistor R8. Changing the value of R6 can change the output voltage above the 0.6-V reference voltage V_{REF}. The value of R8 for a specific output voltage can be calculated using [Equation 1](#).

$$R8 = R6 \times \left(\frac{V_{OUT}}{0.6V} - 1 \right) \quad (1)$$

1.3.2 Adjustable UVLO

The undervoltage lockout (UVLO) can be adjusted externally using R2 and R9. See the TPS54424 datasheet ([SLVSDV8](#)) for detailed instructions for setting the external UVLO.

2 Test Setup and Results

This section describes how to properly connect, set up, and use the TPS54424EVM-779 evaluation module. The section also includes test results typical for the evaluation module and covers efficiency, output voltage regulation, load transients, loop response, output ripple, input ripple, start-up, and current limit modes.

2.1 Input/Output Connections

The TPS54424EVM-779 is provided with input/output connectors and test points as shown in [Table 3](#). To support the full current capability of an unmodified TPS54424EVM-779, a power supply capable of supplying greater than 2 A must be connected to J1 through a pair of 20-AWG wires or better. The load must be connected to J2 through a pair of 20-AWG wires or better. The maximum load current capability before hitting current limit is typically 6 A to 7 A. Wire lengths must be minimized to reduce losses in the wires. Test point TP1 provides a place to monitor the V_{IN} input voltages with TP7 providing a convenient ground reference. TP4 is used to monitor the output voltage with TP9 as the ground reference.

Table 3. TPS54424EVM-779 EVM Connectors and Test Points

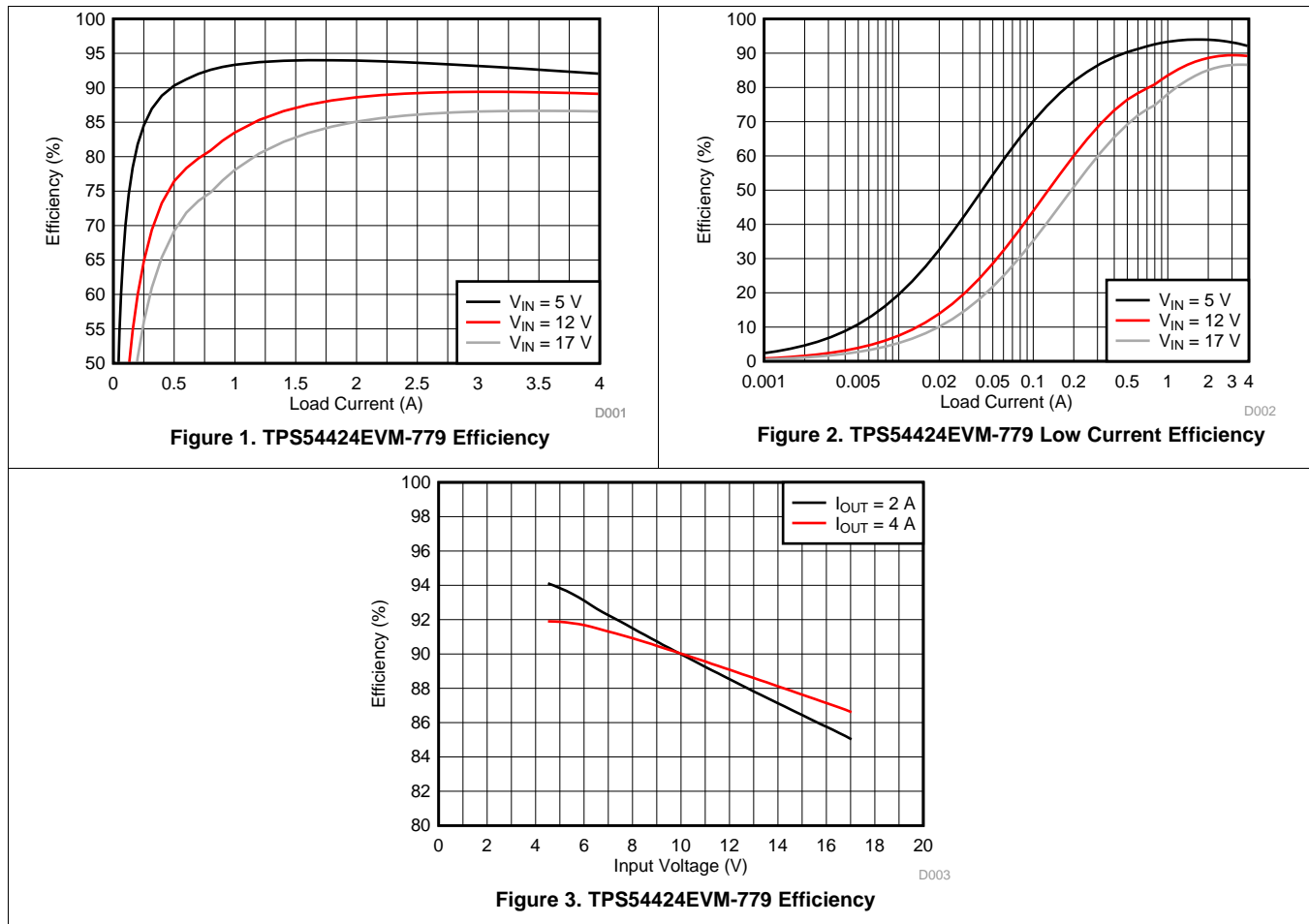
Reference Designator	Function
J1	VIN input voltage connector (see Table 1 for V_{IN} range)
J2	VOOUT terminal to connect load
J3	2-pin header for enable. Add shunt to connect EN to ground and disable device.
J4	2-pin header for power good resistor pullup connection. Add a shunt to pull up to VOOUT only if VOOUT < 6.0 V. If VOOUT > 6.0 V keep open and use external supply with TP5 to pullup PGOOD.
TP1	VIN test point
TP2	EN test point
TP3	SW node test point
TP4	1.8-V test point
TP5	PGOOD pullup test point
TP6	PGOOD test point
TP7	PGND test point
TP8	SS/TRK test point
TP9	PGND test point
TP10	Test point between voltage divider network and output of TPS54424 converter. Used for loop response measurements.
TP11	PGND test point
TP12	AGND test point
TP13	AGND test point
TP14	PGND test point
TP15	Test point for supplying external CLK for synchronization. C20 and R10 should be populated to use.

2.2 Efficiency

Figure 1 shows the efficiency for the TPS54424EVM-779 at an ambient temperature of 25°C. The efficiency of this EVM peaks at a load current of about 2 A and then decreases as the load current increases toward full load.

Figure 2 shows the efficiency for the TPS54424EVM-779 using a semi-log scale to more easily show efficiency at lower output currents. The TPS54424 operates in continuous conduction mode at light loads in order to keep a fixed frequency and this results in lower efficiency at lower output currents.

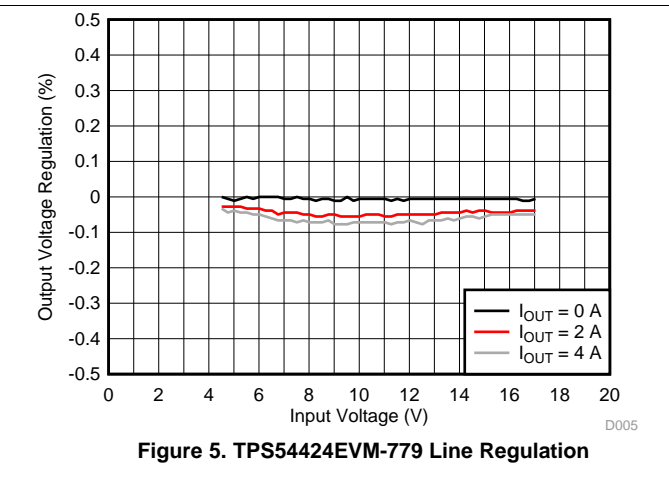
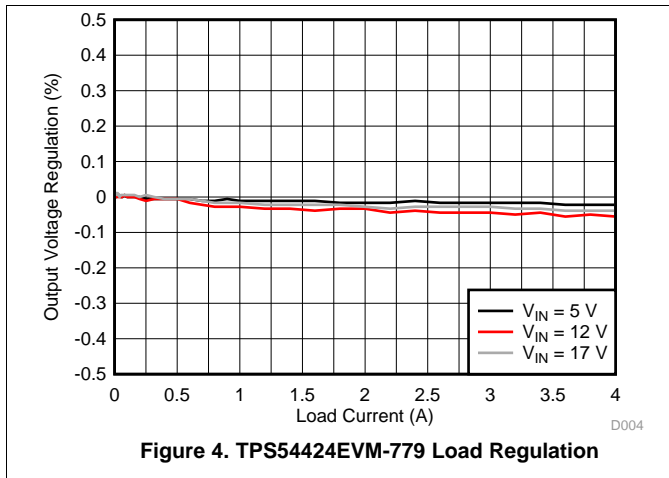
Figure 3 shows the efficiency for the TPS54424EVM-779 versus input voltage with a fixed load.



The efficiency may be lower at higher ambient temperatures, due to temperature variation in the drain-to-source resistance of the internal MOSFETs.

2.3 Output Voltage Regulation

Figure 4 shows the load regulation for the TPS54424EVM-779. Figure 5 shows the line regulation for the TPS54424EVM-779.

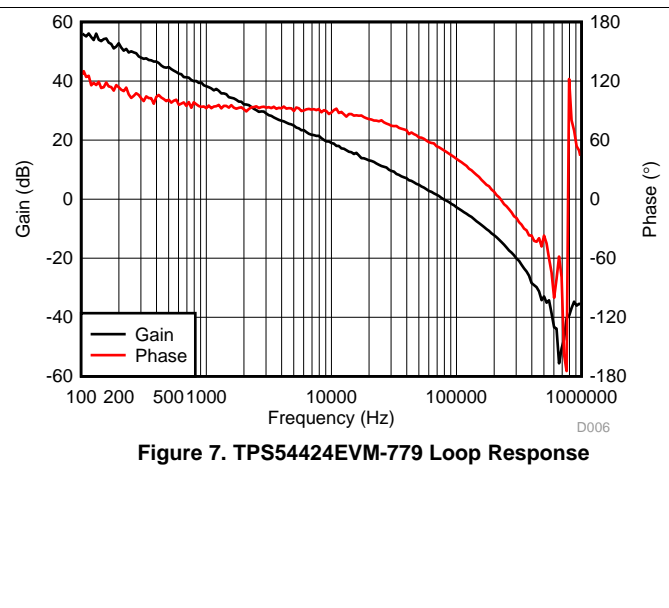
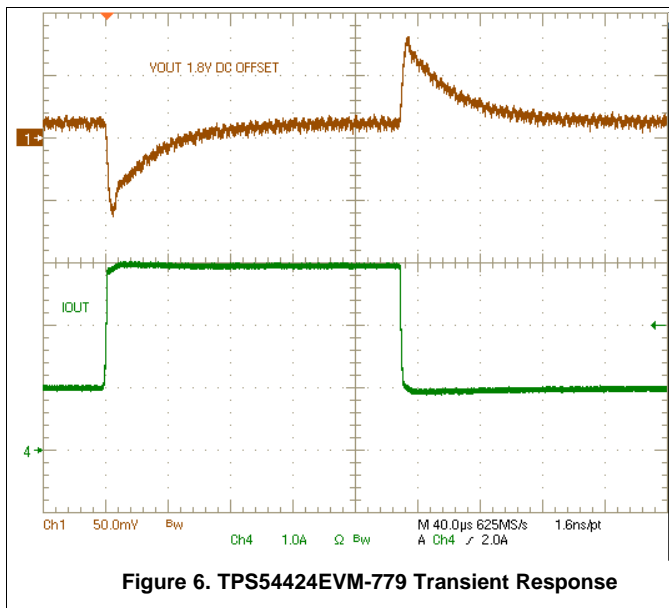


Measurements are given for an ambient temperature of 25°C.

2.4 Load Transient and Loop Response

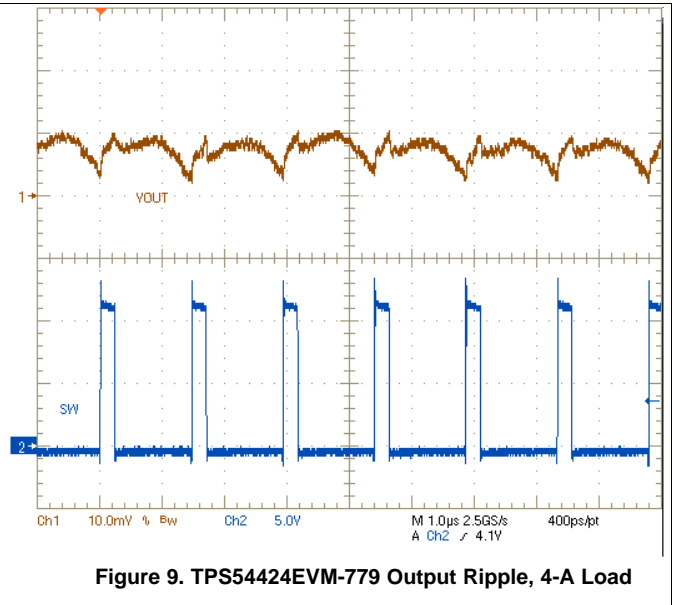
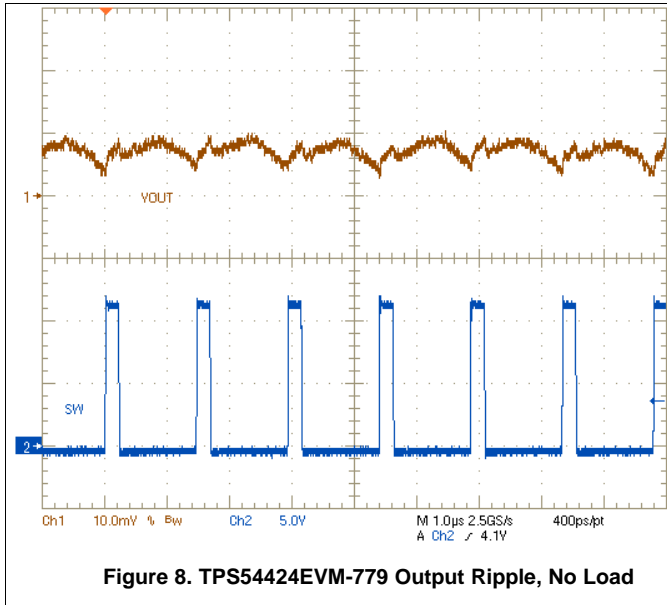
Figure 6 shows the TPS54424EVM-779 response to load transients. The current step is from 1 A to 3 A. The current step slew rate is 1 A/μs. Total peak-to-peak voltage variation is as shown, including ripple and noise on the output.

Figure 7 shows the TPS54424EVM-779 loop-response characteristics. Gain and phase plots are shown for V_{IN} voltage of 12 V. Load current for the measurement is 2 A.



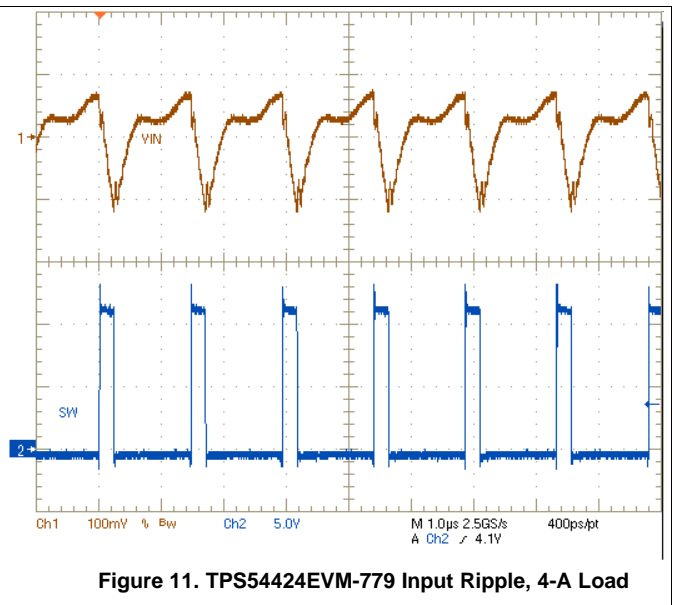
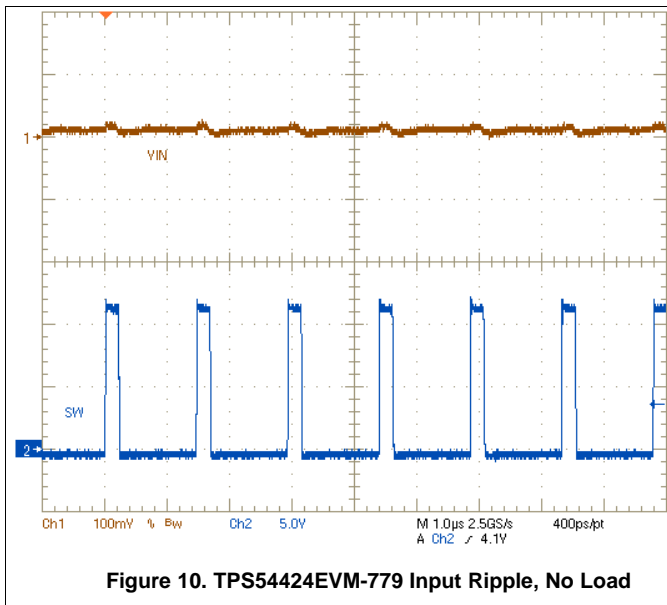
2.5 Output Voltage Ripple

Figure 8 and Figure 9 show the TPS54424EVM-779 output voltage ripple. The load currents are no load and 4 A. $V_{IN} = 12$ V. The ripple voltage is measured directly across TP9 and TP4.



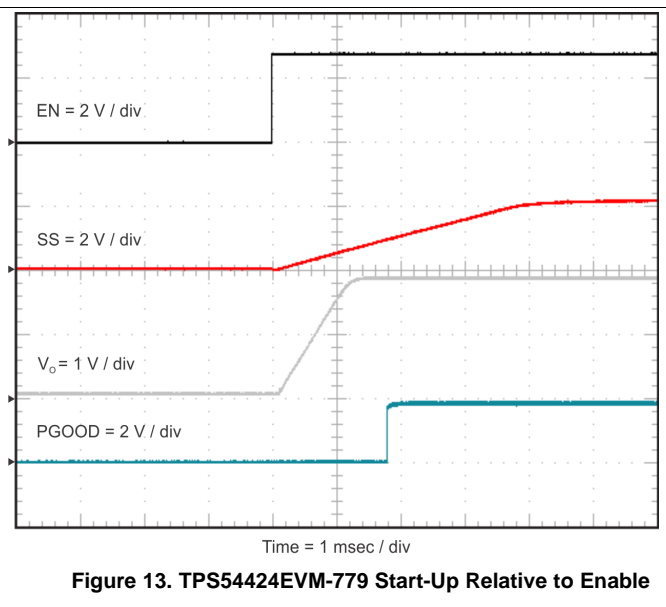
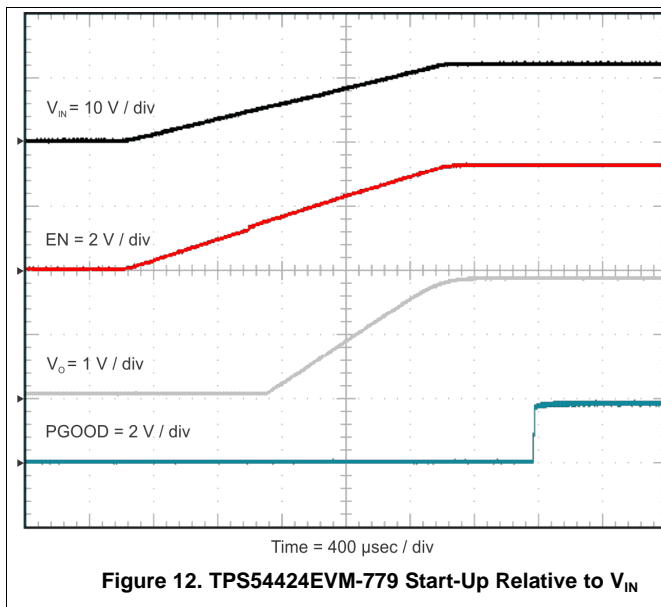
2.6 Input Voltage Ripple

Figure 10 and Figure 11 show the TPS54424EVM-779 input voltage ripple. The load currents are no load and 4 A. $V_{IN} = 12$ V. The ripple voltage is measured directly across TP1 and TP7.



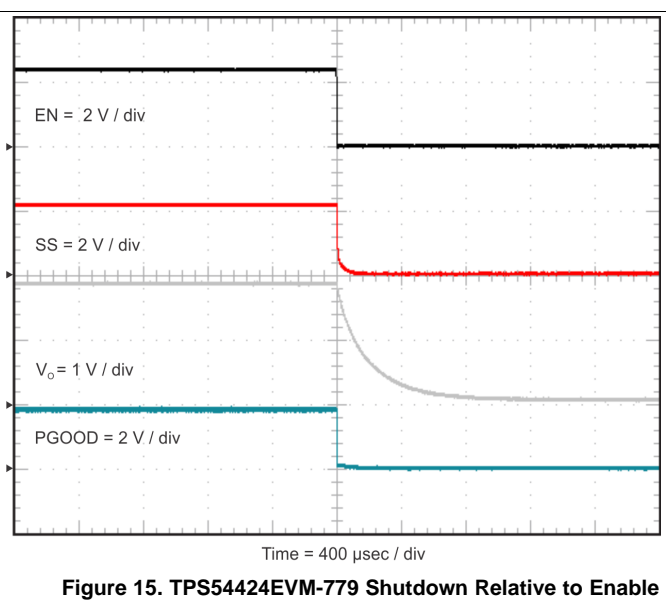
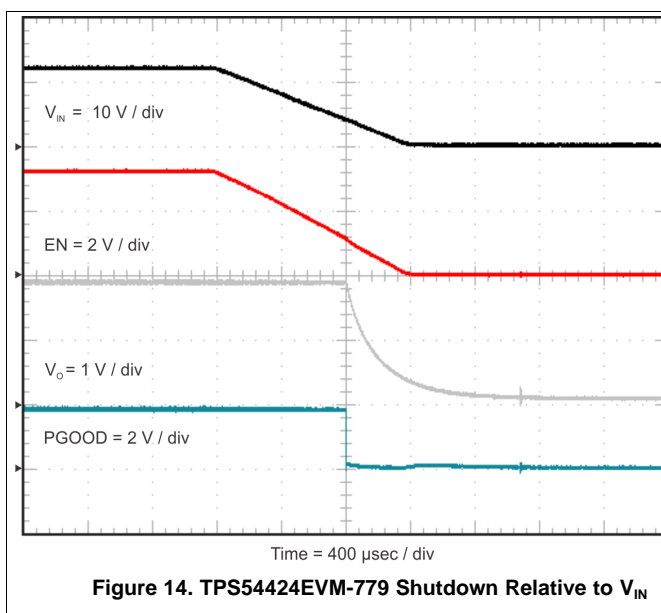
2.7 Powering Up

Figure 12 and Figure 13 show the start-up waveforms for the TPS54424EVM-779. In Figure 12, the output voltage ramps up as soon as the input voltage reaches the UVLO threshold. In Figure 13, the input voltage is initially applied and the output is inhibited by pulling EN to GND using an external function generator. When the EN voltage is increased above the enable-threshold voltage, the start-up sequence begins and the output voltage ramps up to the externally set value of 1.8 V. The input voltage for these plots is 12 V and the load is 1 Ω . Alternatively, a jumper at J3 to tie EN to GND can also be used. When the jumper is removed, EN is released and the start-up sequence will begin.



2.8 Powering Down

Figure 14 and Figure 15 show the TPS54424EVM-779 shutdown. The input voltage for these plots is 12 V and the load is 1 Ω .



2.9 Start-Up Into Pre-Bias

Figure 16 shows the TPS54424EVM-779 start up into a pre-biased output. The output voltage is pre-biased to 1 V.

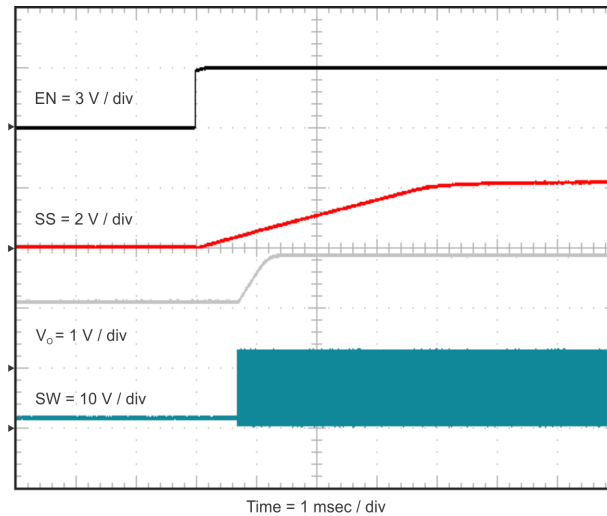


Figure 16. TPS54424EVM-779 Start-Up Into Pre-Bias

2.10 Hiccup Mode Current Limit

Figure 17, Figure 18, and Figure 19 show the TPS54424EVM-779 hiccup mode current limit feature. When an overcurrent event occurs, the TPS54424EVM-779 shuts down and restarts. Figure 17 shows the TPS54424EVM-779 entering hiccup mode in an overcurrent condition. Figure 18 shows TPS54424EVM-779 entering hiccup mode with a longer timescale to show the hiccup period. Figure 19 shows TPS54424EVM-779 exiting hiccup mode after the overcurrent condition is removed.

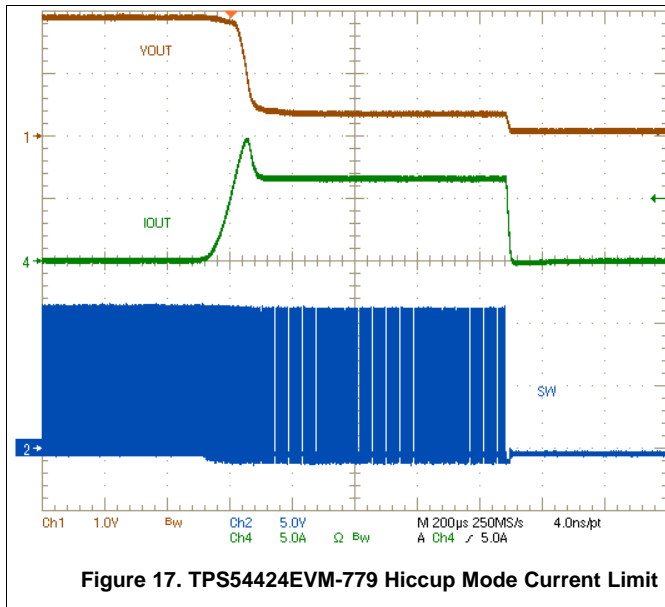


Figure 17. TPS54424EVM-779 Hiccup Mode Current Limit

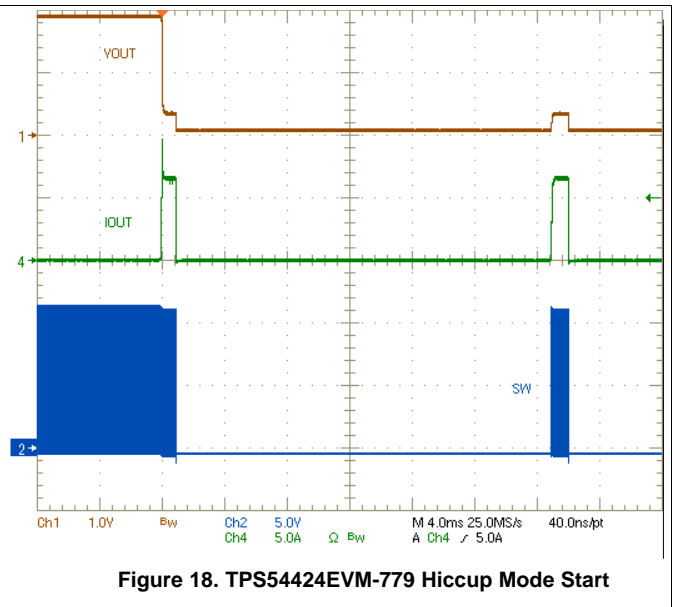


Figure 18. TPS54424EVM-779 Hiccup Mode Start

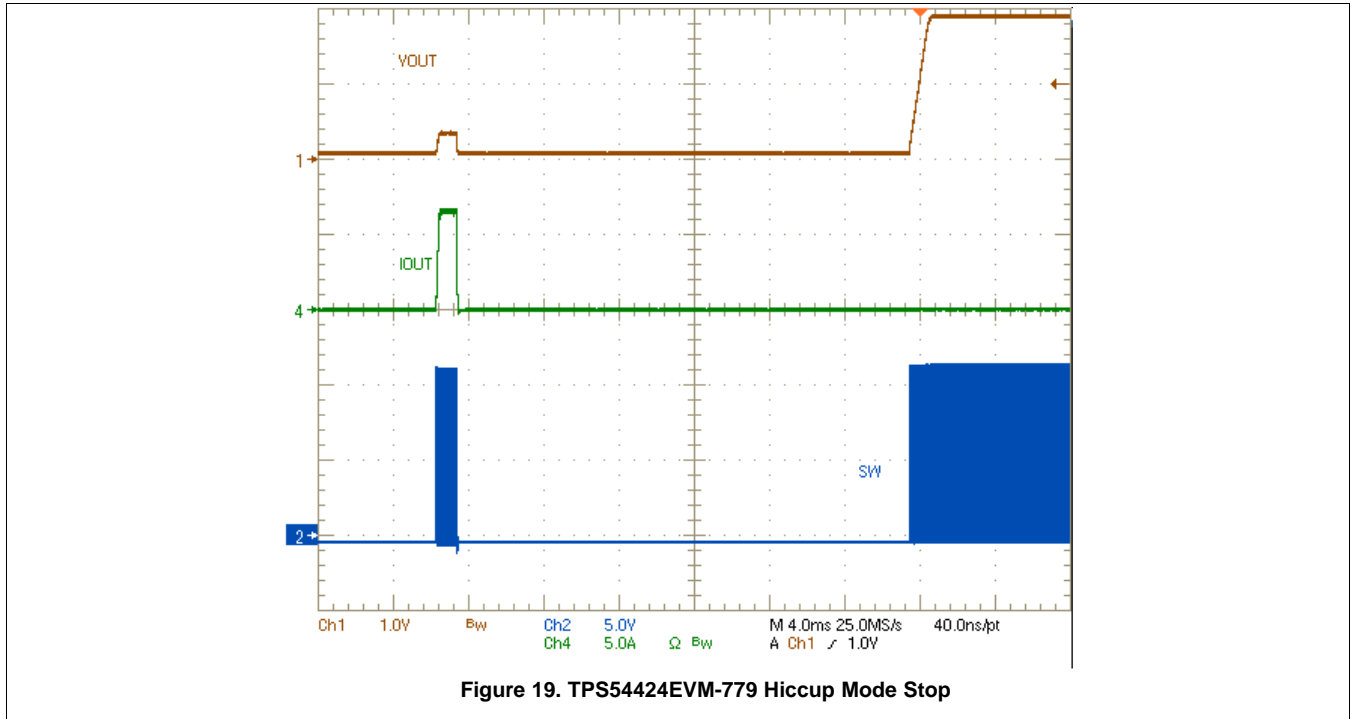


Figure 19. TPS54424EVM-779 Hiccup Mode Stop

3 Board Layout

This section provides a description of the TPS54424EVM-779 board layout and layer illustrations.

3.1 Layout

The board layout for the TPS54424EVM-779 is shown in Figure 21 through Figure 24. The top-side layer of the EVM is laid out in a manner typical of a user application. The top, bottom, and internal layers are 2-oz. copper.

The top layer contains the main power traces for VIN, VOUT, and SW. Also on the top layer are connections for the remaining pins of the TPS54424 and the majority of the signal traces. The top layer has dedicated ground plane for quiet analog ground that is connected to the main power ground plane at a single point. The internal layer-1 is a large ground plane and also routes signals to test points. The internal layer-2 contains an additional large ground copper area as well as an additional VIN and VOUT copper fill. The bottom layer is another ground plane with two additional traces for the output voltage feedback. The top-side ground traces are connected to the bottom and internal ground planes with multiple vias placed around the board.

The input decoupling capacitors and bootstrap capacitor are all located as close to the IC as possible. Additionally, the voltage set point resistor divider components are kept close to the IC. The voltage divider network ties to the output voltage at the point of regulation, the copper V_{OUT} trace at the TP4 test point. An additional input bulk capacitor is used to limit the noise entering the converter from the input supply. Critical analog circuits such as the voltage set point divider, EN resistor, SS/TRK capacitor, RT/CLK resistor, and COMP pin are terminated to the quiet analog ground island on the top layer.

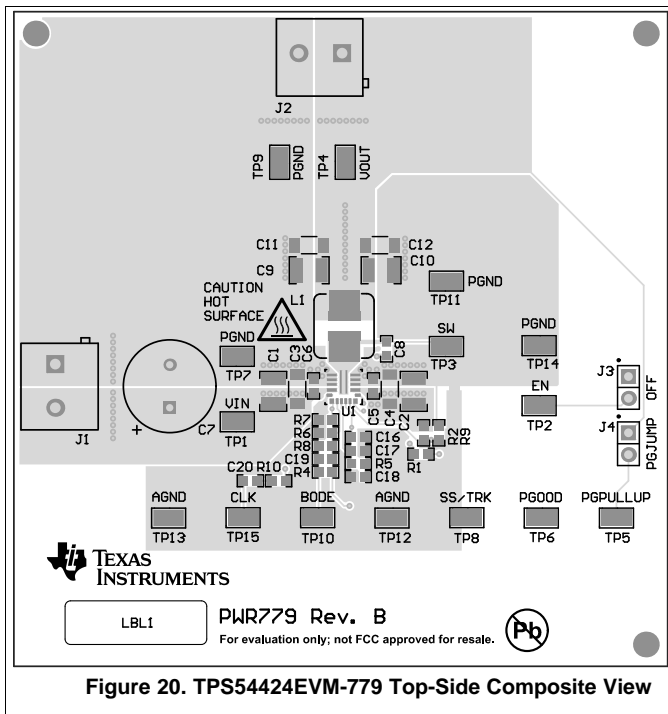


Figure 20. TPS54424EVM-779 Top-Side Composite View

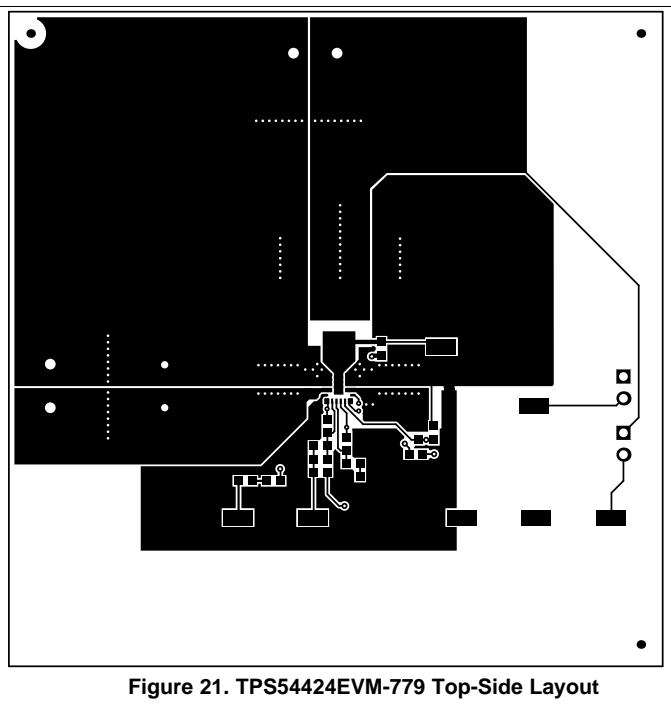


Figure 21. TPS54424EVM-779 Top-Side Layout

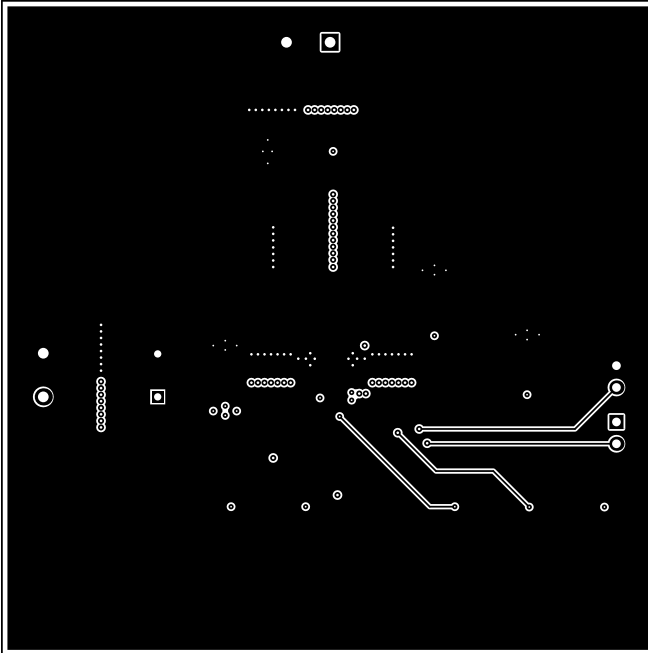


Figure 22. TPS54424EVM-779 Internal Layer-1 Layout

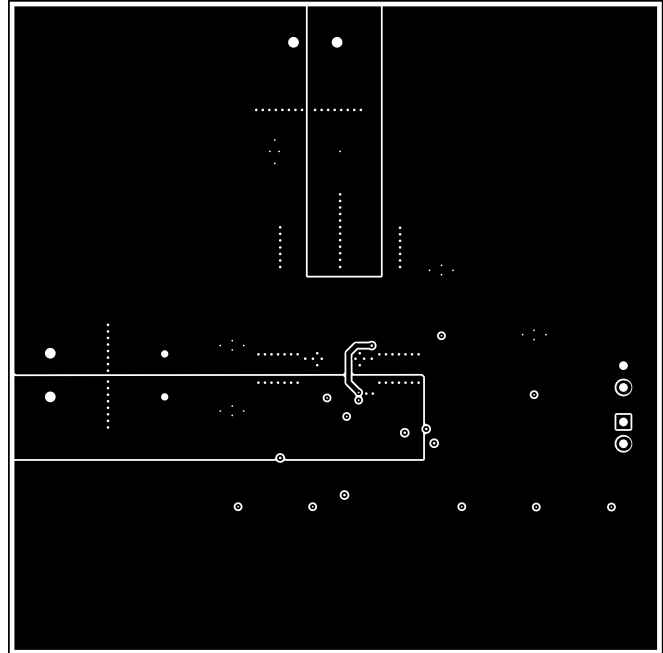


Figure 23. TPS54424EVM-779 Internal Layer-2 Layout

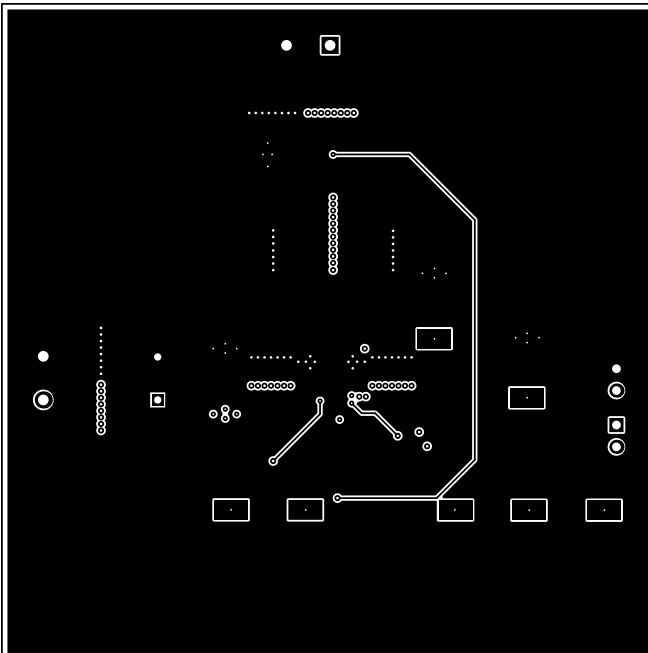


Figure 24. TPS54424EVM-779 Bottom-Side Layout

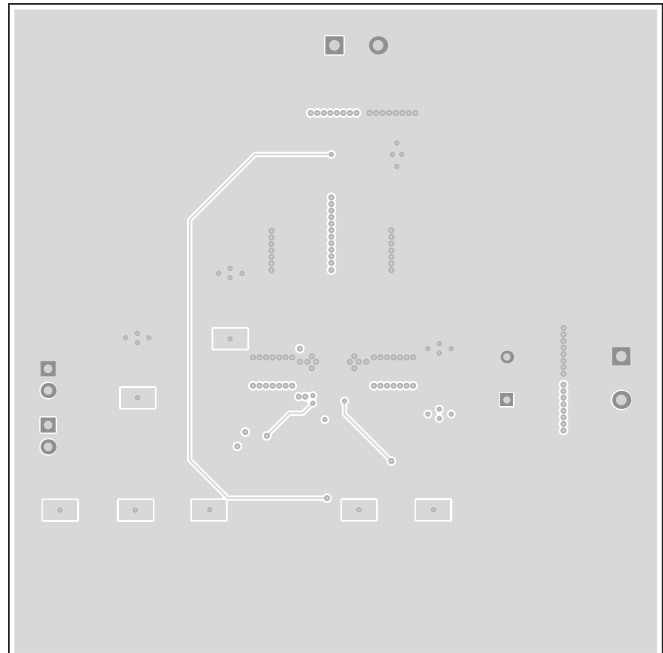


Figure 25. TPS54424EVM-779 Bottom-Side Composite View

4 Schematic and Bill of Materials

This section presents the TPS54424EVM-779 schematic and bill of materials.

4.1 Schematic

Figure 26 is the schematic for the TPS54424EVM-779.

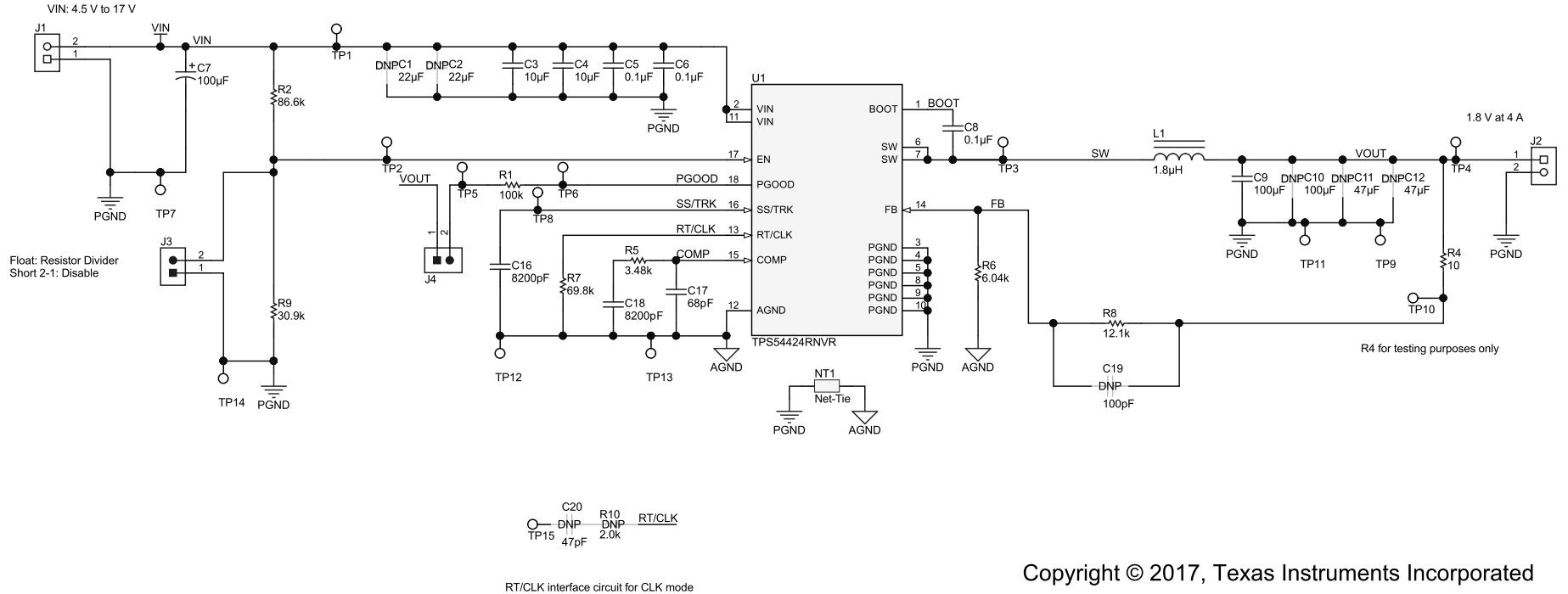


Figure 26. TPS54424EVM-779 Schematic

Copyright © 2017, Texas Instruments Incorporated

4.2 Bill of Materials

Table 4 presents the bill of materials for the TPS54424EVM-779.

Table 4. TPS54424EVM-779 Bill of Materials

Designator	Qty	Value	Description	Package Reference	Part Number	Manufacturer
C3, C4	2	10uF	CAP, CERM, 10 μ F, 25 V, +/- 10%, X5R, 1206	1206	GRM31CR61E106KA12L	Murata
C5, C6, C8	3	0.1uF	CAP, CERM, 0.1uF, 25V, +/-10%, X7R, 0603	0603	06033C104KAT2A	AVX
C7	1	100uF	CAP, AL, 100 μ F, 50 V, +/- 20%, 0.18 ohm, TH	Cap, 10x12.5mm	UBT1H101MPD1TD	Nichicon
C9	1	100uF	CAP, CERM, 100 μ F, 6.3 V, +/- 20%, X5R, 1210	1210	GRM32ER60J107ME20L	Murata
C16, C18	2	8200pF	CAP, CERM, 8200 pF, 25 V, +/- 10%, X7R, 0603	0603	GRM188R71E822KA01D	Murata
C17	1	68pF	CAP, CERM, 68 pF, 50 V, +/- 5%, C0G/NP0, 0603	0603	GRM1885C1H680JA01D	Murata
J1, J2	2		Terminal Block, 5.08 mm, 2x1, Brass, TH	2x1 5.08 mm Terminal Block	ED120/2DS	On-Shore Technology
J3, J4	2		Header, 100mil, 2x1, Gold, TH	Header, 100mil, 2x1, TH	HTSW-102-07-G-S	Samtec
L1	1	1.8uH	Inductor, Shielded, Powdered Iron, 1.8 μ H, 5.8 A, 0.021 ohm, SMD	4.1x4.1mm	74438357018	Würth Elektronik
R1	1	100k	RES, 100 k, 5%, 0.1 W, 0603	0603	CRCW0603100KJNEA	Vishay-Dale
R2	1	86.6k	RES, 86.6 k, 1%, 0.1 W, 0603	0603	CRCW060386K6FKEA	Vishay-Dale
R4	1	10	RES, 10, 5%, 0.1 W, 0603	0603	CRCW060310R0JNEA	Vishay-Dale
R5	1	3.48k	RES, 3.48 k, 1%, 0.1 W, 0603	0603	CRCW06033K48FKEA	Vishay-Dale
R6	1	6.04k	RES, 6.04 k, 1%, 0.1 W, 0603	0603	CRCW06036K04FKEA	Vishay-Dale
R7	1	69.8k	RES, 69.8 k, 1%, 0.1 W, 0603	0603	CRCW060369K8FKEA	Vishay-Dale
R8	1	12.1k	RES, 12.1 k, 1%, 0.1 W, 0603	0603	CRCW060312K1FKEA	Vishay-Dale
R9	1	30.9k	RES, 30.9 k, 1%, 0.1 W, 0603	0603	CRCW060330K9FKEA	Vishay-Dale
SH-J1, SH-J2	2	1x2	Shunt, 100mil, Gold plated, Black	Shunt	SNT-100-BK-G	Samtec
TP1, TP2, TP3, TP4, TP5, TP6, TP7, TP8, TP9, TP10, TP11, TP12, TP13, TP14, TP15	15		Test Point, Miniature, SMT	Testpoint_Keystone_Miniature	5015	Keystone
U1	1		4.5-V to 17-V Input, 8-A Synchronous Step-Down Voltage Regulator, RNV0018B (VQFN-HR-18)	RNV0018B	TPS54424RNV	Texas Instruments
C1, C2	0	22uF	CAP, CERM, 22 μ F, 35 V, +/- 20%, X5R, 1206	1206	C3216X5R1V226M160AC	TDK
C10	0	100uF	CAP, CERM, 100 μ F, 6.3 V, +/- 20%, X5R, 1210	1210	GRM32ER60J107ME20L	Murata
C11, C12	0	47uF	CAP, CERM, 47 μ F, 6.3 V, +/- 20%, X5R, 1206	1206	GRM31CR60J476ME19L	Murata
C19	10	100pF	CAP, CERM, 100 pF, 50 V, +/- 5%, C0G/NP0, 0603	0603	885012006057	Würth Elektronik
C20	0	47pF	CAP, CERM, 47 pF, 50 V, +/- 5%, C0G/NP0, 0603	0603	06035A470JAT2A	AVX
R10	0	2.00k	RES, 2.00 k, 1%, 0.1 W, 0603	0603	CRCW06032K00FKEA	Vishay-Dale

STANDARD TERMS FOR EVALUATION MODULES

1. *Delivery:* TI delivers TI evaluation boards, kits, or modules, including any accompanying demonstration software, components, and/or documentation which may be provided together or separately (collectively, an "EVM" or "EVMs") to the User ("User") in accordance with the terms set forth herein. User's acceptance of the EVM is expressly subject to the following terms.
 - 1.1 EVMs are intended solely for product or software developers for use in a research and development setting to facilitate feasibility evaluation, experimentation, or scientific analysis of TI semiconductor products. EVMs have no direct function and are not finished products. EVMs shall not be directly or indirectly assembled as a part or subassembly in any finished product. For clarification, any software or software tools provided with the EVM ("Software") shall not be subject to the terms and conditions set forth herein but rather shall be subject to the applicable terms that accompany such Software
 - 1.2 EVMs are not intended for consumer or household use. EVMs may not be sold, sublicensed, leased, rented, loaned, assigned, or otherwise distributed for commercial purposes by Users, in whole or in part, or used in any finished product or production system.
2. *Limited Warranty and Related Remedies/Disclaimers:*
 - 2.1 These terms do not apply to Software. The warranty, if any, for Software is covered in the applicable Software License Agreement.
 - 2.2 TI warrants that the TI EVM will conform to TI's published specifications for ninety (90) days after the date TI delivers such EVM to User. Notwithstanding the foregoing, TI shall not be liable for a nonconforming EVM if (a) the nonconformity was caused by neglect, misuse or mistreatment by an entity other than TI, including improper installation or testing, or for any EVMs that have been altered or modified in any way by an entity other than TI, (b) the nonconformity resulted from User's design, specifications or instructions for such EVMs or improper system design, or (c) User has not paid on time. Testing and other quality control techniques are used to the extent TI deems necessary. TI does not test all parameters of each EVM. User's claims against TI under this Section 2 are void if User fails to notify TI of any apparent defects in the EVMs within ten (10) business days after delivery, or of any hidden defects with ten (10) business days after the defect has been detected.
 - 2.3 TI's sole liability shall be at its option to repair or replace EVMs that fail to conform to the warranty set forth above, or credit User's account for such EVM. TI's liability under this warranty shall be limited to EVMs that are returned during the warranty period to the address designated by TI and that are determined by TI not to conform to such warranty. If TI elects to repair or replace such EVM, TI shall have a reasonable time to repair such EVM or provide replacements. Repaired EVMs shall be warranted for the remainder of the original warranty period. Replaced EVMs shall be warranted for a new full ninety (90) day warranty period.
3. *Regulatory Notices:*
 - 3.1 *United States*
 - 3.1.1 *Notice applicable to EVMs not FCC-Approved:*

FCC NOTICE: This kit is designed to allow product developers to evaluate electronic components, circuitry, or software associated with the kit to determine whether to incorporate such items in a finished product and software developers to write software applications for use with the end product. This kit is not a finished product and when assembled may not be resold or otherwise marketed unless all required FCC equipment authorizations are first obtained. Operation is subject to the condition that this product not cause harmful interference to licensed radio stations and that this product accept harmful interference. Unless the assembled kit is designed to operate under part 15, part 18 or part 95 of this chapter, the operator of the kit must operate under the authority of an FCC license holder or must secure an experimental authorization under part 5 of this chapter.
 - 3.1.2 *For EVMs annotated as FCC – FEDERAL COMMUNICATIONS COMMISSION Part 15 Compliant:*

CAUTION

This device complies with part 15 of the FCC Rules. Operation is subject to the following two conditions: (1) This device may not cause harmful interference, and (2) this device must accept any interference received, including interference that may cause undesired operation.

Changes or modifications not expressly approved by the party responsible for compliance could void the user's authority to operate the equipment.

FCC Interference Statement for Class A EVM devices

NOTE: This equipment has been tested and found to comply with the limits for a Class A digital device, pursuant to part 15 of the FCC Rules. These limits are designed to provide reasonable protection against harmful interference when the equipment is operated in a commercial environment. This equipment generates, uses, and can radiate radio frequency energy and, if not installed and used in accordance with the instruction manual, may cause harmful interference to radio communications. Operation of this equipment in a residential area is likely to cause harmful interference in which case the user will be required to correct the interference at his own expense.

FCC Interference Statement for Class B EVM devices

NOTE: This equipment has been tested and found to comply with the limits for a Class B digital device, pursuant to part 15 of the FCC Rules. These limits are designed to provide reasonable protection against harmful interference in a residential installation. This equipment generates, uses and can radiate radio frequency energy and, if not installed and used in accordance with the instructions, may cause harmful interference to radio communications. However, there is no guarantee that interference will not occur in a particular installation. If this equipment does cause harmful interference to radio or television reception, which can be determined by turning the equipment off and on, the user is encouraged to try to correct the interference by one or more of the following measures:

- Reorient or relocate the receiving antenna.
- Increase the separation between the equipment and receiver.
- Connect the equipment into an outlet on a circuit different from that to which the receiver is connected.
- Consult the dealer or an experienced radio/TV technician for help.

3.2 Canada

3.2.1 For EVMs issued with an Industry Canada Certificate of Conformance to RSS-210 or RSS-247

Concerning EVMs Including Radio Transmitters:

This device complies with Industry Canada license-exempt RSSs. Operation is subject to the following two conditions:

(1) this device may not cause interference, and (2) this device must accept any interference, including interference that may cause undesired operation of the device.

Concernant les EVMs avec appareils radio:

Le présent appareil est conforme aux CNR d'Industrie Canada applicables aux appareils radio exempts de licence. L'exploitation est autorisée aux deux conditions suivantes: (1) l'appareil ne doit pas produire de brouillage, et (2) l'utilisateur de l'appareil doit accepter tout brouillage radioélectrique subi, même si le brouillage est susceptible d'en compromettre le fonctionnement.

Concerning EVMs Including Detachable Antennas:

Under Industry Canada regulations, this radio transmitter may only operate using an antenna of a type and maximum (or lesser) gain approved for the transmitter by Industry Canada. To reduce potential radio interference to other users, the antenna type and its gain should be so chosen that the equivalent isotropically radiated power (e.i.r.p.) is not more than that necessary for successful communication. This radio transmitter has been approved by Industry Canada to operate with the antenna types listed in the user guide with the maximum permissible gain and required antenna impedance for each antenna type indicated. Antenna types not included in this list, having a gain greater than the maximum gain indicated for that type, are strictly prohibited for use with this device.

Concernant les EVMs avec antennes détachables

Conformément à la réglementation d'Industrie Canada, le présent émetteur radio peut fonctionner avec une antenne d'un type et d'un gain maximal (ou inférieur) approuvé pour l'émetteur par Industrie Canada. Dans le but de réduire les risques de brouillage radioélectrique à l'intention des autres utilisateurs, il faut choisir le type d'antenne et son gain de sorte que la puissance isotrope rayonnée équivalente (p.i.r.e.) ne dépasse pas l'intensité nécessaire à l'établissement d'une communication satisfaisante. Le présent émetteur radio a été approuvé par Industrie Canada pour fonctionner avec les types d'antenne énumérés dans le manuel d'usage et ayant un gain admissible maximal et l'impédance requise pour chaque type d'antenne. Les types d'antenne non inclus dans cette liste, ou dont le gain est supérieur au gain maximal indiqué, sont strictement interdits pour l'exploitation de l'émetteur.

3.3 Japan

3.3.1 *Notice for EVMs delivered in Japan:* Please see http://www.tij.co.jp/lstds/ti_ja/general/eStore/notice_01.page 日本国内に輸入される評価用キット、ボードについては、次のところをご覧ください。
http://www.tij.co.jp/lstds/ti_ja/general/eStore/notice_01.page

3.3.2 *Notice for Users of EVMs Considered "Radio Frequency Products" in Japan:* EVMs entering Japan may not be certified by TI as conforming to Technical Regulations of Radio Law of Japan.

If User uses EVMs in Japan, not certified to Technical Regulations of Radio Law of Japan, User is required to follow the instructions set forth by Radio Law of Japan, which includes, but is not limited to, the instructions below with respect to EVMs (which for the avoidance of doubt are stated strictly for convenience and should be verified by User):

1. Use EVMs in a shielded room or any other test facility as defined in the notification #173 issued by Ministry of Internal Affairs and Communications on March 28, 2006, based on Sub-section 1.1 of Article 6 of the Ministry's Rule for Enforcement of Radio Law of Japan,
2. Use EVMs only after User obtains the license of Test Radio Station as provided in Radio Law of Japan with respect to EVMs, or
3. Use of EVMs only after User obtains the Technical Regulations Conformity Certification as provided in Radio Law of Japan with respect to EVMs. Also, do not transfer EVMs, unless User gives the same notice above to the transferee. Please note that if User does not follow the instructions above, User will be subject to penalties of Radio Law of Japan.

【無線電波を送信する製品の開発キットをお使いになる際の注意事項】 開発キットの中には技術基準適合証明を受けていないものがあります。技術適合証明を受けていないものご使用に際しては、電波法遵守のため、以下のいずれかの措置を取っていただく必要がありますのでご注意ください。

1. 電波法施行規則第6条第1項第1号に基づく平成18年3月28日総務省告示第173号で定められた電波暗室等の試験設備でご使用いただく。
2. 実験局の免許を取得後ご使用いただく。
3. 技術基準適合証明を取得後ご使用いただく。

なお、本製品は、上記の「ご使用にあたっての注意」を譲渡先、移転先に通知しない限り、譲渡、移転できないものとします。

上記を遵守頂けない場合は、電波法の罰則が適用される可能性があることをご留意ください。日本テキサス・インスツルメンツ株式会社
東京都新宿区西新宿 6 丁目 2 4 番 1 号
西新宿三井ビル

3.3.3 *Notice for EVMs for Power Line Communication:* Please see http://www.tij.co.jp/lstds/ti_ja/general/eStore/notice_02.page
電力線搬送波通信についての開発キットをお使いになる際の注意事項については、次のところをご覧ください。 http://www.tij.co.jp/lstds/ti_ja/general/eStore/notice_02.page

3.4 *European Union*

3.4.1 *For EVMs subject to EU Directive 2014/30/EU (Electromagnetic Compatibility Directive):*

This is a class A product intended for use in environments other than domestic environments that are connected to a low-voltage power-supply network that supplies buildings used for domestic purposes. In a domestic environment this product may cause radio interference in which case the user may be required to take adequate measures.

4 *EVM Use Restrictions and Warnings:*

4.1 EVMS ARE NOT FOR USE IN FUNCTIONAL SAFETY AND/OR SAFETY CRITICAL EVALUATIONS, INCLUDING BUT NOT LIMITED TO EVALUATIONS OF LIFE SUPPORT APPLICATIONS.

4.2 User must read and apply the user guide and other available documentation provided by TI regarding the EVM prior to handling or using the EVM, including without limitation any warning or restriction notices. The notices contain important safety information related to, for example, temperatures and voltages.

4.3 *Safety-Related Warnings and Restrictions:*

4.3.1 User shall operate the EVM within TI's recommended specifications and environmental considerations stated in the user guide, other available documentation provided by TI, and any other applicable requirements and employ reasonable and customary safeguards. Exceeding the specified performance ratings and specifications (including but not limited to input and output voltage, current, power, and environmental ranges) for the EVM may cause personal injury or death, or property damage. If there are questions concerning performance ratings and specifications, User should contact a TI field representative prior to connecting interface electronics including input power and intended loads. Any loads applied outside of the specified output range may also result in unintended and/or inaccurate operation and/or possible permanent damage to the EVM and/or interface electronics. Please consult the EVM user guide prior to connecting any load to the EVM output. If there is uncertainty as to the load specification, please contact a TI field representative. During normal operation, even with the inputs and outputs kept within the specified allowable ranges, some circuit components may have elevated case temperatures. These components include but are not limited to linear regulators, switching transistors, pass transistors, current sense resistors, and heat sinks, which can be identified using the information in the associated documentation. When working with the EVM, please be aware that the EVM may become very warm.

4.3.2 EVMs are intended solely for use by technically qualified, professional electronics experts who are familiar with the dangers and application risks associated with handling electrical mechanical components, systems, and subsystems. User assumes all responsibility and liability for proper and safe handling and use of the EVM by User or its employees, affiliates, contractors or designees. User assumes all responsibility and liability to ensure that any interfaces (electronic and/or mechanical) between the EVM and any human body are designed with suitable isolation and means to safely limit accessible leakage currents to minimize the risk of electrical shock hazard. User assumes all responsibility and liability for any improper or unsafe handling or use of the EVM by User or its employees, affiliates, contractors or designees.

4.4 User assumes all responsibility and liability to determine whether the EVM is subject to any applicable international, federal, state, or local laws and regulations related to User's handling and use of the EVM and, if applicable, User assumes all responsibility and liability for compliance in all respects with such laws and regulations. User assumes all responsibility and liability for proper disposal and recycling of the EVM consistent with all applicable international, federal, state, and local requirements.

5. *Accuracy of Information:* To the extent TI provides information on the availability and function of EVMs, TI attempts to be as accurate as possible. However, TI does not warrant the accuracy of EVM descriptions, EVM availability or other information on its websites as accurate, complete, reliable, current, or error-free.

6. *Disclaimers:*

6.1 EXCEPT AS SET FORTH ABOVE, EVMS AND ANY MATERIALS PROVIDED WITH THE EVM (INCLUDING, BUT NOT LIMITED TO, REFERENCE DESIGNS AND THE DESIGN OF THE EVM ITSELF) ARE PROVIDED "AS IS" AND "WITH ALL FAULTS." TI DISCLAIMS ALL OTHER WARRANTIES, EXPRESS OR IMPLIED, REGARDING SUCH ITEMS, INCLUDING BUT NOT LIMITED TO ANY EPIDEMIC FAILURE WARRANTY OR IMPLIED WARRANTIES OF MERCHANTABILITY OR FITNESS FOR A PARTICULAR PURPOSE OR NON-INFRINGEMENT OF ANY THIRD PARTY PATENTS, COPYRIGHTS, TRADE SECRETS OR OTHER INTELLECTUAL PROPERTY RIGHTS.

6.2 EXCEPT FOR THE LIMITED RIGHT TO USE THE EVM SET FORTH HEREIN, NOTHING IN THESE TERMS SHALL BE CONSTRUED AS GRANTING OR CONFERRING ANY RIGHTS BY LICENSE, PATENT, OR ANY OTHER INDUSTRIAL OR INTELLECTUAL PROPERTY RIGHT OF TI, ITS SUPPLIERS/LICENSORS OR ANY OTHER THIRD PARTY, TO USE THE EVM IN ANY FINISHED END-USER OR READY-TO-USE FINAL PRODUCT, OR FOR ANY INVENTION, DISCOVERY OR IMPROVEMENT, REGARDLESS OF WHEN MADE, CONCEIVED OR ACQUIRED.

7. *USER'S INDEMNITY OBLIGATIONS AND REPRESENTATIONS.* USER WILL DEFEND, INDEMNIFY AND HOLD TI, ITS LICENSORS AND THEIR REPRESENTATIVES HARMLESS FROM AND AGAINST ANY AND ALL CLAIMS, DAMAGES, LOSSES, EXPENSES, COSTS AND LIABILITIES (COLLECTIVELY, "CLAIMS") ARISING OUT OF OR IN CONNECTION WITH ANY HANDLING OR USE OF THE EVM THAT IS NOT IN ACCORDANCE WITH THESE TERMS. THIS OBLIGATION SHALL APPLY WHETHER CLAIMS ARISE UNDER STATUTE, REGULATION, OR THE LAW OF TORT, CONTRACT OR ANY OTHER LEGAL THEORY, AND EVEN IF THE EVM FAILS TO PERFORM AS DESCRIBED OR EXPECTED.

8. *Limitations on Damages and Liability:*

8.1 *General Limitations.* IN NO EVENT SHALL TI BE LIABLE FOR ANY SPECIAL, COLLATERAL, INDIRECT, PUNITIVE, INCIDENTAL, CONSEQUENTIAL, OR EXEMPLARY DAMAGES IN CONNECTION WITH OR ARISING OUT OF THESE TERMS OR THE USE OF THE EVMS, REGARDLESS OF WHETHER TI HAS BEEN ADVISED OF THE POSSIBILITY OF SUCH DAMAGES. EXCLUDED DAMAGES INCLUDE, BUT ARE NOT LIMITED TO, COST OF REMOVAL OR REINSTALLATION, ANCILLARY COSTS TO THE PROCUREMENT OF SUBSTITUTE GOODS OR SERVICES, RETESTING, OUTSIDE COMPUTER TIME, LABOR COSTS, LOSS OF GOODWILL, LOSS OF PROFITS, LOSS OF SAVINGS, LOSS OF USE, LOSS OF DATA, OR BUSINESS INTERRUPTION. NO CLAIM, SUIT OR ACTION SHALL BE BROUGHT AGAINST TI MORE THAN TWELVE (12) MONTHS AFTER THE EVENT THAT GAVE RISE TO THE CAUSE OF ACTION HAS OCCURRED.

8.2 *Specific Limitations.* IN NO EVENT SHALL TI'S AGGREGATE LIABILITY FROM ANY USE OF AN EVM PROVIDED HEREUNDER, INCLUDING FROM ANY WARRANTY, INDEMNITY OR OTHER OBLIGATION ARISING OUT OF OR IN CONNECTION WITH THESE TERMS, EXCEED THE TOTAL AMOUNT PAID TO TI BY USER FOR THE PARTICULAR EVM(S) AT ISSUE DURING THE PRIOR TWELVE (12) MONTHS WITH RESPECT TO WHICH LOSSES OR DAMAGES ARE CLAIMED. THE EXISTENCE OF MORE THAN ONE CLAIM SHALL NOT ENLARGE OR EXTEND THIS LIMIT.

9. *Return Policy.* Except as otherwise provided, TI does not offer any refunds, returns, or exchanges. Furthermore, no return of EVM(s) will be accepted if the package has been opened and no return of the EVM(s) will be accepted if they are damaged or otherwise not in a resalable condition. If User feels it has been incorrectly charged for the EVM(s) it ordered or that delivery violates the applicable order, User should contact TI. All refunds will be made in full within thirty (30) working days from the return of the components(s), excluding any postage or packaging costs.

10. *Governing Law:* These terms and conditions shall be governed by and interpreted in accordance with the laws of the State of Texas, without reference to conflict-of-laws principles. User agrees that non-exclusive jurisdiction for any dispute arising out of or relating to these terms and conditions lies within courts located in the State of Texas and consents to venue in Dallas County, Texas. Notwithstanding the foregoing, any judgment may be enforced in any United States or foreign court, and TI may seek injunctive relief in any United States or foreign court.

IMPORTANT NOTICE FOR TI DESIGN INFORMATION AND RESOURCES

Texas Instruments Incorporated ("TI") technical, application or other design advice, services or information, including, but not limited to, reference designs and materials relating to evaluation modules, (collectively, "TI Resources") are intended to assist designers who are developing applications that incorporate TI products; by downloading, accessing or using any particular TI Resource in any way, you (individually or, if you are acting on behalf of a company, your company) agree to use it solely for this purpose and subject to the terms of this Notice.

TI's provision of TI Resources does not expand or otherwise alter TI's applicable published warranties or warranty disclaimers for TI products, and no additional obligations or liabilities arise from TI providing such TI Resources. TI reserves the right to make corrections, enhancements, improvements and other changes to its TI Resources.

You understand and agree that you remain responsible for using your independent analysis, evaluation and judgment in designing your applications and that you have full and exclusive responsibility to assure the safety of your applications and compliance of your applications (and of all TI products used in or for your applications) with all applicable regulations, laws and other applicable requirements. You represent that, with respect to your applications, you have all the necessary expertise to create and implement safeguards that (1) anticipate dangerous consequences of failures, (2) monitor failures and their consequences, and (3) lessen the likelihood of failures that might cause harm and take appropriate actions. You agree that prior to using or distributing any applications that include TI products, you will thoroughly test such applications and the functionality of such TI products as used in such applications. TI has not conducted any testing other than that specifically described in the published documentation for a particular TI Resource.

You are authorized to use, copy and modify any individual TI Resource only in connection with the development of applications that include the TI product(s) identified in such TI Resource. NO OTHER LICENSE, EXPRESS OR IMPLIED, BY ESTOPPEL OR OTHERWISE TO ANY OTHER TI INTELLECTUAL PROPERTY RIGHT, AND NO LICENSE TO ANY TECHNOLOGY OR INTELLECTUAL PROPERTY RIGHT OF TI OR ANY THIRD PARTY IS GRANTED HEREIN, including but not limited to any patent right, copyright, mask work right, or other intellectual property right relating to any combination, machine, or process in which TI products or services are used. Information regarding or referencing third-party products or services does not constitute a license to use such products or services, or a warranty or endorsement thereof. Use of TI Resources may require a license from a third party under the patents or other intellectual property of the third party, or a license from TI under the patents or other intellectual property of TI.

TI RESOURCES ARE PROVIDED "AS IS" AND WITH ALL FAULTS. TI DISCLAIMS ALL OTHER WARRANTIES OR REPRESENTATIONS, EXPRESS OR IMPLIED, REGARDING TI RESOURCES OR USE THEREOF, INCLUDING BUT NOT LIMITED TO ACCURACY OR COMPLETENESS, TITLE, ANY EPIDEMIC FAILURE WARRANTY AND ANY IMPLIED WARRANTIES OF MERCHANTABILITY, FITNESS FOR A PARTICULAR PURPOSE, AND NON-INFRINGEMENT OF ANY THIRD PARTY INTELLECTUAL PROPERTY RIGHTS.

TI SHALL NOT BE LIABLE FOR AND SHALL NOT DEFEND OR INDEMNIFY YOU AGAINST ANY CLAIM, INCLUDING BUT NOT LIMITED TO ANY INFRINGEMENT CLAIM THAT RELATES TO OR IS BASED ON ANY COMBINATION OF PRODUCTS EVEN IF DESCRIBED IN TI RESOURCES OR OTHERWISE. IN NO EVENT SHALL TI BE LIABLE FOR ANY ACTUAL, DIRECT, SPECIAL, COLLATERAL, INDIRECT, PUNITIVE, INCIDENTAL, CONSEQUENTIAL OR EXEMPLARY DAMAGES IN CONNECTION WITH OR ARISING OUT OF TI RESOURCES OR USE THEREOF, AND REGARDLESS OF WHETHER TI HAS BEEN ADVISED OF THE POSSIBILITY OF SUCH DAMAGES.

You agree to fully indemnify TI and its representatives against any damages, costs, losses, and/or liabilities arising out of your non-compliance with the terms and provisions of this Notice.

This Notice applies to TI Resources. Additional terms apply to the use and purchase of certain types of materials, TI products and services. These include; without limitation, TI's standard terms for semiconductor products (<http://www.ti.com/sc/docs/stdterms.htm>), [evaluation modules](#), and [samples](http://www.ti.com/sc/docs/sampterm.htm) (<http://www.ti.com/sc/docs/sampterm.htm>).

Mailing Address: Texas Instruments, Post Office Box 655303, Dallas, Texas 75265
Copyright © 2017, Texas Instruments Incorporated