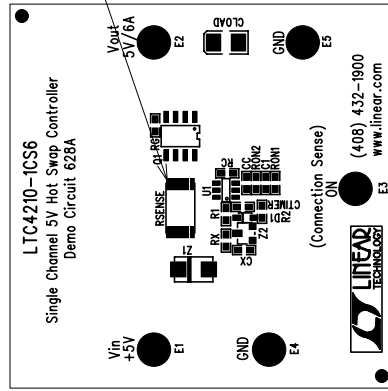
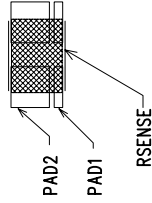


REVISIONS			
REV	DESCRIPTION	APPR	DATE



INSTALL RSENSE SEE DETAIL A
EACH TERMINAL OF RSENSE MUST SOLDER WITH PAD1 AND PAD2



DETAIL A

Silkscreen Top

NOTES : Unless Otherwise Specified

1. Glue down RSENSE Resistor to prevent shift before reflow solder. See detail A.
2. BREAK BOARDS FROM THE PANEL WHEN ASSEMBLY IS COMPLETE.
3. OPTIONAL COMPONENTS ARE UNSTUFFED AND SHOULD BE FREE OF SOLDER AFTER ASSEMBLY.

ASSY DRAWING

APPROVALS		LINEAR TECHNOLOGY		1630 McCarthy Blvd. Milpitas, CA 95035 PH: (408)432-1900	
DRAWN	INIT	DATE			
CHECK					
DESIGN	JUNE WU	12/9/02			
ENGR	ERIC T.	12/9/02			
TITLE:			LTC4210-1CS6, Single Channel 5V Hot Swap Controller		
SIZE			A		
REV.			A		
SCALE = NONE			DES-250042		
			SHT 1 of 1		