

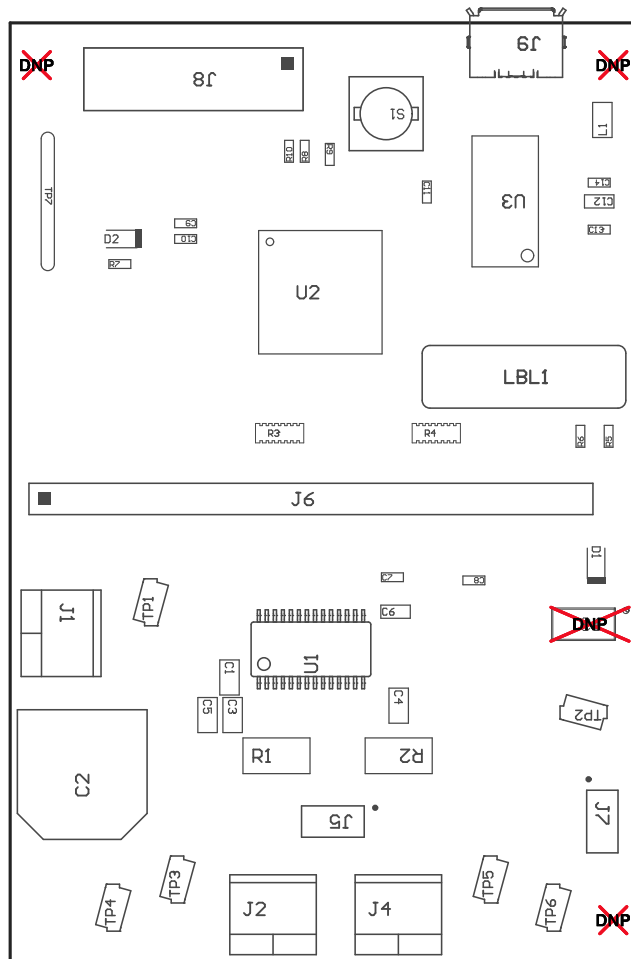
ZZ5 ■ Shorting plug TP7 shall be raised to minimum height of 250mils above PCB

ZZ4 ■ These assemblies must comply with workmanship standards IPC-A-610 Class 2, unless otherwise specified.

Z23 ■ These assemblies must be clean and free from flux and all contaminants. Use of no clean flux is not acceptable.

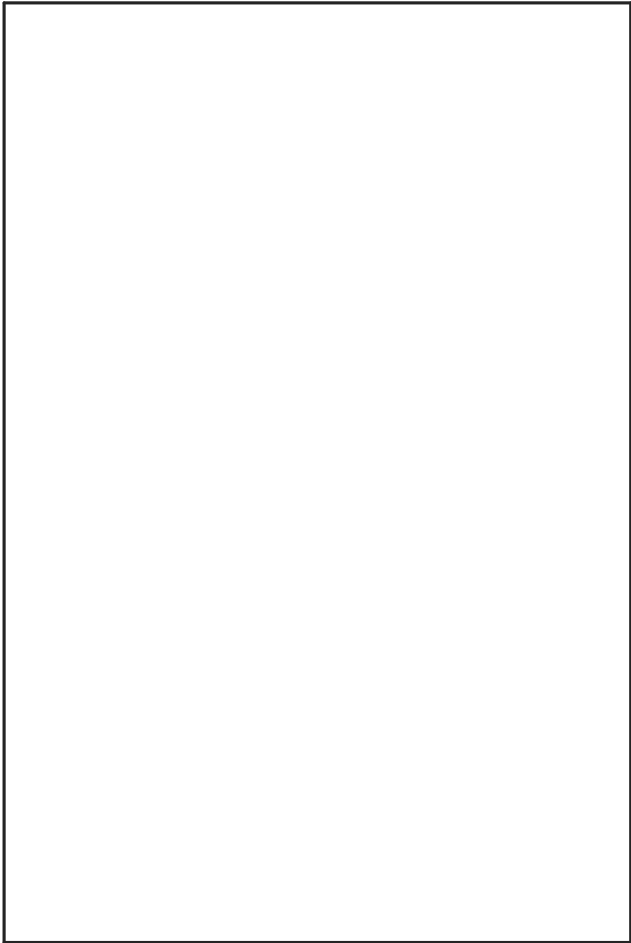
Z22 ■ These assemblies are ESD sensitive, ESD precautions shall be observed.

ZZ1 ■ Install label in silkscreened box after final wash. Text shall be 8 pt font. Text shall be per the Label Table in the PDF schematic.



COMPONENTS MARKED 'DNP' SHOULD NOT BE POPULATED.  
ASSEMBLY VARIANT: 003

PCB VIEWED FROM TOP SIDE	BOARD #: MDBU004	REV: A	SVN REV: Not In VersionControl
	TID #: N/A		
PLOT NAME = Top Assembly Drawing	GENERATED : 7/13/2015 8:37:39 PM		TEXAS INSTRUMENTS



COMPONENTS MARKED 'DNP' SHOULD NOT BE POPULATED.  
ASSEMBLY VARIANT: 003

PCB VIEWED FROM BOTTOM SIDE	BOARD #: MDBU004	REV: A	SUN REV: Not In VersionControl
	TID #: N/A		
PLOT NAME = Bottom Assembly Drawing	GENERATED : 7/13/2015 8:37:40 PM		TEXAS INSTRUMENTS