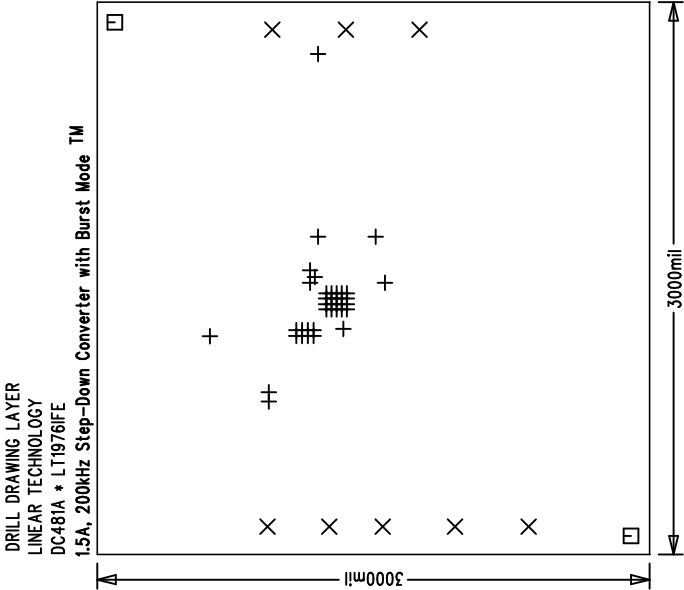



REVISIONS			
REV	APPR	DATE	



- NOTES: UNLESS OTHERWISE SPECIFIED
- ARTWORK P/N DC481 REV A.
  - FAB PER IPC-A-600
  - MATERIAL: EPOXY FIBERGLASS, NEMA GRADE FR-4  
FINISHED THICKNESS TO BE .062 +/- .005 INCH  
WITH 2 OZ. COPPER ON TWO OUTER LAYERS AND  
1 OZ. COPPER ON TWO INTERNAL LAYERS.  
FLAMABILITY RATING: 94 V-0 MINIMUM .
  - SIZE: CUT TO DIMENSIONS AND TOLERANCES SHOWN.  
0.00 ARE PRIMARY DATUMS.
  - DRILLING: DRILL HOLES PER SCHEDULE. PLATE THROUGH  
HOLES WITH COPPER, .001 INCH THICK MIN. ALL  
HOLE SIZES ARE SPECIFIED AFTER PLATING.  
HOLE LOCATION TOLERANCES ARE +/- .003  
INCH IN RELATION TO CENTER
  - FINISH: SMOBC USING LPI BOTH SIDES, GREEN PREFERRABLE.  
SILKSCREEN COMPONENT SIDE WITH WHITE NON-  
CONDUCTIVE INK.
  - FILL UP ALL VIAS WITH SOLDER.
  - DROP ALL UNUSED PADS ON INNER LAYERS.
  - DO NOT ALTER ARTWORK e.g. TO ADD LOGO OR DATE CODE.

SIZE	QTY	SYM	PLTD
10	39	+	PLTD
94	8	X	PLTD
70	2	□	NPLTD

## Fabrication Drawing

APPROVALS				 <b>LINEAR</b> TECHNOLOGY		1630 McCarthy Blvd. Milpitas, CA 95035 PH: (408)432-1900	
		INIT	DATE				
DRAWN							
CHECK							
DESIGN		Rudy B.					
ENGR		Keiths					
				TITLE: 1.5A, 200kHz Step-Down Converter with Burst Mode™			
SIZE		NONE		Demo Circuit 481		REV. A	
SCALE = NONE				DESIGN #230554		SHT 1 of 1	