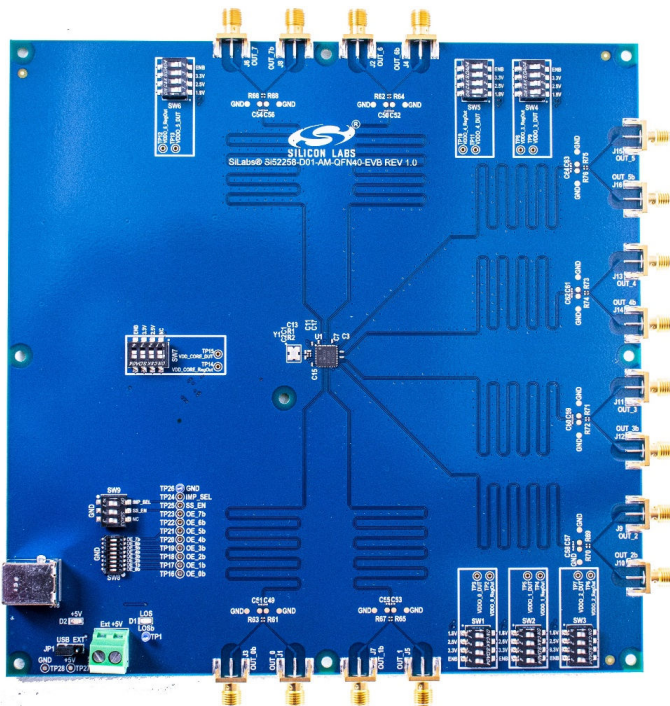


UG399: Si52258-EVB User's Guide (Using Si52258-D01-AM-QFN40-EVB)

The Si52258-EVB is used for evaluating the eight output Si52258A-D01AM Automotive grade PCIe Reference Clock Generator. The Si52258A-D01AM device uses the on-board 25 MHz crystal as reference clock source and generates 8 copies of a 100 MHz HCSL format output clock compliant to PCIe Gen 1/2/3/4/5 common clock and separate reference clock specifications.



EVB FEATURES

- Powered from either USB port or external +5V power supply.
- On-board 25 MHz crystal reference.
- Programmable device core VDD supply for operation at 3.3 V, 2.5 V, or 1.8 V.
- Programmable VDDO (output driver) supplies allow each of the clock output banks to have its own power supply voltage selectable from 3.3 V, 2.5 V, or 1.8 V.
- SMA connectors for all output clocks.
- PCIe compliant spread spectrum enabled/disabled via on-board switch.
- Internal output termination switch selectable for 100 Ω or 85 Ω operation.
- Output enable (OE) control switch per output.
- All output trace lengths matched to 10 inches.
- Loss of Signal (LOS) indication LED.

Table of Contents

- 1. **Functional Block Diagram** **3**
- 2. **Si52258-EVB Operation** **4**
 - 2.1 EVB Configuration: Switches & Jumpers 4
- 3. **LEDs** **6**
- 4. **Output Clocks** **7**
- 5. **Si52258-EVB Rev 1.0 Schematics**. **8**

1. Functional Block Diagram

Below is a functional block diagram of the Si52258-EVB. The +5V required by the EVB can come from a powered USB connection (only +5V is required) or from an external +5V power supply.

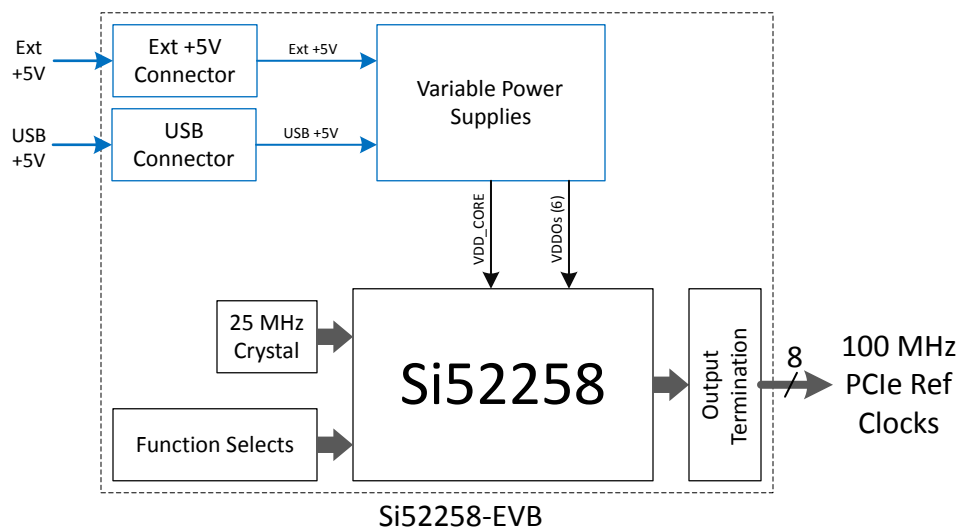


Figure 1.1. Si52258-EVB Functional Block Diagram

2. Si52258-EVB Operation

2.1 EVB Configuration: Switches & Jumpers

Power Supplies:

DIP switches SW1 – SW7 control the on-board power supplies. The table below is a guide to show how to select output voltages for each supply and the EVB default settings. Jumper JP1 selects the source of the +5V used by all the power supply regulators. JP1 jumper pin 1 to 2 selects USB as power source (default) and pin 2 to 3 selects external +5V source via J17 terminal block (refer to schematic).

Switch Position:		1	2	3	4	
DIP Switch #	Control Function	1.8V*	2.5V*	3.3V*	Enable	EVB Default
SW1	VDDO0	0	1	1	0	Enabled, +1.8V
SW2	VDDO1	0	1	1	0	Enabled, +1.8V
SW3	VDDO2	0	1	1	0	Enabled, +1.8V
SW4	VDDO3	0	1	1	0	Enabled, +1.8V
SW5	VDDO4	0	1	1	0	Enabled, +1.8V
SW6	VDDO5	0	1	1	0	Enabled, +1.8V
SW7	VDD_CORE	NC	1	1	0	Enabled, +1.8V

Note:

- 0 = Switch Position Closed (On)
- 1 = Switch Position Open (Off)

***Caution:** Only 1 voltage select switch position can be 0 (On) at a time. Do not set more than 1 position to On and only change switches with power OFF.

Output Enables:

DIP switch SW8 is used to control the clock output enables. There are 8 output enables (OE), one per output clock. The EVB default setting is all outputs enabled.

Switch Position:		1	2	3	4	5	6	7	8	
DIP Switch #	Control Function	OE_0b	OE_1b	OE_2b	OE_3b	OE_4b	OE_5b	OE_6b	OE_7b	EVB Default
SW8	Output Enables	0	0	0	0	0	0	0	0	All Enabled

Note:

- 0 = Switch Position Closed (On)
- 1 = Switch Position Open (Off)

Function Enables:

DIP switch SW9 is used to select Spread Spectrum (On or Off) and Output Termination Impedance (85 Ω or 100 Ω).

Switch Position:		1	2	3	
DIP Switch #	Control Function	IMP_SEL	SS_EN	NC	EVB Default
SW9	Impedance	1	–	NC	Imp = 85 Ω
	Spread Spectrum	–	0	NC	SS_EN (active high) = Off

Note:

- 0 = Switch Position Closed (On)
- 1 = Switch Position Open (Off)

Location of DIP Switches:

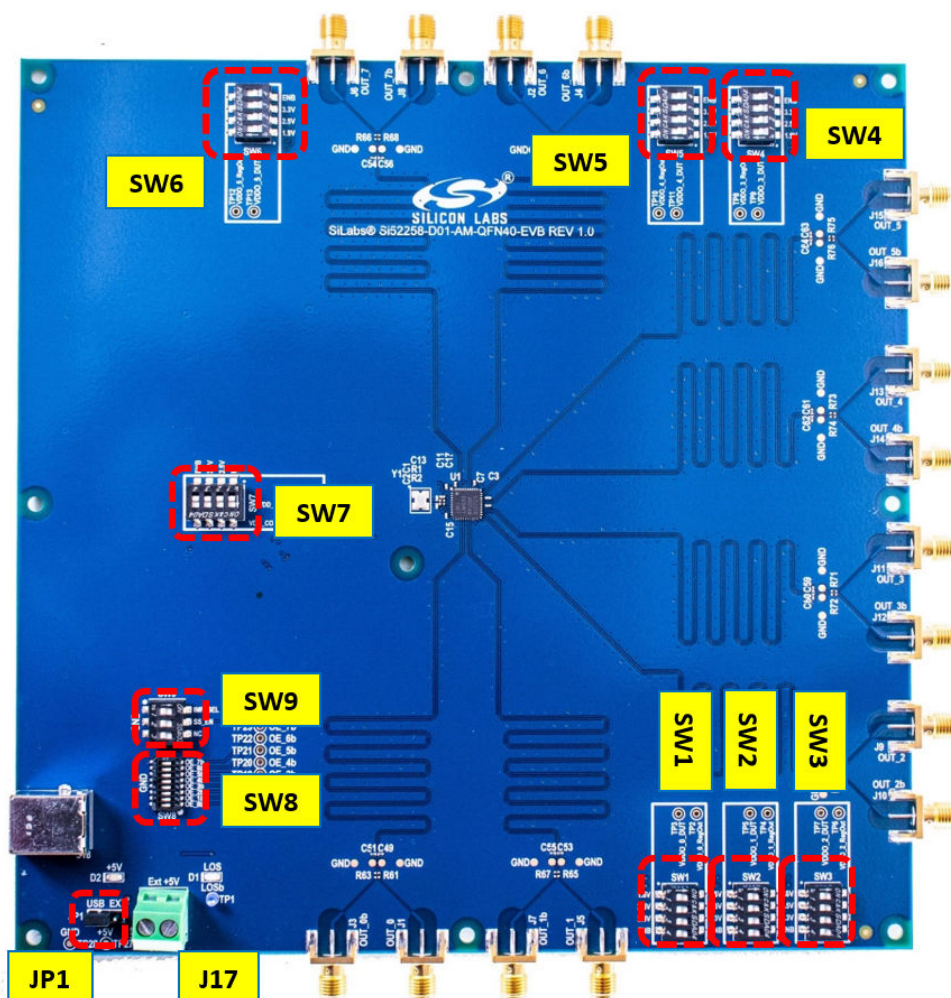


Figure 2.1. DIP Switches Location

3. LEDs

The Si52258-EVB has 2 LEDs defined below.

D2: **Blue LED** indicating +5V presence.

D3: **Red LED** indicating Loss of Signal (LOS). When lit, this LED indicates a problem was detected with the crystal or crystal oscillator circuit which is preventing proper oscillation, resulting in a loss or degradation of the input reference for the Clock Generator.

4. Output Clocks

The Si52258-EVB supports all 8 differential pair output clocks, each terminated as shown in the figure below. The EVB has locations to install 2 pF parallel termination capacitors if desired, which are tagged with "NI" in schematic to indicate they are not installed by default. The outputs are otherwise direct DC coupled to the SMA connectors. Convenient connection pads are also provided for measuring the output with a differential probe, in which case removal of the 0 Ω resistors to isolate the SMA "stub" from the transmission line is suggested.

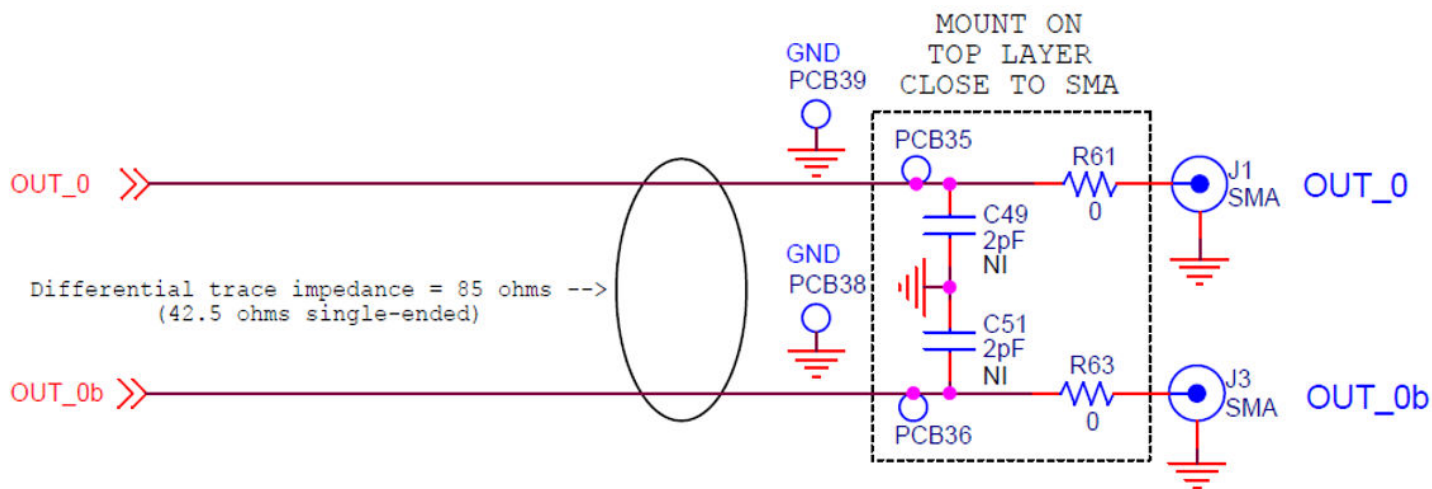
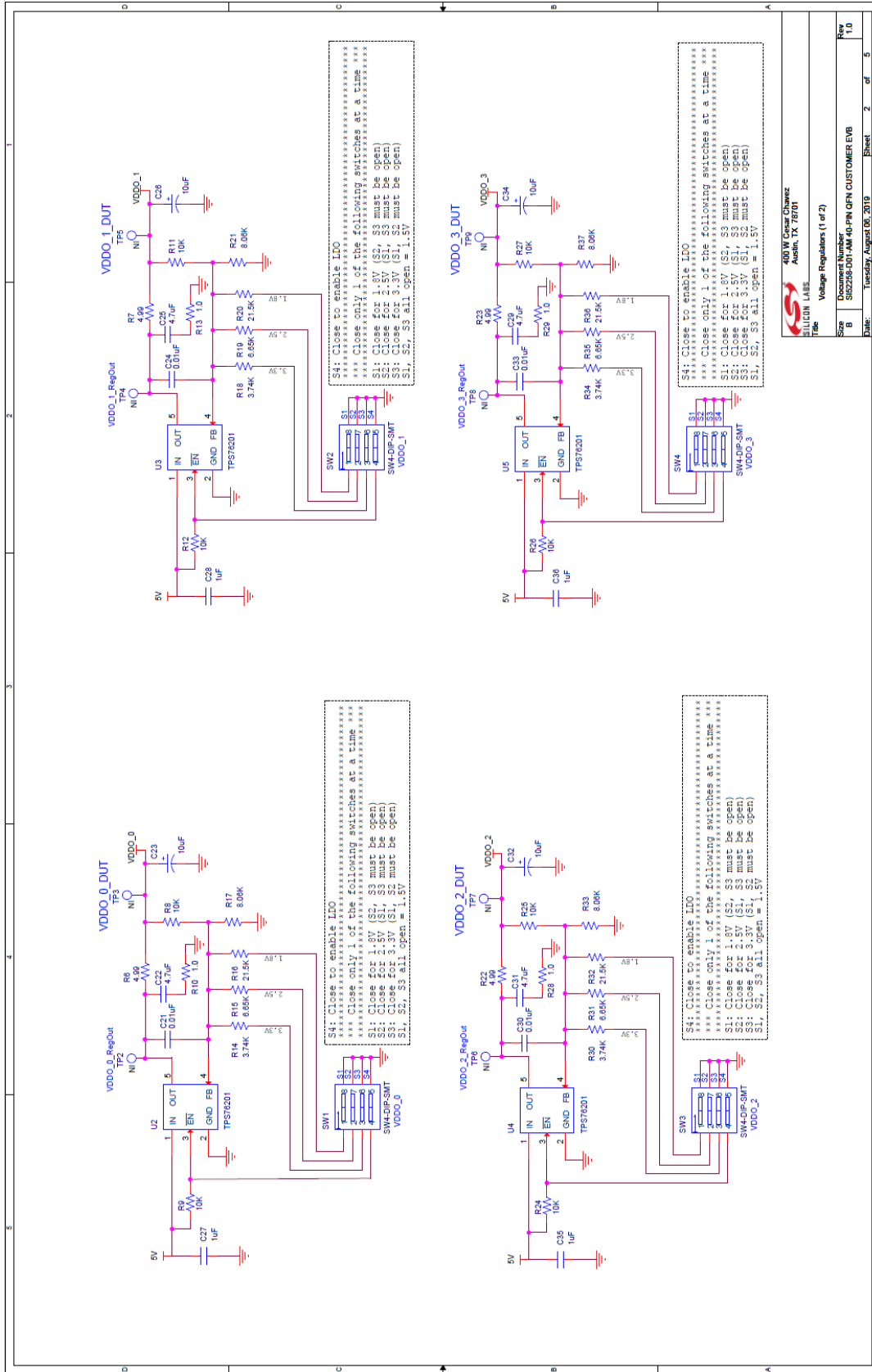


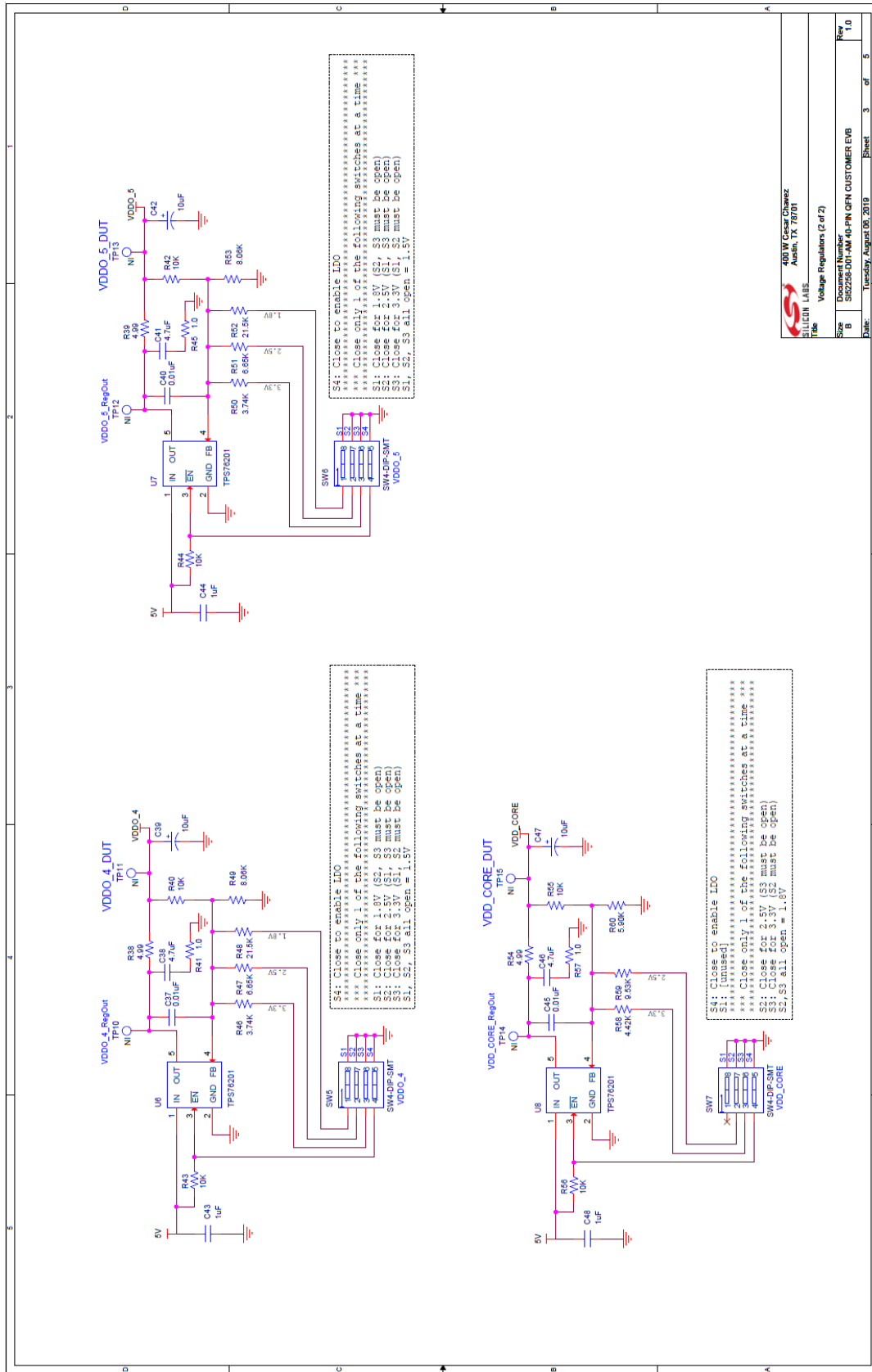
Figure 4.1. Si52258-EVB Output Clock Differential Pair Termination Circuit



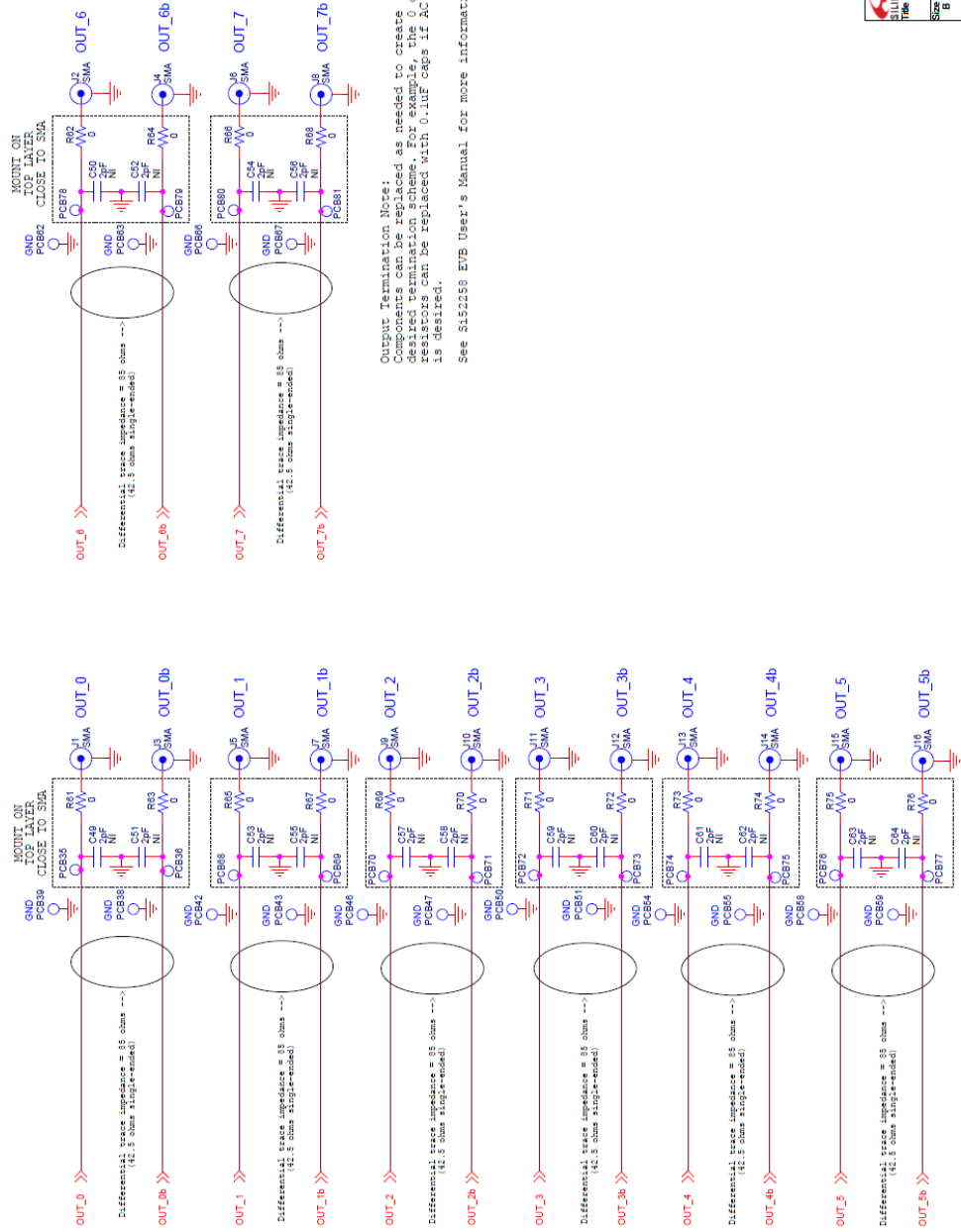
400 W Center Drive
 Silicon Labs
 Austin, TX 78701


Title: Voltage Regulators (1 of 2)

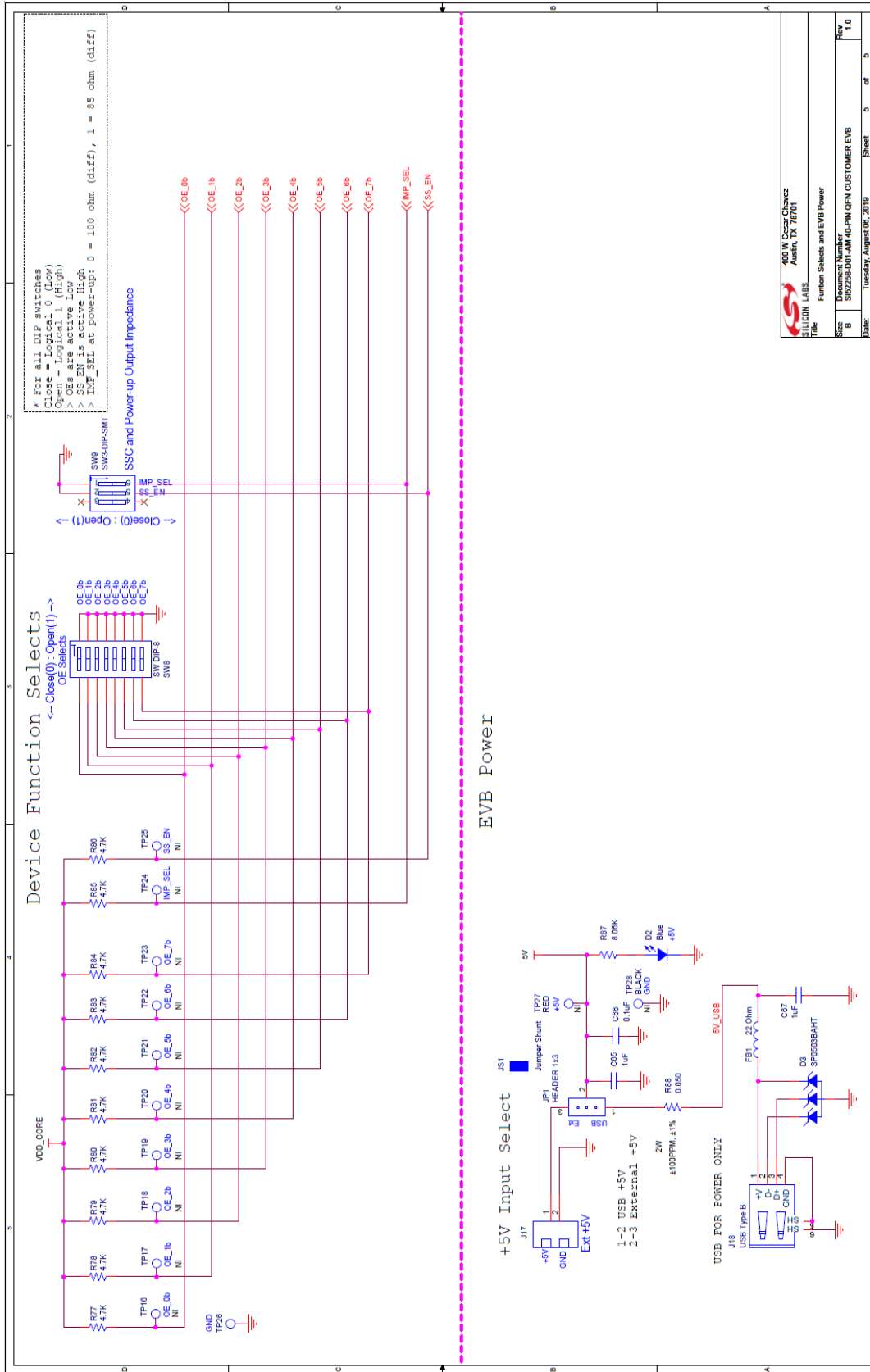
Size: 8
 Drawing Number: 502258-011M40-PIN-QFN-CUSTOMER-EVB
 Rev: 1.0
 Date: Tuesday, August 06, 2019
 Sheet: 2 of 5



Clock Outputs



 4105 W. Canyon Blvd Austin, TX 78701	
Title Clock Outputs	
Size	Rev
B	1.0
Date:	Sheet
Tuesday, August 06, 2019	4 of 5



ARLW Custom Services Austin, TX 78701	
Title: Function Selects and EVB Power	
Size: B	Document Number: SIZ2258-D01-AM-16-PIN-QFN-CUSTOMER-EVB
Date: Tuesday, August 06, 2019	Rev: 1.0
Sheet: 5	of: 5



ClockBuilder Pro

One-click access to Timing tools, documentation, software, source code libraries & more. Available for Windows and iOS (CBGo only).

www.silabs.com/CBPro



Timing Portfolio
www.silabs.com/timing



SW/HW
www.silabs.com/CBPro



Quality
www.silabs.com/quality



Support and Community
community.silabs.com

Disclaimer

Silicon Labs intends to provide customers with the latest, accurate, and in-depth documentation of all peripherals and modules available for system and software implementers using or intending to use the Silicon Labs products. Characterization data, available modules and peripherals, memory sizes and memory addresses refer to each specific device, and "Typical" parameters provided can and do vary in different applications. Application examples described herein are for illustrative purposes only. Silicon Labs reserves the right to make changes without further notice to the product information, specifications, and descriptions herein, and does not give warranties as to the accuracy or completeness of the included information. Without prior notification, Silicon Labs may update product firmware during the manufacturing process for security or reliability reasons. Such changes will not alter the specifications or the performance of the product. Silicon Labs shall have no liability for the consequences of use of the information supplied in this document. This document does not imply or expressly grant any license to design or fabricate any integrated circuits. The products are not designed or authorized to be used within any FDA Class III devices, applications for which FDA premarket approval is required or Life Support Systems without the specific written consent of Silicon Labs. A "Life Support System" is any product or system intended to support or sustain life and/or health, which, if it fails, can be reasonably expected to result in significant personal injury or death. Silicon Labs products are not designed or authorized for military applications. Silicon Labs products shall under no circumstances be used in weapons of mass destruction including (but not limited to) nuclear, biological or chemical weapons, or missiles capable of delivering such weapons. Silicon Labs disclaims all express and implied warranties and shall not be responsible or liable for any injuries or damages related to use of a Silicon Labs product in such unauthorized applications.

Trademark Information

Silicon Laboratories Inc.®, Silicon Laboratories®, Silicon Labs®, SiLabs® and the Silicon Labs logo®, Bluegiga®, Bluegiga Logo®, ClockBuilder®, CMEMS®, DSPLL®, EFM®, EFM32®, EFR®, Ember®, Energy Micro, Energy Micro logo and combinations thereof, "the world's most energy friendly microcontrollers", Ember®, EZLink®, EZRadio®, EZRadioPRO®, Gecko®, Gecko OS, Gecko OS Studio, ISOModem®, Precision32®, ProSLIC®, Simplicity Studio®, SiPHY®, Telegesis, the Telegesis Logo®, USBXpress®, Zentri, the Zentri logo and Zentri DMS, Z-Wave®, and others are trademarks or registered trademarks of Silicon Labs. ARM, CORTEX, Cortex-M3 and THUMB are trademarks or registered trademarks of ARM Holdings. Keil is a registered trademark of ARM Limited. Wi-Fi is a registered trademark of the Wi-Fi Alliance. All other products or brand names mentioned herein are trademarks of their respective holders.



Silicon Laboratories Inc.
400 West Cesar Chavez
Austin, TX 78701
USA

<http://www.silabs.com>