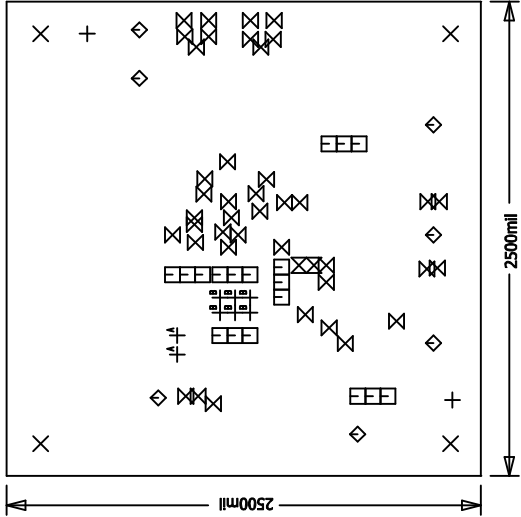


DEMO CIRCUIT 1417A  
Linear Tech. Corp.  
Component Side



SIZE	QTY	SYM	PLATED	TOL
70	2	+	NO	+/-3Mils
187	4	X	YES	+/-3Mils
31	18	□	YES	+/-3Mils
94	7	◇	YES	+/-3Mils
10	41	⊗	YES	+/-3Mils
26	2	⊗	YES	+/-3Mils
40	2	- <sup>A</sup>	YES	+/-3Mils
34	6	- <sup>B</sup>	YES	+/-3Mils

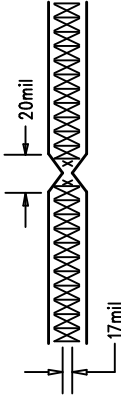
REVISIONS

REV	DESCRIPTION	APPR	DATE
0	1st Prototype		


NOTES : Unless Otherwise Specified

1. FAB PER IPC-A-600.
2. MATERIAL: EPOXY FIBERGLASS, NEMA GRADE FR-4.  
2 OZ. COPPER FINISH ON EXTERNAL LAYERS.  
THICKNESS .062 +/- .006 TOTAL OF 2 LAYERS.  
FLAMMABILITY RATING: 94 V-0 MINIMUM .
3. SIZE: DIMENSIONS SHOWN AND TOLERANCES +/-0.010  
0.00 ARE PRIMARY DATUMS.
4. DRILLING: DRILL HOLES PER SCHEDULE. PLATE THROUGH  
HOLES WITH COPPER, .001 INCH THICK MIN. ALL  
HOLE SIZES ARE SPECIFIED AFTER PLATING.  
HOLE LOCATION TOLERANCES ARE +/-3MIL  
INCH IN RELATION TO CENTER
5. FINISH: SMOBC USING LPT BOTH SIDES COLOR GREEN.  
GOLD IMMERSION BOTH SIDES.
6. SILKSCREEN : USING WHITE NON-CONDUCTIVE EPOXY INK.
7. DO NOT ALTER ARTWORK TO ADD LOGO OR DATE CODE BUT YOU MAY  
MODIFY PAD SIZE TO MEET END FINISH.
8. PCB's SHOULD BE RoHS COMPLIANT.

9. SCORING:



FABRICATION DRAWING

APPROVALS		 <b>LINEAR</b> TECHNOLOGY 1630 McCarthy Blvd. Milpitas, CA 95035 PH: (408)432-1900	
DRAWN	DATE	TITLE: LT6230CS6/LT6230CS6-10/LT6240HVC55 LOW NOISE, PHOTODIODE TIA	
CHECK			
DESIGN	Rudy/B		
ENGR	Gene/B		
		FD	DEMO CIRCUIT 1417A
		REV.	1
SCALE = NONE		Sheet 1 of 1	