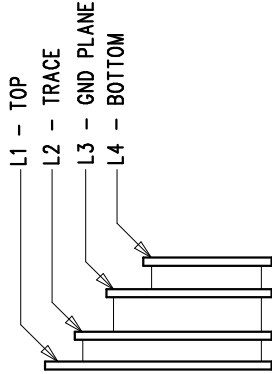


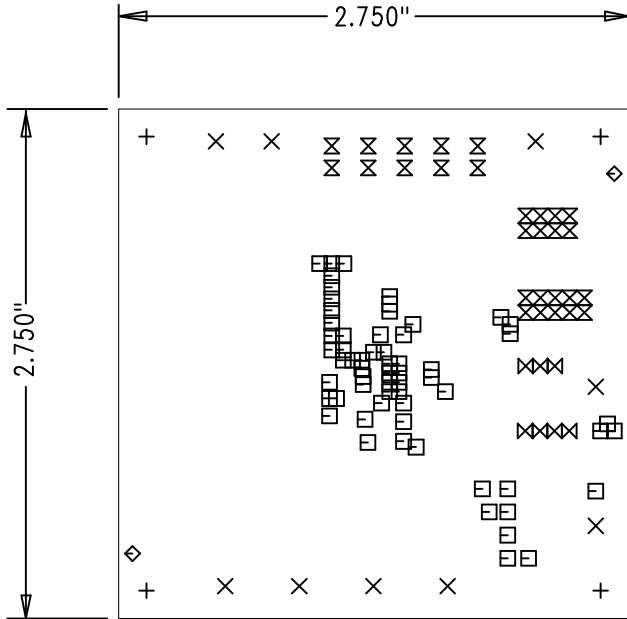
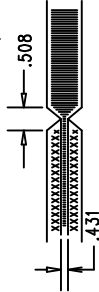
| REVISION HISTORY | | | |
|------------------|-----|-------------|-----------|
| ECO | REV | DESCRIPTION | APP. ENG. |
| 1 | 1 | PRODUCTION | JOSHUA Y. |
| | | | 11-27-12 |

LAYER STRUCTURE



NOTES: UNLESS OTHERWISE SPECIFIED

1. FAB PER IPC-A-600.
2. MATERIAL: -EPOXY FIBERGLASS, NEMA GRADE FR-4
-FINISHED THICKNESS TO BE 0.062 +/- .005
-TOTAL OF 4 LAYERS WITH 2 OZ. CU ON THE OUTER LAYERS AND 1 OZ. CU ON THE INNER LAYERS.
-FLAMMABILITY RATING: 94 V-0 MINIMUM.
3. SIZE: CUT TO DIMENSIONS AND TOLERANCES SHOWN.
0.00 ARE PRIMARY DATUMS.
4. DRILLING: -DRILL HOLES PER SCHEDULE: PLATE THROUGH HOLES WITH COPPER, 0.001" THICK MIN.
-ALL HOLE SIZES ARE SPECIFIED AFTER PLATING.
-HOLE LOCATION TOLERANCES ARE +/-0.003 IN RELATION TO CENTER
5. FINISH: -SMOBC USING LPI BOTH SIDES, COLOR GREEN.
-GOLD IMMERSION BOTH SIDES.
-FOR SILKSCREENS: USE WHITE NON-CONDUCTIVE INK.
6. DO NOT ALTER ARTWORK e.g. TO ADD LOGO OR DATE CODE.
PAD SIZE CAN BE MODIFIED TO MEET END FINISH.
7. PCBs ARE TO BE ROHS COMPLIANT.
8. SCORING FOR PANELIZED PCB (PRODUCTION FAB ONLY):



| SIZE | QTY | SYM | PLATED | TOL |
|-------|-----|-----|--------|----------|
| 0.125 | 4 | + | YES | +/-0.003 |
| 0.095 | 9 | X | YES | +/-0.003 |
| 0.015 | 62 | □ | YES | +/-0.003 |
| 0.07 | 2 | ◇ | NO | +/-0.003 |
| 0.035 | 7 | ⊗ | YES | +/-0.003 |
| 0.04 | 28 | ⊗ | YES | +/-0.003 |

UNLESS OTHERWISE SPECIFIED
DIMENSIONS ARE IN INCHES
TOLERANCES:
0.XX = ± 0.01
0.XXX = ± 0.005
INTERPRET DIM AND TOL
PER ASME Y14.5M-1994
THIRD ANGLE PROJECTION

APPROVALS

PCB DES. HZ
APP ENG. JOSHUA Y.

930 MCCARTHY BLVD
MILPITAS, CA 95035
TEL: (408) 432-1900
WWW.LINEARTECH.COM
IT IS CONFIDENTIAL
FOR CUSTOMER USE ONLY

LINEAR
TECHNOLOGY

TITLE: FABRICATION DRAWING
500KHz NiCd/NiMH BATTERY CHARGER

SIZE IC NO. LTC4011CFE
N/A DEMO CIRCUIT 674B

REV 1

SCALE = NONE

FILENAME: DC674B-1.PCB

SHT 1 OF 1