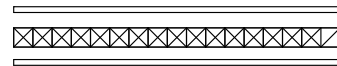
**FABRICATION NOTE:**

- 1:FABRICATE USING LATEST REVISION OF IPC-6012A CLASS 2 OR ABOVE
- 2:FABRICATE USING MASTER ARTWORK STEVAL-ISA168V1 FOR CIRCUIT PATTERN  
NO DEVIATION FROM MASTER ARTWORK ARE PERMITTED WITHOUT WRITTEN APPROVAL FROM AN AUTHORIZED STM REPRESENTATIVE
- 3:VENDOR MUST BE UL QUALIFIED AND BOARDS MUST BE IDENTIFIED WITH APPROPRIATE VENDOR UL IDENTIFICATION MARK, LOT OR JOB NUMER AND PCB MATERIAL FLAMMABILITY RATING (94V-0) MINIMUM
- 4:MATERIAL: FR4 RoHS COMPLIANT MINIMUM 125 C  
SEE "DETAIL "A"" FOR BOARD THICKNESS, COPPER WEIGHT AND LAYER CONSTRUCTION
- 5:SOLDER MASK BOTH SIDE OF BOARD WITH LIQUID PHOTO IMAGEABLE SOLDERMASK COLOR:BLU
- 6:FINISH: NICKEL AND GOLD Au>0.04u 3u<Ni<5u
- 7:FOR SMT COMPONENTS WITH PIN PITCH OF 0.019 INCH OR MORE NO GANG RELIEF OF SOLDER MASK IS ALLOWED
- 8:SILKSCREEN TO BE WHITE, NON CONDUCTIVE, EPOXY INK OR EQUIVALENT
- 9:THIS IS NOT A CONTROLLED IMPEDANCE BOARD
- 10:DESIGNATED AREA OR INSPECTION AND TEST STAMP
- 11:ON PCB MUST BE IDENTIFIED MANUFACTURER LOGO AND PCB TYPE  
(MEANS OF MATERIAL TYPE INDICATED ON THE YELLOW CARD DOCUMENT)
- 12:VENDOR TO PROVIDE BOARD STACK-UP FOR IMPEDANCE APPROVAL PRIOR TO BOARD FABBRICATION.STACK UP AND IMPEDANCE TO INCLUDE COPPER PLATING ON OUTER LAYERS.FAB DRAWING STACK-UP DIMENSION ARE PROVIDED FOR REFERENCE ONLY  
VENDOR TO PROVIDE BOARD FOR IMPEDANCE TEST RESULTS AND COUPON
- 13:TEARDROPPING OF VIAS AND PADS ALLOWED AT PAD TO TRACE INTERSECTION TO INSURE A 2MIL ANULAR RING AT THE JUNCTION
- 14:REMOVE SILKSCREEN FROM SOLDERABLE SURFACE
- 15:ALL BOARD TO BE 100% ELECTRICALLY NETLIST TESTED FOR OPENS ANDION SHORTS. APPLY TEST STAMP IN REFERENCED AREA
- 16:THIS BOARD SHALL BE FULLY COMPLIANT WITH UL796



**DETAIL "A"**LAYER BUILD UP  
(reference only)Cu - 105u  
CORE - 1600u  
Cu - 105u(external Cu th are after plating)  
estimated total thickness 1600u**Finished Hole Tolerance**  
- All units are in Inches -

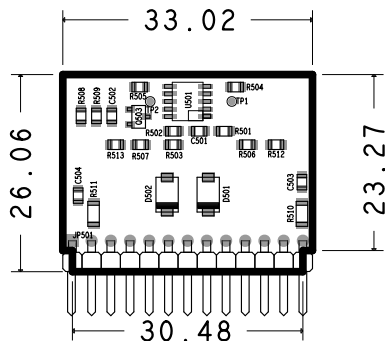
Finish Hole Diameter	Plated Through Finish Hole Diameter	Non Plated Through Finish Hole Diameter
0.008"-0.013"	+0.002/-FHS"	+/-0.002"
0.014"-0.063"	+/-0.003"	+/-0.002"
0.064"-0.156"	+/-0.004"	+/-0.003"
0.157"-0.250"	+/-0.007"	+/-0.004"
0.251"and up	+/-0.007"	+/-0.005"
0.125"	Non Plated Only	+0.003/-0.000"

**DRILL CHART: TOP to BOTTOM**  
ALL UNITS ARE IN MILS

FIGURE	SIZE	PLATED	QTY
A	12.0	PLATED	31
B	40.0	PLATED	13

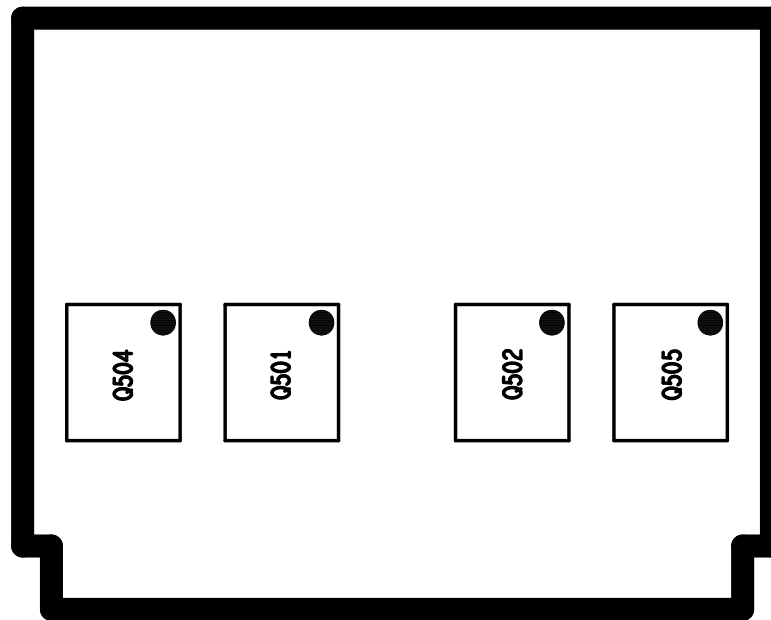
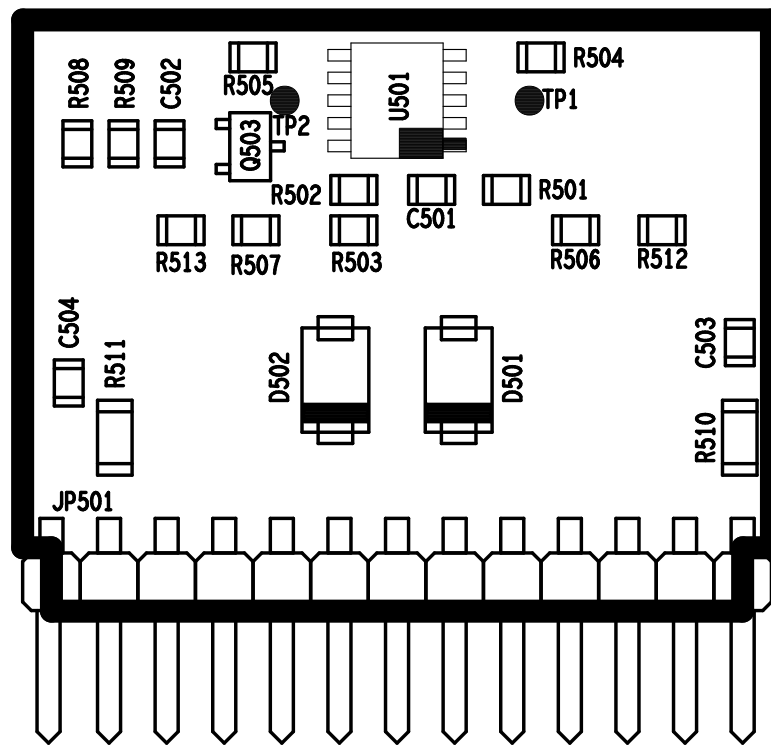
REVISION DATE

		Description  STEVAL - ISA168V1  FABRICATION DRAWING						Symbol STEVAL - ISA168V1		
								Group		
ALL RIGHTS STRICTLY RESERVED. REPRODUCTION OR ISSUE TO THIRD PARTIES IN ANY FORM WHATEVER IS NOT PERMITTED WITHOUT WRITTEN AUTHORIZATION FROM STMicroelectronics.		TOLERANCE UNLESS NOTED UNIT=MM						ISO 	SCALE:	REV. 1
		linear	0 <10	>10 <50	>50 <200	>200	ANG. LES.	Material		
		midle	±0.1	±0.2	±0.3	±0.5	±1°		Treatment and surface finishing	
Approved	date	accurate	±0.05	±0.1	±0.15	±0.25	±30°			



IFARCAD

CODICE PRODOTTO		STEVAL - ISA168V1			
CLIENTE		STM			
DESCRIZIONE VISTA		09 PIANO DI MONTAGGIO TOP			
DATA	29-01-2015	REVISIONE	1	DISEGNATORE	F.MERENDA
NOTE	NON USARE PER LA COSTRUZIONE DEL PCB				
RISERVATO - CONFIDENZIALE Questo documento e' di proprieta della societa' IFARCAD e del CLIENTE FINALE che se ne riservano tutti i diritti Eventuali divulgazioni non autorizzate a terze parti saranno perseguite nei termini di legge.					



REVISION DATE



Description

STEVAL-ISA168V1  
PIANO DI MONTAGGIO LATO TOP E BOTTOM

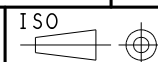
Symbol

STEVAL-ISA168V1

Group

ALL RIGHTS STRICTLY RESERVED. REPRODUCTION OR ISSUE TO THIRD PARTIES IN ANY FORM WHATEVER IS NOT PERMITTED WITHOUT WRITTEN AUTHORIZATION FROM STMicroelectronics.

TOLERANCE UNLESS NOTED  
UNIT=MM



SCALE:

REV.  
1

	0 <10	>10 <50	>50 <200	>200	ANG. LES.
linear					
midle	±0.1	±0.2	±0.3	±0.5	±1°
accurate	±0.05	±0.1	±0.15	±0.25	±30°

Material

Drawn  
*IFARCAD*

date  
29-01-2015

Treatment and surface finishing

Approved

date