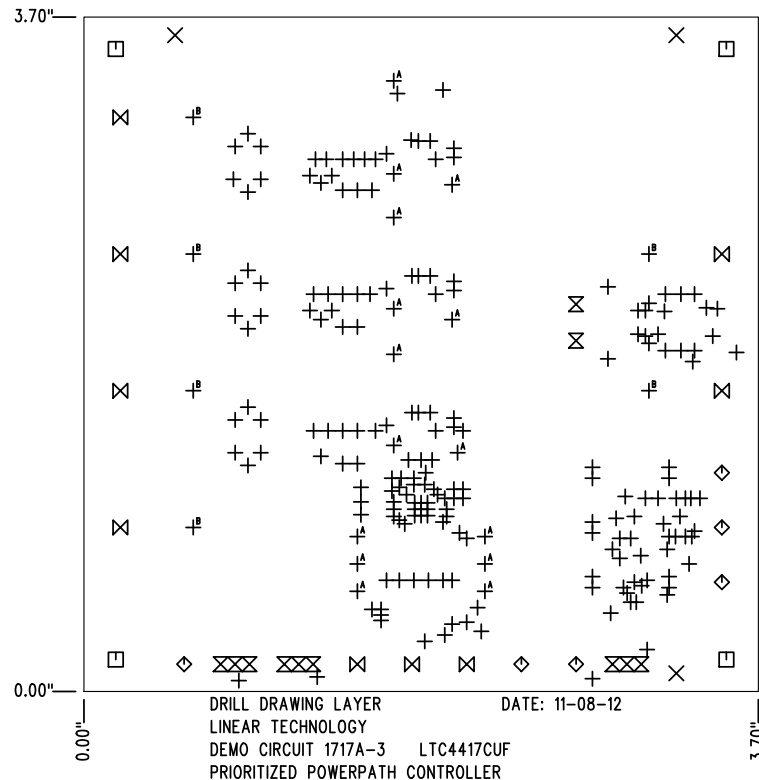
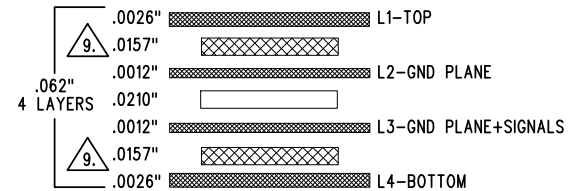


REVISION HISTORY				
ECO	REV	DESCRIPTION	APP. ENG.	DATE
-	3	PRODUCTION	VLADIMIR O.	11-08-12



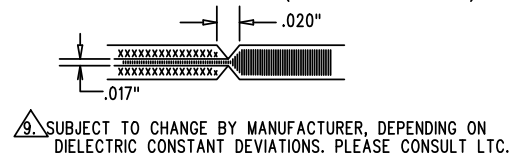
SIZE	QTY	SYM	PLATED	TOL
0.01	196	+	YES	+/-0.003"
0.07	3	×	NO	+/-0.003"
0.19	4	□	NO	+/-0.003"
0.063	6	◇	YES	+/-0.003"
0.035	11	⊗	YES	+/-0.003"
0.094	9	⊗ <sup>A</sup>	YES	+/-0.003"
0.025	15	⊗ <sup>B</sup>	YES	+/-0.003"
0.215	6	⊗ <sup>B</sup>	YES	+/-0.003"

## LAYER STRUCTURE



## NOTES: UNLESS OTHERWISE SPECIFIED

- FAB PER IPC-A-600.
- MATERIAL: -LEAD FREE ASSEMBLY COMPLIANT, ISOLA FR-370HR OR EQUIVALENT  
-FINISHED THICKNESS TO BE 0.062" +/- .005"  
-TOTAL OF 4 LAYERS WITH 2 OZ. CU ON THE OUTER LAYERS AND 1 OZ. CU ON THE INNER LAYERS.  
-FLAMMABILITY RATING: 94 V-0 MINIMUM.
- SIZE: CUT TO DIMENSIONS AND TOLERANCES SHOWN.  
0.00" ARE PRIMARY DATUMS.
- DRILLING: -DRILL HOLES PER SCHEDULE. PLATE THROUGH HOLES WITH COPPER, 0.001" THICK MIN.  
-ALL HOLE SIZES ARE SPECIFIED AFTER PLATING.  
-HOLE LOCATION TOLERANCES ARE +/-0.003" IN RELATION TO CENTER
- FINISH: -SMOBC USING LPI BOTH SIDES, COLOR GREEN.  
-GOLD IMMERSION BOTH SIDES.  
-FOR SILKSCREENS: USE WHITE NON-CONDUCTIVE INK.
- DO NOT ALTER ARTWORK e.g. TO ADD LOGO OR DATE CODE.  
PAD SIZE CAN BE MODIFIED TO MEET END FINISH.
- PCBS ARE TO BE RoHS COMPLIANT.
- SCORING FOR PANELIZED PCB (PRODUCTION FAB ONLY):



UNLESS OTHERWISE SPECIFIED		APPROVALS		<p>1630 MCCARTHY BLVD MILPITAS, CA 95035 PH: (408)432-1900 www.linear.com LTC CONFIDENTIAL- FOR CUSTOMER USE ONLY</p>	
DIMENSIONS ARE IN INCHES TOLERANCES: 0.XX" = ±0.01" 0.XXX" = ±0.005" INTERPRET DIM AND TOL PER ASME Y14.5M-1994 THIRD ANGLE PROJECTION		PCB DES.	KIM T.		
		APP ENG.	VLADIMIR O.	TITLE: FABRICATION DRAWING	
				PRIORITIZED POWERPATH CONTROLLER	
		SCALE = NONE		SIZE N/A	IC NO. LTC4417CUF DEMO CIRCUIT 1717A
				FILENAME: DC1717A-3.PCB	REV 3
				SHT 1 OF 1	