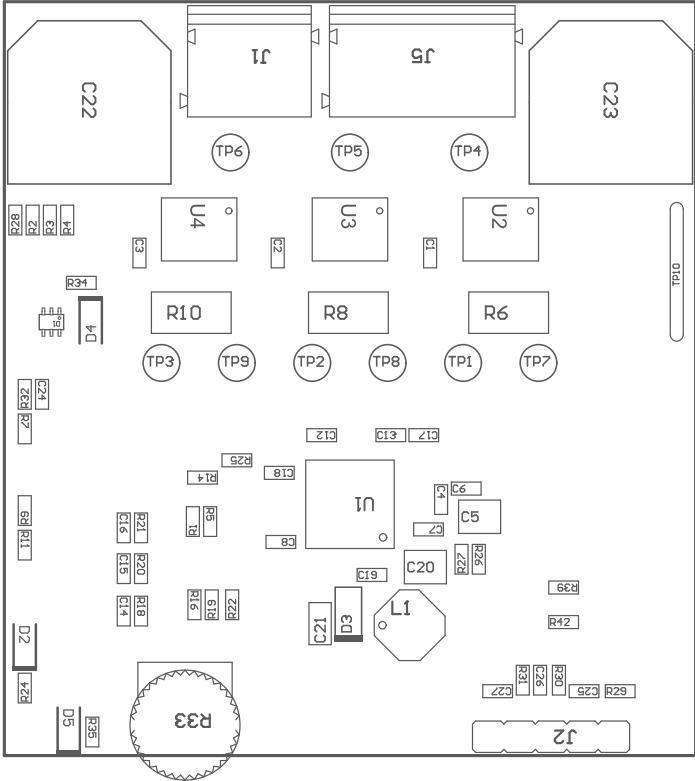
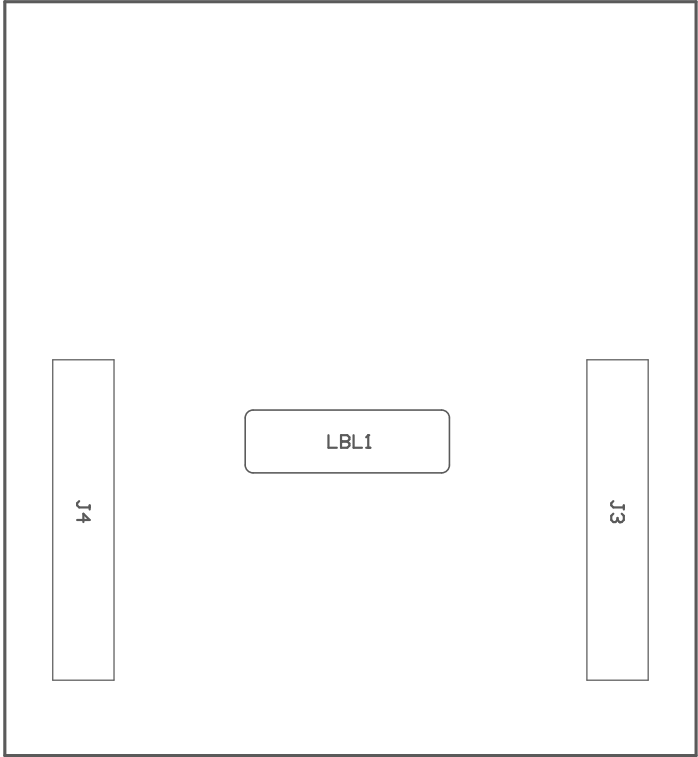


- Z21 ■Install label in silkscreened box after final wash. Text shall be 8 pt font. Text shall be per the Label Table in the PDF schematic.
- Z22 ■These assemblies are ESD sensitive, ESD precautions shall be observed.
- Z23 ■These assemblies must be clean and free from flux and all contaminants. Use of no clean flux is not acceptable.
- Z24 ■These assemblies must comply with workmanship standards IPC-A-610 Class 2, unless otherwise specified.



COMPONENTS MARKED 'DNP' SHOULD NOT BE POPULATED.  
ASSEMBLY VARIANT: 002

|                                  |                                  |                   |                                |
|----------------------------------|----------------------------------|-------------------|--------------------------------|
| PCB VIEWED FROM TOP SIDE         | BOARD #: MDBU017                 | REV: A            | SVN REV: Not In VersionControl |
|                                  | TID #: N/A                       |                   |                                |
| PLOT NAME = Top Assembly Drawing | GENERATED : 2/15/2017 4:42:49 PM | TEXAS INSTRUMENTS |                                |



COMPONENTS MARKED 'DNP' SHOULD NOT BE POPULATED.  
ASSEMBLY VARIANT: 002

|                                     |                                  |        |                                |
|-------------------------------------|----------------------------------|--------|--------------------------------|
| PCB VIEWED FROM BOTTOM SIDE         | BOARD #: MDBU017                 | REV: A | SVN REV: Not In VersionControl |
|                                     | TID #: N/A                       |        |                                |
| PLOT NAME = Bottom Assembly Drawing | GENERATED : 2/15/2017 4:42:50 PM |        | TEXAS INSTRUMENTS              |