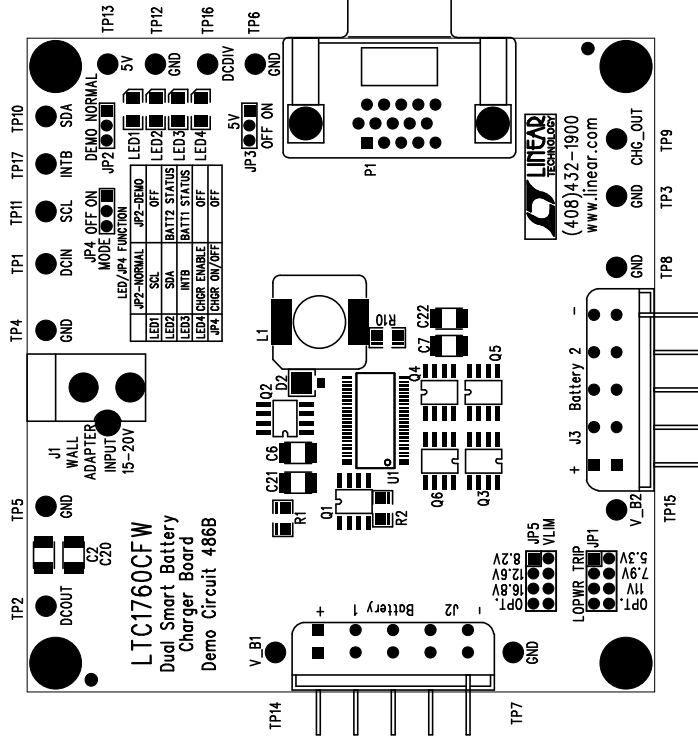
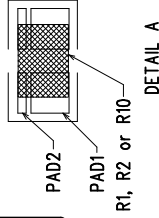


REVISIONS			
REV	DESCRIPTION	APPR	DATE



INSTALL R1,R2 AND R10 SEE DETAIL A  
EACH TERMINAL OF R1, R2 AND R10 MUST SOLDER WITH PAD1 AND PAD2



Silkscreen Top

### NOTES : Unless Otherwise Specified

1. Glue down Resistor R1, R2 AND R10 to prevent shift before reflow solder. See detail A.
2. BREAK BOARDS FROM THE PANEL WHEN ASSEMBLY IS COMPLETE.
3. OPTIONAL COMPONENTS ARE UNSTUFFED AND SHOULD BE FREE OF SOLDER AFTER ASSEMBLY.
4. INSTALL JUMPER SHUNTS:  
JP1: 7.9V JP4: OFF  
JP2: NORMAL JP5: 12.6V  
JP3: ON

### ASSY DRAWING

APPROVALS		LINEAR TECHNOLOGY		1630 McCarthy Blvd. Milpitas, CA 95035 PH: (408)432-1900	
DRAWN	INIT	DATE			
CHECK					
DESIGN	JW	04/26/11	TITLE: LTC1760CFW, Dual Smart Battery Charger Board		
ENGR	J. Yee	04/26/11			
		SIZE	A	DEMO	REV. 1
				DC486B	
		SCALE = NONE		SHT 1 of 1	