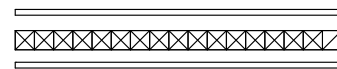


FABRICATION NOTE:

- 1:FABRICATE USING LATEST REVISION OF IPC-6012A CLASS 2 OR ABOVE
- 2:FABRICATE USING MASTER ARTWORK STEVAL-ISA166V1 FOR CIRCUIT PATTERN
NO DEVIATION FROM MASTER ARTWORK ARE PERMITTED WITHOUT WRITTEN APPROVAL FROM AN AUTHORIZED STM REPRESENTATIVE
- 3:VENDOR MUST BE UL QUALIFIED AND BOARDS MUST BE IDENTIFIED WITH APPROPRIATE VENDOR UL IDENTIFICATION MARK, LOT OR JOB NUMER AND PCB MATERIAL FLAMMABILITY RATING (94V-0) MINIMUM
- 4:MATERIAL: FR4 RoHS COMPLIANT MINIMUM 125 C
SEE "DETAIL "A"" FOR BOARD THICKNESS, COPPER WEIGHT AND LAYER CONSTRUCTION
- 5:SOLDER MASK BOTH SIDE OF BOARD WITH LIQUID PHOTO IMAGEABLE SOLDERMASK COLOR:BLU
- 6:FINISH: HASL RoHS6 COMPLIANT
- 7:FOR SMT COMPONENTS WITH PIN PITCH OF 0.019 INCH OR MORE NO GANG RELIEF OF SOLDER MASK IS ALLOWED
- 8:SILKSCREEN TO BE WHITE, NON CONDUCTIVE, EPOXY INK OR EQUIVALENT
- 9:THIS IS NOT A CONTROLLED IMPEDANCE BOARD
- 10:DESIGNATED AREA OR INSPECTION AND TEST STAMP
- 11:ON PCB MUST BE IDENTIFIED MANUFACTURER LOGO AND PCB TYPE
(MEANS OF MATERIAL TYPE INDICATED ON THE YELLOW CARD DOCUMENT)
- 12:VENDOR TO PROVIDE BOARD STACK-UP FOR IMPEDANCE APPROVAL PRIOR TO BOARD FABBRICATION.STACK UP AND IMPEDANCE TO INCLUDE COPPER PLATING ON OUTER LAYERS.FAB DRAWING STACK-UP DIMENSION ARE PROVIDED FOR REFERENCE ONLY
VENDOR TO PROVIDE BOARD FOR IMPEDANCE TEST RESULTS AND COUPON
- 13:TEARDROPPING OF VIAS AND PADS ALLOWED AT PAD TO TRACE INTERSECTION TO INSURE A 2MIL ANULAR RING AT THE JUNCTION
- 14:REMOVE SILKSCREEN FROM SOLDERABLE SURFACE
- 15:ALL BOARD TO BE 100% ELECTRICALLY NETLIST TESTED FOR OPENS ANDION SHORTS. APPLY TEST STAMP IN REFERENCED AREA
- 16:THIS BOARD SHALL BE FULLY COMPLIANT WITH UL796

DETAIL "A"

LAYER BUILD UP
(reference only)



Cu - 105u
CORE - 1600u
Cu - 105u

(external Cu th are after plating)
estimated total thickness 1600u

Finished Hole Tolerance - All units are in Inches -

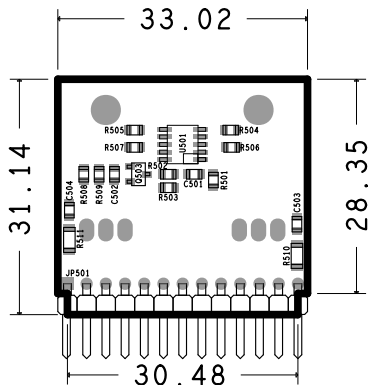
Finish Hole Diameter	Plated Through Finish Hole Diameter	Non Plated Through Finish Hole Diameter
0.008"-0.013"	+0.002/-FHS"	+/-0.002"
0.014"-0.063"	+/-0.003"	+/-0.002"
0.064"-0.156"	+/-0.004"	+/-0.003"
0.157"-0.250"	+/-0.007"	+/-0.004"
0.251"and up	+/-0.007"	+/-0.005"
0.125"	Non Plated Only	+0.003/-0.000"

DRILL CHART: TOP to BOTTOM ALL UNITS ARE IN MILS

FIGURE	SIZE	PLATED	QTY
A	12.0	PLATED	14
B	40.0	PLATED	13
C	47.0	PLATED	6
D	128.0	PLATED	2

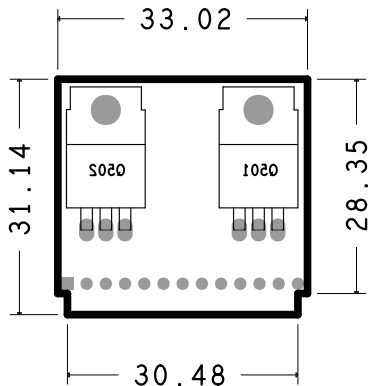
REVISION DATE

	Description		Symbol						
	STEVAL-ISA166V1		STEVAL-ISA166V1						
FABRICATION DRAWING		Group							
ALL RIGHTS STRICTLY RESERVED. REPRODUCTION OR ISSUE TO THIRD PARTIES IN ANY FORM WHATEVER IS NOT PERMITTED WITHOUT WRITTEN AUTHORIZATION FROM STMicroelectronics.	TOLERANCE UNLESS NOTED UNIT=MM			ISO					
	<table border="1"> <tr> <td>linear</td> <td>0 <10</td> <td>>10 <50</td> <td>>50 <200</td> <td>>200</td> <td>ANG. LES.</td> </tr> </table>			linear	0 <10	>10 <50	>50 <200	>200	ANG. LES.
linear	0 <10	>10 <50	>50 <200	>200	ANG. LES.				
Drawn 	date 30-01-2015	midle ± 0.1 ± 0.2 ± 0.3 ± 0.5 $\pm 1^\circ$	Material						
Approved	date	accurate ± 0.05 ± 0.1 ± 0.15 ± 0.25 $\pm 30^\circ$	Treatment and surface finishing						
		REV. 1							



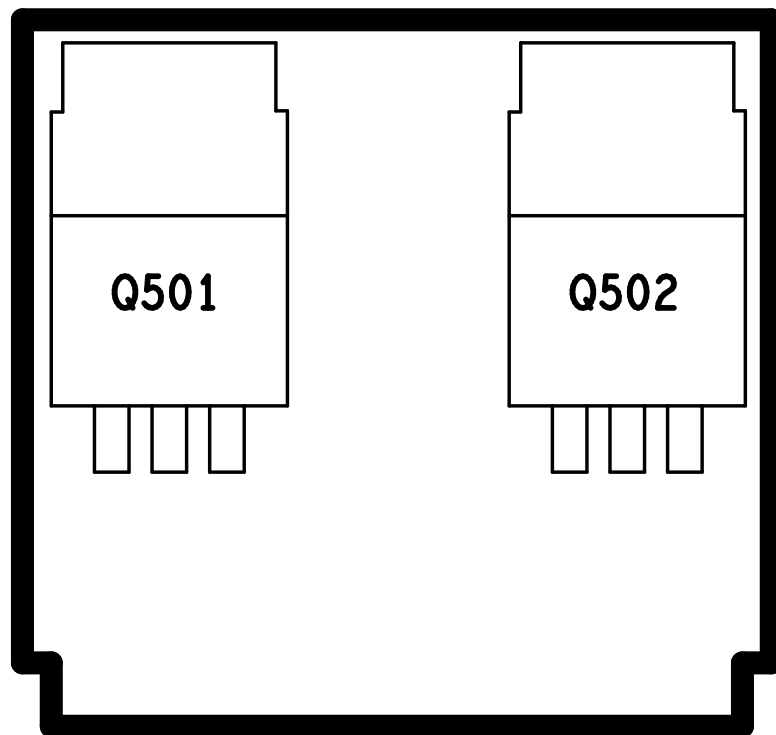
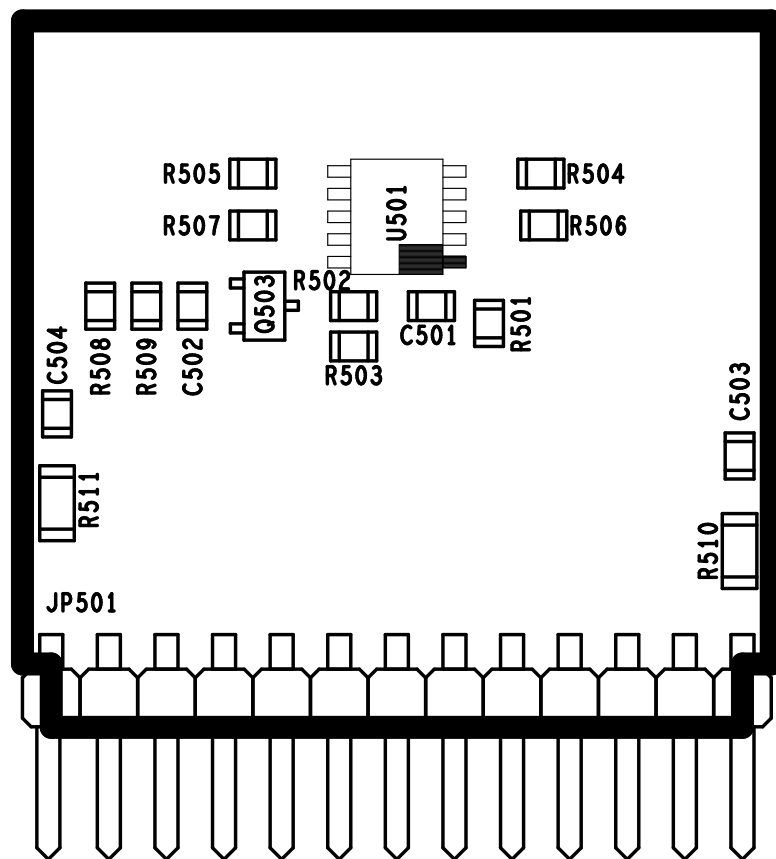
IFARCAD

CODICE PRODOTTO		STEVAL - ISA166V1			
CLIENTE		STM			
DESCRIZIONE VISTA		08 PIANO DI MONTAGGIO TOP			
DATA	30-01-2015	REVISIONE	1	DISEGNATORE	F.MERENDA
NOTE	NON USARE PER LA COSTRUZIONE DEL PCB				
RISERVATO - CONFIDENZIALE Questo documento e' di proprieta della societa' IFARCAD e del CLIENTE FINALE che se ne riservano tutti i diritti Eventuali divulgazioni non autorizzate a terze parti saranno perseguite nei termini di legge.					


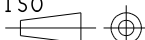



IFARCAD

CODICE PRODOTTO		STEVAL - ISA166V1			
CLIENTE		STM			
DESCRIZIONE VISTA		09 PIANO DI MONTAGGIO BOT			
DATA	30-01-2015	REVISIONE	1	DISEGNATORE	F.MERENDA
NOTE					
RISERVATO - CONFIDENZIALE Questo documento e' di proprieta della societa' IFARCAD e del CLIENTE FINALE che se ne riservano tutti i diritti Eventuali divulgazioni non autorizzate a terze parti saranno perseguite nei termini di legge.					



REVISION DATE

		Description STEVAL - ISA166V1 PIANO DI MONTAGGIO LATO TOP E BOTTOM						Symbol STEVAL - ISA166V1		
								Group		
ALL RIGHTS STRICTLY RESERVED. REPRODUCTION OR ISSUE TO THIRD PARTIES IN ANY FORM WHATEVER IS NOT PERMITTED WITHOUT WRITTEN AUTHORIZATION FROM STMicroelectronics.		TOLERANCE UNLESS NOTED UNIT=MM							SCALE:	REV. 1
		linear	0 <10	>10 <50	>50 <200	>200	ANG. LES.	Material		
		midle	±0.1	±0.2	±0.3	±0.5	±1°			
Drawn 	date 30-01-2015	accurate	±0.05	±0.1	±0.15	±0.25	±30°	Treatment and surface finishing		
Approved	date									