

GND

CHGSTAT

LIPO

CHARGER

PS

GND

DEBUGGER

TEMP ECC608 LIGHT

PWM|INT|RX|TX|SCL|SDA|5V|GND

AN|RST|CS|SCK|SDO|SDI|3V3|GND

®

ATMEGA4808

WIFI

CONN

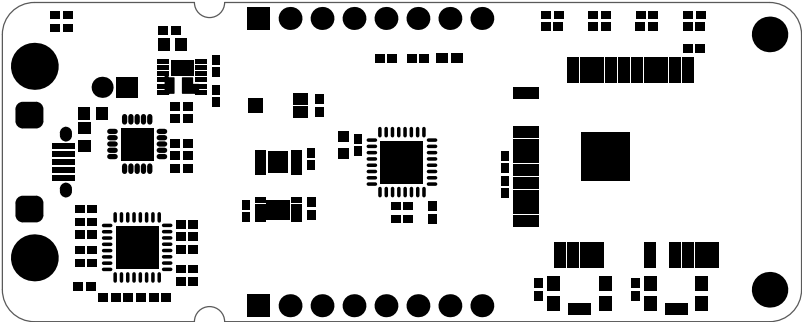
DATA

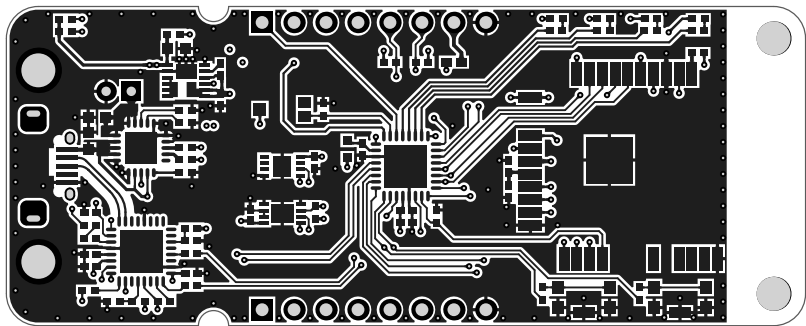
ERROR

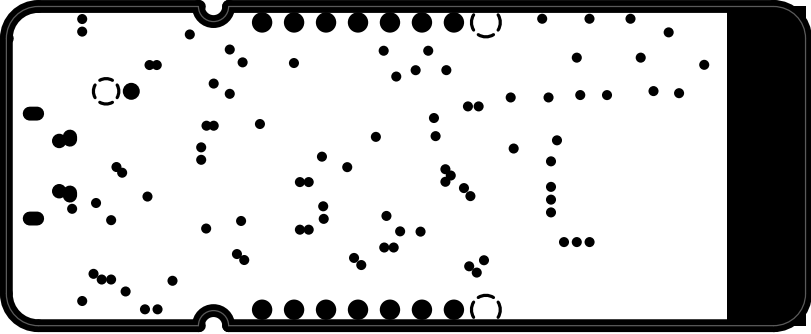
WINC1510

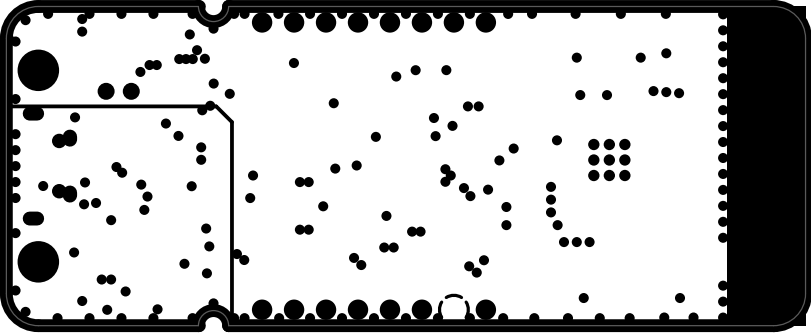
SW1

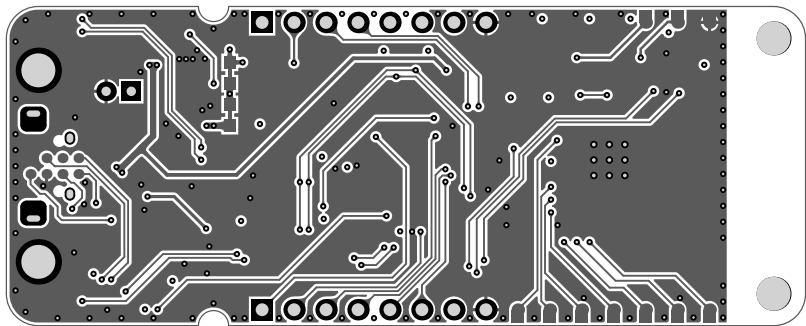
SW0

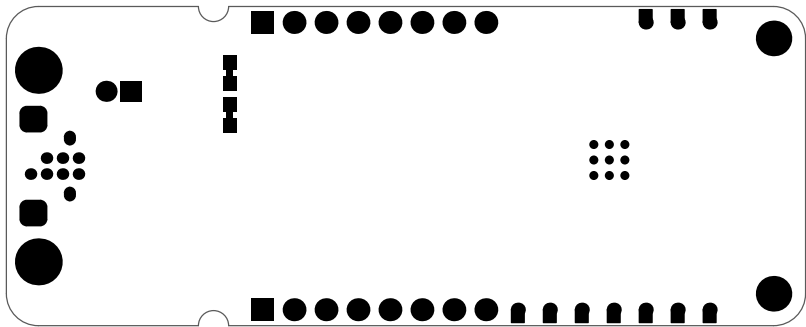
















GND  
TX  
RX



SDA  
SCL  
Gp6  
Gp2  
Gp4  
Gp3  
Gp1



GND  
+5V  
PA5 \ SDA  
PA3 \ SCL  
PC0 \ TX  
PC1 \ RX  
PDE \ INT  
PDE \ PWM

**AVR-IO**

GND  
+3.3V  
MOSI \ PA4  
MISO \ PA2  
SCK \ PA6  
CS \ PC3  
RST \ PA0  
V1 \ PDI



TARGET UEDBG  
NCC



BATT  
TTIP0

+



GND

BOOT

GND

