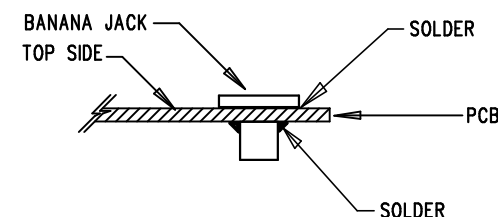


REVISION HISTORY

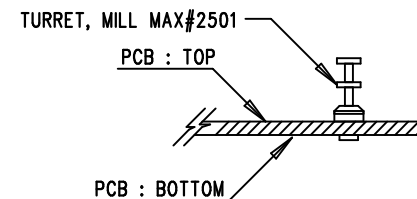
ECO	REV	DESCRIPTION	APPR	DATE
—	3	PRODUCTION	MITCHELL LEE	05-01-12

NOTES: UNLESS OTHERWISE SPECIFIED

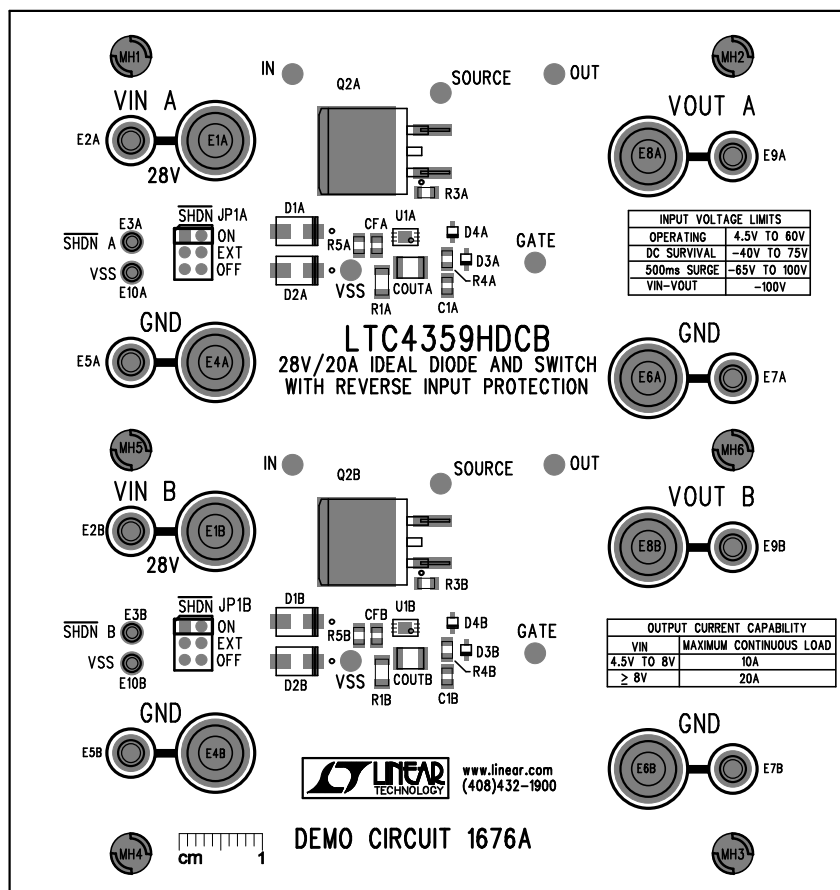
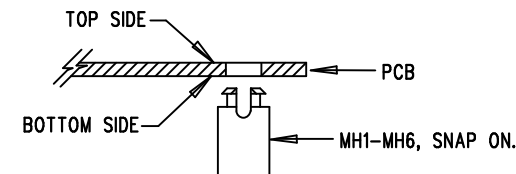
1. WORKMANSHIP SHALL BE IN ACCORDANCE WITH IPC-A-610.
2. ASSEMBLY PROCESS SHALL INCLUDE: REFLOW SOLDER TOP SIDE SMD. MAXIMUM SOLDER TEMPERATURE SHALL BE 240 DEGREES CELSIUS.
3. OMITTED (OPTIONAL) PARTS ARE SPECIFIED ON THE BILL OF MATERIALS. LAND PATTERNS FOR THESE PARTS SHALL BE FREE OF SOLDER. MASK THE SOLDER STENCIL AT THESE LOCATIONS.
4. DEPANELIZE BOARDS AFTER ASSEMBLY AND ROUTE-OUT THE BREAKOUT TABS ON ALL BOARD EDGES.
5. DO NOT APPLY ANY KIND OF ASSEMBLY STAMP OR QA STAMP TO ANY BOARD.
6. INSTALL SHUNTS AT JP1A, JP1B IN POSITIONS AS SHOWN.
7. INSTALL BANANA JACKS E1A,E1B,E4A,E4B,E6A,E6B,E8A,E8B AS SHOWN BELOW:



8. INSTALL TURRETS E2A,E2B,E3A,E3B,E5A,E5B,E7A,E7B, E9A,E9B AS SHOWN BELOW:



9. INSTALL 6 STANDOFFS AT 4 LOCATIONS AS SHOWN BELOW:



APPROVALS

PCB DES. M. HAWKINS

APP ENG. MITCHELL LEE

SCALE = NONE



1630 MCCARTHY BLVD
MILPITAS, CA 95035
PH: (408)432-1900
www.linear.com
LTC CONFIDENTIAL-
FOR CUSTOMER USE ONLY

TITLE: ASSEMBLY DRAWING, TOP
28V/20A IDEAL DIODE AND SWITCH
WITH REVERSE INPUT PROTECTION

SIZE IC NO. LTC4359HDCB
N/A DEMO CIRCUIT 1676A

REV. 3

FILENAME: DC1676A-3.PCB SHT 1 OF 2