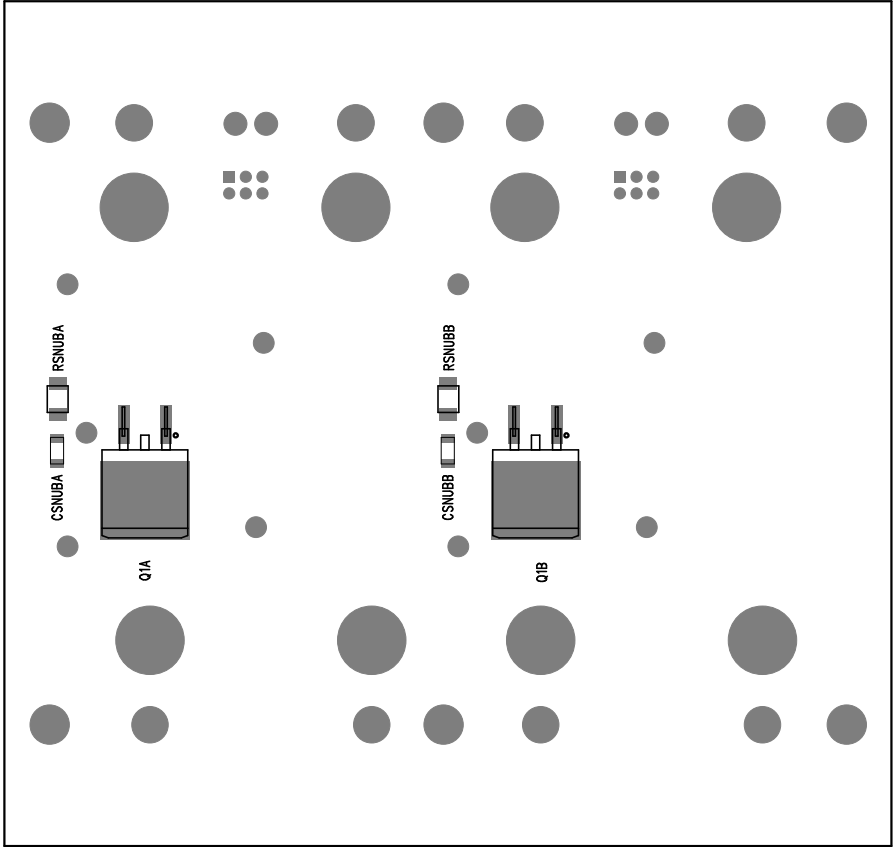


REVISION HISTORY			
ECO	REV	DESCRIPTION	APPR
—	3	PRODUCTION	MITCHELL LEE
			DATE
			05-01-12



APPROVALS		<div> <div> 1830 MCCARTHY BLVD MILPITAS, CA 95035 PH: (408) 332-9000 www.linear.com </div> <div> LINEAR TECHNOLOGY </div> </div> <div> LTC CONFIDENTIAL - FOR CUSTOMER USE ONLY </div>			
PCB DES.	M. HAWKINS	TITLE: ASSEMBLY DRAWING, BOTTOM			
APP ENG.	MITCHELL LEE	28V/20A IDEAL DIODE AND SWITCH			
		WITH REVERSE INPUT PROTECTION			
		SIZE	IC NO.	LTC4359HDCB	REV.
		N/A		DEMO CIRCUIT 1676A	3
SCALE = NONE		FILENAME: DC1676A-3.PCB		SHT 2 OF 2	