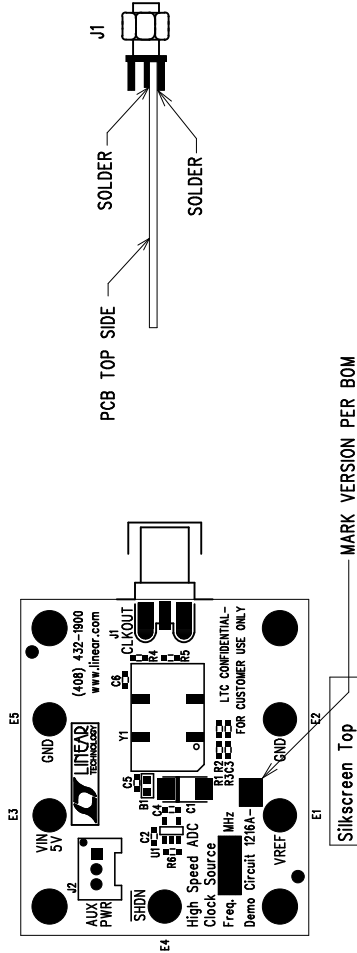


REVISIONS		
REV	DESCRIPTION	DATE




ASSY TOP

ASSEMBLY TYPE	Y1	CLKOUT Freq. (MHz)	R4	C3
DC1216A-A	Crystek, 601964	100MHz	5.1 ohms	OPT
DC1216A-B	Crystek, 602017	122.88MHz	5.1 ohms	OPT
DC1216A-C	Crystek, 602019	80MHz	5.1 ohms	OPT
DC1216A-D	Crystek, 601964	100MHz, PLL Reference	100 ohms	4.7uF

NOTES : Unless Otherwise Specified

1. BREAK BOARDS FROM THE PANEL WHEN ASSEMBLY IS COMPLETE.
2. OPTIONAL COMPONENTS ARE UNSTUFFED AND SHOULD BE FREE OF SOLDER AFTER ASSEMBLY.

ASSY DRAWING

APPROVALS					1630 McCarthy Blvd. Milpitas, CA 95035 PH: (408)432-1900	
PCB DESIGNER		INIT	DATE	TITLE: High Speed ADC Clock Source		
J. WU			1/25/07			
ENGINEER			1/25/07			
CHECK						
SCALE = NONE		SIZE	A	DEMO	DC1216A	REV. 1
				SHT 1 of 1		