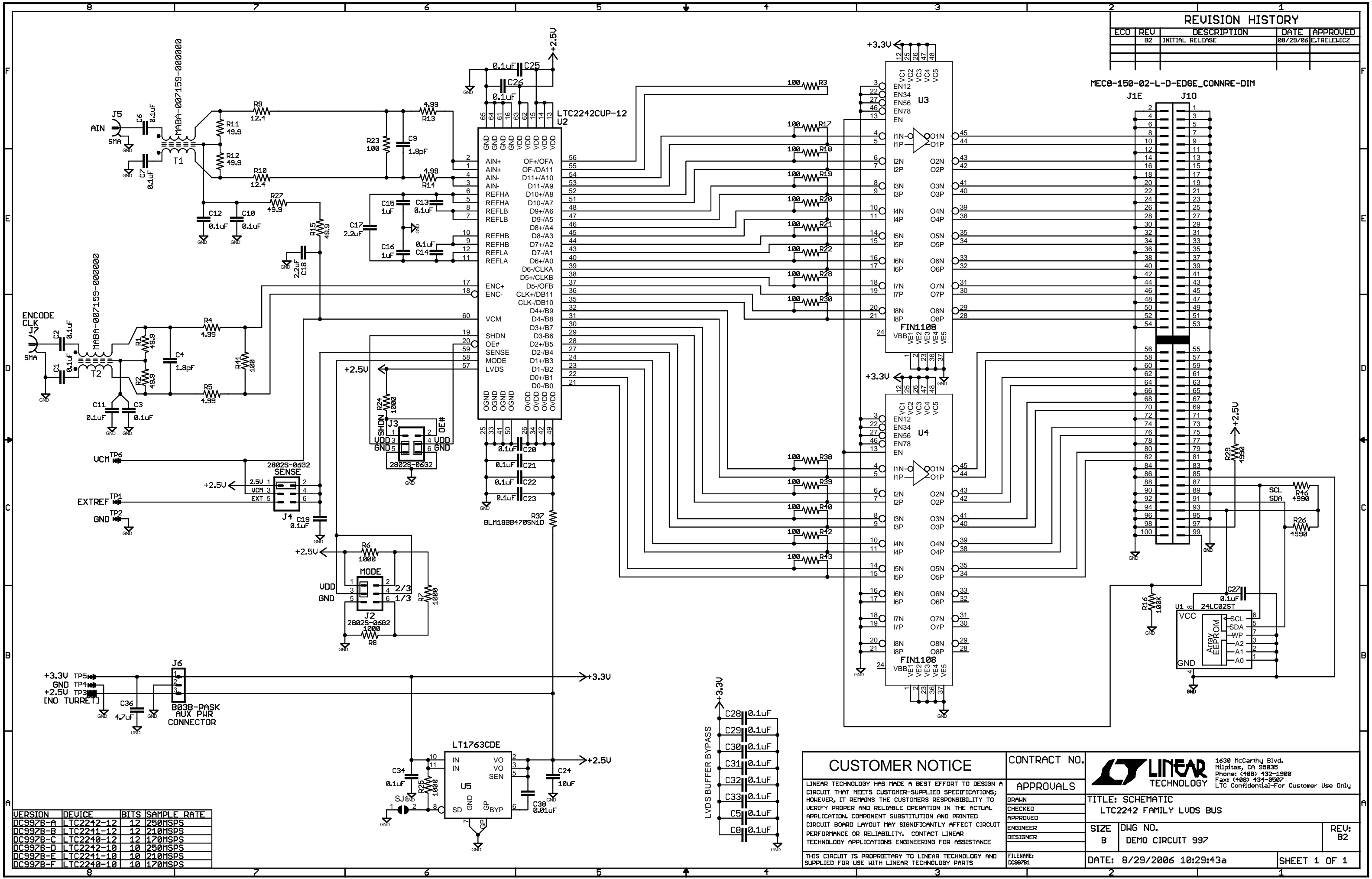


REVISION HISTORY

ECO	REV	DESCRIPTION	DATE	APPROVED
	B2	INITIAL RELEASE	08/29/06	E.TRELEMICZ



VERSION	DEVICE	BITS	SAMPLE RATE
DC997B-A	LTC2242-12	12	250MSPS
DC997B-B	LTC2241-12	12	210MSPS
DC997B-C	LTC2240-12	12	170MSPS
DC997B-D	LTC2242-10	10	250MSPS
DC997B-E	LTC2241-10	10	210MSPS
DC997B-F	LTC2240-10	10	170MSPS

CUSTOMER NOTICE

LINEAR TECHNOLOGY HAS MADE A BEST EFFORT TO DESIGN A CIRCUIT THAT MEETS CUSTOMER-SUPPLIED SPECIFICATIONS; HOWEVER, IT REMAINS THE CUSTOMER'S RESPONSIBILITY TO VERIFY PROPER AND RELIABLE OPERATION IN THE ACTUAL APPLICATION. COMPONENT SUBSTITUTION AND PRINTED CIRCUIT BOARD LAYOUT MAY SIGNIFICANTLY AFFECT CIRCUIT PERFORMANCE OR RELIABILITY. CONTACT LINEAR TECHNOLOGY APPLICATIONS ENGINEERING FOR ASSISTANCE.

THIS CIRCUIT IS PROPRIETARY TO LINEAR TECHNOLOGY AND SUPPLIED FOR USE WITH LINEAR TECHNOLOGY PARTS.

CONTRACT NO. _____

APPROVALS

DRAWN _____

CHECKED _____

APPROVED _____

ENGINEER _____

DESIGNER _____

FILENAME: DC997B1

LINEAR TECHNOLOGY

1630 McCarthy Blvd.
Milpitas, CA 95035
Phone: (408) 432-1900
Fax: (408) 434-0507
LTC Confidential-For Customer Use Only

TITLE: SCHEMATIC
LTC2242 FAMILY LUDS BUS

SIZE B DWG NO. DEMO CIRCUIT 997 REV: B2

DATE: 8/29/2006 10:29:43a SHEET 1 OF 1