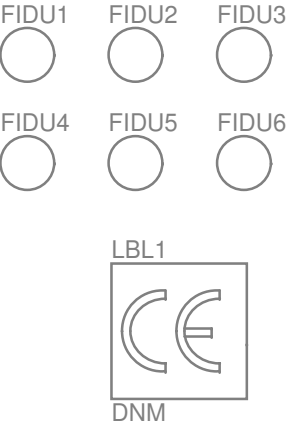

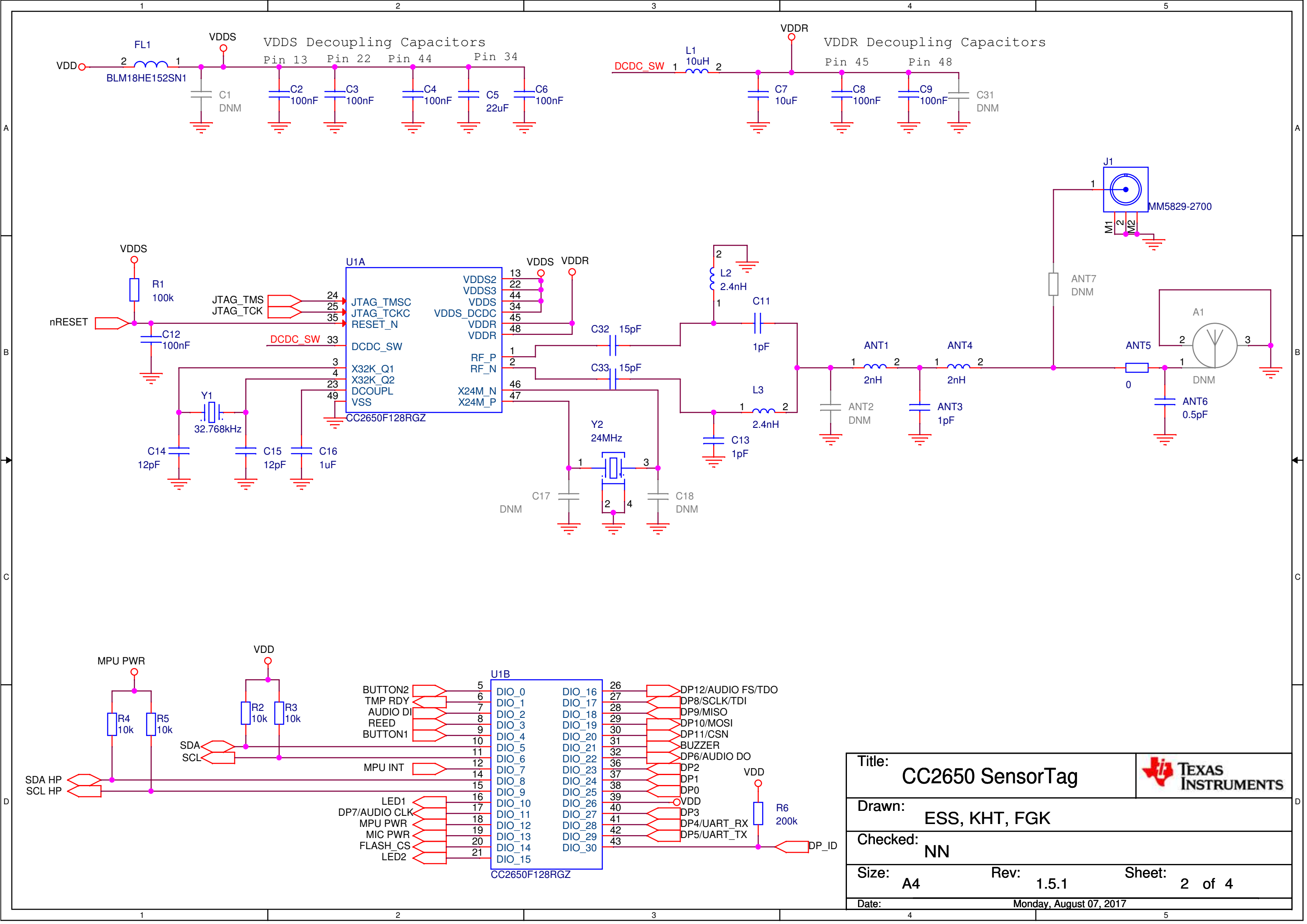


CC2650

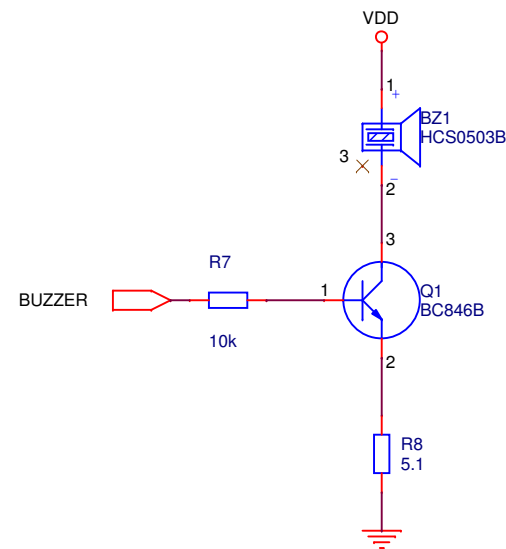


Title: CC2650 SensorTag		 TEXAS INSTRUMENTS	
Drawn: ESS, KHT, FGK			
Checked: NN			
Size: A4	Rev: 1.5.1	Sheet: 1 of 4	
Date: Monday, August 07, 2017			

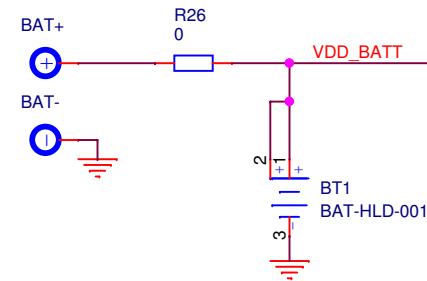


Title: CC2650 SensorTag			
Drawn: ESS, KHT, FGK			
Checked: NN			
Size: A4	Rev: 1.5.1	Sheet: 2	of 4
Date: Monday, August 07, 2017			

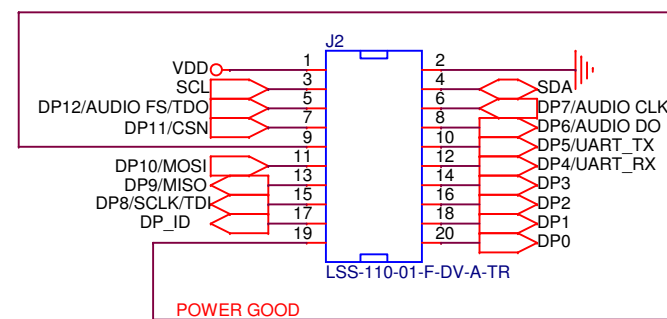
Buzzer



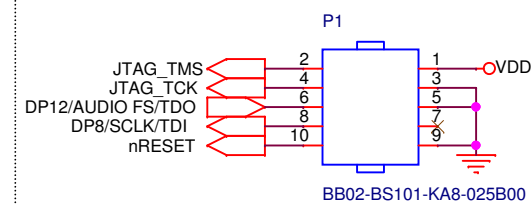
Battery interface



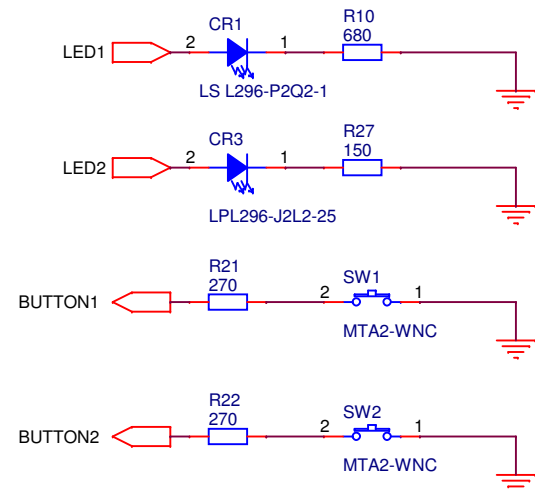
DevPack Connector



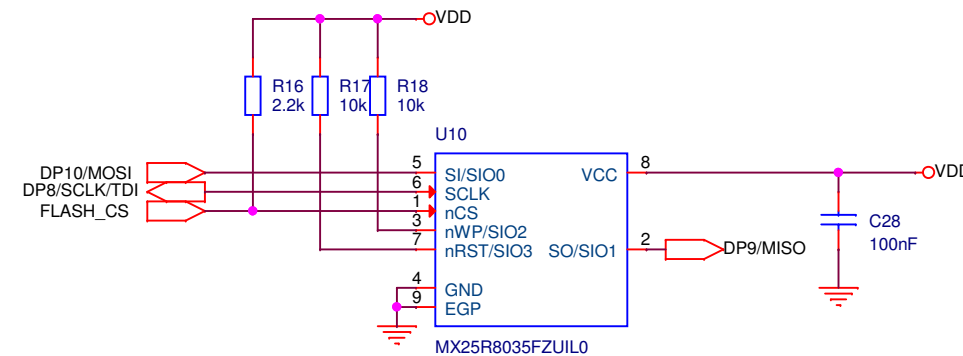
Debug / JTAG interface




LEDs and Buttons

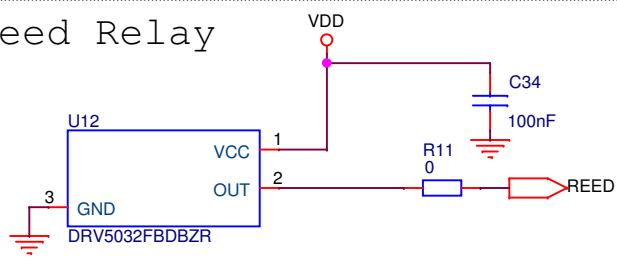


External storage

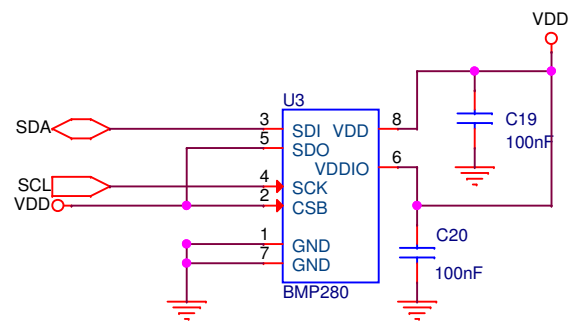


Title:	CC2650 SensorTag	 TEXAS INSTRUMENTS
Drawn:	ESS, KHT, FGK	
Checked:	NN	
Size:	A3	Rev: 1.5.1
Sheet:	3 of 4	
Date:	Monday, August 07, 2017	

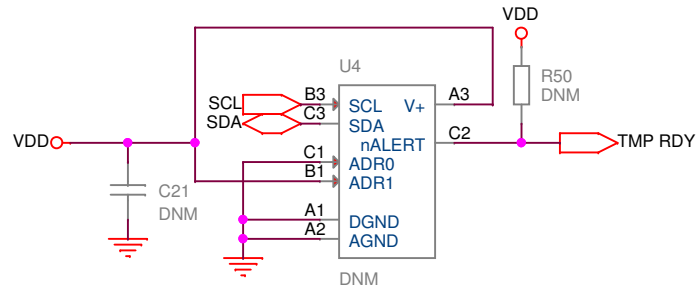
Reed Relay



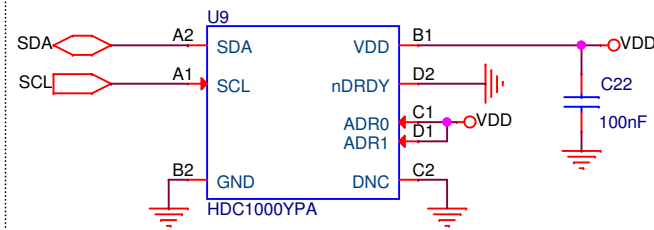
Pressure Sensor



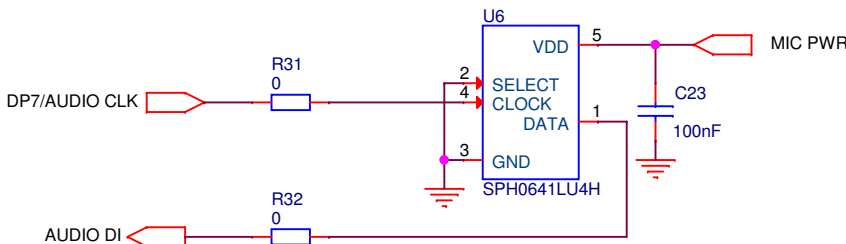
Removed



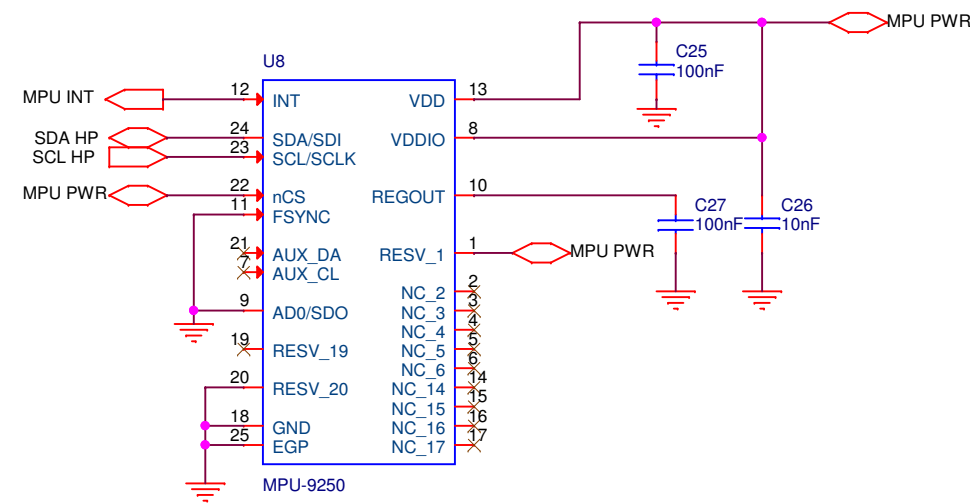
Humidity



Digital Microphone



Gyroscope and accelerometer



Light Sensor

