

QUICKSTART – CODE COMPOSER STUDIO™

Stellaris® Development and Evaluation Kits for Code Composer Studio™

Stellaris Development and Evaluation Kits provide a low-cost way to start designing with Stellaris microcontrollers using Texas Instruments' Code Composer Studio development tools. The evaluation boards can function as either a complete evaluation target or as a debugger interface to any external Stellaris device.

Requirements

- You have a PC with a USB interface, running Microsoft® Windows XP (SP2 or greater) or Vista
- You have the Stellaris Evaluation Kit Documentation and Software DVD or the standalone Code Composer Studio DVD found in the Development Kit



CAUTION: There is a known electrical issue with the FT2232 device that is used in the on-board In Circuit Debug Interface (ICDI). Some USB hubs can cause the device to misbehave, with symptoms ranging from failed enumeration to corrupt data transfers. If you experience trouble when using the on-board ICDI, try connecting the USB cable directly to one of the USB ports on your PC or laptop.

Code Composer Studio

This quickstart shows you how to install the Code Composer Studio development tool and how to use it to build and run an example application on your Stellaris Evaluation or Development Board.

Step 1: Install Code Composer Studio

1. Insert the Evaluation Kit Documentation and Software DVD or the standalone Code Composer Studio DVD into the DVD-ROM drive of your computer. If Autoplay is enabled on your PC, the index.htm file automatically opens in your default web browser. If Autoplay is not enabled, use Windows Explorer to open the DVD manually.
2. With the Evaluation Kit DVD, click the Tools button and then click the Code Composer Studio logo to start the setup program.

NOTE: The CCS installer executable relies on additional installer executables on the DVD. Your web browser must support running files without first saving them to your hard drive to successfully run the CCS installer by clicking the CCS logo. If your web browser does not support this feature, you will need to use Windows Explorer to browse to and run the CCS installer (setup_CCS_n.n.n.nnnnn.exe) from the \Tools\CCS\ directory on the DVD.

With the standalone DVD, follow the installer dialog.

QUICKSTART – CODE COMPOSER STUDIO™

3. Follow the instructions in the Code Composer Studio installation program. Select to install the Platinum Edition or the Microcontroller Edition with the Stellaris Cortex-M3 MCUs ISA selected at a minimum.

Step 2: Install the StellarisWare® Package

A full set of C-based peripheral drivers is provided, covering all peripherals and functionality of the Stellaris devices. The StellarisWare package includes various example applications with project files for all major tool vendors that support Stellaris, including Code Composer Studio. To install StellarisWare components, follow these steps:

1. Navigate to the *Tools* tab on the Evaluation Kit Documentation and Software DVD or Development Kit Documentation and Software DVD.

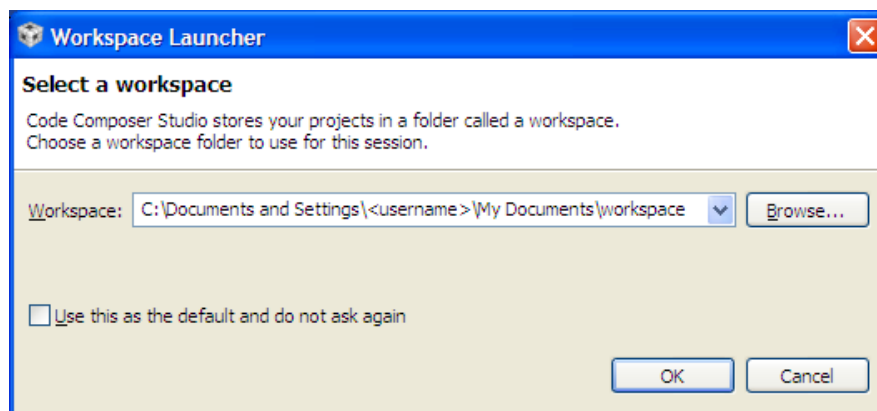
NOTE: If you are navigating the DVD using Windows Explorer (or a similar application), go to the *Tools/StellarisWare/* directory.

2. Click on the ‘Install’ link next in the StellarisWare section of the DVD and run the StellarisWare installer. If you prefer to manually install StellarisWare, the installer is a self-extracting zip file that is located in the *Tools/StellarisWare* directory. You can use a zip file extraction utility such as WinZip to manually extract the contents.
3. To view the StellarisWare documentation, navigate to the installation directory and click on the *Stellaris Peripheral Driver Library User’s Guide* PDF.

NOTE: For the most recent version of the StellarisWare, check the www.ti.com/stellaris web site for the latest software updates.

Step 3: Start Code Composer Studio and Open a Workspace

1. Start the Code Composer Studio IDE by selecting it from the Windows Start menu or double-clicking the icon installed on your desktop. When the IDE loads, it asks you where to open the workspace folder:



2. The Workspace launcher defaults to the following path:



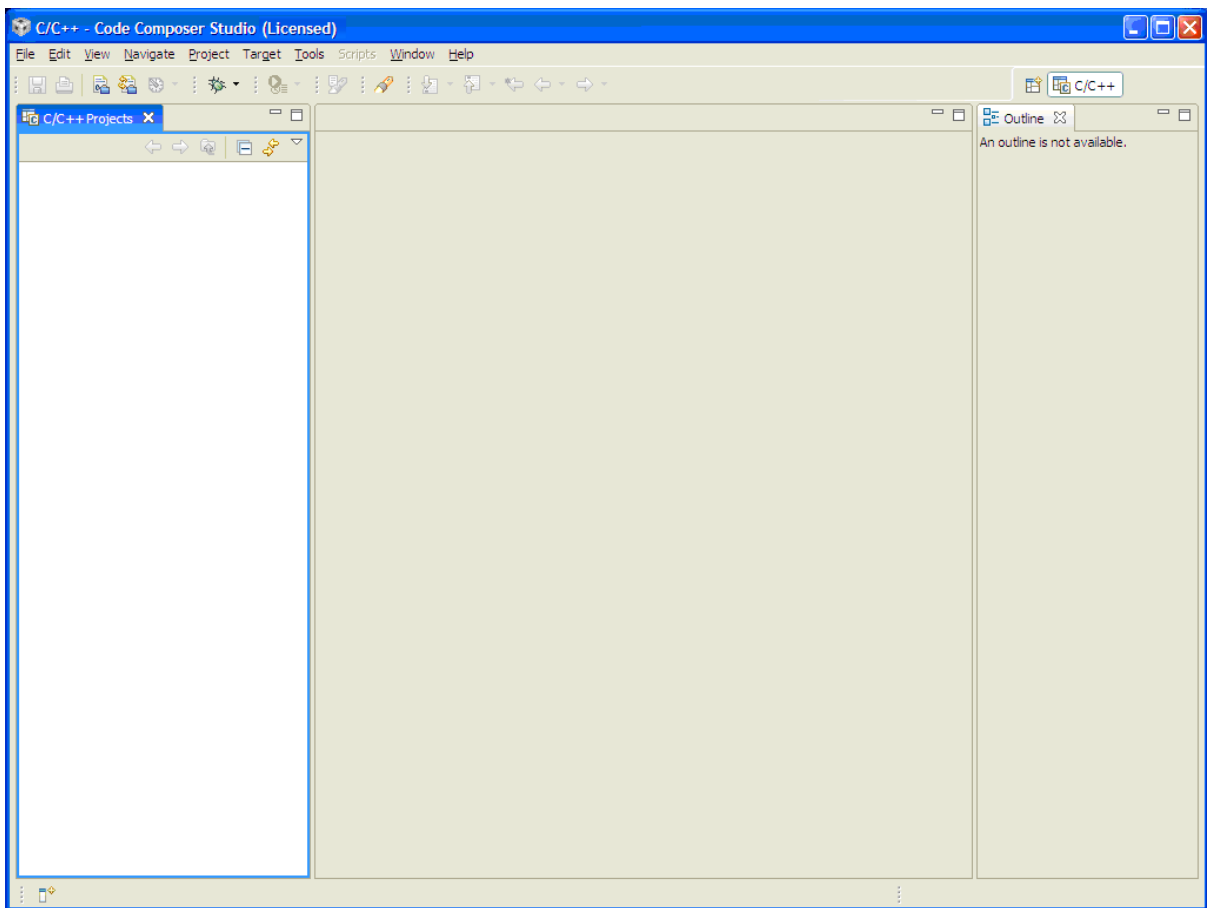
QUICKSTART – CODE COMPOSER STUDIO™

C:\Documents and Settings\\My Documents\workspace

Click OK to use this default workspace location.

Note: If you installed the Code Composer Studio IDE from the DVD, the license was automatically installed. If you downloaded the Code Composer Studio IDE, you may have to go through an extra licensing step.

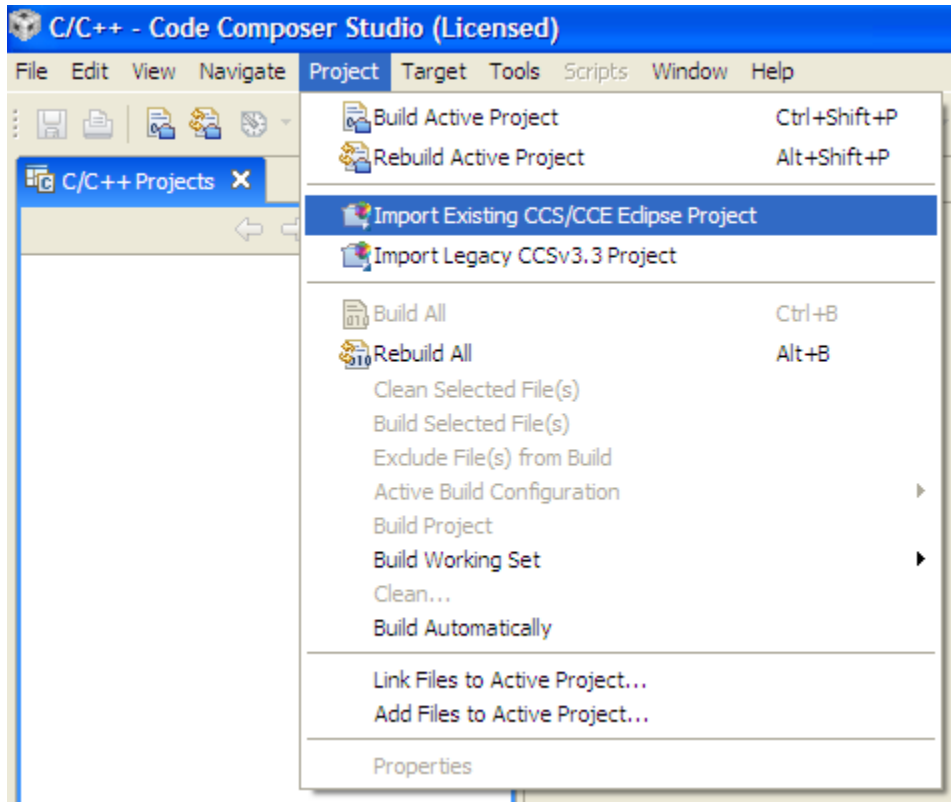
3. The Code Composer Studio IDE may now open with the welcome page. If so, close out the welcome page by clicking the 'X' on the tab. You should now have an empty workspace.



Step 4: Import Libraries

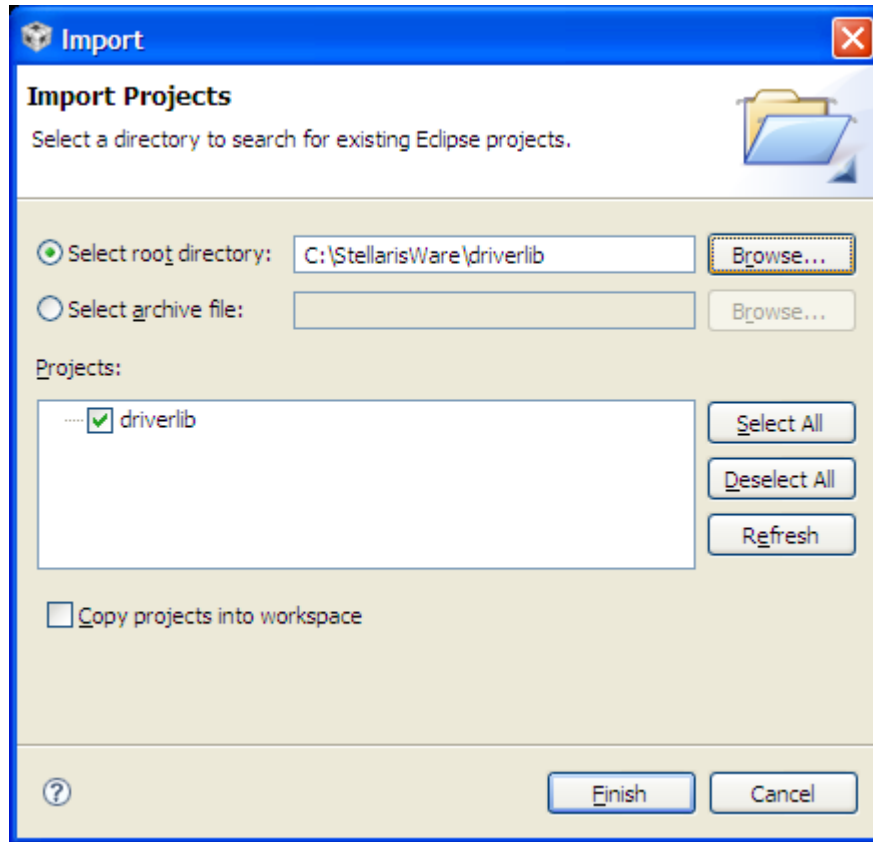
1. Select the "Import Existing CCS/CCE Eclipse Project" option from the Project menu in the IDE.

QUICKSTART – CODE COMPOSER STUDIO™



2. The “Import” dialog box appears. Browse to the root directory of driver library (StellarisWare\driverlib). Be sure that “driverlib” is selected in the listed projects and click “Finish.”

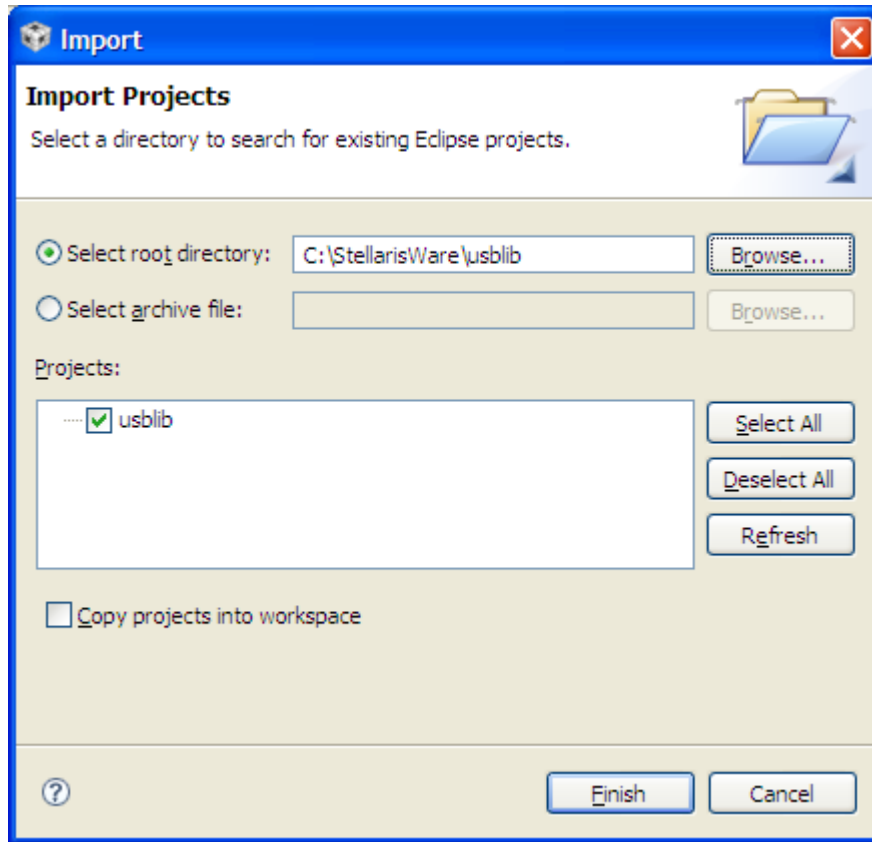
QUICKSTART – CODE COMPOSER STUDIO™



IMPORTANT: If you have installed the StellarisWare Firmware Development package for a board that does not use the USB library or Graphics library, the following steps do not apply. If the directories mentioned below do not exist in your StellarisWare installation, then cancel out of the import projects dialog.

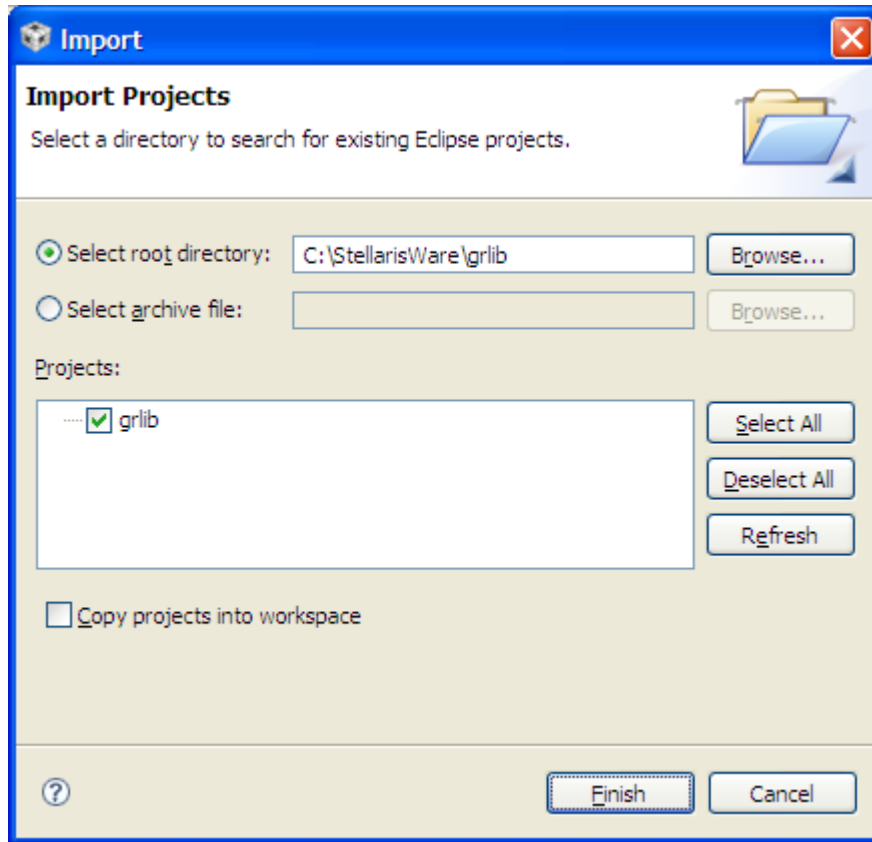
3. Select the “Import Existing CCS/CCE Eclipse Project” option from the Project menu in the IDE again. Browse to the root directory of USB library (StellarisWare\usbllib). Be sure that “usbllib” is selected in the projects list and click “Finish.”

QUICKSTART – CODE COMPOSER STUDIO™



4. Select the “Import Existing CCS/CCE Eclipse Project” option from the Project menu in the IDE again. Browse to the root directory of the graphics library (StellarisWare\grlib). Be sure that “grlib” is selected in the projects list and click “Finish.”

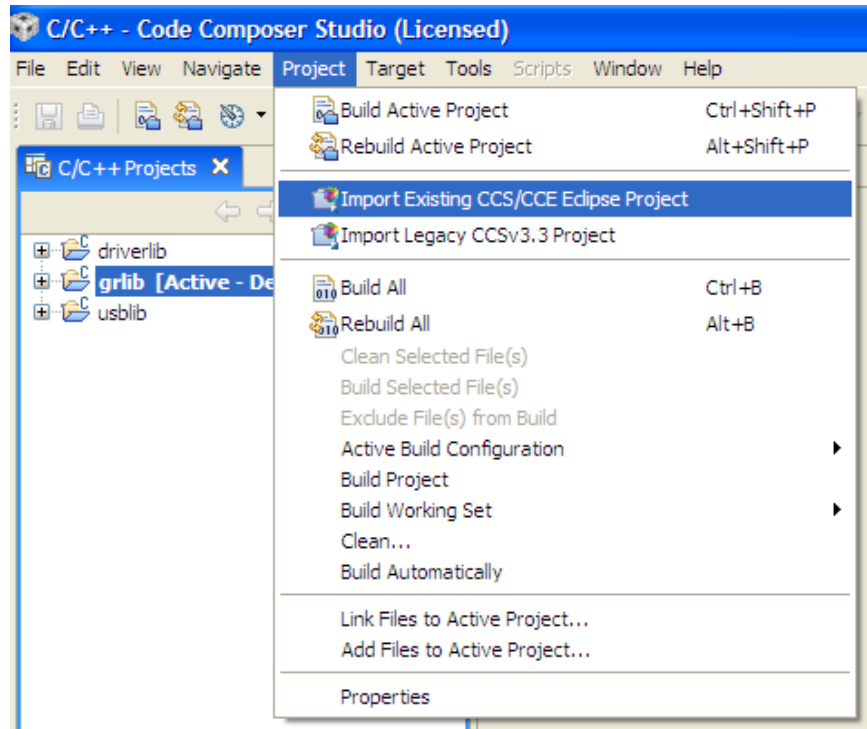
QUICKSTART – CODE COMPOSER STUDIO™



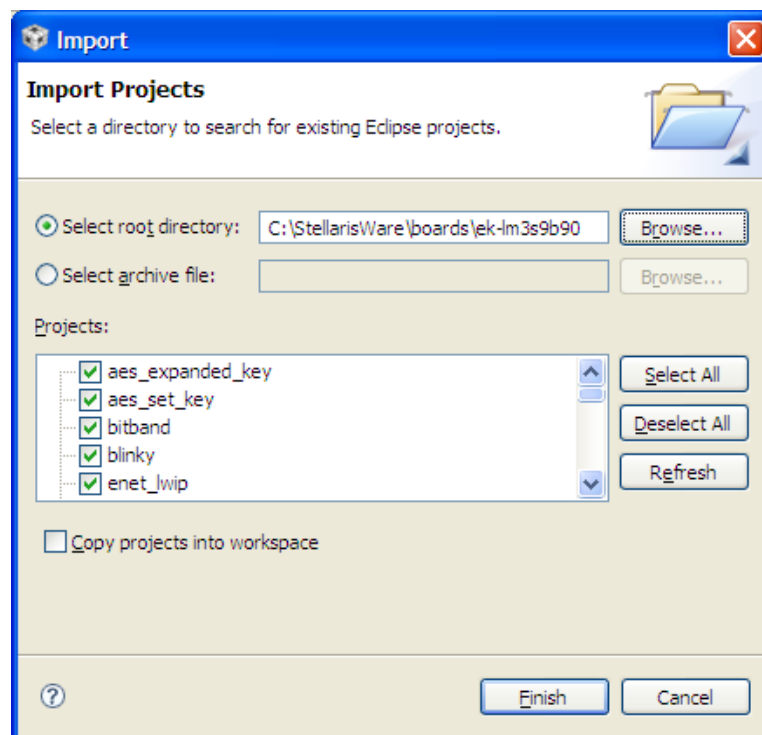
Step 5: Import Board Examples

1. Select the “Import Existing CCS/CCE Eclipse Project” option from the Project menu in the IDE.

QUICKSTART – CODE COMPOSER STUDIO™

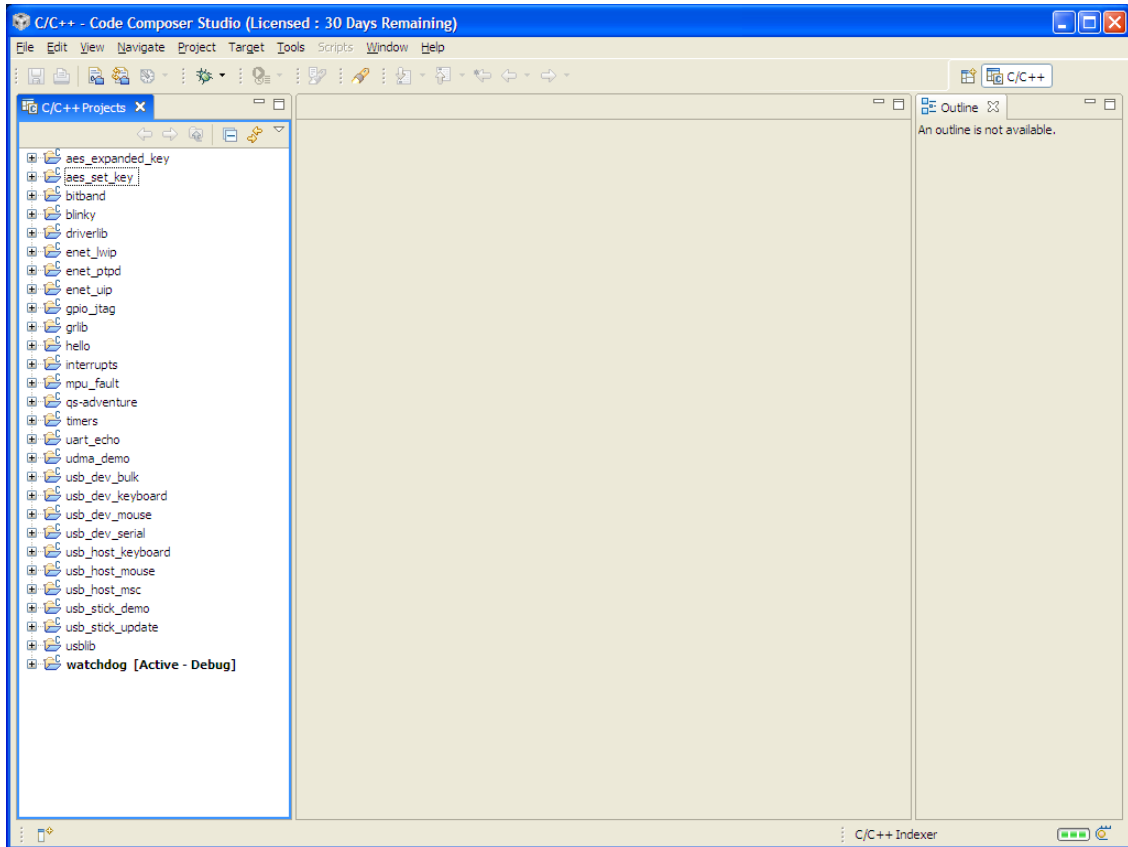


2. The “Import” dialog box appears. Browse to the root directory for your chosen board. The example screen shot below has the EK-LM3S9B90 board as the chosen board. (StellarisWare\boards\ek-lm3s9b90). Be sure that the examples are selected in the listed projects and click “Finish.”



QUICKSTART – CODE COMPOSER STUDIO™

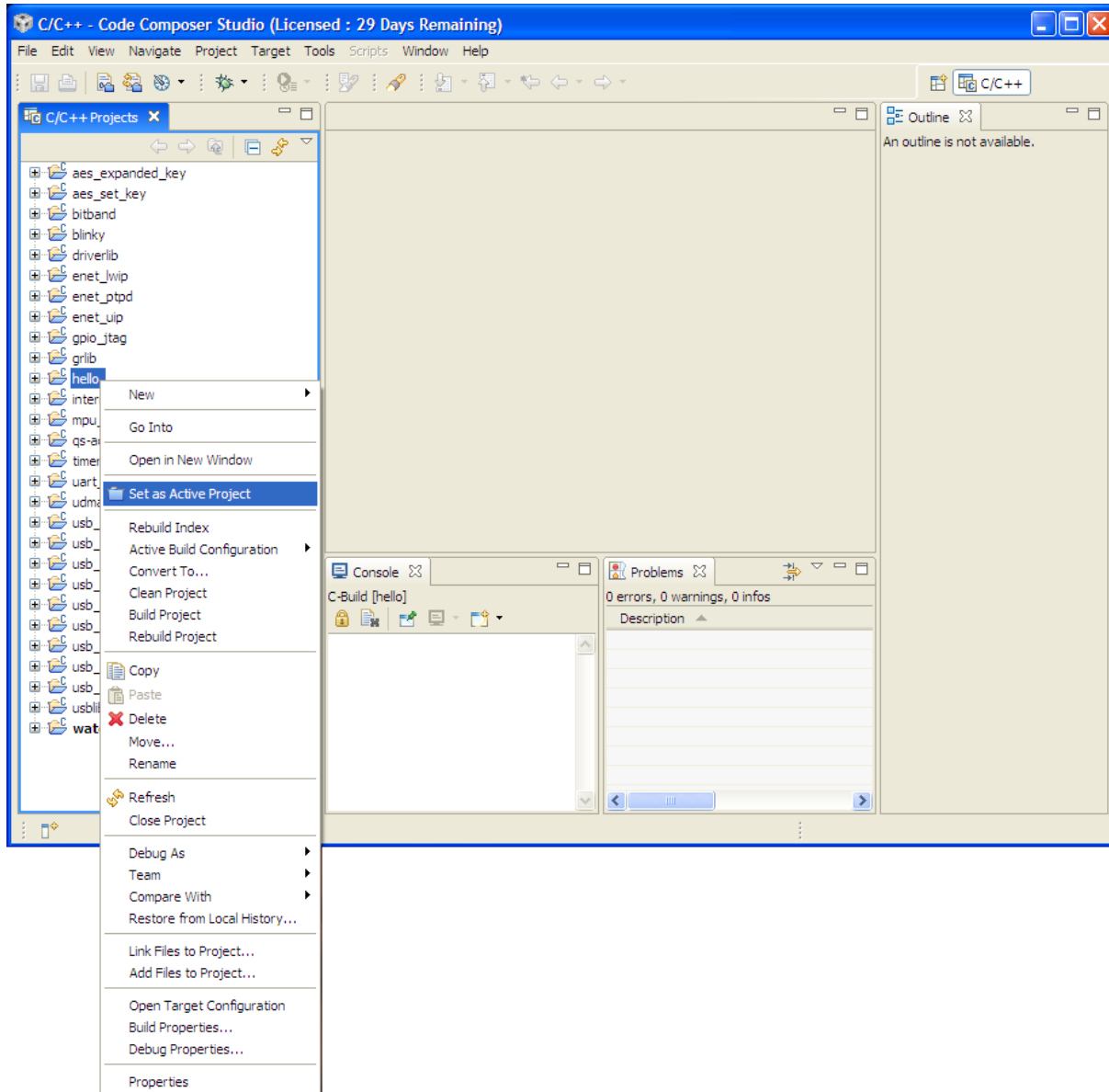
3. All of the projects now show in the Projects Explorer Window.



QUICKSTART – CODE COMPOSER STUDIO™

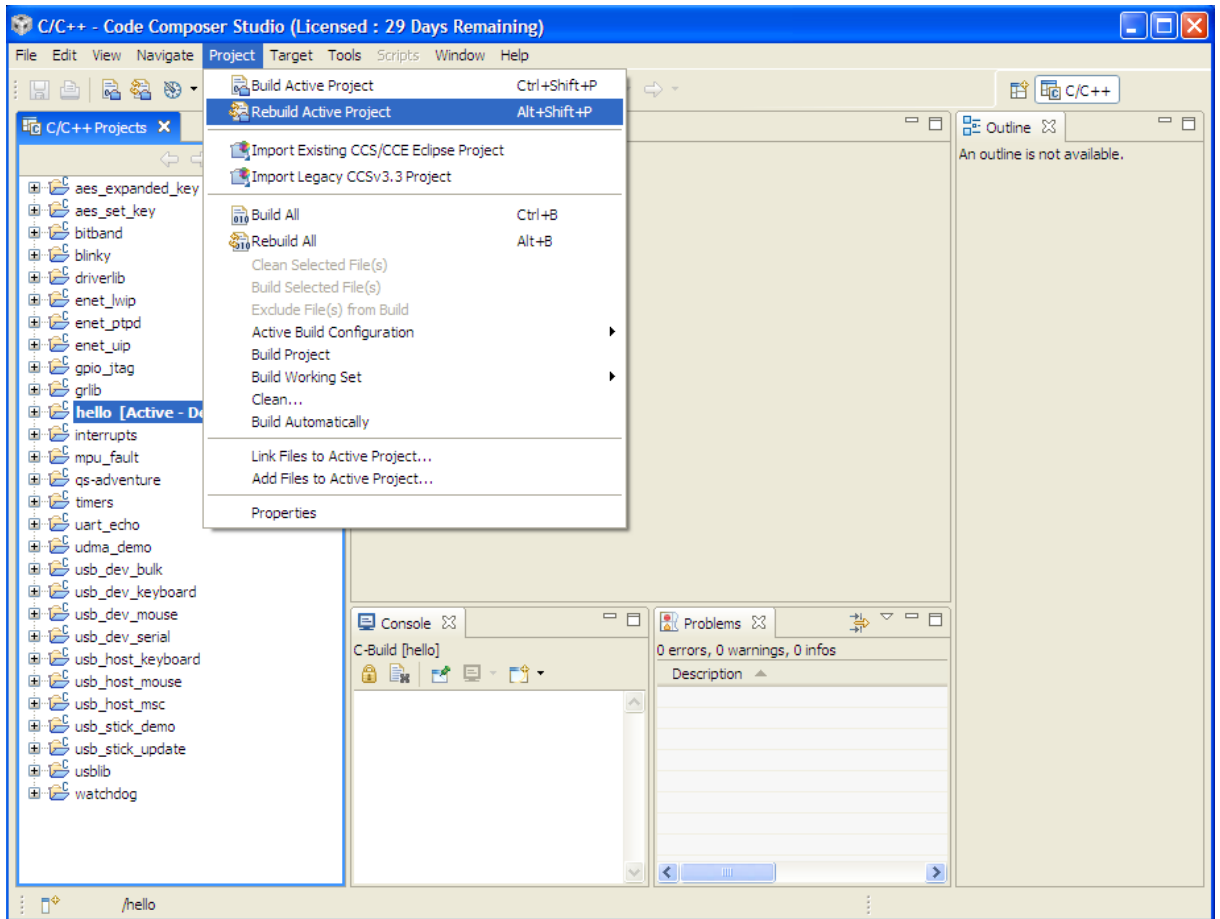
Step 6: Building and Debugging a Project

1. Right click on the hello project and select “Set as Active Project.”



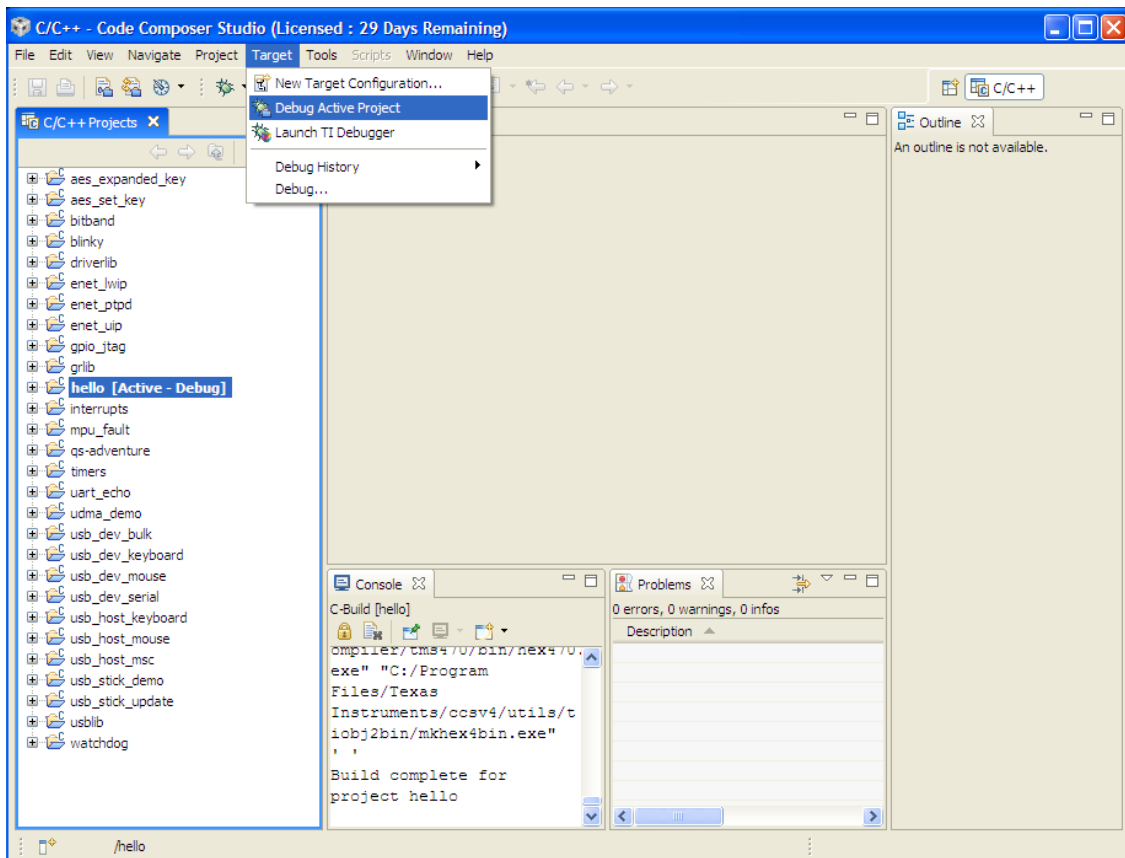
2. Click on the Project pull-down menu and select “Rebuild Active Project.” The build may take a few moments. As the project builds, messages scroll by in the console window. When the build is complete, the words “Build complete for project hello” appear in the console window.

QUICKSTART – CODE COMPOSER STUDIO™



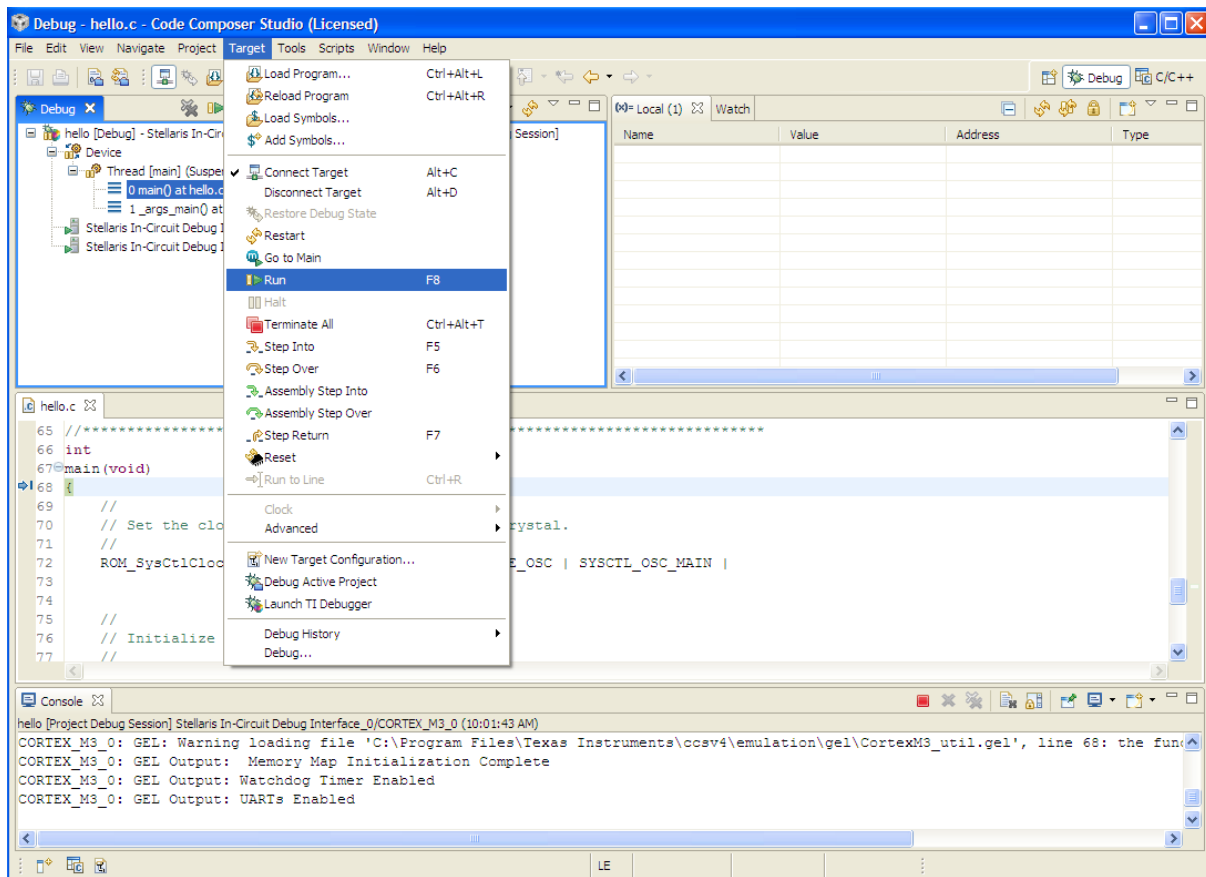
3. Click on the Target pull-down menu and select “Debug Active Project.” Alternatively, you can simply click the “Debug Launch” icon on the toolbar.

QUICKSTART – CODE COMPOSER STUDIO™



4. The Code Composer Studio debugger automatically connects to your evaluation board, programs the Flash memory, and runs to the beginning of the `main()` function. From here, you can examine and modify memory, program variables and processor registers, set breakpoints, step, and perform other typical debugging activities. To run the program, select “Run” from the Target pull-down menu.

QUICKSTART – CODE COMPOSER STUDIO™



Step 7: Build and Run Additional Example Programs

There are several additional example projects listed in the workspace. If you would like to build another example project, follow the above instructions. The quickstart application that came preloaded on the evaluation board is the qs-xxxxx project listed with the examples.

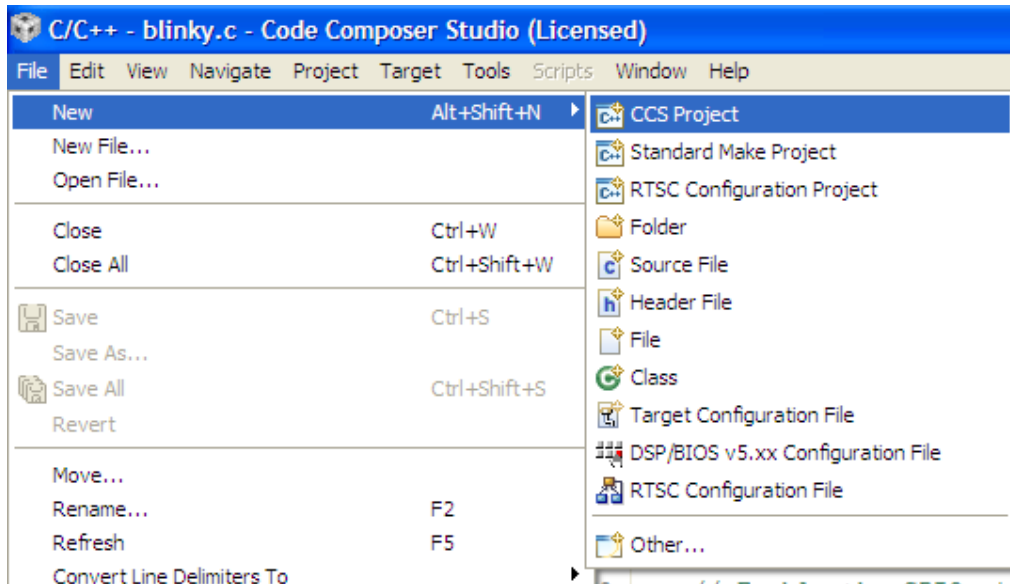
Creating a New Project

Once you have gone through the StellarisWare example applications, you may want to create your own project to start development. While you can always start with an existing, simple project, sometimes you may want to start fresh.

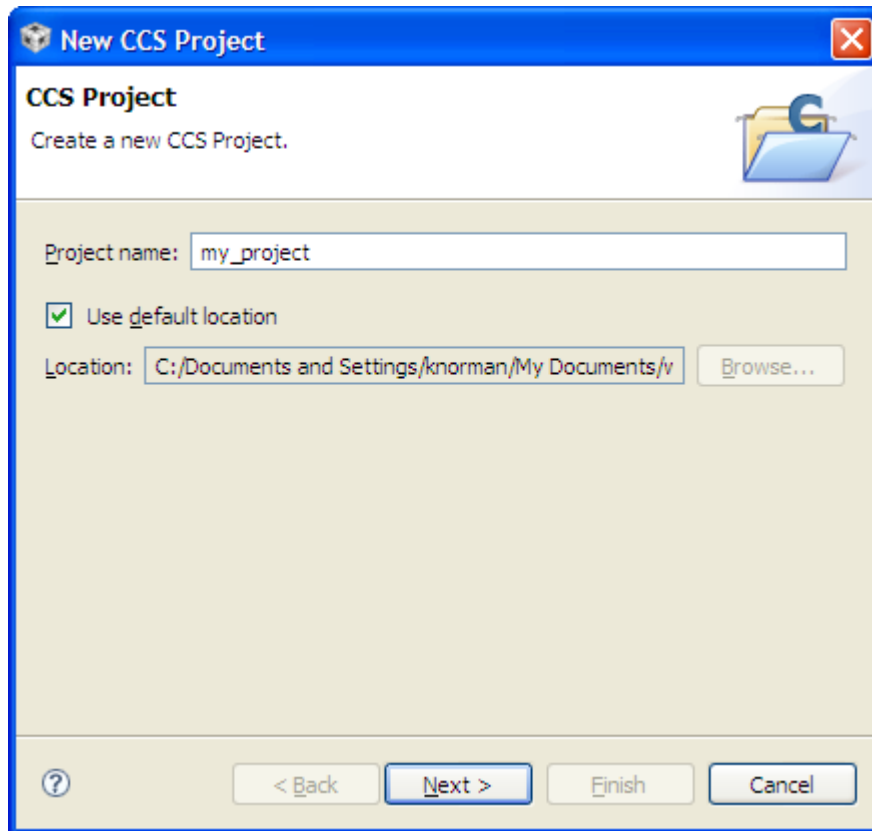
The example provided below creates a fresh project, copies code from an existing project, and builds the new project.

1. To add a new project to your workspace, go to File > New > CCS Project.

QUICKSTART – CODE COMPOSER STUDIO™

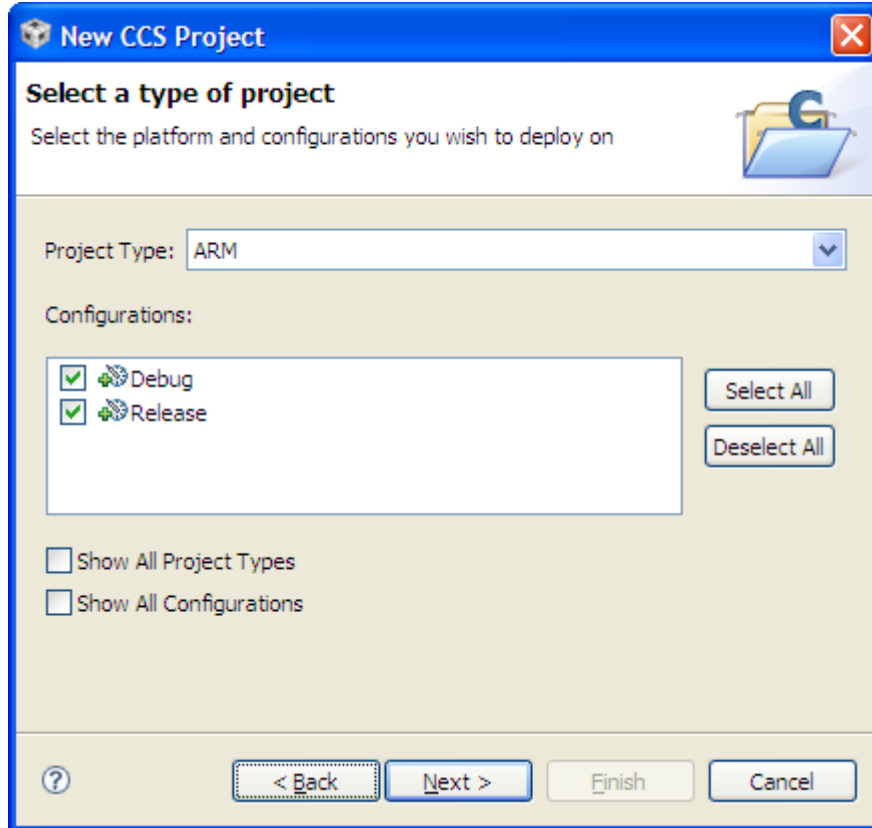


2. Code Composer Studio prompts you with a dialog box asking you to name the project and specify the location of the project. Name your project, specify the location, and click “Next.”



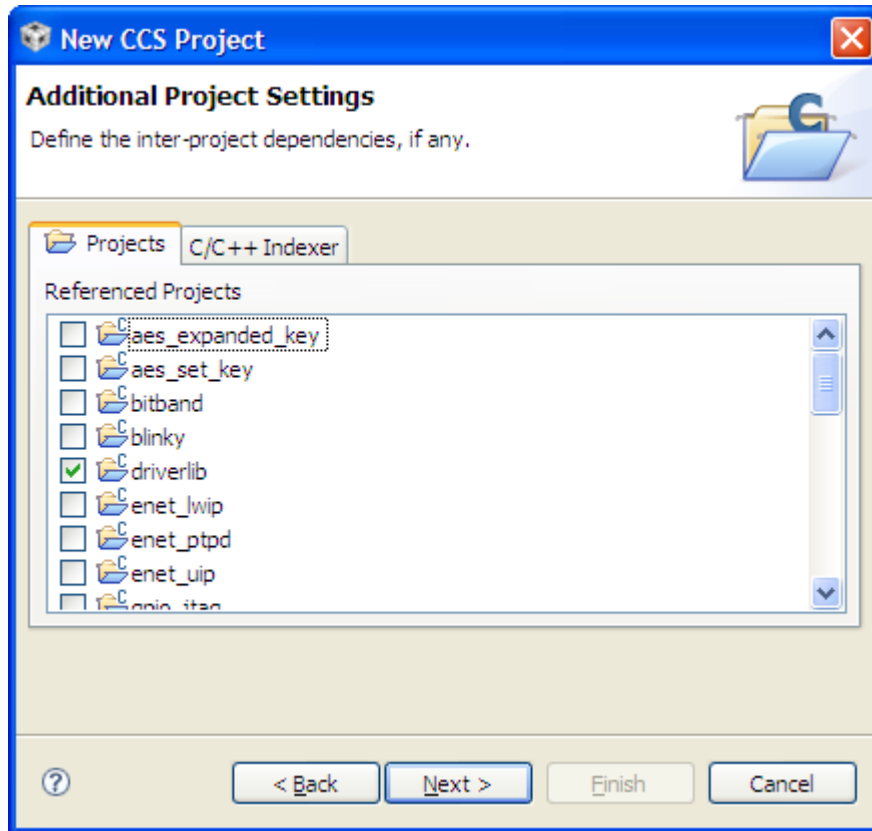
QUICKSTART – CODE COMPOSER STUDIO™

3. The next dialog box asks for the project type and configurations. Select “ARM” as the project type, check both the “Debug” and “Release” configurations, and click “Next.”



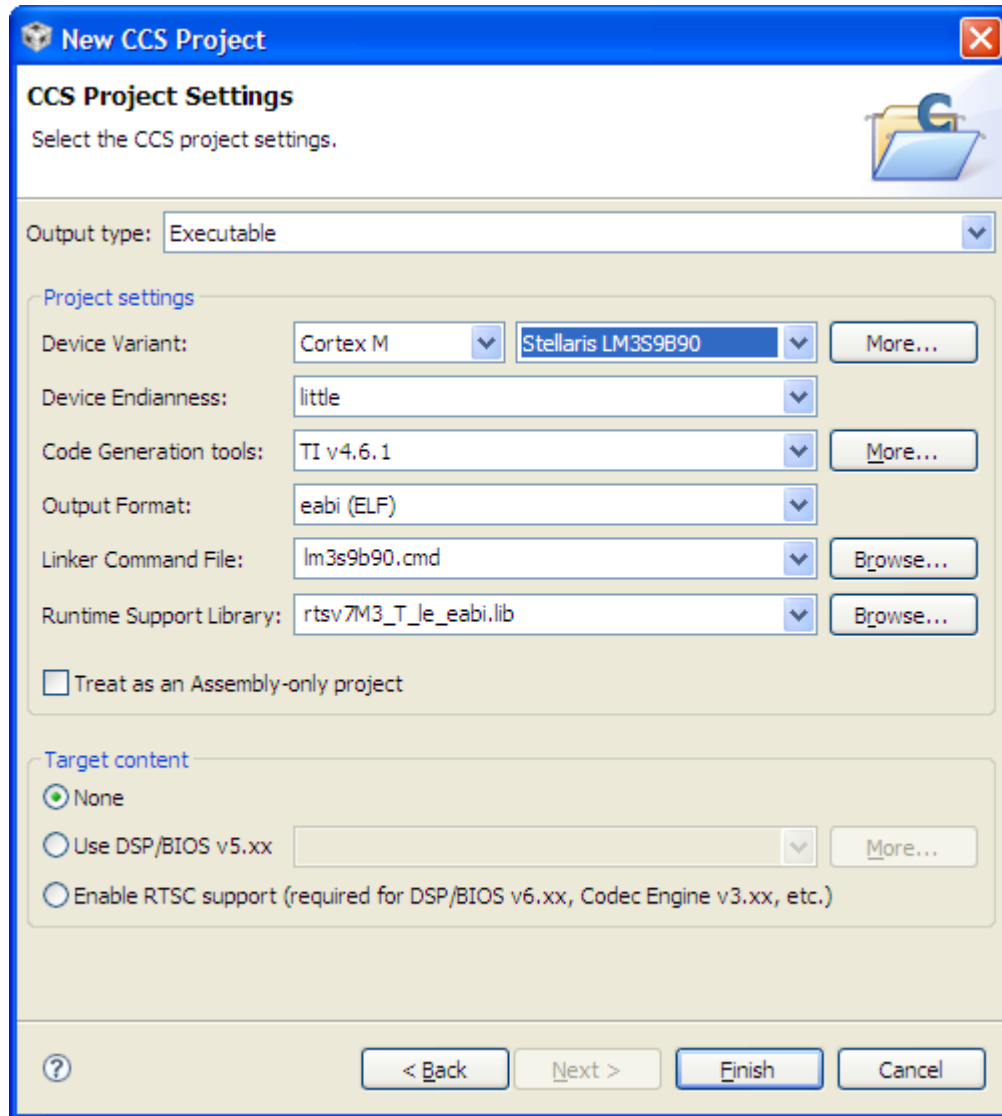
4. The next dialog box allows you to define any inter-project dependencies. If your project will be using driverlib, usblib, or grlib, now is a good time to define that dependency.

QUICKSTART – CODE COMPOSER STUDIO™



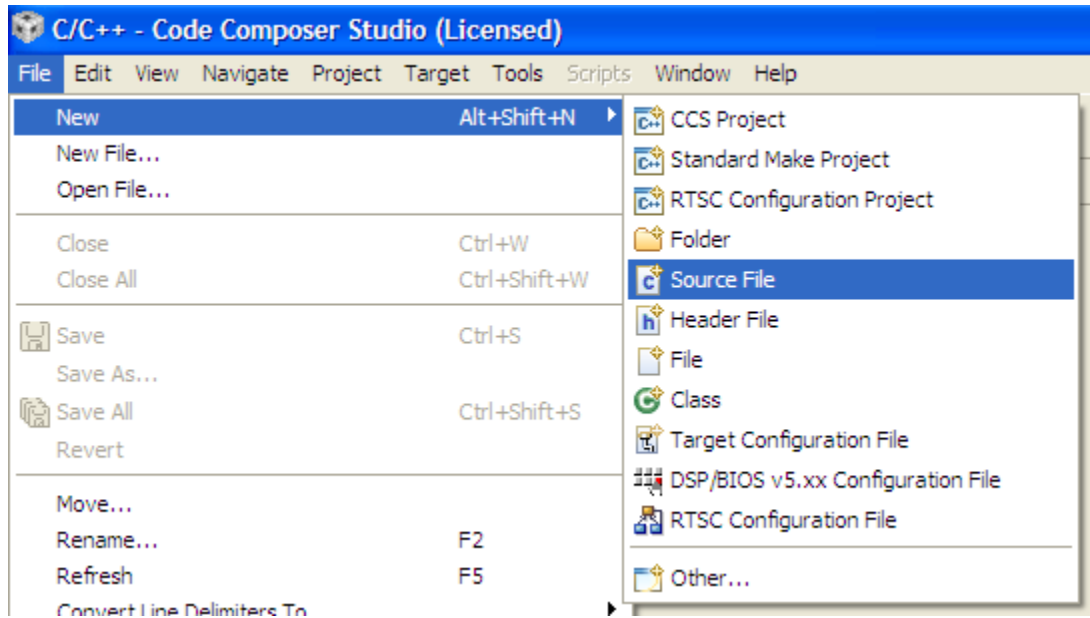
5. On the next dialog, select the appropriate Stellaris device, little endian, the TI code generation tool, ELF output format, and the `rtsv7M3_T_le_eabi.lib` runtime library. Click “Finish.”

QUICKSTART – CODE COMPOSER STUDIO™

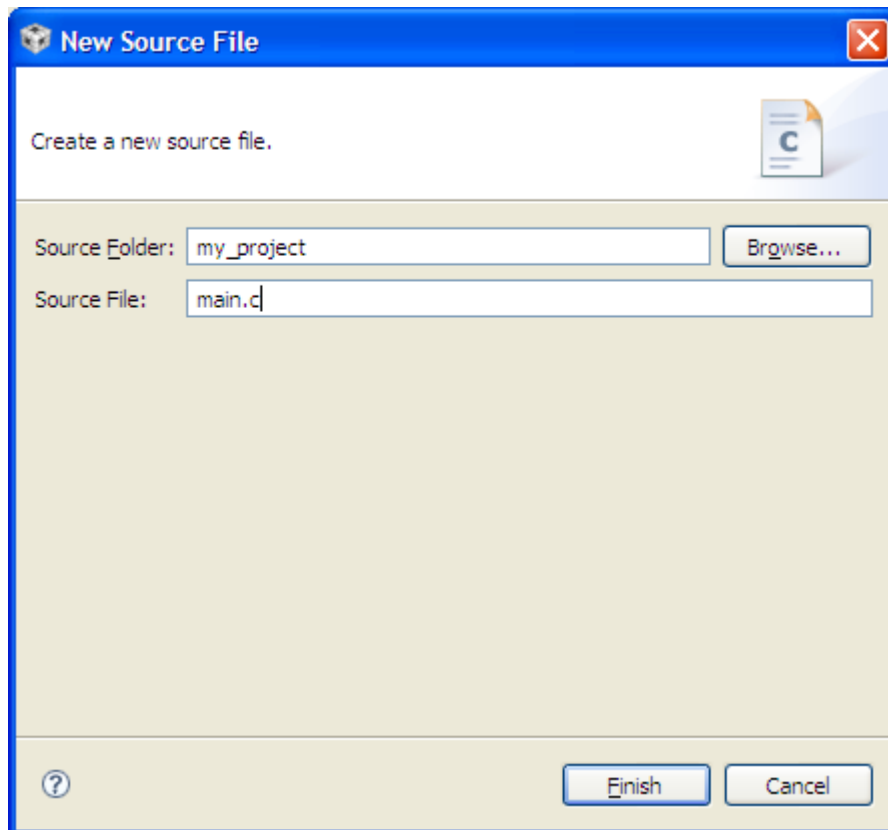


6. A new project has now been created, but the project does not include any source code. The next step is to add some startup code to the project. Copy the startup_ccs.c file from an existing example directory in StellarisWare (such as \StellarisWare\boards\\blinky) to your new project directory created in step 2 above.
7. Create a new C source file by going to File > New > Source File.

QUICKSTART – CODE COMPOSER STUDIO™

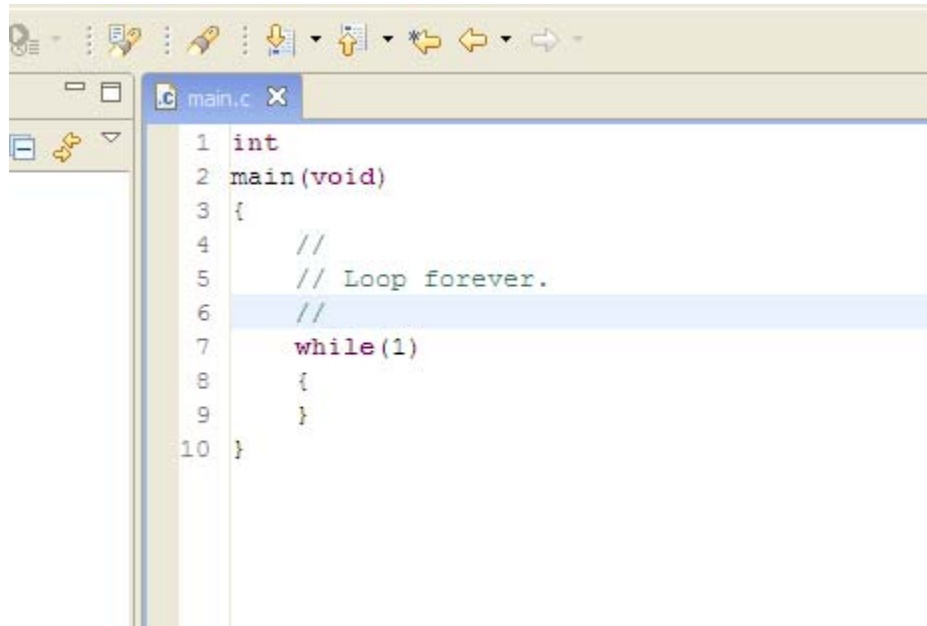


8. In the dialog box that pops up, name the file main.c and click “Finish.”



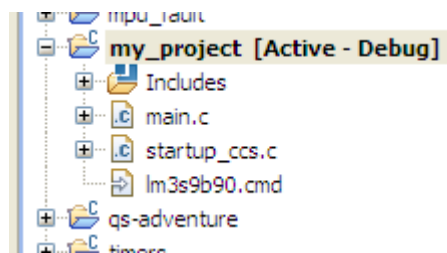
QUICKSTART – CODE COMPOSER STUDIO™

9. Add a main() function to main.c. Save the file. See the screenshot below.



```
1 int
2 main(void)
3 {
4     //
5     // Loop forever.
6     //
7     while(1)
8     {
9     }
10 }
```

10. Both files, main.c and startup_ccs.c, should have automatically been added to the project. If not, right-click the project, select “Add Files to Project” and browse to the files.

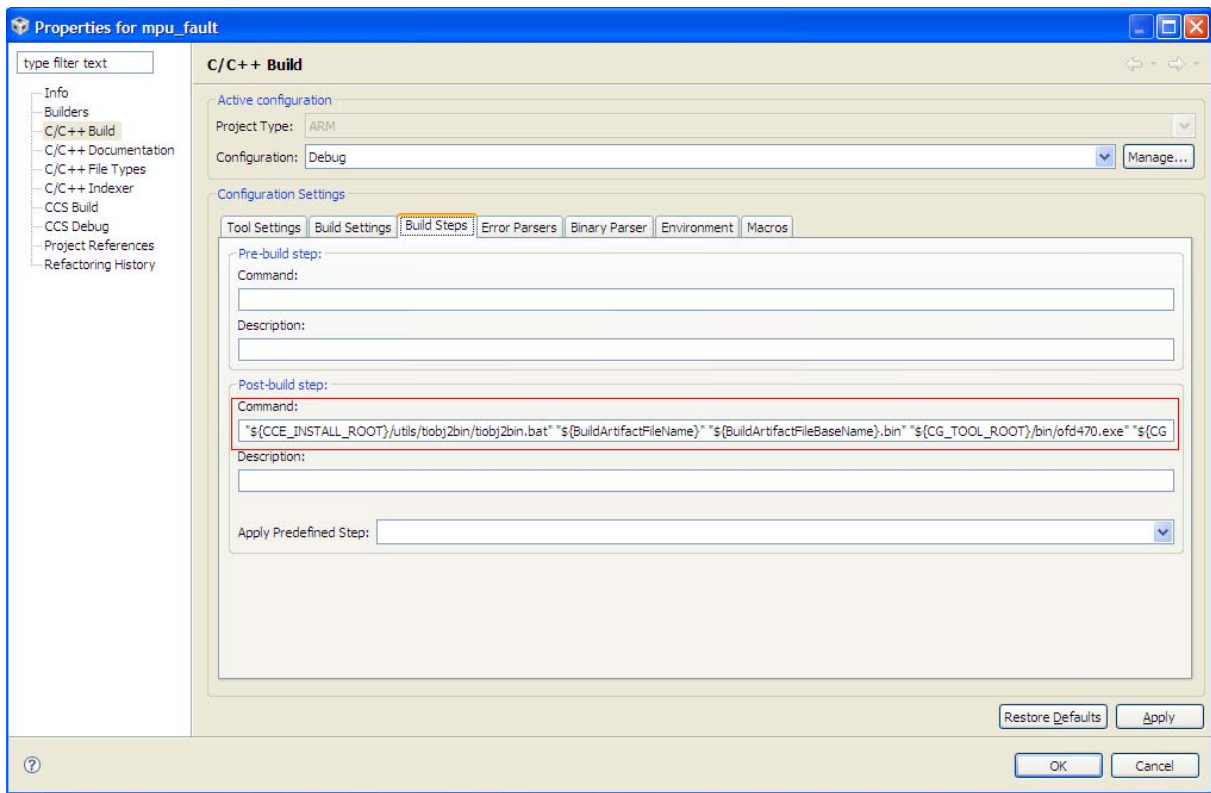


11. Build the new project by selecting Project > Rebuild Active Project.

With your project created, all you really need to do is add your own code. Use the existing StellarisWare board examples as a reference.

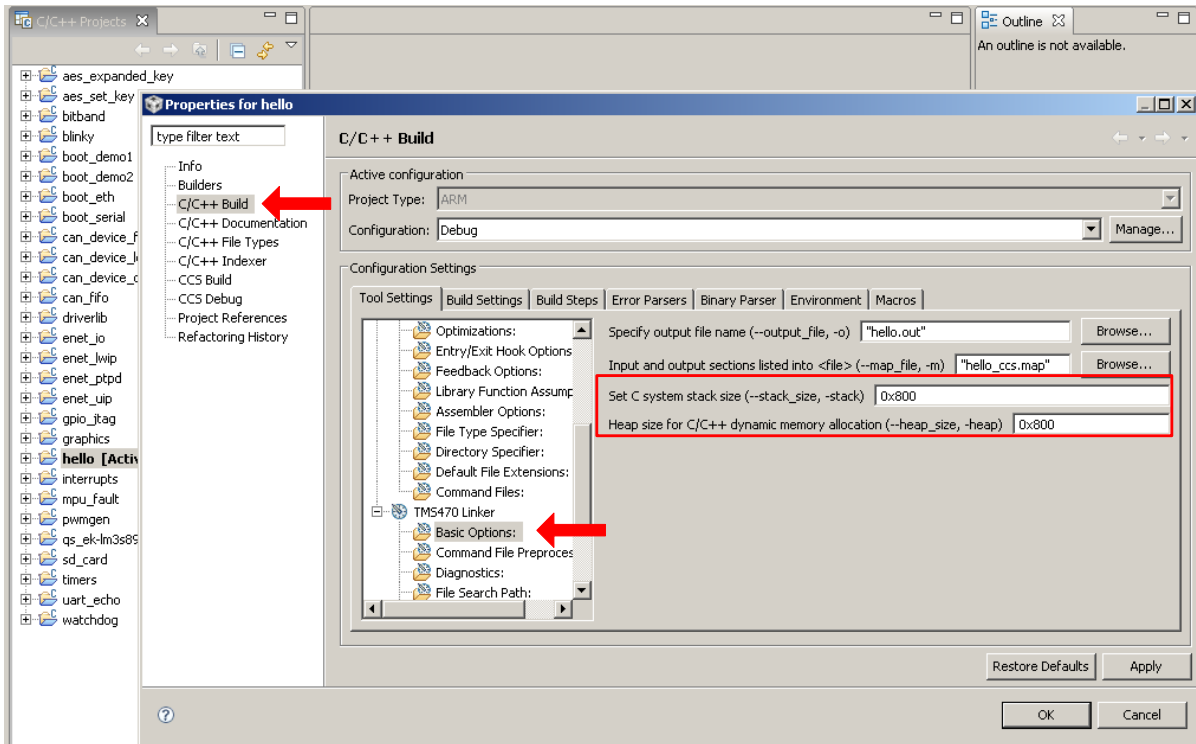
NOTE: To set up your project to output a binary file (.bin) to be used with tools such as LM Flash Programmer, copy the post-build step from an existing StellarisWare example project. See the following screenshot.

QUICKSTART – CODE COMPOSER STUDIO™



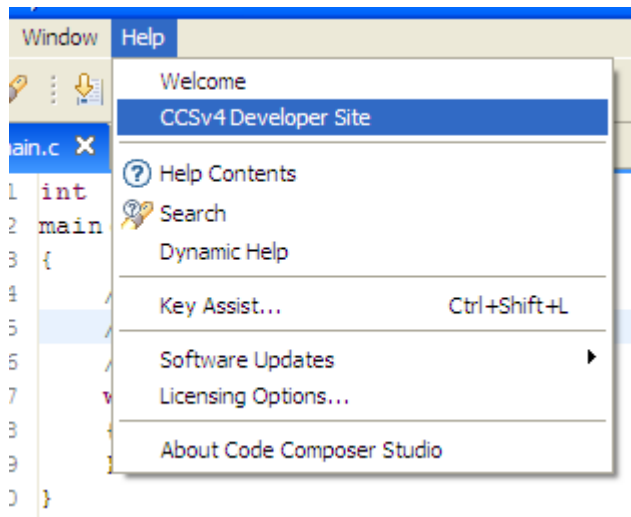
NOTE: If you use standard C I/O functions such as `printf` or `fread`, you must increase the stack and heap allocations for your project. Right-click on your project and then select Properties to open a dialog containing the project options. Select C/C++ Build in the pane on the left side of the dialog box. This displays the build options. Under the Linker node in the Tool Settings tab, select Basic Options from the scroll list. Enter 0x800 for both the system stack and the heap. See the following screenshot.

QUICKSTART – CODE COMPOSER STUDIO™



Conclusion

You have now installed the Code Composer Studio development tools and used them to build and load an example application on your Stellaris Evaluation Board. From here, you can experiment with the debugger or start creating your own application using the example projects as a reference. For further information on Code Composer Studio, go to the CCS Developer Site.



QUICKSTART – CODE COMPOSER STUDIO™

References

The following references are included on the Stellaris Evaluation Kit Documentation and Software DVD and are also available for download at www.ti.com/stellaris:

- *Stellaris Evaluation Kit User's Manual*
- *StellarisWare Software*, Order Number SW-LM3S
- *StellarisWare Peripheral Driver Library User's Guide*, Order Number SW-DRL-UG

In addition, the following website may be useful:

- Code Composer Studio website at <http://www.ti.com/ccstudio>

Copyright © 2009–2010 Texas Instruments, Inc. All rights reserved. Stellaris and StellarisWare are registered trademarks of Texas Instruments. ARM and Thumb are registered trademarks, and Cortex is a trademark of ARM Limited. Other names and brands may be claimed as the property of others.

Texas Instruments
108 Wild Basin Rd., Suite 350
Austin, TX 78746
<http://www.ti.com/stellaris>



IMPORTANT NOTICE

Texas Instruments Incorporated and its subsidiaries (TI) reserve the right to make corrections, modifications, enhancements, improvements, and other changes to its products and services at any time and to discontinue any product or service without notice. Customers should obtain the latest relevant information before placing orders and should verify that such information is current and complete. All products are sold subject to TI's terms and conditions of sale supplied at the time of order acknowledgment.

TI warrants performance of its hardware products to the specifications applicable at the time of sale in accordance with TI's standard warranty. Testing and other quality control techniques are used to the extent TI deems necessary to support this warranty. Except where mandated by government requirements, testing of all parameters of each product is not necessarily performed.

TI assumes no liability for applications assistance or customer product design. Customers are responsible for their products and applications using TI components. To minimize the risks associated with customer products and applications, customers should provide adequate design and operating safeguards.

TI does not warrant or represent that any license, either express or implied, is granted under any TI patent right, copyright, mask work right, or other TI intellectual property right relating to any combination, machine, or process in which TI products or services are used. Information published by TI regarding third-party products or services does not constitute a license from TI to use such products or services or a warranty or endorsement thereof. Use of such information may require a license from a third party under the patents or other intellectual property of the third party, or a license from TI under the patents or other intellectual property of TI.

Reproduction of TI information in TI data books or data sheets is permissible only if reproduction is without alteration and is accompanied by all associated warranties, conditions, limitations, and notices. Reproduction of this information with alteration is an unfair and deceptive business practice. TI is not responsible or liable for such altered documentation. Information of third parties may be subject to additional restrictions.

Resale of TI products or services with statements different from or beyond the parameters stated by TI for that product or service voids all express and any implied warranties for the associated TI product or service and is an unfair and deceptive business practice. TI is not responsible or liable for any such statements.

TI products are not authorized for use in safety-critical applications (such as life support) where a failure of the TI product would reasonably be expected to cause severe personal injury or death, unless officers of the parties have executed an agreement specifically governing such use. Buyers represent that they have all necessary expertise in the safety and regulatory ramifications of their applications, and acknowledge and agree that they are solely responsible for all legal, regulatory and safety-related requirements concerning their products and any use of TI products in such safety-critical applications, notwithstanding any applications-related information or support that may be provided by TI. Further, Buyers must fully indemnify TI and its representatives against any damages arising out of the use of TI products in such safety-critical applications.

TI products are neither designed nor intended for use in military/aerospace applications or environments unless the TI products are specifically designated by TI as military-grade or "enhanced plastic." Only products designated by TI as military-grade meet military specifications. Buyers acknowledge and agree that any such use of TI products which TI has not designated as military-grade is solely at the Buyer's risk, and that they are solely responsible for compliance with all legal and regulatory requirements in connection with such use.

TI products are neither designed nor intended for use in automotive applications or environments unless the specific TI products are designated by TI as compliant with ISO/TS 16949 requirements. Buyers acknowledge and agree that, if they use any non-designated products in automotive applications, TI will not be responsible for any failure to meet such requirements.

Following are URLs where you can obtain information on other Texas Instruments products and application solutions:

Products		Applications	
Amplifiers	amplifier.ti.com	Audio	www.ti.com/audio
Data Converters	dataconverter.ti.com	Automotive	www.ti.com/automotive
DLP® Products	www.dlp.com	Communications and Telecom	www.ti.com/communications
DSP	dsp.ti.com	Computers and Peripherals	www.ti.com/computers
Clocks and Timers	www.ti.com/clocks	Consumer Electronics	www.ti.com/consumer-apps
Interface	interface.ti.com	Energy	www.ti.com/energy
Logic	logic.ti.com	Industrial	www.ti.com/industrial
Power Mgmt	power.ti.com	Medical	www.ti.com/medical
Microcontrollers	microcontroller.ti.com	Security	www.ti.com/security
RFID	www.ti-rfid.com	Space, Avionics & Defense	www.ti.com/space-avionics-defense
RF/IF and ZigBee® Solutions	www.ti.com/lprf	Video and Imaging	www.ti.com/video
		Wireless	www.ti.com/wireless-apps

Mailing Address: Texas Instruments, Post Office Box 655303, Dallas, Texas 75265
Copyright © 2010, Texas Instruments Incorporated