

REVISION HISTORY				
ECO	REV	DESCRIPTION	APP. ENG.	DATE
-	2	PRODUCTION	G. HOOVER	07-16-12

NOTES: UNLESS OTHERWISE SPECIFIED

- FAB PER IPC-A-600.
- MATERIAL: -LEAD FREE ASSEMBLY COMPLIANT, FR-370HR
-FINISHED THICKNESS TO BE 0.062" +/- .005"
-TOTAL OF 4 LAYERS WITH FINISHED COPPER THICKNESS 2.0 OZ. OUTER LAYERS, 1.0 OZ. INNER LAYERS.
STACKUP AS PER FIG.1, "LAYER STRUCTURE".
-FLAMMABILITY RATING: 94 V-0 MINIMUM.
- SIZE: CUT TO DIMENSIONS AND TOLERANCES SHOWN.
- DRILLING: -DRILL HOLES PER SCHEDULE. PLATE THROUGH HOLES WITH COPPER, 0.001" THICK MIN.
-ALL HOLE SIZES ARE SPECIFIED AFTER PLATING.
-HOLE LOCATION TOLERANCES SHALL BE 6 MILS DIAMETER TRUE POSITION.
- FINISH: -SMOBC USING LPI BOTH SIDES, COLOR GREEN.
-SILKSCREEN LEGENDS SHALL BE WHITE NON-CONDUCTIVE EPOXY INK.
-PLATING SHALL BE IMMERSION GOLD BOTH SIDES.
-EDGE CONNECTOR FINGERS SHALL HAVE HARD GOLD PLATE TO MINIMUM 30 MICROINCHES PER MIL-G-45204, TYPE II, CLASS 1, GRADE C, OVER 200 MICROINCHES LOW STRESS NICKEL PER QQ-N-290, CLASS 2.
-EDGE CONNECTOR SHALL HAVE MITERED CORNERS AND BEVELED EDGES AS PER FIGURE 2, "EDGE CONNECTOR DETAILS".
- DO NOT ALTER ARTWORK e.g. TO ADD LOGO OR DATE CODE. PAD SIZE CAN BE MODIFIED TO MEET END FINISH.
- PCBS SHALL BE RoHS COMPLIANT.
- PCB'S SHALL BE PANELIZED USING ROUTE AND RETAIN METHOD. THERE SHALL BE TWO RETAINING TABS ON ALL BOARD EDGES GREATER THAN 2.5 INCHES LONG.
- ELECTRICAL TEST STAMPS SHALL BE ON BOTTOM SIDE ONLY.

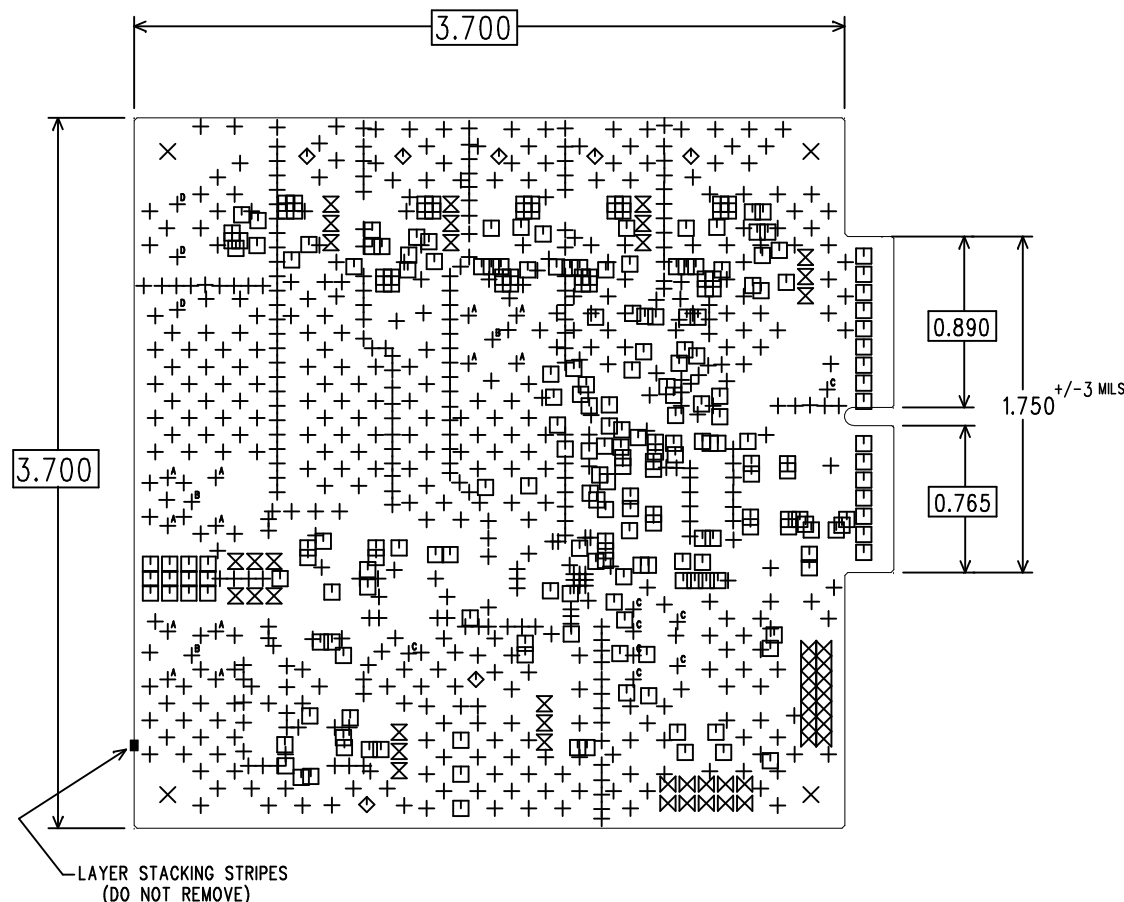


FIG. 1
LAYER STRUCTURE

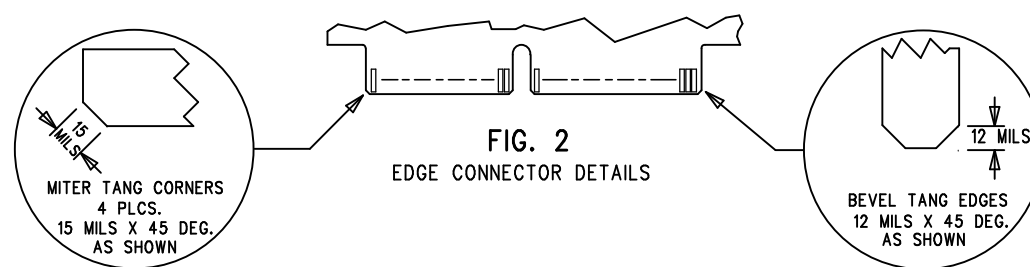
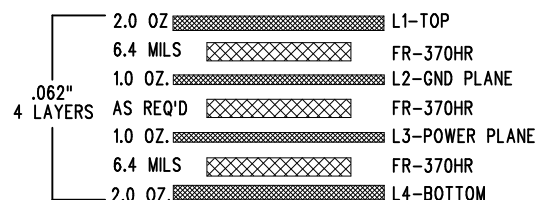


FIG. 2
EDGE CONNECTOR DETAILS

SIZE	QTY	SYM	PLATED	TOL
10	617	+	YES	+/- 3 MILS
12	247	□	YES	+/- 3 MILS
30	8	+ ^C	YES	+/- 3 MILS
35	24	⊗	YES	+/- 3 MILS
40	24	⊗	YES	+/- 3 MILS
51	3	+ ^B	YES	+/- 3 MILS
60	12	+ ^A	YES	+/- 3 MILS
65	7	◇	YES	+/- 3 MILS
95	3	+ ^D	YES	+/- 3 MILS
188	4	×	NO	+/- 3 MILS

DRILL DRAWING

UNLESS OTHERWISE SPECIFIED		APPROVALS			
DIMENSIONS ARE IN INCHES		PCB DES.	M. HAWKINS		
TOLERANCES:		APP ENG.	G. HOOVER	TITLE: FABRICATION DRAWING	
0.XX" = ±0.01"				LOW NOISE, HIGH SPEED	
0.XXX" = ±0.005"				20-BIT SAR ADC	
INTERPRET DIM AND TOL PER ASME Y14.5M-1994				SIZE	IC NO.
THIRD ANGLE PROJECTION				N/A	LTC237XCMS-20 FAMILY
					DEMO CIRCUIT 1925A
		SCALE = NONE		FILENAME: DC1925A-2.PCB	REV 2
					SHT 1 OF 1

1630 MCCARTHY BLVD
MILPITAS, CA 95035
PH: (408)432-1900
www.linear.com
LTC CONFIDENTIAL-
FOR CUSTOMER USE ONLY