

FAN7171-F085

600 V / 4 A, High-Side Automotive Gate Driver IC

Description

The FAN7171-F085 is a monolithic high-side gate drive IC that can drive high-speed MOSFETs and IGBTs that operate up to +600 V. It has a buffered output stage with all NMOS transistors designed for high pulse current driving capability and minimum cross-conduction.

ON Semiconductor's high-voltage process and common-mode noise-canceling techniques provide stable operation of the high-side driver under high-dv/dt noise circumstances. An advanced level-shift circuit offers high-side gate driver operation up to $V_S = -9.8$ V (typical) for $V_{BS} = 15$ V.

The UVLO circuit prevents malfunction when V_{BS} is lower than the specified threshold voltage.

The high-current and low-output voltage-drop feature make this device suitable for sustaining switch drivers and energy-recovery switch drivers in automotive motor drive inverters, switching power supplies, and high-power DC-DC converter applications.

Features

- Floating Channel for Bootstrap Operation to +600 V
- 4 A Sourcing and 4 A Sinking Current Driving Capability
- Common-Mode dv/dt Noise-Cancelling Circuit
- 3.3 V and 5 V Input Logic Compatible
- Output In-phase with Input Signal
- Under-Voltage Lockout for V_{BS}
- 25 V Shunt Regulator on V_{DD} and V_{BS}
- 8-SOIC Package, Case 751EB (JEDEC MS-012, 0.150 inch Narrow Body)
- Automotive Qualified to AEC Q100 for Ambient Operating Temperature from -40°C to 125°C

Applications

- Common Rail Injection Systems
- DC-DC Converter
- Motor Drive (Electric Power Steering, Fans)

Related Product Resources

- FAN7171-F085 Product Folder
- AN-6076 Design and Application Guide of Bootstrap Circuit for High-Voltage Gate-Drive IC
- AN-8102 200 Recommendations to Avoid Short Pulse Width Issues in HVIC Gate Driver Applications
- AN-9052 Design Guide for Selection of Bootstrap Components
- AN-4171 FAN7085 High-Side Gate Driver- Internal Recharge Path Design Considerations



ON Semiconductor®

www.onsemi.com



SOIC8
CASE 751EB

ORDERING INFORMATION

| Device | Package | Shipping† |
|----------------|---|-------------|
| FAN7171M-F085 | Case 751EB (Pb-Free / Halogen Free) | Tube |
| FAN7171MX-F085 | | Tape & Reel |

†For information on tape and reel specifications, including part orientation and tape sizes, please refer to our Tape and Reel Packaging Specification Brochure, BRD8011/D.

1. These devices passed wave soldering test by JESD22A-111.
2. A suffix as "...F085P" has been temporarily introduced in order to manage a double source strategy as ON Semiconductor has officially announced in Aug 2014.

FAN7171-F085

TYPICAL APPLICATION

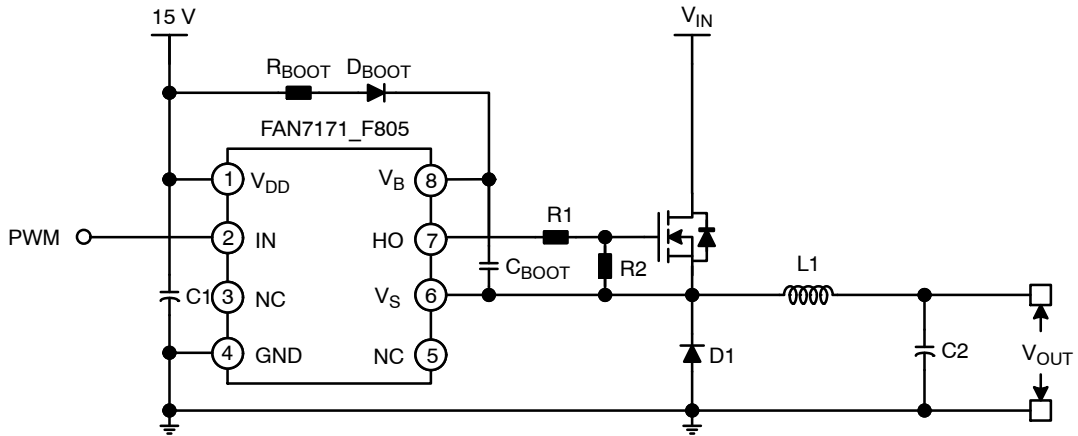


Figure 1. Typical Application

BLOCK DIAGRAM

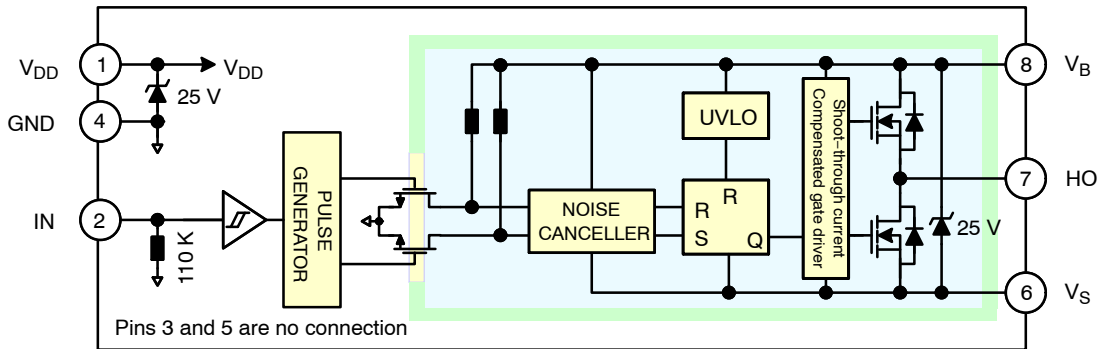


Figure 2. Block Diagram

PIN CONFIGURATION

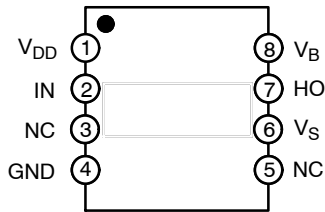


Figure 3. Pin Assignment (Top Through View)

FAN7171–F085

Table 1. PIN DESCRIPTIONS

| Pin # | Name | Description |
|-------|-----------------|--|
| 1 | V _{DD} | Supply Voltage |
| 2 | IN | Logic Input for High–Side Gate Driver Output |
| 3 | NC | No Connection |
| 4 | GND | Ground |
| 5 | NC | No Connection |
| 6 | V _S | High–Voltage Floating Supply Return |
| 7 | HO | High–Side Driver Output |
| 8 | V _B | High–Side Floating Supply |

Table 2. ABSOLUTE MAXIMUM RATINGS

| Symbol | Characteristics | Min. | Max. | Unit |
|---------------------|--|------------------------------------|----------------------|------|
| V _S | High–Side Floating Offset Voltage | V _B –V _{SHUNT} | V _B +0.3 | V |
| V _B | High–Side Floating Supply Voltage (Note 3) | –0.3 | 625.0 | V |
| V _{HO} | High–Side Floating Output Voltage | V _S –0.3 | V _B +0.3 | V |
| V _{DD} | Low–Side and Logic Supply Voltage (Note 3) | –0.3 | V _{SHUNT} | V |
| V _{IN} | Logic Input Voltage | –0.3 | V _{DD} +0.3 | V |
| dV _S /dt | Allowable Offset Voltage Slew Rate | | ±50 | V/ns |
| P _D | Power Dissipation (Notes 4, 5, 6) | | 0.625 | W |
| θ _{JA} | Thermal Resistance | | 200 | °C/W |
| T _J | Junction Temperature | –55 | 150 | °C |
| T _{STG} | Storage Temperature | –55 | 150 | °C |
| T _A | Operating Ambient Temperature | –40 | 125 | °C |
| ESD | Human Body Model (HBM) | | 1500 | V |
| | Charge Device Model (CDM) | | 500 | |

Stresses exceeding those listed in the Maximum Ratings table may damage the device. If any of these limits are exceeded, device functionality should not be assumed, damage may occur and reliability may be affected.

- This IC contains a shunt regulator on V_{DD} and V_{BS} with a normal breakdown voltage of 25 V. Please note that this supply pin should not be driven by a low–impedance voltage source greater than the V_{SHUNT} specified in the Electrical Characteristics section.
- Mounted on 76.2 x 114.3 x 1.6 mm PCB (FR–4 glass epoxy material).
- Refer to the following standards:
 JESD51–2: Integral circuits thermal test method environmental conditions, natural convection, and
 JESD51–3: Low effective thermal conductivity test board for leaded surface–mount packages.
- Do not exceed power dissipation (P_D) under any circumstances.

Table 3. RECOMMENDED OPERATING CONDITIONS

| Symbol | Characteristics | Min. | Max. | Unit |
|--------------------|--|--------------------|--------------------|------|
| V _{BS} | High–Side Floating Supply Voltage | V _S +10 | V _S +20 | V |
| V _S | High–Side Floating Supply Offset Voltage (DC) | 6–V _{DD} | 600 | V |
| | High–Side Floating Supply Offset Voltage (Transient) | –15 (~170) | | |
| | | –7 (~400) | | |
| V _{HO} | High–Side Output Voltage | V _S | V _B | V |
| V _{IN} | Logic Input Voltage | GND | V _{DD} | V |
| V _{DD} | Supply Voltage | 10 | 20 | V |
| T _{PULSE} | Minimum Input Pulse Width (Note 7) | 80 | – | ns |

Functional operation above the stresses listed in the Recommended Operating Ranges is not implied. Extended exposure to stresses beyond the Recommended Operating Ranges limits may affect device reliability.

FAN7171–F085

7. Input pulses shorter than the minimum recommendation can cause abnormal output. Short input pulses can be turn on pulses (i.e., rising edge to the adjacent falling edge), turn off pulses (i.e., falling edge to the adjacent rising edge) but also parasitic pulses induced by noise. Refer to Figure 24 and Figure 25. Value guaranteed by design.

Table 4. ELECTRICAL CHARACTERISTICS

(V_{BIAS} (V_{DD} , V_{BS}) = 15 V, $-40^{\circ}\text{C} \leq T_A \leq 125^{\circ}\text{C}$, unless otherwise specified. The V_{IN} and I_{IN} parameters are referenced to GND. The V_O and I_O parameters are relative to V_S and are applicable to the respective output HO)

| Symbol | Parameter | Conditions | Min. | Typ. | Max. | Unit |
|--|--|--|------|------|------|---------------|
| POWER SUPPLY SECTION | | | | | | |
| I_{QDD} | Quiescent V_{DD} Supply Current | $V_{IN} = 0\text{ V or }5\text{ V}$ | | 25 | 70 | μA |
| I_{PDD} | Operating V_{DD} Supply Current | $f_{IN} = 20\text{ kHz}$, No Load | | 35 | 100 | μA |
| BOOTSTRAPPED SUPPLY SECTION | | | | | | |
| V_{BSUV+} | V_{BS} Supply Under-Voltage Positive-Going Threshold Voltage | $V_{BS} = \text{Sweep}$ | 8.2 | 9.2 | 10.2 | V |
| V_{BSUV-} | V_{BS} Supply Under-Voltage Negative-Going Threshold Voltage | $V_{BS} = \text{Sweep}$ | 7.5 | 8.5 | 9.5 | V |
| V_{BSHYS} | V_{BS} Supply UVLO Hysteresis Voltage | $V_{BS} = \text{Sweep}$ | | 0.6 | | V |
| I_{LK} | Offset Supply Leakage Current | $V_B = V_S = 600\text{ V}$ | | | 50 | μA |
| I_{QBS} | Quiescent V_{BS} Supply Current | $V_{IN} = 0\text{ V or }5\text{ V}$ | | 60 | 120 | μA |
| I_{PBS} | Operating V_{BS} Supply Current | $C_{LOAD} = 1\text{ nF}$, $f_{IN} = 20\text{ kHz}$, RMS Value | | 0.73 | 2.80 | mA |
| SHUNT REGULATOR SECTION | | | | | | |
| V_{SHUNT} | V_{DD} and V_{BS} Shunt Regulator Clamping Voltage | $I_{SHUNT} = 5\text{ mA}$ | 23 | 25 | | V |
| INPUT LOGIC SECTION (IN) | | | | | | |
| V_{IH} | Logic "1" Input Voltage | | 2.5 | | | V |
| V_{IL} | Logic "0" Input Voltage | | | | 0.8 | V |
| I_{IN+} | Logic Input High Bias Current | $V_{IN} = 5\text{ V}$ | | 45 | 125 | μA |
| I_{IN-} | Logic Input Low Bias Current | $V_{IN} = 0\text{ V}$ | | | 2 | μA |
| R_{IN} | Input Pull-down Resistance | | 40 | 110 | | k Ω |
| GATE DRIVER OUTPUT SECTION (HO) | | | | | | |
| V_{OH} | High Level Output Voltage ($V_{BIAS} - V_O$) | No Load | | | 1.5 | V |
| V_{OL} | Low Level Output Voltage | No Load | | | 35 | mV |
| I_{O+} | Output High, Short-Circuit Pulsed Current (Note 8) | $V_{HO} = 0\text{ V}$, $V_{IN} = 5\text{ V}$, $PW \leq 10\text{ }\mu\text{s}$ | 3.0 | 4.0 | | A |
| I_{O-} | Output Low, Short-Circuit Pulsed Current (Note 8) | $V_{HO} = 15\text{ V}$, $V_{IN} = 0\text{ V}$, $PW \leq 10\text{ }\mu\text{s}$ | 3.0 | 4.0 | | A |
| V_S | Allowable Negative V_S Pin Voltage for IN Signal Propagation to HO | | | -9.8 | -7.0 | V |

Product parametric performance is indicated in the Electrical Characteristics for the listed test conditions, unless otherwise noted. Product performance may not be indicated by the Electrical Characteristics if operated under different conditions.

8. These parameters guaranteed by design.

Table 5. DYNAMIC ELECTRICAL CHARACTERISTICS

(V_{BIAS} (V_{DD} , V_{BS}) = 15 V, $V_S = \text{GND} = 0\text{ V}$, $C_L = 1000\text{ pF}$, and $-40^{\circ}\text{C} \leq T_A \leq 125^{\circ}\text{C}$, unless otherwise specified)

| Symbol | Parameter | Conditions | Min. | Typ. | Max. | Unit |
|-----------|----------------------------|--------------------|------|------|------|------|
| t_{ON} | Turn-On Propagation Delay | $V_S = 0\text{ V}$ | | 150 | 210 | ns |
| t_{OFF} | Turn-Off Propagation Delay | $V_S = 0\text{ V}$ | | 150 | 210 | ns |

FAN7171-F085

Table 5. DYNAMIC ELECTRICAL CHARACTERISTICS (continued)

(V_{BIAS} (V_{DD} , V_{BS}) = 15 V, V_S = GND = 0 V, C_L = 1000 pF, and $-40^\circ\text{C} \leq T_A \leq 125^\circ\text{C}$, unless otherwise specified)

| Symbol | Parameter | Conditions | Min. | Typ. | Max. | Unit |
|--------|--------------------|------------|------|------|------|------|
| t_R | Turn-On Rise Time | | | 25 | 50 | ns |
| t_F | Turn-Off Fall Time | | | 15 | 45 | ns |

TYPICAL PERFORMANCE CHARACTERISTICS

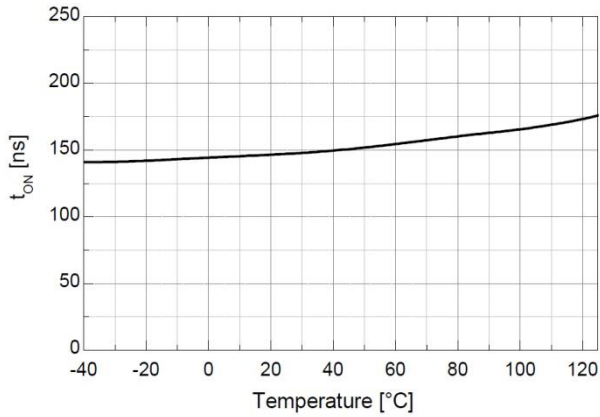


Figure 4. Turn-On Propagation Delay vs. Temperature

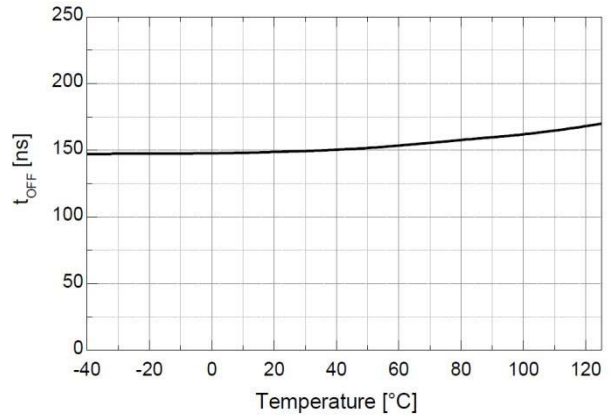


Figure 5. Turn-Off Propagation Delay vs. Temperature

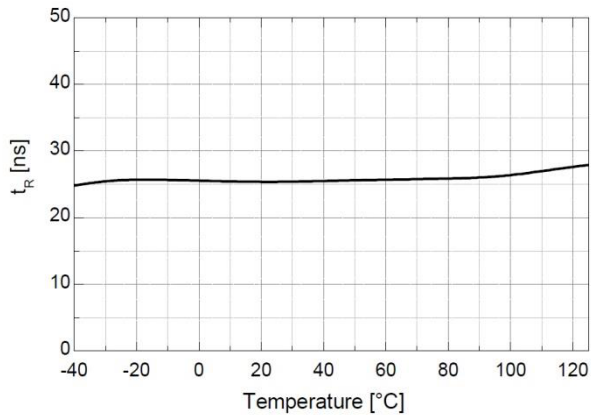


Figure 7. Turn-On Rise Time vs. Temperature

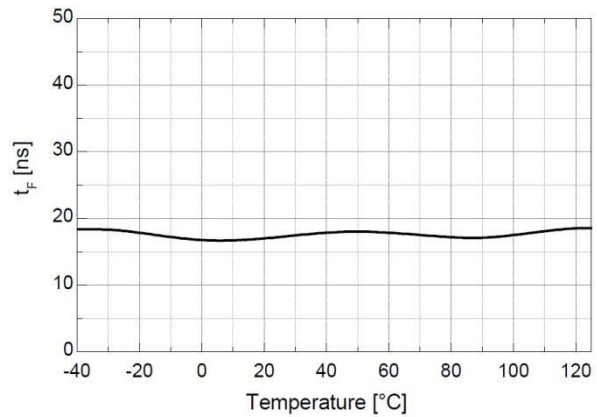


Figure 6. Turn-Off Fall Time vs. Temperature

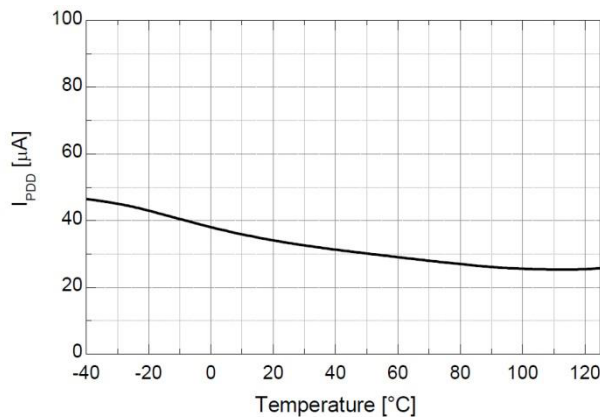


Figure 9. Operating V_{DD} Supply Current vs. Temperature

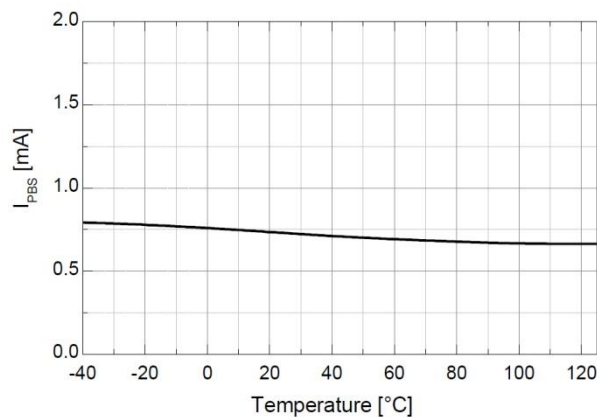


Figure 8. Operating V_{BS} Supply Current vs. Temperature

TYPICAL PERFORMANCE CHARACTERISTICS (continued)

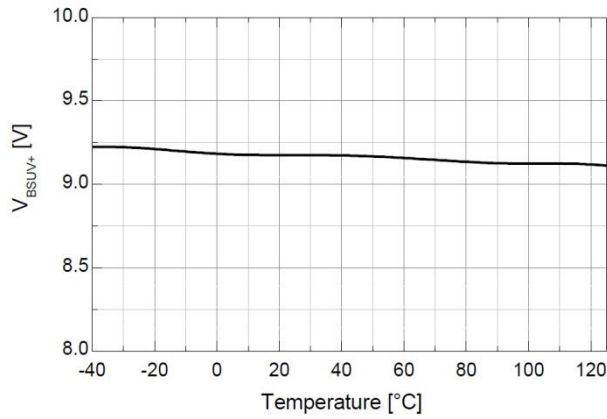


Figure 10. V_{BS} UVLO+ vs. Temperature

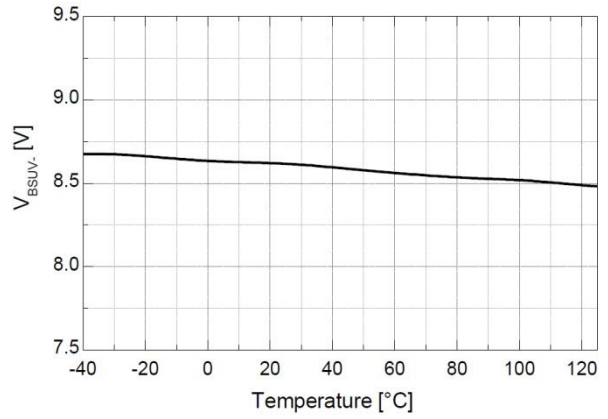


Figure 11. V_{BS} UVLO- vs. Temperature

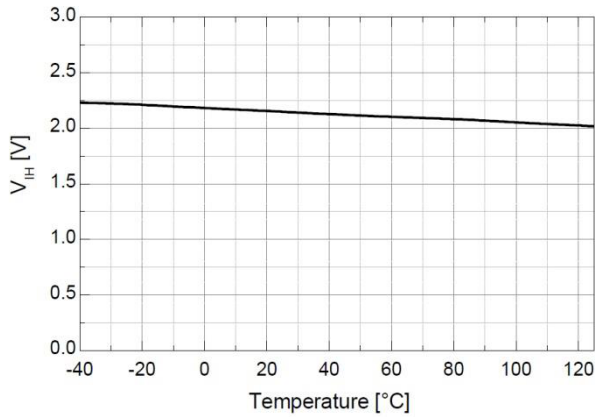


Figure 13. Logic High Input Voltage vs. Temperature

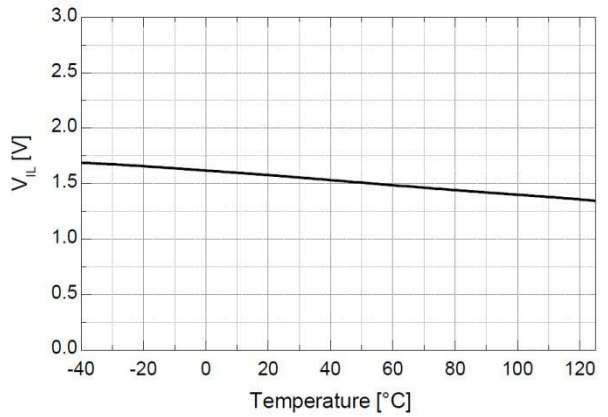


Figure 12. Logic Low Input Voltage vs. Temperature

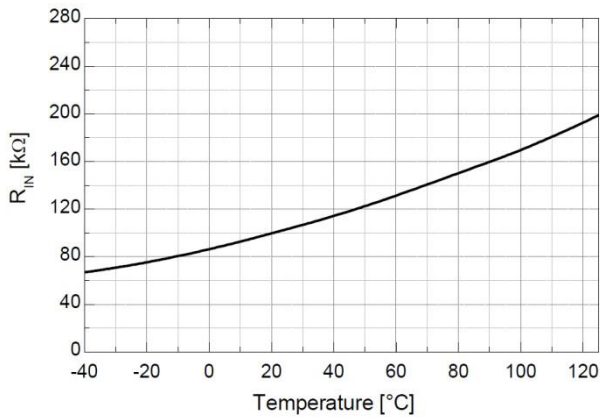


Figure 15. Input Pull-Down Resistance vs. Temperature

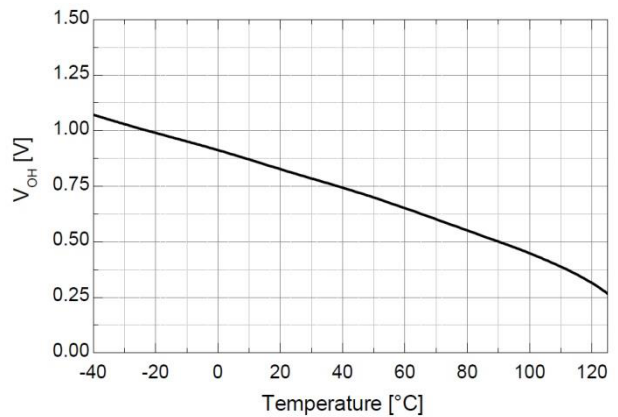


Figure 14. High-Level output Voltage vs. Temperature

TYPICAL PERFORMANCE CHARACTERISTICS (continued)

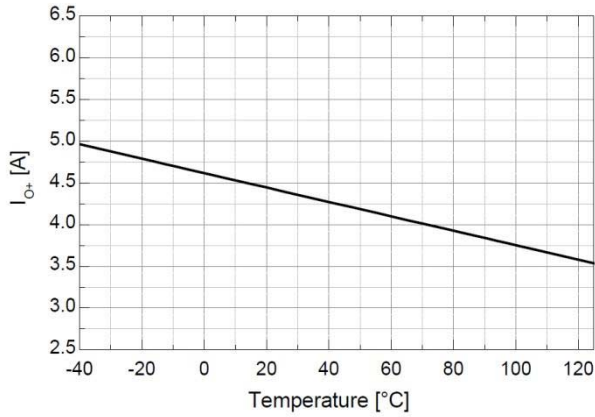


Figure 16. Output High, Short-Circuit Pulsed Current vs. Temperature

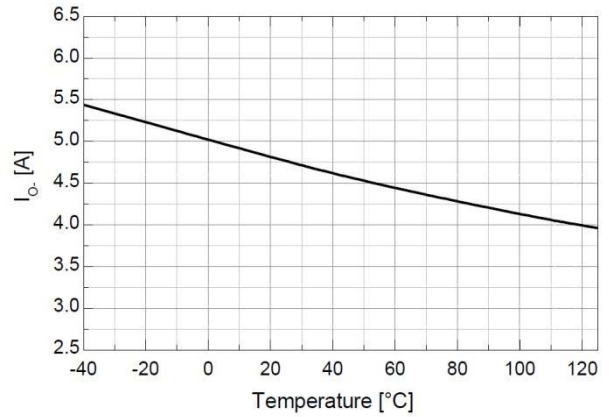


Figure 17. Output Low, Short-Circuit Pulsed Current vs. Temperature

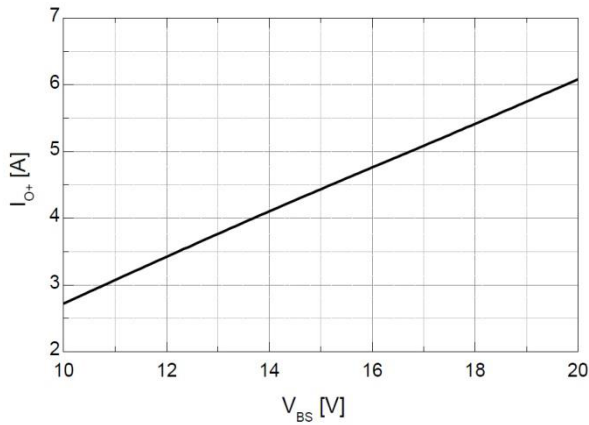


Figure 19. Output High, Short-Circuit Pulsed Current vs. Supply Voltage

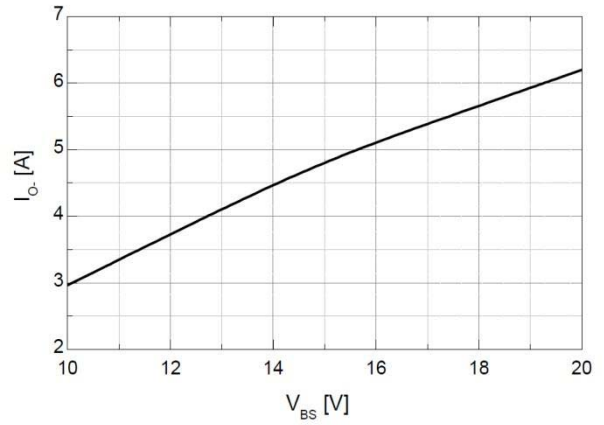


Figure 18. Output Low, Short-Circuit Pulsed Current vs. Supply Voltage

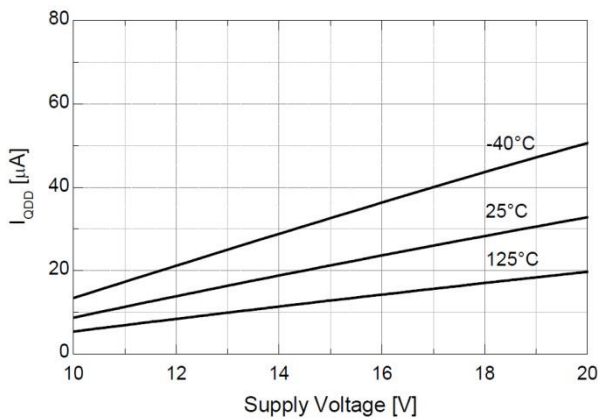


Figure 21. Quiescent V_{DD} Supply Current vs. Supply Voltage

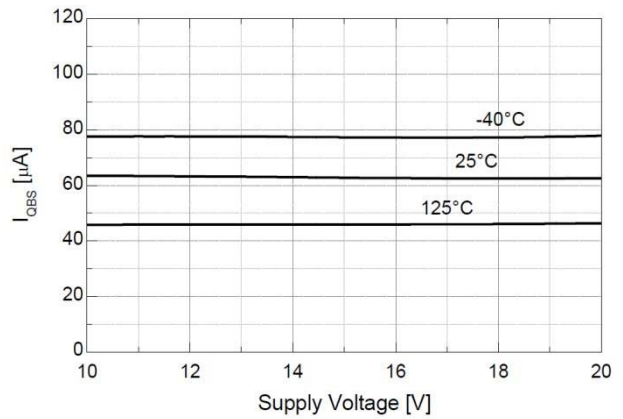


Figure 20. Quiescent V_{BS} Supply Current vs. Supply Voltage

FAN7171-F085

SWITCHING TIME DEFINITIONS

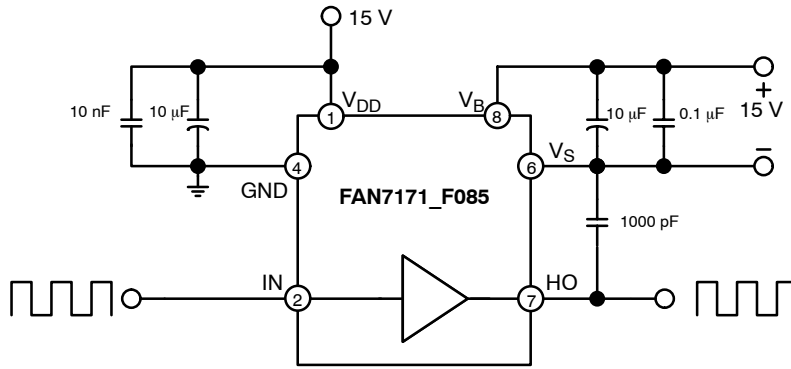


Figure 22. Switching Time Test Circuit (Referenced 8-SOIC)

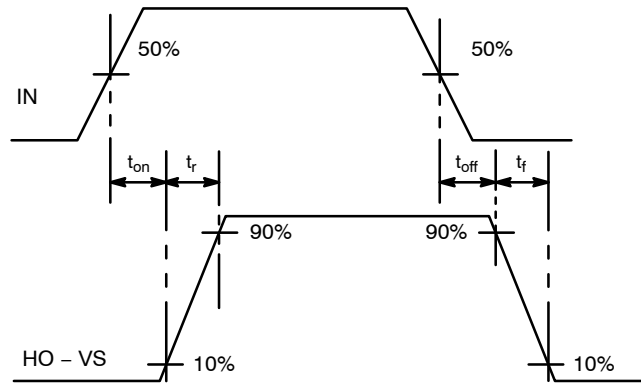


Figure 23. Switching Time Waveform Definitions

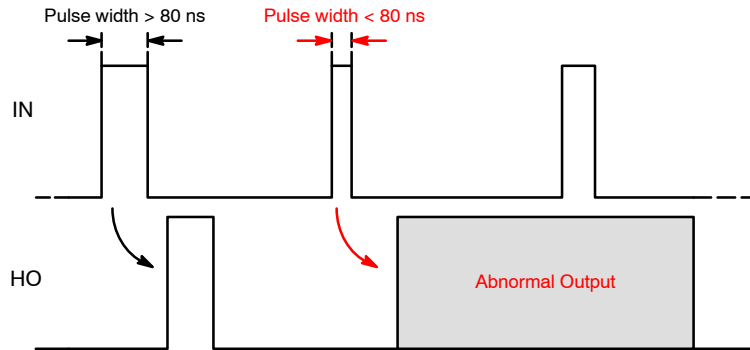


Figure 24. Output Waveform with Short Turn On Input Pulse Width

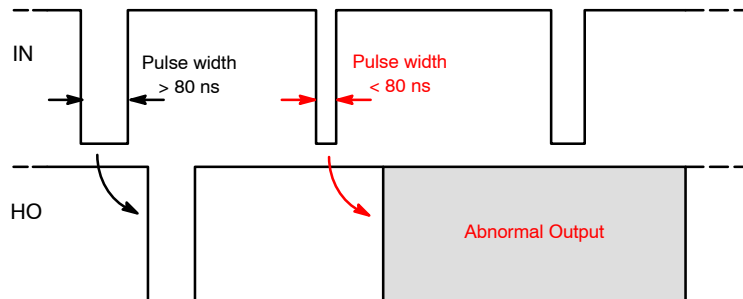


Figure 25. Output Waveform with Short Turn Off Input Pulse Width

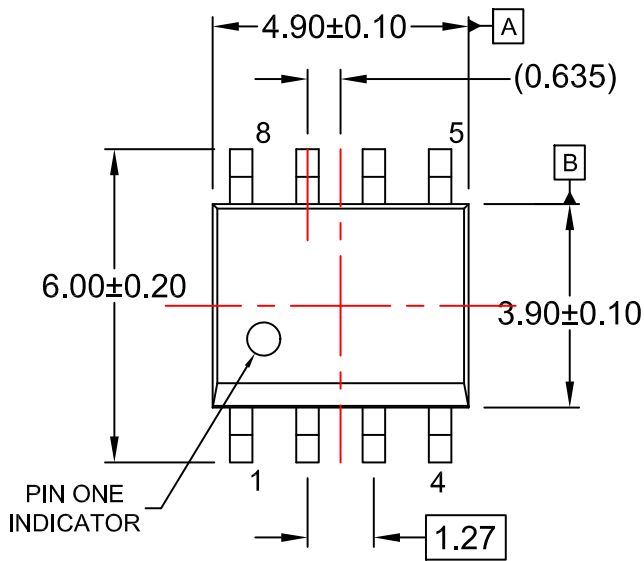
MECHANICAL CASE OUTLINE
PACKAGE DIMENSIONS

ON Semiconductor®

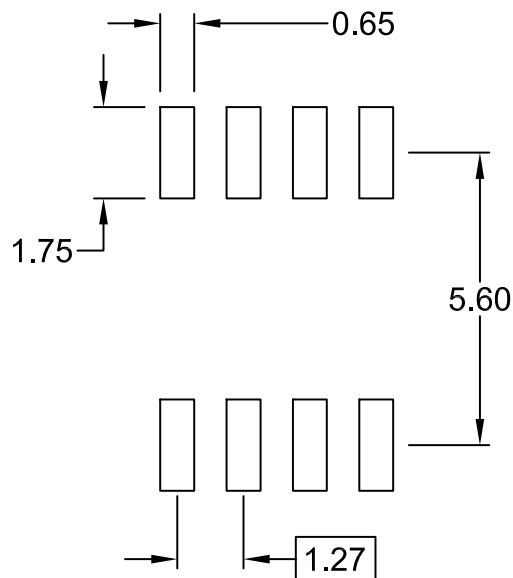


SOIC8
CASE 751EB
ISSUE A

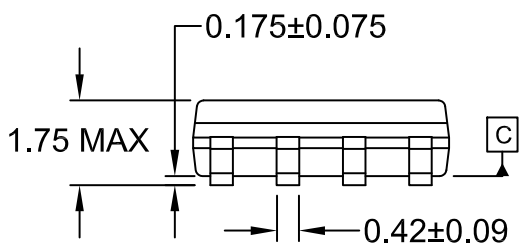
DATE 24 AUG 2017



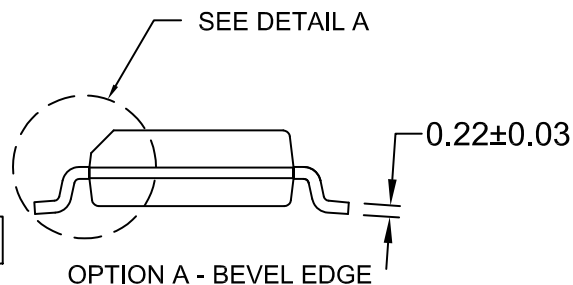
\varnothing 0.25 (M) C B A



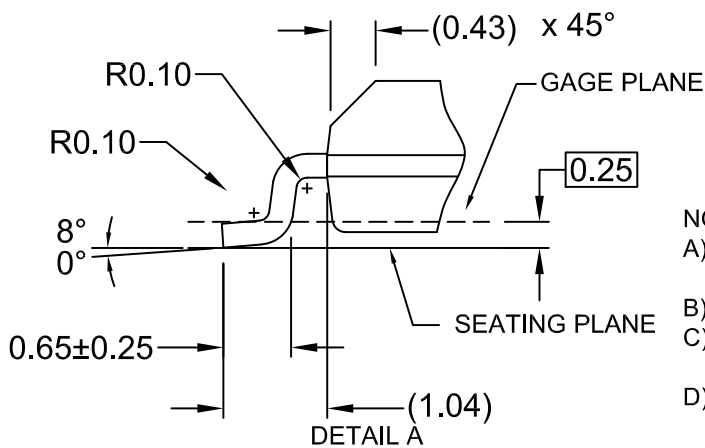
LAND PATTERN RECOMMENDATION



$\frac{1}{2}$ 0.10



OPTION B - NO BEVEL EDGE



DETAIL A
 SCALE: 2:1

NOTES:

- A) THIS PACKAGE CONFORMS TO JEDEC MS-012, VARIATION AA.
- B) ALL DIMENSIONS ARE IN MILLIMETERS.
- C) DIMENSIONS DO NOT INCLUDE MOLD FLASH OR BURRS.
- D) LANDPATTERN STANDARD: SOIC127P600X175-8M

| | | |
|-------------------------|--------------------|--|
| DOCUMENT NUMBER: | 98AON13735G | Electronic versions are uncontrolled except when accessed directly from the Document Repository. Printed versions are uncontrolled except when stamped "CONTROLLED COPY" in red. |
| DESCRIPTION: | SOIC8 | PAGE 1 OF 1 |

ON Semiconductor and are trademarks of Semiconductor Components Industries, LLC dba ON Semiconductor or its subsidiaries in the United States and/or other countries. ON Semiconductor reserves the right to make changes without further notice to any products herein. ON Semiconductor makes no warranty, representation or guarantee regarding the suitability of its products for any particular purpose, nor does ON Semiconductor assume any liability arising out of the application or use of any product or circuit, and specifically disclaims any and all liability, including without limitation special, consequential or incidental damages. ON Semiconductor does not convey any license under its patent rights nor the rights of others.

ON Semiconductor and  are trademarks of Semiconductor Components Industries, LLC dba ON Semiconductor or its subsidiaries in the United States and/or other countries. ON Semiconductor owns the rights to a number of patents, trademarks, copyrights, trade secrets, and other intellectual property. A listing of ON Semiconductor's product/patent coverage may be accessed at www.onsemi.com/site/pdf/Patent-Marking.pdf. ON Semiconductor reserves the right to make changes without further notice to any products herein. ON Semiconductor makes no warranty, representation or guarantee regarding the suitability of its products for any particular purpose, nor does ON Semiconductor assume any liability arising out of the application or use of any product or circuit, and specifically disclaims any and all liability, including without limitation special, consequential or incidental damages. Buyer is responsible for its products and applications using ON Semiconductor products, including compliance with all laws, regulations and safety requirements or standards, regardless of any support or applications information provided by ON Semiconductor. "Typical" parameters which may be provided in ON Semiconductor data sheets and/or specifications can and do vary in different applications and actual performance may vary over time. All operating parameters, including "Typicals" must be validated for each customer application by customer's technical experts. ON Semiconductor does not convey any license under its patent rights nor the rights of others. ON Semiconductor products are not designed, intended, or authorized for use as a critical component in life support systems or any FDA Class 3 medical devices or medical devices with a same or similar classification in a foreign jurisdiction or any devices intended for implantation in the human body. Should Buyer purchase or use ON Semiconductor products for any such unintended or unauthorized application, Buyer shall indemnify and hold ON Semiconductor and its officers, employees, subsidiaries, affiliates, and distributors harmless against all claims, costs, damages, and expenses, and reasonable attorney fees arising out of, directly or indirectly, any claim of personal injury or death associated with such unintended or unauthorized use, even if such claim alleges that ON Semiconductor was negligent regarding the design or manufacture of the part. ON Semiconductor is an Equal Opportunity/Affirmative Action Employer. This literature is subject to all applicable copyright laws and is not for resale in any manner.

PUBLICATION ORDERING INFORMATION

LITERATURE FULFILLMENT:

Email Requests to: orderlit@onsemi.com

ON Semiconductor Website: www.onsemi.com

TECHNICAL SUPPORT

North American Technical Support:
Voice Mail: 1 800-282-9855 Toll Free USA/Canada
Phone: 011 421 33 790 2910

Europe, Middle East and Africa Technical Support:

Phone: 00421 33 790 2910

For additional information, please contact your local Sales Representative