

TSW12D1620 Evaluation module

User's Guide



Literature Number: SBAU323A
January 2019—Revised January 2019

Preface	4
1 Equipment	6
1.1 Evaluation Board Feature Identification Summary	6
1.2 Required Equipment.....	7
2 Setup Procedure	8
2.1 Install the High-Speed Data Converter (HSDC) Pro Software.....	9
2.2 Install the TSW12D1620EVM-CVAL GUI Software	9
2.3 Connect the EVM and TSW14DL3200EVM via the FMC-TSW14DL3200EVM Adapter Card	9
2.4 Connect the Power Supplies to the Boards (Power Off)	9
2.5 Connect the Clock Signal Generator to the EVM (RF Output Disabled Until Further Directed).....	9
2.6 Connect the Signal Generators to the EVM (RF Outputs Disabled Until Further Directed).....	10
2.7 Turn On the TSW14DL3200EVM Power and Connect to the PC	10
2.8 Turn On the TSW12D1620EVM-CVAL 5-V Power Supply and Connect to the PC.....	10
2.9 Turn On the Clock Signal Generator RF Output	10
2.10 Turn On the Signal Generator RF Outputs	10
2.11 Open the TSW12D1620EVM-CVAL GUI and Program the ADC and Clocks	11
2.12 Calibrate the ADC Device on the EVM.....	12
2.13 Open the HSDC Software and Load the FPGA Image to the TSW14DL3200EVM.....	13
2.14 Capture Data Using the HSDC Pro Software	14
3 Device Configuration	15
3.1 Tab Organization	15
3.1.1 EVM (Quick Start) Tab	15
3.1.2 Temperature Tab	17
3.1.3 Control Tab.....	18
3.1.4 Input Sampling / LVDS Tab.....	19
3.1.5 Low Level View Tab	20
A Troubleshooting the TSW12D1620EVM-CVAL	21
Revision History	22

List of Figures

1.	TSW12D1620 Evaluation Module	4
1-1.	EVM Feature Locations	6
2-1.	EVM Test Setup.....	8
2-2.	Configuration GUI: EVM Tab	11
2-3.	Configuration GUI: Control Tab	12
2-4.	HSDC Pro GUI.....	14
3-1.	Configuration GUI: EVM Tab	15
3-2.	Configuration GUI: Status Log Panel	16
3-3.	Configuration GUI: Temperature Tab.....	17
3-4.	Configuration GUI: Control Tab	18
3-5.	Configuration GUI: Input Sampling / LVDS Tab.....	19
3-6.	Configuration GUI: Low-Level View Tab	20

List of Tables

3-1.	Low-Level Controls.....	20
A-1.	Troubleshooting	21

Introduction

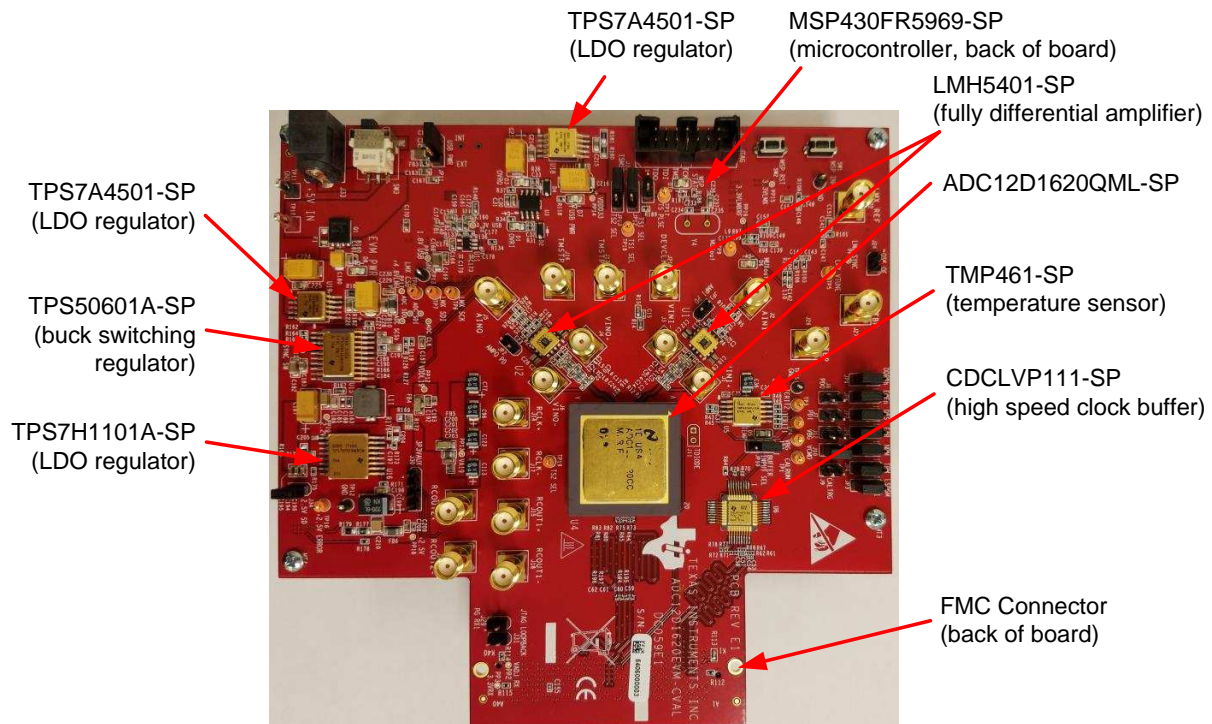


Figure 1. TSW12D1620 Evaluation Module

The TSW12D1620 evaluation module (EVM) is used to evaluate the ADC12D1620QML-SP analog-to-digital converter (ADC) from Texas Instruments. Throughout this document, the terms *evaluation board*, *evaluation module*, and *EVM* are synonymous with the TSW12D1620EVM-CVAL.

The ADC12D1620QML-SP is a dual-channel, 12-bit ADC, capable of operating at sampling rates up to 1.6 Giga-samples per second (GSPS) in dual-channel mode, or 3.2 GSPS in single-channel mode. The TSW12D1620EVM-CVAL device output data are transmitted over a high-speed low-voltage differential signaling (LVDS) interface. This evaluation board also includes the following important features:

- An LMH5401-SP high-performance differential amplifier for the single-ended to differential gain block
- Optional differential input network supporting signals from DC to >3 GHz (requires minor component changes)
- Transformer-coupled clock input network to test the ADC performance with an external low-noise clock source
- High-reliability voltage regulation solution
- A TMP461-SP local and remote diode temperature sensor
- Device register programming through the universal serial bus (USB) connector and an FTDI™ USB-to-serial bus translator

- High-speed LVDS data output via an FMC™ interface connector

The digital data from the TSW12D1620EVM-CVAL board is quickly and easily captured with the TSW14DL3200EVM data capture board and the included FMC-TSW14DL3200EVM adapter.

The TSW14DL3200EVM captures the LVDS data, stores the data in memory, and then uploads the data to a connected PC through a USB interface for analysis. The high-speed data converter pro (HSDC Pro) software on the PC communicates with the hardware and processes the data.

Throughout this document, the TSW12D1620EVM-CVAL is referred to as the *EVM* and the ADC12D1620QML-SP device is referred to as the *ADC* device.

Related Documentation

Technical Reference Documents

- Texas Instruments, [ADC12D1620QML-SP 12-Bit, Single Or Dual, 3200- or 1600-MSPS RF Sampling Analog-to-Digital Converter \(ADC\) data sheet](#)
- Texas Instruments, [TSW14DL3200 High-Speed LVDS Data Capture and Pattern Generator User's Guide](#)
- Texas Instruments, [High Speed Data Converter Pro GUI user's guide](#) (The HSDC Pro is also available in the software help menu.)
- Texas Instruments, [LMH5401-SP Radiation Hardened 6.5-GHz, Low-Noise, Low-Power, Gain-Configurable Fully Differential Amplifier data sheet](#)
- Texas Instruments, [TMP461-SP Radiation Hardened Remote and Local Digital Temperature Sensor data sheet](#)
- FTDI Chip, [FTDI USB to Serial Driver Installation Manual](#)

TSW14DL3200EVM Operation

See the [TSW14DL3200EVM user's guide](#) for configuration and status information.

Trademarks

FMC is a trademark of FMC Corporation.

FTDI is a trademark of Future Technology Devices International Ltd..

K&L Microwave is a trademark of K&L Microwave.

Keysight is a trademark of Keysight Technologies.

Windows is a registered trademark of Microsoft Corporation.

Rohde & Schwarz is a registered trademark of Rohde & Schwarz GmbH & Co..

Trilithic is a trademark of Trilithic, Inc..

All other trademarks are the property of their respective owners.

Equipment

This section describes the equipment needed to evaluate the full performance of the ADC device.

1.1 Evaluation Board Feature Identification Summary

Figure 1-1 shows the EVM features.

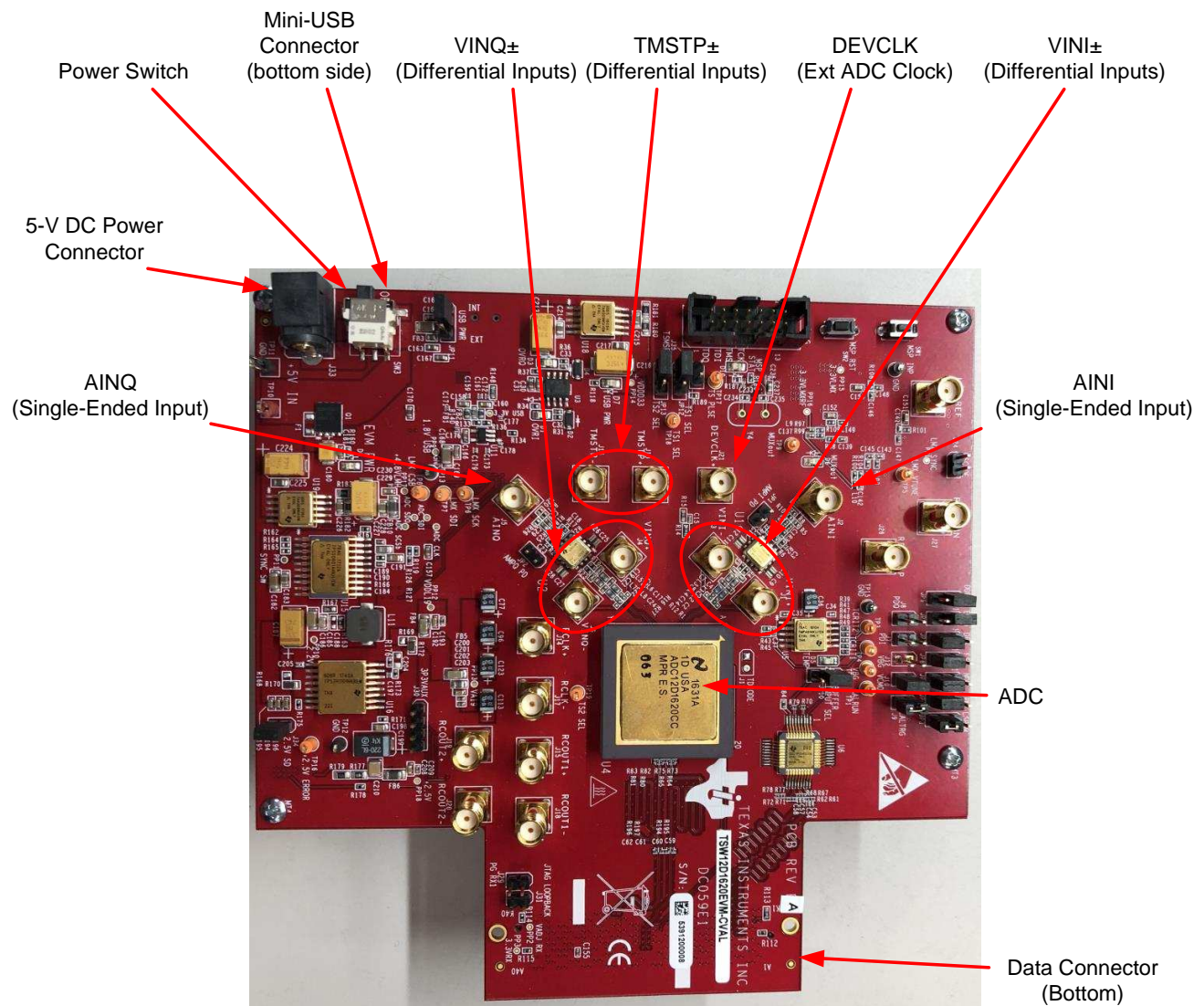


Figure 1-1. EVM Feature Locations

1.2 Required Equipment

The following equipment are included in the EVM evaluation kit:

- Evaluation board (EVM)
- Mini-USB cable
- Power cable
- FMC-TSW14DL3200EVM adapter board

The following equipment is *not* included in the EVM evaluation kit, but is required for evaluation of this product:

- TSW12D1620EVM-CVAL GUI software
- TSW14DL3200EVM data capture board and related items
- HSDC Pro software
- Computer (PC) running the Windows® operating system (XP, 7, 8, or 10)
- One low-noise signal generator for the analog input; TI recommends the following generators:
 - Keysight™ E8663D
 - Rohde & Schwarz® SMA100A or SMA100B
- Band-pass filter for the analog input signal (750 MHz or desired frequency); the following filters are recommended:
 - Band-pass filter (BPF):
 - Greater than or equal to 60-dB harmonic attenuation
 - Less than or equal to 5% bandwidth
 - Greater than 6-dBm power
 - Less than 5-dB insertion loss
 - Trilithic™ 5VH-series tunable BPF
 - K&L Microwave™ BT-series tunable BPF
 - TTE KC6 or KC7-series fixed BPF
- Signal-path cables, SMA, or BNC (or both SMA and BNC)

By default, the TSW12D1620EVM-CVAL uses an external clock source. Future versions of the board may support the LMX2615-SP integrated PLL/VCO onboard clock source. The following equipment is recommended for the external clock source:

- One low-noise signal generator for the ADC DEVCLK input. TI recommends models similar to the analog input source.
- A band-pass filter for the DEVCLK input. TI recommends a filter similar to the analog input path filter.

Setup Procedure

This section describes how to setup the EVM on the bench with the proper equipment to evaluate the full performance of the ADC device. [Figure 2-1](#) shows the EVM test setup.

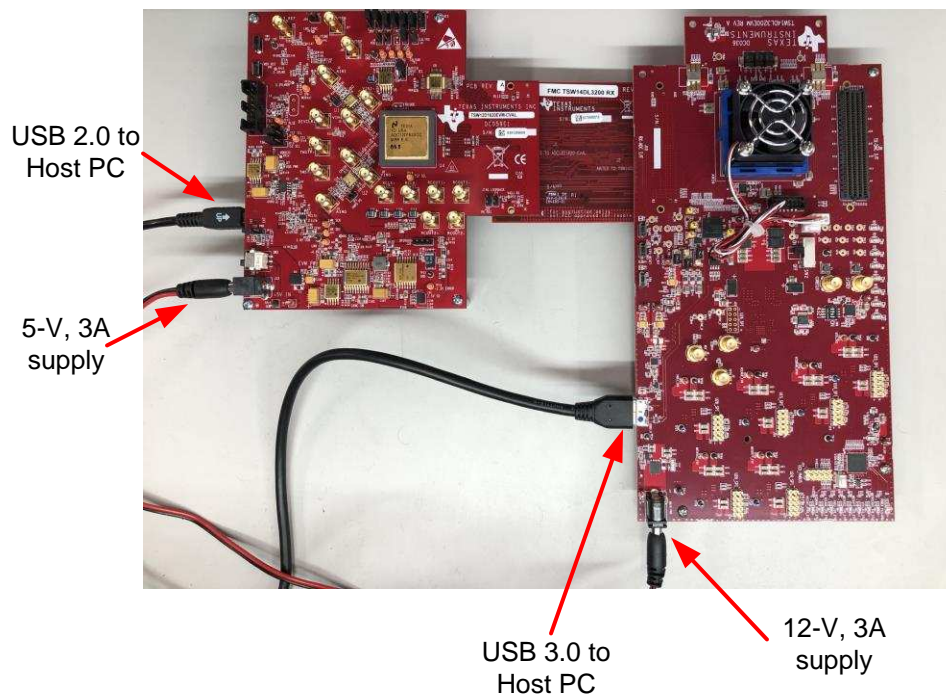


Figure 2-1. EVM Test Setup

NOTE: The HSDC Pro software must be installed before connecting the TSW12D1620EVM-CVAL and TSW14DL3200EVM to the PC for the first time.

2.1 Install the High-Speed Data Converter (HSDC) Pro Software

Download the most recent version of the HSDC Pro software from www.ti.com/tool/dataconverterpro-sw. Follow the installation instructions to install the software.

2.2 Install the TSW12D1620EVM-CVAL GUI Software

1. Download the TSW12D1620EVM-CVAL graphical user interface (GUI) software from the EVM tool folder at www.ti.com/tool/TSW12D1620EVM-CVAL.
2. Extract the files from the compressed zip file.
3. Run the executable file (setup.exe), and follow the instructions.

2.3 Connect the EVM and TSW14DL3200EVM via the FMC-TSW14DL3200EVM Adapter Card

With the power off, connect the TSW12D1620EVM-CVAL to the TSW14DL3200EVM through the FMC-TSW14DL3200EVM adapter card as illustrated in [Figure 2-1](#). Make sure that the standoffs provide the proper height for robust connector connections.

2.4 Connect the Power Supplies to the Boards (Power Off)

1. Confirm that the power switch on the TSW14DL3200EVM is in the off position. Connect the power cable to a 12-V DC (minimum 3 A) power supply. Verify the proper supply polarity by confirming that the outer surface of the barrel connector is GND and the inner portion of the connector is 12 V. Connect the power cable to the EVM power connector.
2. Confirm that the power switch on the TSW12D1620EVM-CVAL is on the off position. Connect the power cable to a 5-V DC (minimum 3 A) power supply for the TSW12D1620EVM-CVAL. **If using an adjustable or lab DC power supply, adjust the voltage setting to 5.3 V.** Verify the proper supply polarity by confirming that the outer surface of the barrel connector is GND and the inner portion of the connector is a positive voltage. Connect the power cable to the EVM power connector.

CAUTION

Make sure that the power connections to the EVMs are the correct polarity. Failure to do so can result in immediate damage.

Make sure that the 12-V power supply is connected to the TSW14DL3200EVM and not the TSW12D1620EVM-CVAL. Providing the TSW12D1620EVM-CVAL with 12 V of power can result in immediate damage.

Leave the TSW12D1620EVM-CVAL and TSW14DL3200EVM power switches in the off position until directed later.

2.5 Connect the Clock Signal Generator to the EVM (RF Output Disabled Until Further Directed)

Connect a signal generator to the DEVCLK input of the EVM through a band-pass filter. This signal generator must be a low-noise signal generator. In addition, TI recommends a Trilithic-tunable band-pass filter to minimize harmonics and noise coming from the generator. Configure the signal generator for the desired clock frequency in the range of 0.2 GHz to 1.6 GHz. For best performance when using an RF signal generator, the power input to the CLK SMA connector must be 9 dBm (2.2 V_{PP} into 50 Ω). The signal generator must increase above 9 dB by an amount equal to any additional attenuation in the clock signal path, such as the insertion loss of the band-pass filter and cables. For example, if the filter insertion loss is 2 dB, the signal generator must be set to 9 dBm + 2 dB = 11 dBm.

2.6 Connect the Signal Generators to the EVM (RF Outputs Disabled Until Further Directed)

Connect a signal generator to the VIN input of the TSW12D1620EVM-CVAL through a band-pass filter and attenuator at the SMA connector. This generator must be a low-noise signal type. TI recommends a Trilithic-tunable band-pass filter to filter the signal from the generator. Configure the signal generator for 147.77 MHz, **-10 dBm**.

2.7 Turn On the TSW14DL3200EVM Power and Connect to the PC

1. Turn on the 12-V power supply connected to the TSW14DL3200EVM.
2. Turn on the power switch on the TSW14DL3200EVM.
3. Connect a mini-USB 3.0 cable from the PC to the TSW14DL3200EVM.
4. If the TSW14DL3200EVM has not previously been connected to the PC, follow the on-screen instructions to automatically install the device drivers. See the [TSW14DL3200EVM user's guide](#) for specific instructions.

2.8 Turn On the TSW12D1620EVM-CVAL 5-V Power Supply and Connect to the PC

1. Turn on the 5-V power supply to power up the EVM.
2. Turn on the power switch on the TSW12D1620EVM-CVAL.
3. Connect the EVM to the PC with the mini-USB cable.

2.9 Turn On the Clock Signal Generator RF Output

Turn on the RF signal output of the signal generator connected to the DEVCLK input.

2.10 Turn On the Signal Generator RF Outputs

Turn on the RF signal output of the signal generator connected to VIN.

2.11 Open the TSW12D1620EVM-CVAL GUI and Program the ADC and Clocks

The device configuration GUI is installed separately from the HSDC Pro installation and is a stand-alone GUI.

Figure 2-2 shows the GUI open window to the *EVM* tab. Tabs at the top of the panel organize the configuration into device and EVM features, with user-friendly controls and a low-level tab for directly configuring the registers. The EVM has one configurable device: that along with the TMP461-SP is used for temperature monitoring of the EVM and ADC. The register map for these devices is provided in the device data sheets.



Figure 2-2. Configuration GUI: EVM Tab

1. Open the TSW12D1620EVM-CVAL GUI.
2. Select the external clock as the clock source.
3. Select Fclk = 1600 MHz as the external Fclk selection.
4. Select *nonDES* operating mode.
5. Click *Program Clocks and ADC*. This action overwrites any previous device register settings.

2.12 Calibrate the ADC Device on the EVM

Figure 2-3 shows the GUI open window to the *Control* tab.

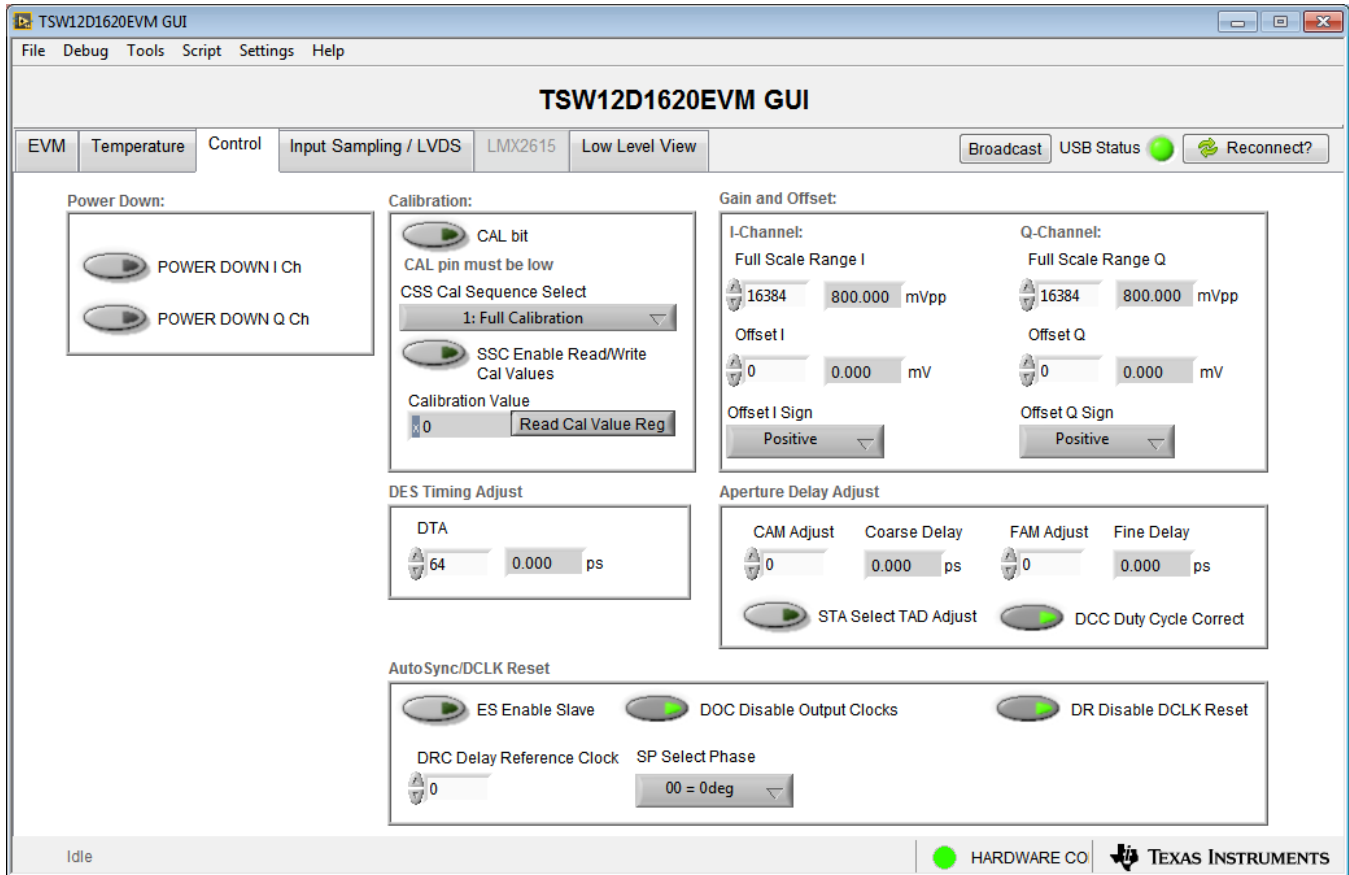


Figure 2-3. Configuration GUI: Control Tab

1. With the EVM GUI open on the PC, navigate to the *Control* tab.
2. To calibrate the ADC, click the *CAL bit* button one time, and then click the button again. This action triggers a new on-command calibration.

NOTE: The *CAL bit* button executes a calibration sequence that is required for full performance. This calibration is performed automatically during the previous step provided in [Section 2.11](#), but must be performed again any time the sampling rate changes, after significant temperature change of the ADC, or after exiting the power-down mode. **See the [ADC12D1620QML-SP device data sheet](#) for details regarding the necessary calibration sequence.**

2.13 Open the HSDC Software and Load the FPGA Image to the TSW14DL3200EVM

1. Open the HSDC Pro software.
2. Click *OK* to confirm the serial number of the TSW14DL3200EVM device. If multiple TSWxxxx boards are connected, select the model and serial number for the one connected to the TSW12D1620EVM-CVAL.
3. Using the green pulldown, select *ADC12D1620_NonLSPSM_Demux_nonDES_DCLK90_DDR*.
4. When prompted, click *Yes* to update the firmware.
5. If the load firmware prompt does not appear, select *Instrument Options>Download Firmware* and choose *TSW14DL3200_FIRMWARE_COMPONENT_MODE_800M.bin*.

NOTE: If the user configures the EVM with options other than the default register values, different instructions may be required for selecting the device in HSDC Pro.

6. Enter the ADC output data rate (f_{SAMPLE}) as *1600M* or the desired output sample rate. This number must be equal to the actual sampling rate of the device, and must be updated if the sampling rate changes.
7. Proceed to capture data; see [Section 2.14](#).

2.14 Capture Data Using the HSDC Pro Software

Figure 2-4 shows the HSDC Pro GUI. The following steps show how to capture data using the HSDC Pro software:

1. Select the test to perform.
2. Select the data view.
3. Select the channel to view.
4. Click the *Capture* button to capture new data.

Additional tips:

- Use the *Notch Frequency Bins* from the *Test Options* file menu to remove bins around DC (eliminate DC noise and offset) or the fundamental (eliminate phase noise from signal generators).
- Open the *Capture Option* dialog from the *Data Capture Options* file menu to change the capture depth or to enable continuous capture or FFT averaging.
- For analyzing only a portion of the spectrum, use the *Single Tone* test with the *Bandwidth Integration Markers* from the *Test Options* file menu. The *Channel Power* test is also useful.
- For analyzing only a subset of the captured data, set the *Analysis Window (samples)* setting to a value less than the number of total samples captured and move the green or red markers in the small transient data window at the top of the screen to select the data subset of interest.



Figure 2-4. HSDC Pro GUI

Device Configuration

The ADC device is programmable through the serial programming interface (SPI) bus accessible through the FTDI USB-to-SPI converter located on the EVM. A GUI is provided to write instructions on the bus and program the registers of the ADC device.

For more information about the registers in the ADC device, see the [ADC12D1620QML-SP data sheet](#).

3.1 Tab Organization

Control of the ADC device features are available in the *EVM*, *Temperature Control*, *Input/Sampling/LVDS*, and *LMX2615* (may be enabled in future versions of the EVM and GUI) configuration tabs.

3.1.1 EVM (Quick Start) Tab

The *EVM* tab ([Figure 3-1](#)) is used to simplify initial configuration of the EVM. When the desired settings are chosen, clicking the **Program Clocks and ADC** button configures the EVM for use.

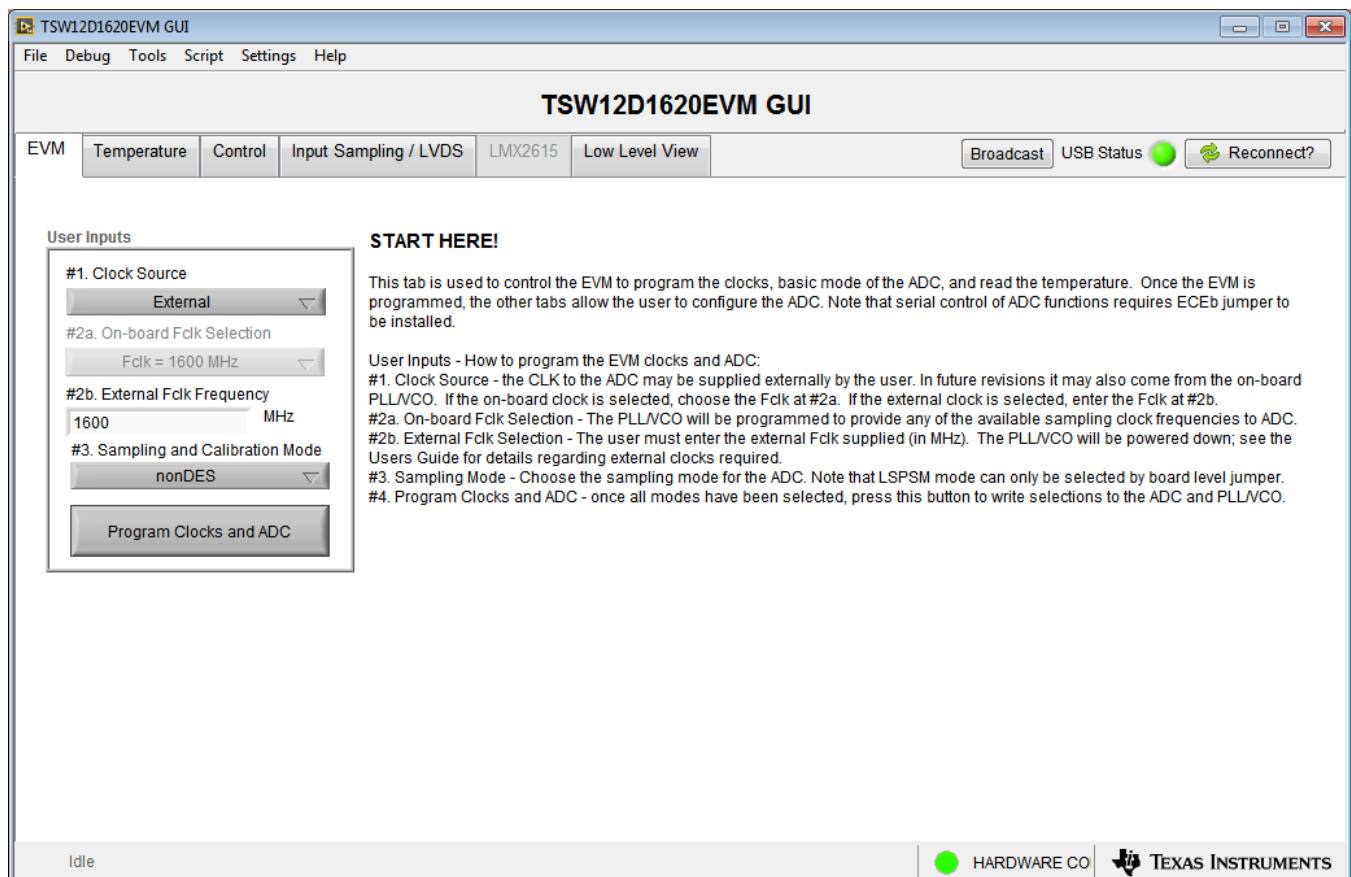


Figure 3-1. Configuration GUI: EVM Tab

Configure the EVM settings as needed using the selection buttons and entry fields, then click the **Program Clocks and ADC** button.

- #1 Select external clocking (future revisions of the EVM may support on-board clock generation, but that option is not currently available)
- #2a For future use: Select the on-board clock frequency to be generated
- #2b Enter the applied external clock frequency
- #3 Set the ADC sampling mode

A history of configuration writes and reads is available by doing the following:

1. Wait until *Idle* is displayed in the lower left corner of the GUI
2. Double click on *Idle* to launch the *Status Log* panel
3. Right-clicking within the *Status Log* panel shows the available commands. A command sequence can be saved for later usage or study by selecting the desired commands, and then right clicking and choosing *Save Selected*. [Figure 3-2](#) shows the status log panel.

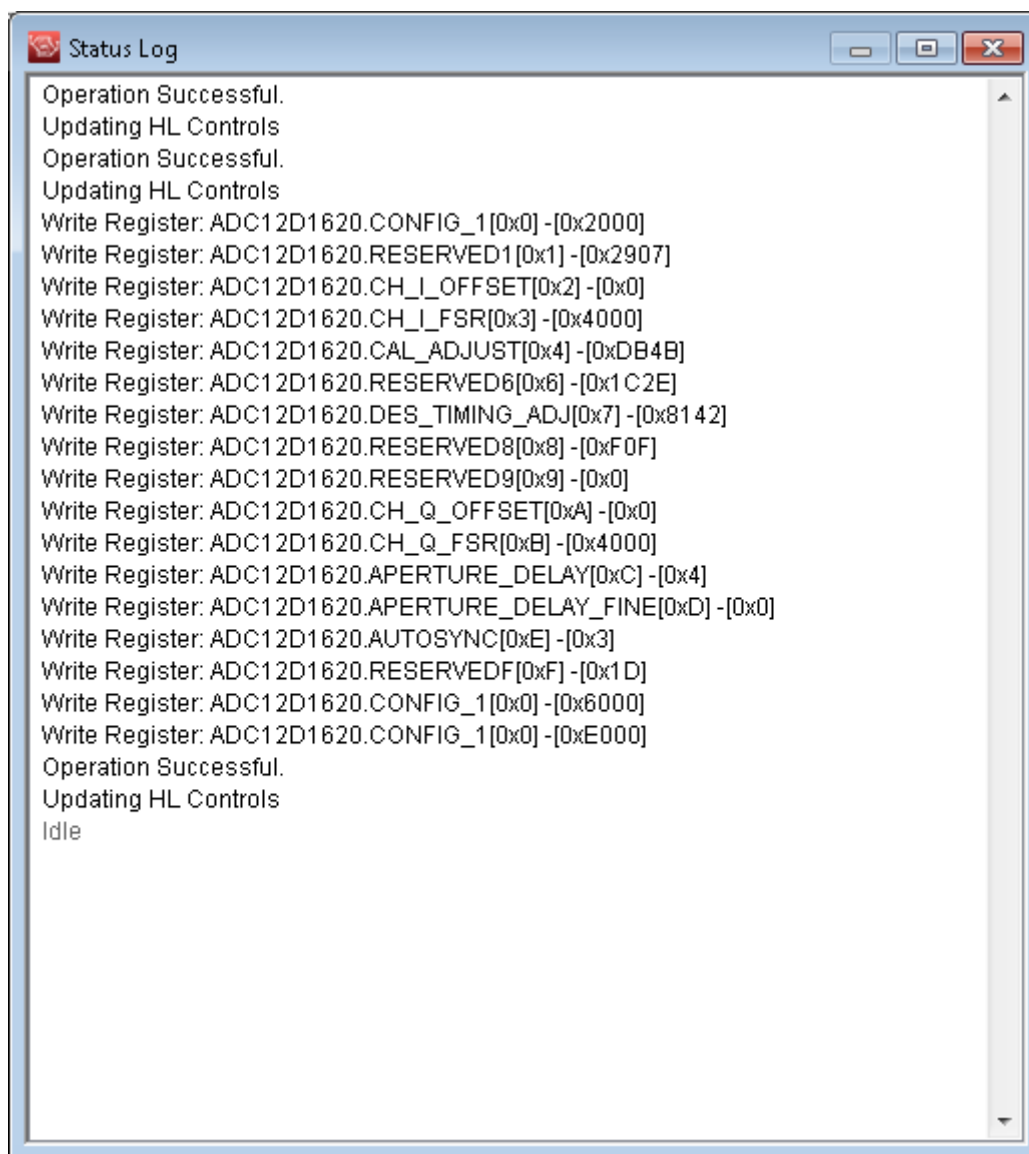


Figure 3-2. Configuration GUI: Status Log Panel

3.1.2 Temperature Tab

The *Temperature* tab (Figure 3-3) enables readout of the different on-board temperature sensors. Depending on the EVM configuration either or both of the TMP461 and MSP430 temperature readout methods is available.

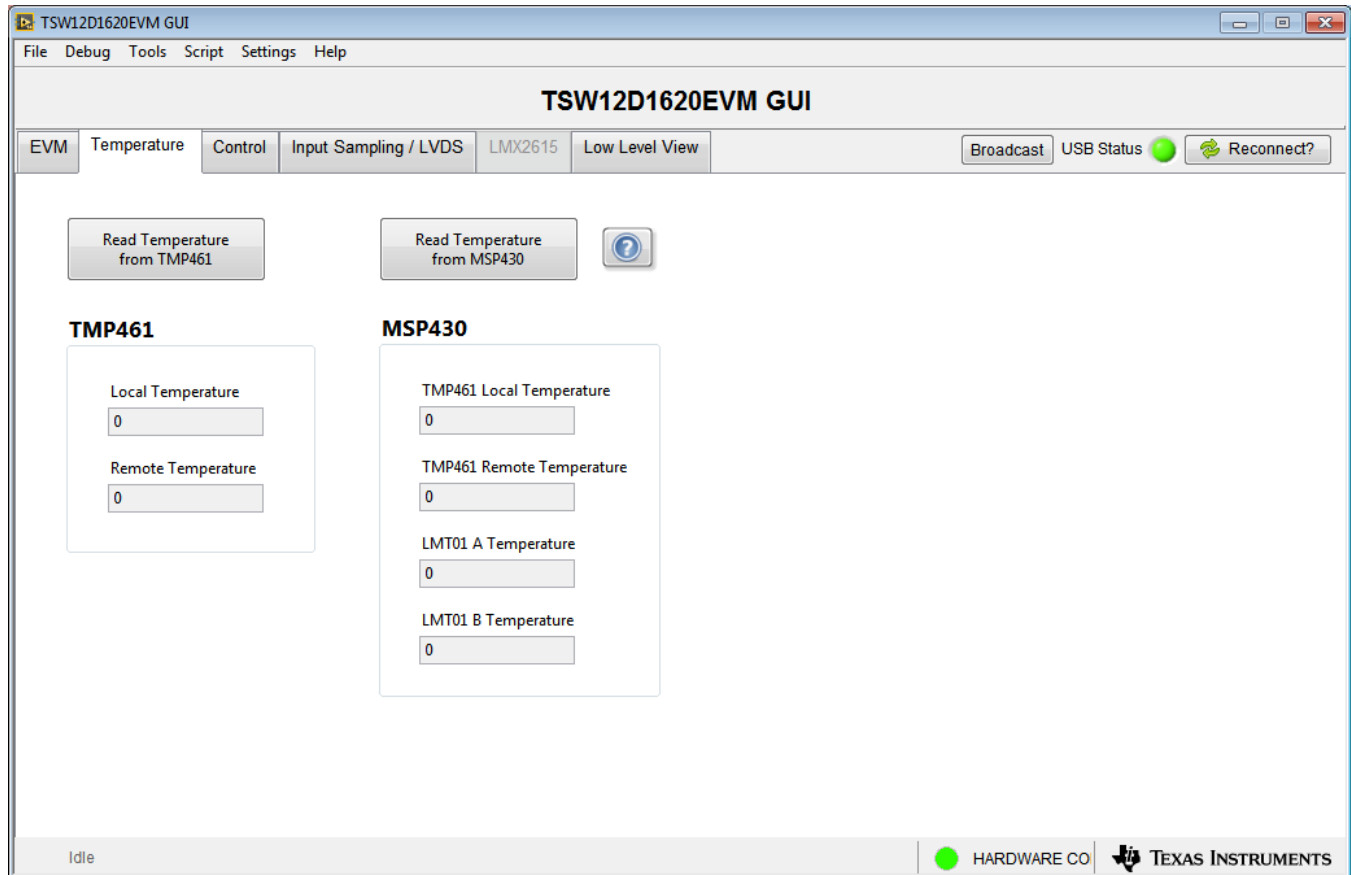


Figure 3-3. Configuration GUI: Temperature Tab

Click on one of the buttons to read temperatures.

- **Read Temperature from TMP461:** This method accesses the TMP461 using the FTDI USB to I²C interface.
- **Read Temperature from MSP430:** If enabled in hardware or firmware, this method uses the MSP430 to read the TMP461 using I²C and the LMT01 devices using the pulse count interface.

3.1.3 Control Tab

The *Control* tab (Figure 3-4) adjusts the ADC configuration to use a number of different serial interface registers.

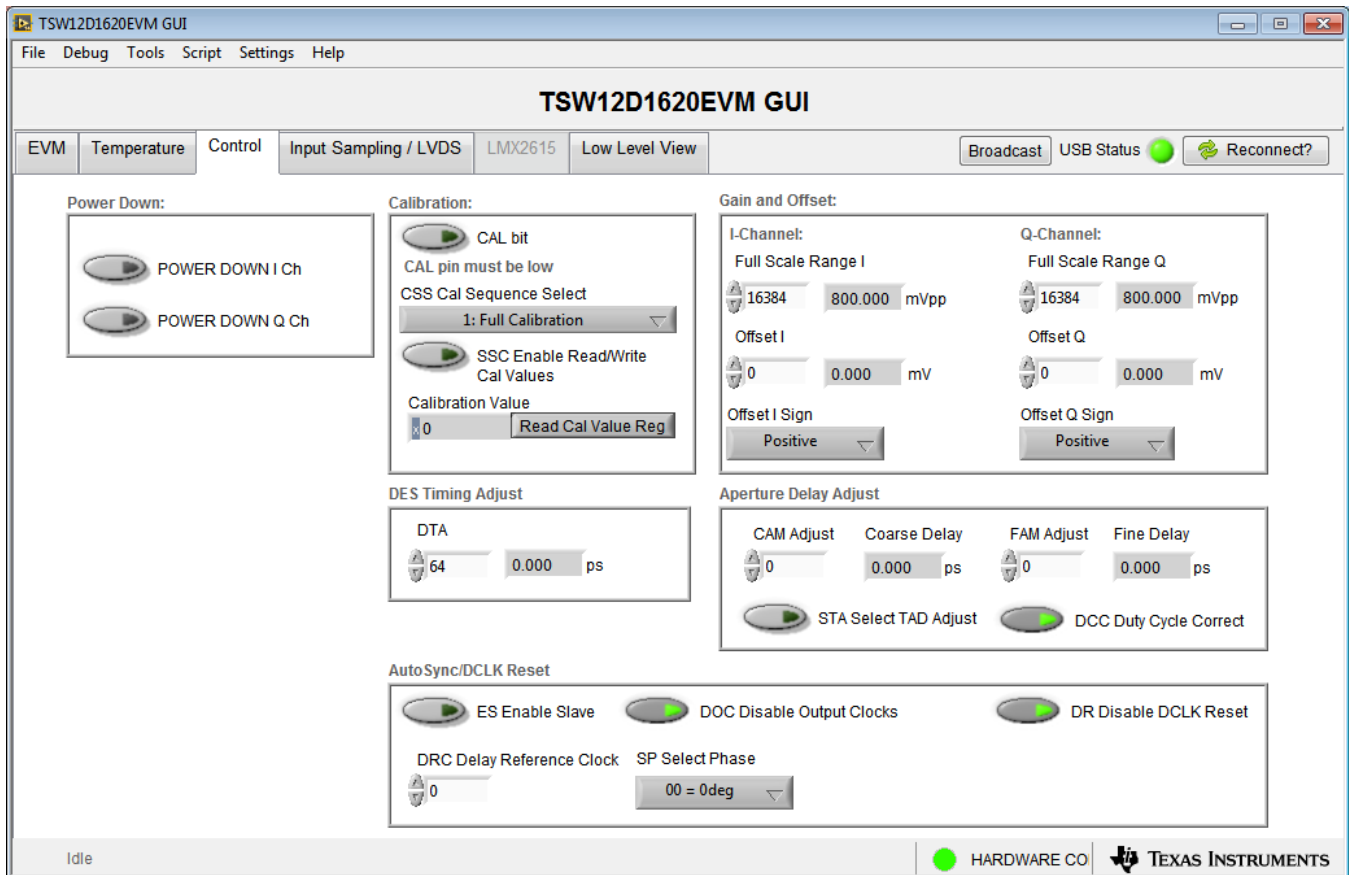


Figure 3-4. Configuration GUI: Control Tab

See the ADC12D1620QML-SP data sheet for information on the specific registers used. The following list summarizes the registers used.

- Power Down: configuration register 1
- Calibration: configuration register 1, calibration adjust
- Gain and Offset: I/Q-channel offset adjust, I/Q-channel full-scale range adjust
- DES Timing Adjust: DES timing adjust
- Aperture Delay Adjust: aperture delay coarse adjust, aperture delay fine adjust
- AutoSync/DCLK Reset: AutoSync

3.1.4 Input Sampling / LVDS Tab

Figure 3-5 shows the *Input Sampling / LVDS* tab.

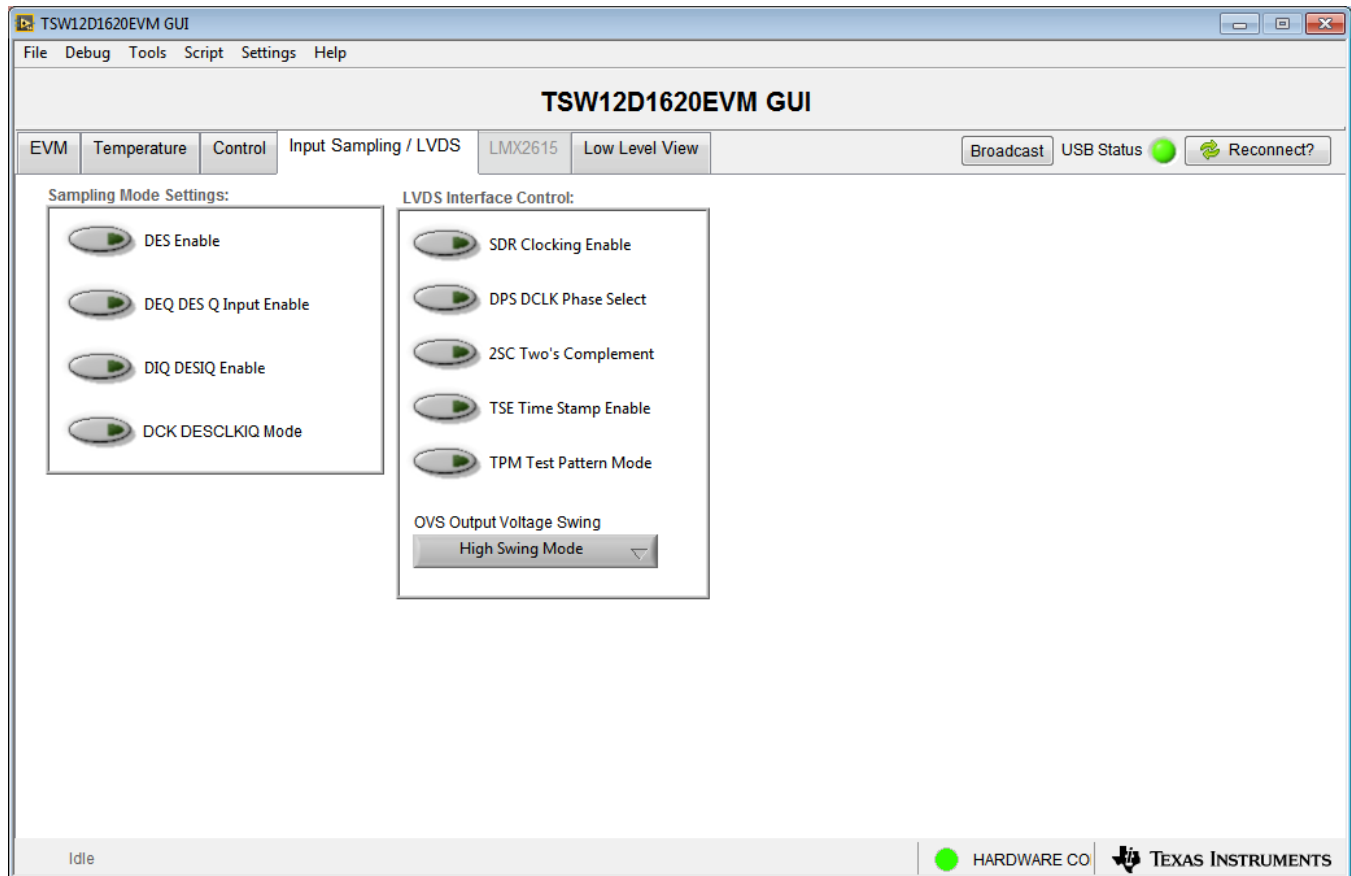


Figure 3-5. Configuration GUI: Input Sampling / LVDS Tab

See the ADC12D1620QML-SP data sheet for information on the specific registers used. The following list summarizes the registers used.

- Sampling Mode Settings: configuration register 1, AutoSync
- LVDS Interface Control: configuration register 1

3.1.5 Low Level View Tab

The *Low Level View* tab (Figure 3-6) allows configuration of the devices at the bit-field level. At any time, the controls in Table 3-1 can be used to configure or read from the device.

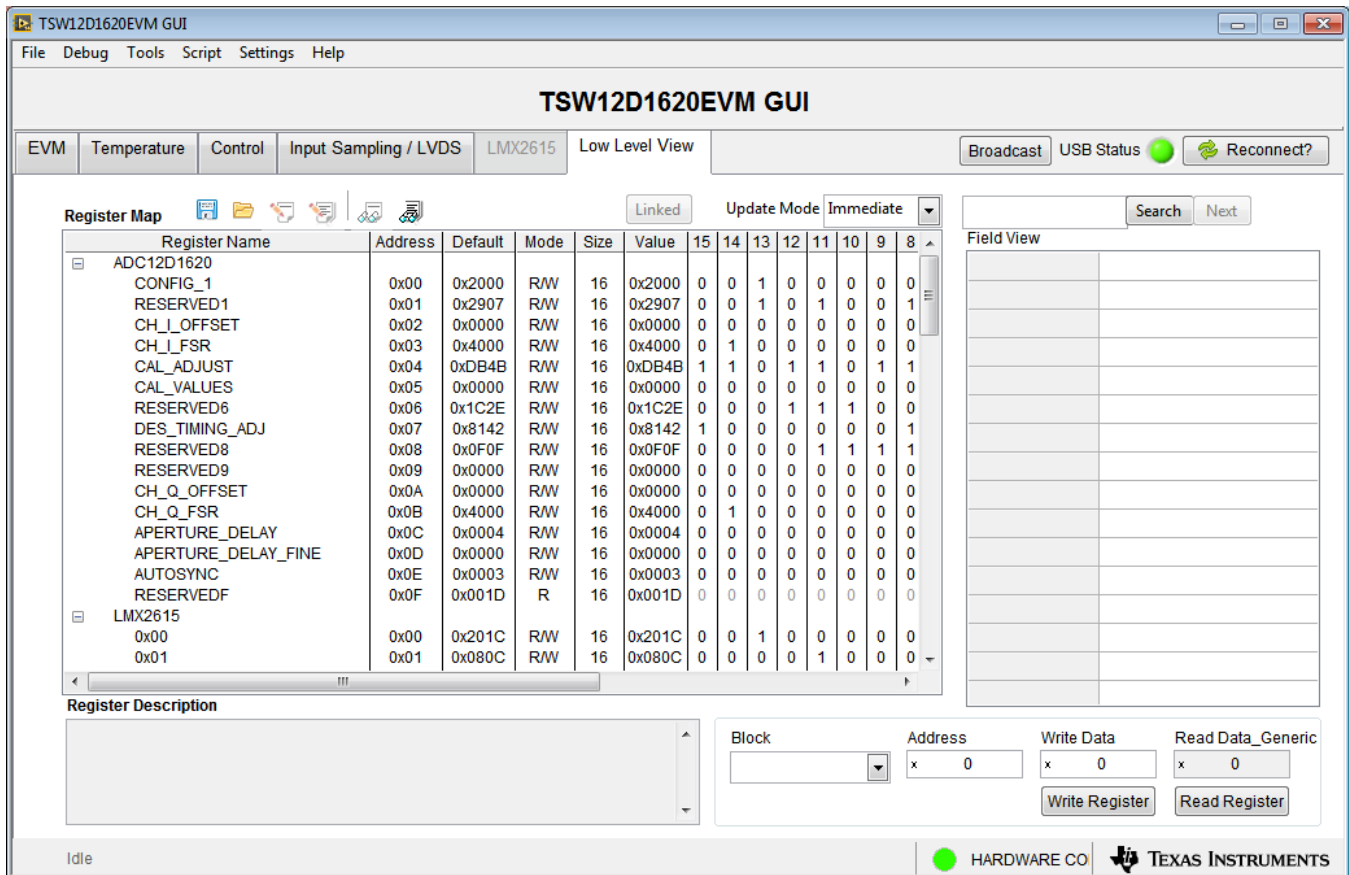


Figure 3-6. Configuration GUI: Low-Level View Tab

Table 3-1. Low-Level Controls

Control	Description
Register map summary	Displays the devices on the EVM, registers for those devices, and the states of the registers. <ul style="list-style-type: none"> Clicking on a register field allows individual bit manipulation in the register data cluster. The value column shows the value of the register at the time the GUI was last updated. The LR column shows the value of the register at the time the register was last read.
Write register button	Write to the register highlighted in the register map summary with the value in the <i>Write Data</i> field.
Write all button	Update all registers shown in the register map summary with the values shown in the <i>Register Map</i> summary.
Read register button	Read from the register highlighted in the <i>Register Map</i> summary and display the results in the <i>Read Data</i> field. This button can be used to synchronize the GUI with the state of the hardware.
Read-all button	Read from all registers in the <i>Register Map</i> summary and display the current state of the hardware.
Load Configuration button	Load a configuration file from disk and register address and data values in the file.
Save Configuration button	Save a configuration file to disk that contains the current state of the configuration registers.
Register Data cluster	Manipulate individual accessible bits of the register highlighted in the register map summary.
Individual register cluster with read or write register buttons	Perform a generic read or write command to the device shown in the <i>Block</i> drop-down menu using the address and write data information.

Troubleshooting the TSW12D1620EVM-CVAL

Table A-1 lists some troubleshooting procedures.

Table A-1. Troubleshooting

Issue	Troubleshoot
General problems	<ul style="list-style-type: none"> • Verify the test setup illustrated in Figure 2-1, and repeat the setup procedure as described in this document. • Check the power supply to the EVM and TSW14DL3200EVM. Verify that the power switch is in the on position. • Check the signal and clock connections to the EVM. • Visually check the top and bottom sides of the board to verify that nothing looks discolored or damaged. • Make sure the board-to-board FMC connection is secure. • After changing the ADC configuration, click <i>Instrument Options</i> → <i>Download Firmware</i> and download <i>TSW14DL3200_FIRMWARE_COMPONENT_MODE_800M.bin</i>. • Power cycle the external power supply to the EVM, and reprogram the LMK and ADC devices.
TSW14DL3200EVM LEDs are not correct	<ul style="list-style-type: none"> • Verify the installed jumpers on the TSW14DL3200EVM. • Verify that the clock going to the CLK input is connected and the appropriate LEDs are blinking. • Verify that the ADC device internal registers are configured properly. • If the LEDs are not blinking, reprogram the ADC EVM devices. • Click <i>Instrument Options</i> → <i>Download Firmware</i> and download <i>TSW14DL3200_FIRMWARE_COMPONENT_MODE_800M.bin</i>.
Configuration GUI is not working properly	<ul style="list-style-type: none"> • Verify that the USB cable is plugged into the EVM and the PC. • Check the computer device manager and verify that a <i>USB serial device</i> is recognized when the EVM is connected to the PC. • Verify that the green <i>USB Status</i> LED light in the top right corner of the GUI is lit. If not lit, click the Reconnect FTDI button. • Close and start the configuration GUI.
Configuration GUI is not able to connect to the EVM	<ul style="list-style-type: none"> • Use the free FT_PROG software from FTDI chip and verify that the onboard FTDI chip is programmed with the product description <i>TSW12D1620EVM</i>.
HSDC Pro software is not capturing good data or analysis results are incorrect	<ul style="list-style-type: none"> • Verify that the TSW14DL3200EVM is properly connected to the PC with a mini USB 3.0 cable and that the board serial number is properly identified by the HSDC software. • Check that the proper ADC device mode is selected. The mode must match in HSDC Pro and the ADC GUI. • Check that the analysis parameters are properly configured.
HSDC Pro software gives a time-out error when capturing data	<ul style="list-style-type: none"> • Verify that the ADC sampling rate is correctly set in the HSDC software. • Select <i>Instrument Options</i> → <i>Download Firmware</i> and download <i>TSW14DL3200_FIRMWARE_COMPONENT_MODE_800M.bin</i>. Try to capture again.
Suboptimal measured performance	<ul style="list-style-type: none"> • Click the Cal Triggered/Running button two times to calibrate the ADC in the current operating conditions. The button is located on the <i>Control</i> tab of the configuration GUI. • Check that the spectral analysis parameters are properly configured. • Verify that band-pass filters are used in the clock and input signal paths and that low-noise signal sources are used.

Revision History

NOTE: Page numbers for previous revisions may differ from page numbers in the current version.

Changes from Original (January 2019) to A Revision	Page
• Changed <i>TSW12D1620 Evaluation Module</i> figure to show MSP430FR5969-SP placement.....	4

STANDARD TERMS FOR EVALUATION MODULES

1. *Delivery:* TI delivers TI evaluation boards, kits, or modules, including any accompanying demonstration software, components, and/or documentation which may be provided together or separately (collectively, an "EVM" or "EVMs") to the User ("User") in accordance with the terms set forth herein. User's acceptance of the EVM is expressly subject to the following terms.
 - 1.1 EVMs are intended solely for product or software developers for use in a research and development setting to facilitate feasibility evaluation, experimentation, or scientific analysis of TI semiconductor products. EVMs have no direct function and are not finished products. EVMs shall not be directly or indirectly assembled as a part or subassembly in any finished product. For clarification, any software or software tools provided with the EVM ("Software") shall not be subject to the terms and conditions set forth herein but rather shall be subject to the applicable terms that accompany such Software
 - 1.2 EVMs are not intended for consumer or household use. EVMs may not be sold, sublicensed, leased, rented, loaned, assigned, or otherwise distributed for commercial purposes by Users, in whole or in part, or used in any finished product or production system.
2. *Limited Warranty and Related Remedies/Disclaimers:*
 - 2.1 These terms do not apply to Software. The warranty, if any, for Software is covered in the applicable Software License Agreement.
 - 2.2 TI warrants that the TI EVM will conform to TI's published specifications for ninety (90) days after the date TI delivers such EVM to User. Notwithstanding the foregoing, TI shall not be liable for a nonconforming EVM if (a) the nonconformity was caused by neglect, misuse or mistreatment by an entity other than TI, including improper installation or testing, or for any EVMs that have been altered or modified in any way by an entity other than TI, (b) the nonconformity resulted from User's design, specifications or instructions for such EVMs or improper system design, or (c) User has not paid on time. Testing and other quality control techniques are used to the extent TI deems necessary. TI does not test all parameters of each EVM. User's claims against TI under this Section 2 are void if User fails to notify TI of any apparent defects in the EVMs within ten (10) business days after delivery, or of any hidden defects with ten (10) business days after the defect has been detected.
 - 2.3 TI's sole liability shall be at its option to repair or replace EVMs that fail to conform to the warranty set forth above, or credit User's account for such EVM. TI's liability under this warranty shall be limited to EVMs that are returned during the warranty period to the address designated by TI and that are determined by TI not to conform to such warranty. If TI elects to repair or replace such EVM, TI shall have a reasonable time to repair such EVM or provide replacements. Repaired EVMs shall be warranted for the remainder of the original warranty period. Replaced EVMs shall be warranted for a new full ninety (90) day warranty period.

WARNING

Evaluation Kits are intended solely for use by technically qualified, professional electronics experts who are familiar with the dangers and application risks associated with handling electrical mechanical components, systems, and subsystems.

User shall operate the Evaluation Kit within TI's recommended guidelines and any applicable legal or environmental requirements as well as reasonable and customary safeguards. Failure to set up and/or operate the Evaluation Kit within TI's recommended guidelines may result in personal injury or death or property damage. Proper set up entails following TI's instructions for electrical ratings of interface circuits such as input, output and electrical loads.

NOTE:

EXPOSURE TO ELECTROSTATIC DISCHARGE (ESD) MAY CAUSE DEGRADATION OR FAILURE OF THE EVALUATION KIT; TI RECOMMENDS STORAGE OF THE EVALUATION KIT IN A PROTECTIVE ESD BAG.

3 Regulatory Notices:

3.1 United States

3.1.1 Notice applicable to EVMs not FCC-Approved:

FCC NOTICE: This kit is designed to allow product developers to evaluate electronic components, circuitry, or software associated with the kit to determine whether to incorporate such items in a finished product and software developers to write software applications for use with the end product. This kit is not a finished product and when assembled may not be resold or otherwise marketed unless all required FCC equipment authorizations are first obtained. Operation is subject to the condition that this product not cause harmful interference to licensed radio stations and that this product accept harmful interference. Unless the assembled kit is designed to operate under part 15, part 18 or part 95 of this chapter, the operator of the kit must operate under the authority of an FCC license holder or must secure an experimental authorization under part 5 of this chapter.

3.1.2 For EVMs annotated as FCC – FEDERAL COMMUNICATIONS COMMISSION Part 15 Compliant:

CAUTION

This device complies with part 15 of the FCC Rules. Operation is subject to the following two conditions: (1) This device may not cause harmful interference, and (2) this device must accept any interference received, including interference that may cause undesired operation.

Changes or modifications not expressly approved by the party responsible for compliance could void the user's authority to operate the equipment.

FCC Interference Statement for Class A EVM devices

NOTE: This equipment has been tested and found to comply with the limits for a Class A digital device, pursuant to part 15 of the FCC Rules. These limits are designed to provide reasonable protection against harmful interference when the equipment is operated in a commercial environment. This equipment generates, uses, and can radiate radio frequency energy and, if not installed and used in accordance with the instruction manual, may cause harmful interference to radio communications. Operation of this equipment in a residential area is likely to cause harmful interference in which case the user will be required to correct the interference at his own expense.

FCC Interference Statement for Class B EVM devices

NOTE: This equipment has been tested and found to comply with the limits for a Class B digital device, pursuant to part 15 of the FCC Rules. These limits are designed to provide reasonable protection against harmful interference in a residential installation. This equipment generates, uses and can radiate radio frequency energy and, if not installed and used in accordance with the instructions, may cause harmful interference to radio communications. However, there is no guarantee that interference will not occur in a particular installation. If this equipment does cause harmful interference to radio or television reception, which can be determined by turning the equipment off and on, the user is encouraged to try to correct the interference by one or more of the following measures:

- Reorient or relocate the receiving antenna.
- Increase the separation between the equipment and receiver.
- Connect the equipment into an outlet on a circuit different from that to which the receiver is connected.
- Consult the dealer or an experienced radio/TV technician for help.

3.2 Canada

3.2.1 For EVMs issued with an Industry Canada Certificate of Conformance to RSS-210 or RSS-247

Concerning EVMs Including Radio Transmitters:

This device complies with Industry Canada license-exempt RSSs. Operation is subject to the following two conditions:

(1) this device may not cause interference, and (2) this device must accept any interference, including interference that may cause undesired operation of the device.

Concernant les EVMs avec appareils radio:

Le présent appareil est conforme aux CNR d'Industrie Canada applicables aux appareils radio exempts de licence. L'exploitation est autorisée aux deux conditions suivantes: (1) l'appareil ne doit pas produire de brouillage, et (2) l'utilisateur de l'appareil doit accepter tout brouillage radioélectrique subi, même si le brouillage est susceptible d'en compromettre le fonctionnement.

Concerning EVMs Including Detachable Antennas:

Under Industry Canada regulations, this radio transmitter may only operate using an antenna of a type and maximum (or lesser) gain approved for the transmitter by Industry Canada. To reduce potential radio interference to other users, the antenna type and its gain should be so chosen that the equivalent isotropically radiated power (e.i.r.p.) is not more than that necessary for successful communication. This radio transmitter has been approved by Industry Canada to operate with the antenna types listed in the user guide with the maximum permissible gain and required antenna impedance for each antenna type indicated. Antenna types not included in this list, having a gain greater than the maximum gain indicated for that type, are strictly prohibited for use with this device.

Concernant les EVMs avec antennes détachables

Conformément à la réglementation d'Industrie Canada, le présent émetteur radio peut fonctionner avec une antenne d'un type et d'un gain maximal (ou inférieur) approuvé pour l'émetteur par Industrie Canada. Dans le but de réduire les risques de brouillage radioélectrique à l'intention des autres utilisateurs, il faut choisir le type d'antenne et son gain de sorte que la puissance isotrope rayonnée équivalente (p.i.r.e.) ne dépasse pas l'intensité nécessaire à l'établissement d'une communication satisfaisante. Le présent émetteur radio a été approuvé par Industrie Canada pour fonctionner avec les types d'antenne énumérés dans le manuel d'usage et ayant un gain admissible maximal et l'impédance requise pour chaque type d'antenne. Les types d'antenne non inclus dans cette liste, ou dont le gain est supérieur au gain maximal indiqué, sont strictement interdits pour l'exploitation de l'émetteur.

3.3 Japan

3.3.1 *Notice for EVMs delivered in Japan:* Please see http://www.tij.co.jp/lstds/ti_ja/general/eStore/notice_01.page 日本国内に輸入される評価用キット、ボードについては、次のところをご覧ください。
http://www.tij.co.jp/lstds/ti_ja/general/eStore/notice_01.page

3.3.2 *Notice for Users of EVMs Considered "Radio Frequency Products" in Japan:* EVMs entering Japan may not be certified by TI as conforming to Technical Regulations of Radio Law of Japan.

If User uses EVMs in Japan, not certified to Technical Regulations of Radio Law of Japan, User is required to follow the instructions set forth by Radio Law of Japan, which includes, but is not limited to, the instructions below with respect to EVMs (which for the avoidance of doubt are stated strictly for convenience and should be verified by User):

1. Use EVMs in a shielded room or any other test facility as defined in the notification #173 issued by Ministry of Internal Affairs and Communications on March 28, 2006, based on Sub-section 1.1 of Article 6 of the Ministry's Rule for Enforcement of Radio Law of Japan,
2. Use EVMs only after User obtains the license of Test Radio Station as provided in Radio Law of Japan with respect to EVMs, or
3. Use of EVMs only after User obtains the Technical Regulations Conformity Certification as provided in Radio Law of Japan with respect to EVMs. Also, do not transfer EVMs, unless User gives the same notice above to the transferee. Please note that if User does not follow the instructions above, User will be subject to penalties of Radio Law of Japan.

【無線電波を送信する製品の開発キットをお使いになる際の注意事項】 開発キットの中には技術基準適合証明を受けていないものがあります。技術適合証明を受けていないものご使用に際しては、電波法遵守のため、以下のいずれかの措置を取っていただく必要がありますのでご注意ください。

1. 電波法施行規則第6条第1項第1号に基づく平成18年3月28日総務省告示第173号で定められた電波暗室等の試験設備でご使用いただく。
2. 実験局の免許を取得後ご使用いただく。
3. 技術基準適合証明を取得後ご使用いただく。

なお、本製品は、上記の「ご使用にあたっての注意」を譲渡先、移転先に通知しない限り、譲渡、移転できないものとします。

上記を遵守頂けない場合は、電波法の罰則が適用される可能性があることをご留意ください。日本テキサス・インスツルメンツ株式会社
東京都新宿区西新宿 6 丁目 2 4 番 1 号
西新宿三井ビル

3.3.3 *Notice for EVMs for Power Line Communication:* Please see http://www.tij.co.jp/lstds/ti_ja/general/eStore/notice_02.page
電力線搬送波通信についての開発キットをお使いになる際の注意事項については、次のところをご覧ください。http://www.tij.co.jp/lstds/ti_ja/general/eStore/notice_02.page

3.4 European Union

3.4.1 *For EVMs subject to EU Directive 2014/30/EU (Electromagnetic Compatibility Directive):*

This is a class A product intended for use in environments other than domestic environments that are connected to a low-voltage power-supply network that supplies buildings used for domestic purposes. In a domestic environment this product may cause radio interference in which case the user may be required to take adequate measures.

-
- 4 *EVM Use Restrictions and Warnings:*
 - 4.1 EVMS ARE NOT FOR USE IN FUNCTIONAL SAFETY AND/OR SAFETY CRITICAL EVALUATIONS, INCLUDING BUT NOT LIMITED TO EVALUATIONS OF LIFE SUPPORT APPLICATIONS.
 - 4.2 User must read and apply the user guide and other available documentation provided by TI regarding the EVM prior to handling or using the EVM, including without limitation any warning or restriction notices. The notices contain important safety information related to, for example, temperatures and voltages.
 - 4.3 *Safety-Related Warnings and Restrictions:*
 - 4.3.1 User shall operate the EVM within TI's recommended specifications and environmental considerations stated in the user guide, other available documentation provided by TI, and any other applicable requirements and employ reasonable and customary safeguards. Exceeding the specified performance ratings and specifications (including but not limited to input and output voltage, current, power, and environmental ranges) for the EVM may cause personal injury or death, or property damage. If there are questions concerning performance ratings and specifications, User should contact a TI field representative prior to connecting interface electronics including input power and intended loads. Any loads applied outside of the specified output range may also result in unintended and/or inaccurate operation and/or possible permanent damage to the EVM and/or interface electronics. Please consult the EVM user guide prior to connecting any load to the EVM output. If there is uncertainty as to the load specification, please contact a TI field representative. During normal operation, even with the inputs and outputs kept within the specified allowable ranges, some circuit components may have elevated case temperatures. These components include but are not limited to linear regulators, switching transistors, pass transistors, current sense resistors, and heat sinks, which can be identified using the information in the associated documentation. When working with the EVM, please be aware that the EVM may become very warm.
 - 4.3.2 EVMs are intended solely for use by technically qualified, professional electronics experts who are familiar with the dangers and application risks associated with handling electrical mechanical components, systems, and subsystems. User assumes all responsibility and liability for proper and safe handling and use of the EVM by User or its employees, affiliates, contractors or designees. User assumes all responsibility and liability to ensure that any interfaces (electronic and/or mechanical) between the EVM and any human body are designed with suitable isolation and means to safely limit accessible leakage currents to minimize the risk of electrical shock hazard. User assumes all responsibility and liability for any improper or unsafe handling or use of the EVM by User or its employees, affiliates, contractors or designees.
 - 4.4 User assumes all responsibility and liability to determine whether the EVM is subject to any applicable international, federal, state, or local laws and regulations related to User's handling and use of the EVM and, if applicable, User assumes all responsibility and liability for compliance in all respects with such laws and regulations. User assumes all responsibility and liability for proper disposal and recycling of the EVM consistent with all applicable international, federal, state, and local requirements.
 5. *Accuracy of Information:* To the extent TI provides information on the availability and function of EVMs, TI attempts to be as accurate as possible. However, TI does not warrant the accuracy of EVM descriptions, EVM availability or other information on its websites as accurate, complete, reliable, current, or error-free.
 6. *Disclaimers:*
 - 6.1 EXCEPT AS SET FORTH ABOVE, EVMS AND ANY MATERIALS PROVIDED WITH THE EVM (INCLUDING, BUT NOT LIMITED TO, REFERENCE DESIGNS AND THE DESIGN OF THE EVM ITSELF) ARE PROVIDED "AS IS" AND "WITH ALL FAULTS." TI DISCLAIMS ALL OTHER WARRANTIES, EXPRESS OR IMPLIED, REGARDING SUCH ITEMS, INCLUDING BUT NOT LIMITED TO ANY EPIDEMIC FAILURE WARRANTY OR IMPLIED WARRANTIES OF MERCHANTABILITY OR FITNESS FOR A PARTICULAR PURPOSE OR NON-INFRINGEMENT OF ANY THIRD PARTY PATENTS, COPYRIGHTS, TRADE SECRETS OR OTHER INTELLECTUAL PROPERTY RIGHTS.
 - 6.2 EXCEPT FOR THE LIMITED RIGHT TO USE THE EVM SET FORTH HEREIN, NOTHING IN THESE TERMS SHALL BE CONSTRUED AS GRANTING OR CONFERRING ANY RIGHTS BY LICENSE, PATENT, OR ANY OTHER INDUSTRIAL OR INTELLECTUAL PROPERTY RIGHT OF TI, ITS SUPPLIERS/LICENSORS OR ANY OTHER THIRD PARTY, TO USE THE EVM IN ANY FINISHED END-USER OR READY-TO-USE FINAL PRODUCT, OR FOR ANY INVENTION, DISCOVERY OR IMPROVEMENT, REGARDLESS OF WHEN MADE, CONCEIVED OR ACQUIRED.
 7. *USER'S INDEMNITY OBLIGATIONS AND REPRESENTATIONS.* USER WILL DEFEND, INDEMNIFY AND HOLD TI, ITS LICENSORS AND THEIR REPRESENTATIVES HARMLESS FROM AND AGAINST ANY AND ALL CLAIMS, DAMAGES, LOSSES, EXPENSES, COSTS AND LIABILITIES (COLLECTIVELY, "CLAIMS") ARISING OUT OF OR IN CONNECTION WITH ANY HANDLING OR USE OF THE EVM THAT IS NOT IN ACCORDANCE WITH THESE TERMS. THIS OBLIGATION SHALL APPLY WHETHER CLAIMS ARISE UNDER STATUTE, REGULATION, OR THE LAW OF TORT, CONTRACT OR ANY OTHER LEGAL THEORY, AND EVEN IF THE EVM FAILS TO PERFORM AS DESCRIBED OR EXPECTED.
-

8. *Limitations on Damages and Liability:*

8.1 *General Limitations.* IN NO EVENT SHALL TI BE LIABLE FOR ANY SPECIAL, COLLATERAL, INDIRECT, PUNITIVE, INCIDENTAL, CONSEQUENTIAL, OR EXEMPLARY DAMAGES IN CONNECTION WITH OR ARISING OUT OF THESE TERMS OR THE USE OF THE EVMS , REGARDLESS OF WHETHER TI HAS BEEN ADVISED OF THE POSSIBILITY OF SUCH DAMAGES. EXCLUDED DAMAGES INCLUDE, BUT ARE NOT LIMITED TO, COST OF REMOVAL OR REINSTALLATION, ANCILLARY COSTS TO THE PROCUREMENT OF SUBSTITUTE GOODS OR SERVICES, RETESTING, OUTSIDE COMPUTER TIME, LABOR COSTS, LOSS OF GOODWILL, LOSS OF PROFITS, LOSS OF SAVINGS, LOSS OF USE, LOSS OF DATA, OR BUSINESS INTERRUPTION. NO CLAIM, SUIT OR ACTION SHALL BE BROUGHT AGAINST TI MORE THAN TWELVE (12) MONTHS AFTER THE EVENT THAT GAVE RISE TO THE CAUSE OF ACTION HAS OCCURRED.

8.2 *Specific Limitations.* IN NO EVENT SHALL TI'S AGGREGATE LIABILITY FROM ANY USE OF AN EVM PROVIDED HEREUNDER, INCLUDING FROM ANY WARRANTY, INDEMNITY OR OTHER OBLIGATION ARISING OUT OF OR IN CONNECTION WITH THESE TERMS, , EXCEED THE TOTAL AMOUNT PAID TO TI BY USER FOR THE PARTICULAR EVM(S) AT ISSUE DURING THE PRIOR TWELVE (12) MONTHS WITH RESPECT TO WHICH LOSSES OR DAMAGES ARE CLAIMED. THE EXISTENCE OF MORE THAN ONE CLAIM SHALL NOT ENLARGE OR EXTEND THIS LIMIT.

9. *Return Policy.* Except as otherwise provided, TI does not offer any refunds, returns, or exchanges. Furthermore, no return of EVM(s) will be accepted if the package has been opened and no return of the EVM(s) will be accepted if they are damaged or otherwise not in a resalable condition. If User feels it has been incorrectly charged for the EVM(s) it ordered or that delivery violates the applicable order, User should contact TI. All refunds will be made in full within thirty (30) working days from the return of the components(s), excluding any postage or packaging costs.

10. *Governing Law:* These terms and conditions shall be governed by and interpreted in accordance with the laws of the State of Texas, without reference to conflict-of-laws principles. User agrees that non-exclusive jurisdiction for any dispute arising out of or relating to these terms and conditions lies within courts located in the State of Texas and consents to venue in Dallas County, Texas. Notwithstanding the foregoing, any judgment may be enforced in any United States or foreign court, and TI may seek injunctive relief in any United States or foreign court.

Mailing Address: Texas Instruments, Post Office Box 655303, Dallas, Texas 75265
Copyright © 2019, Texas Instruments Incorporated

IMPORTANT NOTICE AND DISCLAIMER

TI PROVIDES TECHNICAL AND RELIABILITY DATA (INCLUDING DATASHEETS), DESIGN RESOURCES (INCLUDING REFERENCE DESIGNS), APPLICATION OR OTHER DESIGN ADVICE, WEB TOOLS, SAFETY INFORMATION, AND OTHER RESOURCES "AS IS" AND WITH ALL FAULTS, AND DISCLAIMS ALL WARRANTIES, EXPRESS AND IMPLIED, INCLUDING WITHOUT LIMITATION ANY IMPLIED WARRANTIES OF MERCHANTABILITY, FITNESS FOR A PARTICULAR PURPOSE OR NON-INFRINGEMENT OF THIRD PARTY INTELLECTUAL PROPERTY RIGHTS.

These resources are intended for skilled developers designing with TI products. You are solely responsible for (1) selecting the appropriate TI products for your application, (2) designing, validating and testing your application, and (3) ensuring your application meets applicable standards, and any other safety, security, or other requirements. These resources are subject to change without notice. TI grants you permission to use these resources only for development of an application that uses the TI products described in the resource. Other reproduction and display of these resources is prohibited. No license is granted to any other TI intellectual property right or to any third party intellectual property right. TI disclaims responsibility for, and you will fully indemnify TI and its representatives against, any claims, damages, costs, losses, and liabilities arising out of your use of these resources.

TI's products are provided subject to TI's Terms of Sale (www.ti.com/legal/termsofsale.html) or other applicable terms available either on ti.com or provided in conjunction with such TI products. TI's provision of these resources does not expand or otherwise alter TI's applicable warranties or warranty disclaimers for TI products.

Mailing Address: Texas Instruments, Post Office Box 655303, Dallas, Texas 75265
Copyright © 2019, Texas Instruments Incorporated