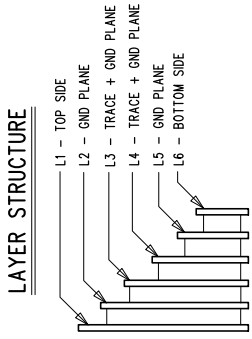
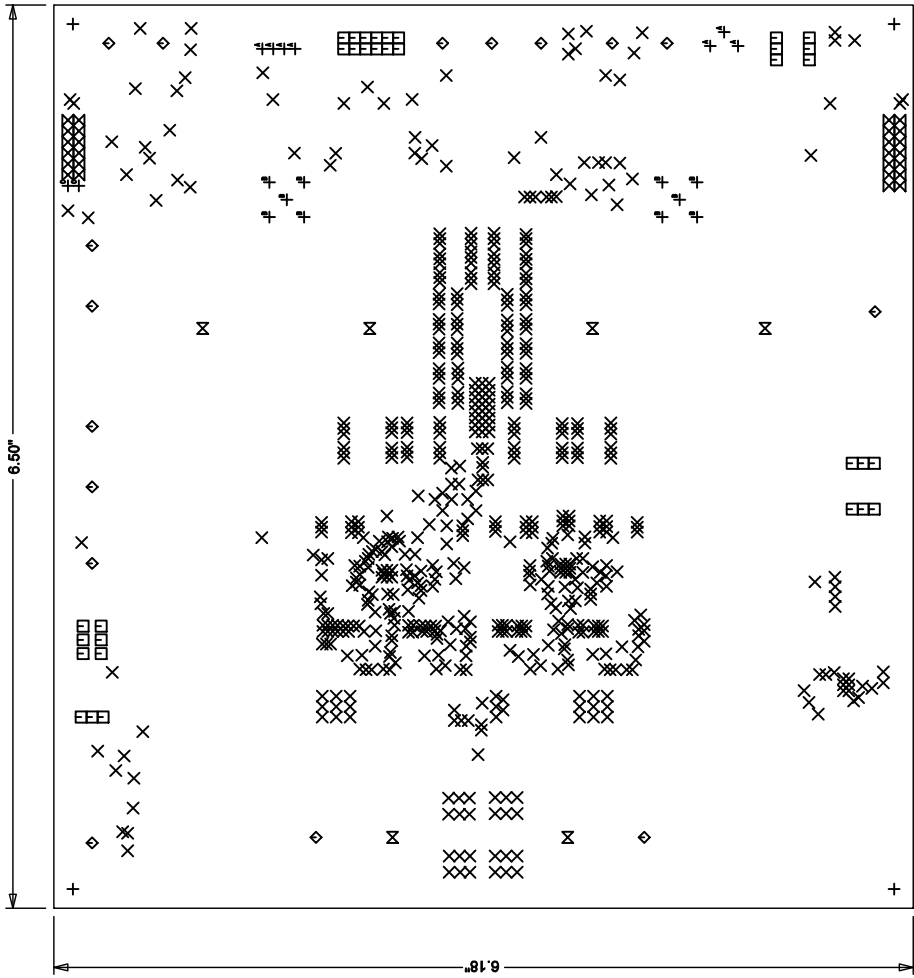
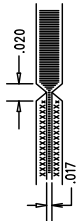


REVISION HISTORY		
ECO	REV	DESCRIPTION
-	1	PRODUCTION
		APP. ENG.
		YL
		DATE
		8-7-17



NOTES: UNLESS OTHERWISE SPECIFIED

1. FAB PER IPC-A-600.
2. MATERIAL: -LEAD FREE ASSEMBLY COMPLIANT, ISOLA FR-370HR OR EQUIVALENT.
 - FINISHED THICKNESS TO BE 0.062" +/- .005"
 - TOTAL OF 6 LAYERS WITH 2 OZ. CU ON THE OUTER AND THE INNER LAYERS.
 - FLAMMABILITY RATING: 94 V-0 MINIMUM.
3. SIZE: CUT TO DIMENSIONS AND TOLERANCES SHOWN. 0.00 ARE PRIMARY DATUMS.
4. DRILLING: -DRILL HOLES PER SCHEDULE PLATE THROUGH HOLES WITH COPPER, .000" THICK MIN.
 - ALL HOLE SIZES ARE SPECIFIED AFTER PLATING.
 - HOLE LOCATION TOLERANCES ARE +/-0.003" IN RELATION TO CENTER
5. FINISH: -SMOBC USING LPI BOTH SIDES; COLOR GREEN.
 - GOLD IMMERSION BOTH SIDES.
 - FOR SILKSCREENS: USE WHITE NON-CONDUCTIVE INK.
6. DO NOT ALTER ARTWORK e.g. TO ADD LOGO OR DATE CODE.
7. DESIGN HAS SOLDER MASK DEFINED PADS ON U1.
 - U1 SOLDER MASK SIZE IS 25 MIL AND PAD SIZE IS 29 MIL.
 - DON'T CHANGE PAD SIZE OR SOLDER MASK SIZE.
8. PCBs ARE TO BE RoHS COMPLIANT.
9. SCORING FOR PANELIZED PCB:



SIZE	QTY	SYM	PLATED	TOL
0.18701	4	+	N0	+/-0.003
0.01	623	X	YES	+/-0.003
0.03937	33	□	YES	+/-0.003
0.09528	16	◇	YES	+/-0.003
0.037	26	⊗	YES	+/-0.003
0.19528	6	⊗	YES	+/-0.003
0.03543	7	⊕	YES	+/-0.003
0.055	10	⊕	YES	+/-0.003
0.0315	2	⊕	YES	+/-0.003

UNLESS OTHERWISE SPECIFIED
DIMENSIONS ARE IN INCHES
TOLERANCES:
0.XX" = ±0.01"
0.XXX" = ±0.005"
INTERPRET DIM AND TOL
PER ASME Y14.5M-1994
THIRD ANGLE PROJECTION

APPROVALS

PCB DES.	HZ
APP. ENG.	YL

TITLE: FABRICATION DRAWING
HIGH EFFICIENCY, POLY-PHASE SYNCHRONOUS BUCK
CONVERTER WITH POWER SYSTEM MANAGEMENT

SIZE	IC NO. LTC3884-1	REV
N/A	DEM0 CIRCUIT 2605A	2

SCALE = NONE

850 MCCARTHY BLVD
SUITE 100
FARMINGTON, CT 06030
TEL: (860) 642-1000
WWW.LINEARTECH.COM
FOR CUSTOMER USE ONLY

LINEAR
TECHNOLOGY

FILENAME: DC2605A-2.PCB

SHEET 1 OF 1