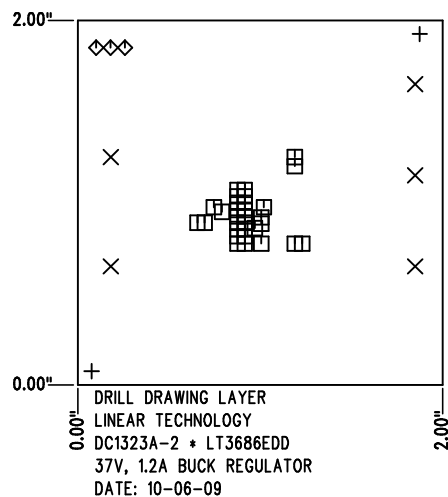
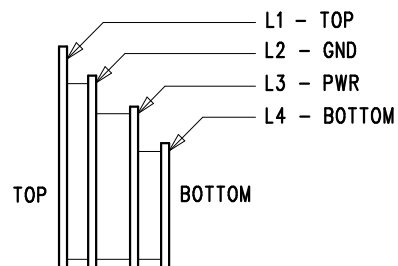


REVISION HISTORY				
ECO	REV	DESCRIPTION	APPR	DATE
1	2	PRODUCTION	T. ZHOU	10-06-09

SHOWN FROM COMPONENT SIDE



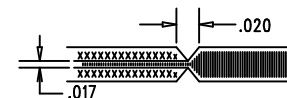
LAYER STRUCTURE


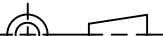


SIZE	QTY	SYM	PLATED	TOL
0.07	2	+	NO	+/-0.003"
0.094	5	×	YES	+/-0.003"
0.012	31	□	YES	+/-0.003"
0.035	3	◇	YES	+/-0.003"

NOTES: UNLESS OTHERWISE SPECIFIED

- FAB PER IPC-A-600.
- MATERIAL: -EPOXY FIBERGLASS, NEMA GRADE FR-4
-FINISHED THICKNESS TO BE 0.062" +/- .005"
-TOTAL OF 4 LAYERS WITH 2 OZ. CU ON THE OUTER LAYERS AND 1 OZ. CU ON THE INNER LAYERS.
-FLAMMABILITY RATING: 94 V-0 MINIMUM.
- SIZE: CUT TO DIMENSIONS AND TOLERANCES SHOWN. 0.00" ARE PRIMARY DATUMS.
- DRILLING: -DRILL HOLES PER SCHEDULE. PLATE THROUGH HOLES WITH COPPER, 0.001" THICK MIN.
-ALL HOLE SIZES ARE SPECIFIED AFTER PLATING.
-HOLE LOCATION TOLERANCES ARE +/-0.003" IN RELATION TO CENTER
- FINISH: -SMOBC USING LPI BOTH SIDES, COLOR GREEN.
-GOLD IMMERSION BOTH SIDES.
(LEAD FREE SOLDER CAN BE USED FOR PROTOTYPE)
-FOR SILKSCREEN: BOTH SIDES USE WHITE NON-CONDUCTIVE INK.
- DO NOT ALTER ARTWORK e.g. TO ADD LOGO OR DATE CODE.
PAD SIZE CAN BE MODIFIED TO MEET END FINISH.
- PCBS ARE TO BE RoHS COMPLIANT.
- SCORING FOR PANELIZED PCB:



UNLESS OTHERWISE SPECIFIED DIMENSIONS ARE IN INCHES TOLERANCES ON ANGLE ±1° 0.XX" = ±0.01" 0.XXX" = ±0.005" INTERPRET DIM AND TOL PER ASME Y14.5M-1994	APPROVALS			 LINEAR TECHNOLOGY 1630 MCCARTHY BLVD MILPITAS, CA 95035 PH: (408)432-1900 LTC CONFIDENTIAL- FOR CUSTOMER USE ONLY			
		INIT	DATE				
	PCB DES.	K. TRAN	10-06-09	TITLE: FABRICATION DRAWING			
	ENG.	T. ZHOU	10-06-09				
THIRD ANGLE PROJECTION				37V, 1.2A BUCK REGULATOR			
				SIZE	IC NO.	LT3686EDD	REV.
				A		DEMO CIRCUIT 1323A	2
DO NOT SCALE DRAWING	SCALE: NONE			FILENAME:		DC1323A-2.PCB	SHT 1 of 1