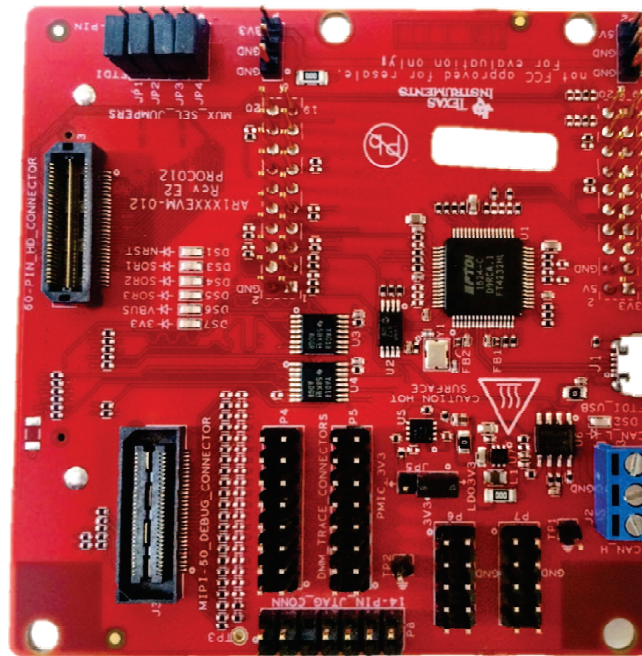


# MMWAVE-DEVPACK



**MMWAVE-DEVPACK**

## Contents

1	Getting Started .....	3
1.1	Introduction .....	3
1.2	Kit Contents.....	3
2	Hardware.....	4
2.1	Block Diagram.....	6
2.2	Connecting the mmwave Sensor BoosterPack to the DevPack.....	6
2.3	Power Connections .....	7
2.4	Connectors .....	8
2.5	PC Connection.....	10
2.6	Jumpers and LEDs .....	11
2.7	Design Files and Software Tools.....	12
3	Interfacing With Other Platforms .....	12
3.1	Radar Studio Interface.....	12
3.2	Interfacing With the High-Speed Data Capture Platform: TSW1400 EVM .....	14

## List of Figures

1	EVM Front View.....	4
2	EVM Rear View .....	5
3	Block Diagram.....	6

## MMWAVE-DEVPACK (continued)

4	Example BoosterPack Connection with DevPack .....	7
5	VBUS LED (DS6) and 3V3 LED (DS7) .....	7
6	20-Pin BoosterPack Connectors .....	8
7	60-Pin HD Connector .....	8
8	120-Pin TSW EVM Interface Connector .....	9
9	MIPI 60-Pin JTAG Connector .....	9
10	TI 14-Pin JTAG Connector .....	10
11	Uninstalled Devices .....	10
12	COM Ports After the Driver Installation .....	11
13	MUX Select Jumpers .....	11
14	LEDs .....	12
15	MUX Control Jumpers .....	13
16	Example DevPack–BoosterPack Connection .....	14
17	Device Manager .....	14
18	TSW1400 Connection – Front View .....	15
19	TSW1400 Connection – Rear View .....	15
20	Connecting the mmWave DevPack .....	16

## List of Tables

1	LEDs .....	12
---	------------	----

## Trademarks

Windows is a registered trademark of Microsoft Corporation.

## **1 Getting Started**

### **1.1 Introduction**

The MMWAVE-DEVPACK is an add-on board used with TI's mmwave sensor EVMs (1243BOOST, 1443BOOST, and 1642BOOST) to provide more interfaces and PC connectivity to the mmwave sensor EVM. It provides an interface for the Radar Studio tool to configure the Radar device and capture the raw ADC data using a capture card, such as the TSW1400.

Key features:

- 120-pin connector to interface with the TSW1400 EVM.
- 20-pin LaunchPad connectors for all the digital controls from the Radar EVM.
- 60-pin high-density (HD) connector for the high-speed ADC data over CSI or LVDS interface and emulator signals from the BoosterPack.
- Onboard FTDI chip to provide PC interface for SPI, GPIO controls, UART loggers.
- Powered over the micro USB connector.
- 60-pin MIPI connector for JTAG trace (for the 16xx device only).
- Header for DMM interface (for the 16xx device only).
- Second CAN connector (for the 16xx device only).

### **1.2 Kit Contents**

- MMWAVE-DEVPACK
- Micro USB cable to connect to PC.
- Samtec cable to connect the 60-pin high-density connectors of the DevPack and BoosterPack (PN HQCD-030-02.00-SEU-TBR-1).

2 Hardware

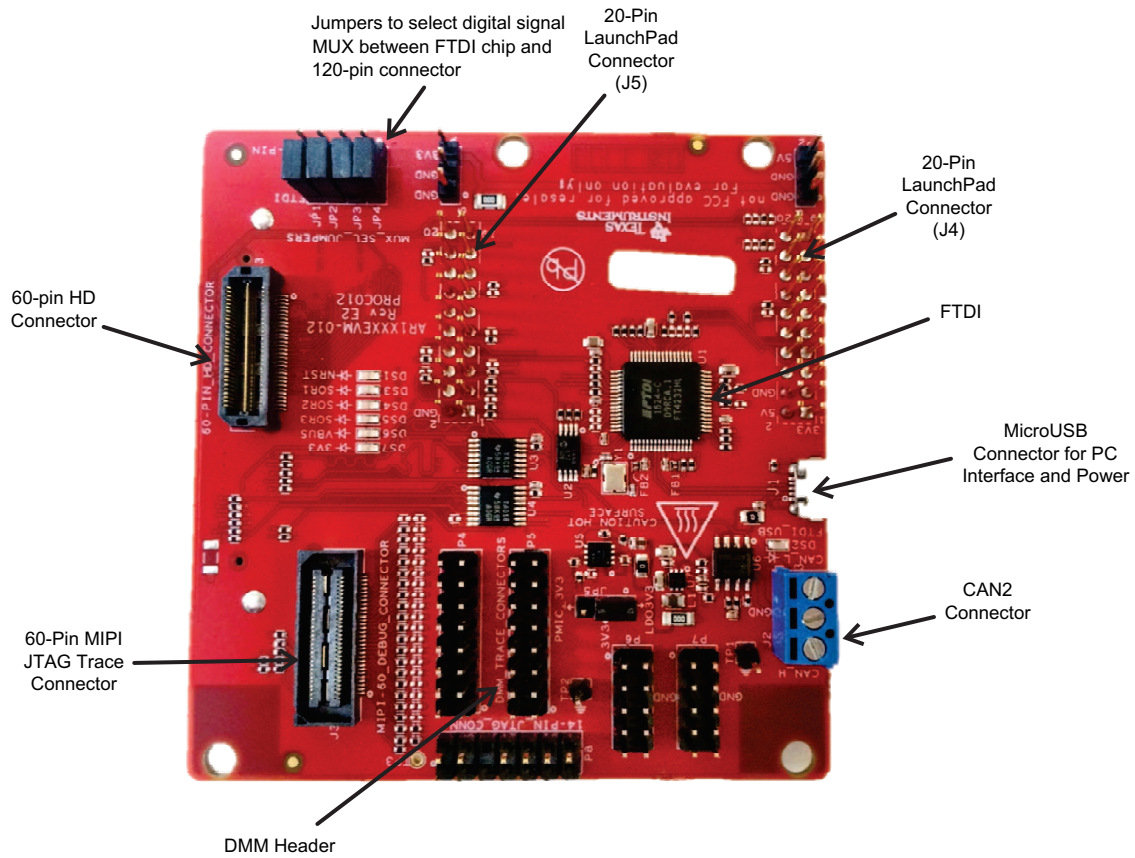
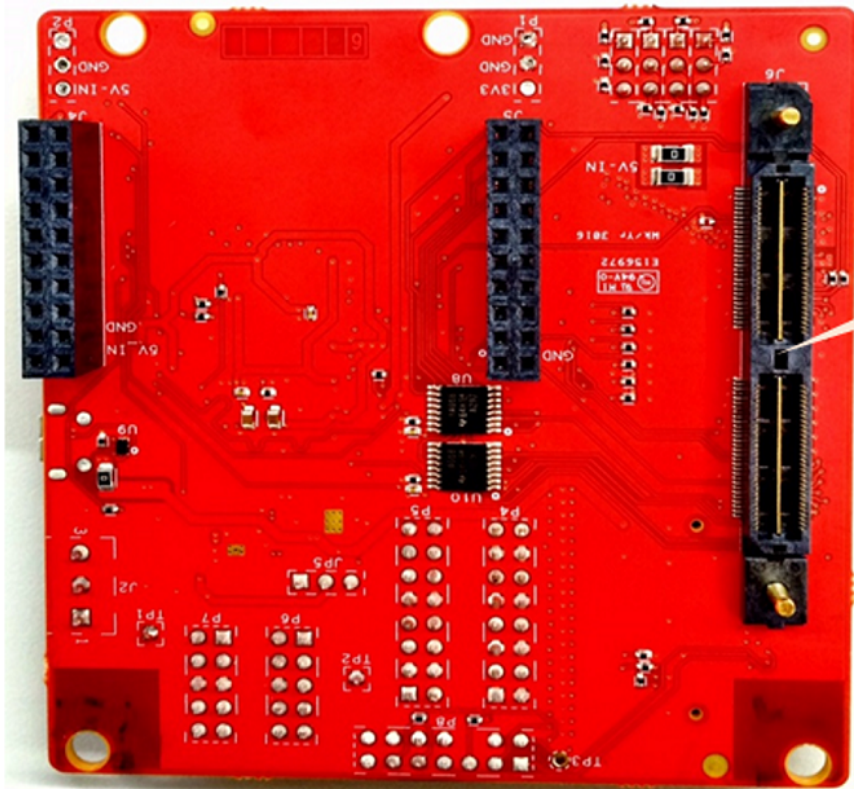


Figure 1. EVM Front View



120pin Samtec Connector  
for TSW1400 EMV interface

Figure 2. EVM Rear View

## 2.1 Block Diagram

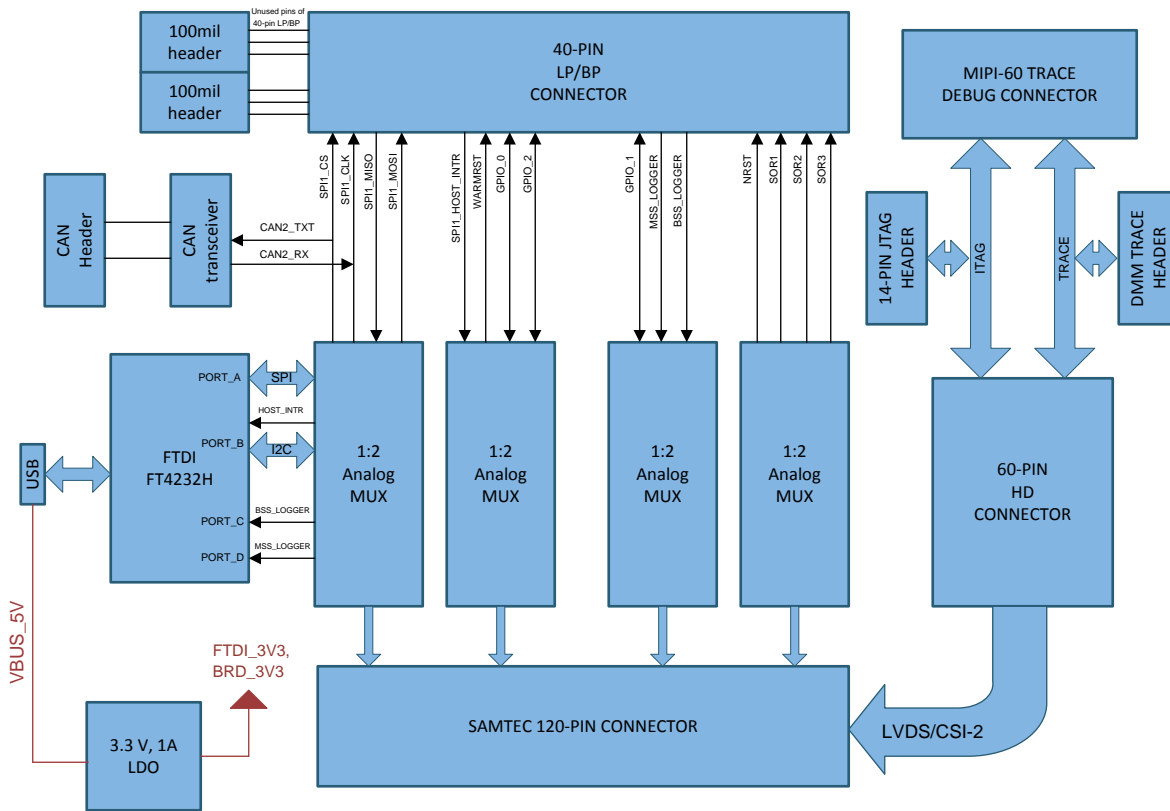


Figure 3. Block Diagram

## 2.2 Connecting the mmwave Sensor BoosterPack to the DevPack

The two boards connect directly over the 20-pin LaunchPad connectors, and the 60-pin HD connectors are connected using a separate Samtec cable (HQCD-030-02.00-SEU-TBR-1). The BoosterPack is always placed above the DevPack. The connectors do not have a key to prevent the misalignment of the pins or reverse connection. Thus, ensure that reverse mounting does not occur. While connecting the BoosterPack to DevPack, ensure the pin 1 orientation is correct by matching the 3V3 and 5-V signal marking on both the boards. [Figure 4](#) illustrates the connection orientation.

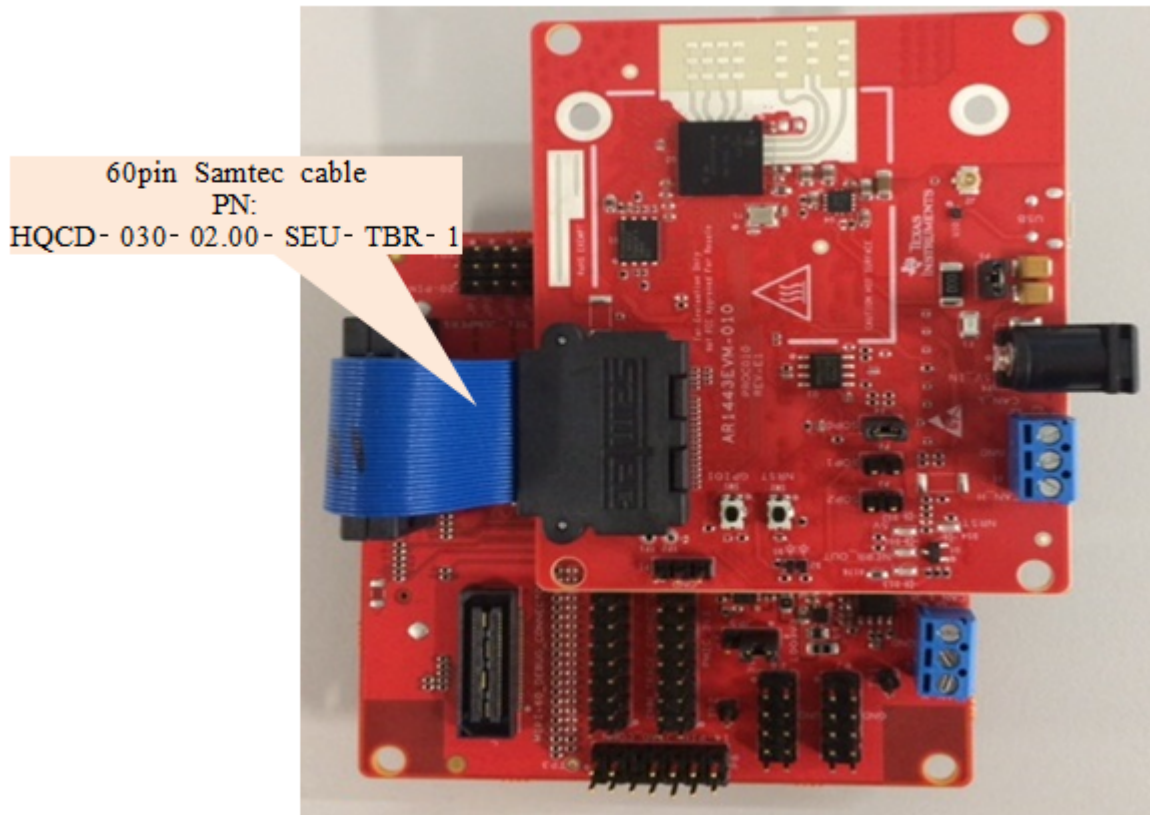


Figure 4. Example BoosterPack Connection with DevPack

### 2.3 Power Connections

The DevPack is powered by the micro USB cable. However, the onboard LDO is enabled only when the BoosterPack connected to the DevPack is powered. This is to prevent the DevPack from powering up before the BoosterPack. This is done by looking for 3.3 V on the PGOOD\_3V3 line available J4 connector, pin#14.

When the two boards are powered, the VBUS LED (DS6) and 3V3 LED (DS7) glow, as shown in Figure 5.



Figure 5. VBUS LED (DS6) and 3V3 LED (DS7)

## 2.4 Connectors

### 2.4.1 20-Pin BoosterPack Connectors (J5, J4)

The 20-pin BoosterPack connectors mate directly with the mmwave BoosterPack. The orientation of the boards while connected must be ensured by matching the 3V3 and 5-V pin markings on both the boards, as shown in [Figure 6](#).



**Figure 6. 20-Pin BoosterPack Connectors**

### 2.4.2 60-Pin High Density (HD) Connector (P3)

The 60-pin HD connector (see [Figure 7](#)) provides the high-speed CSI/LVDS data, controls signals (SPI, UART, I2C, NRST, NERR, and SOPs), and JTAG debug signals from the BoosterPack. The Trace and DMM interface lines are also available through this connector.



**Figure 7. 60-Pin HD Connector**



### 2.4.3 120-Pin High Density (HD) Connector (J6)

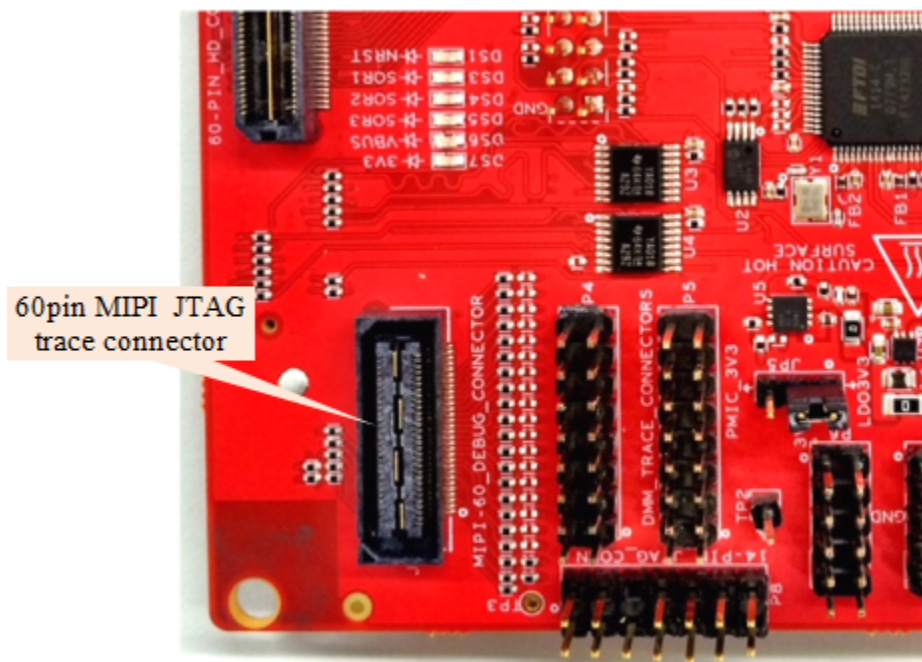
This connector enables interfacing the LVDS signals to the TSW1400 EVM or the CSI, and control signals to the central processor board, as shown in [Figure 8](#).



**Figure 8. 120-Pin TSW EVM Interface Connector**

### 2.4.4 MIPI 60-Pin JTAG Connector (J3)

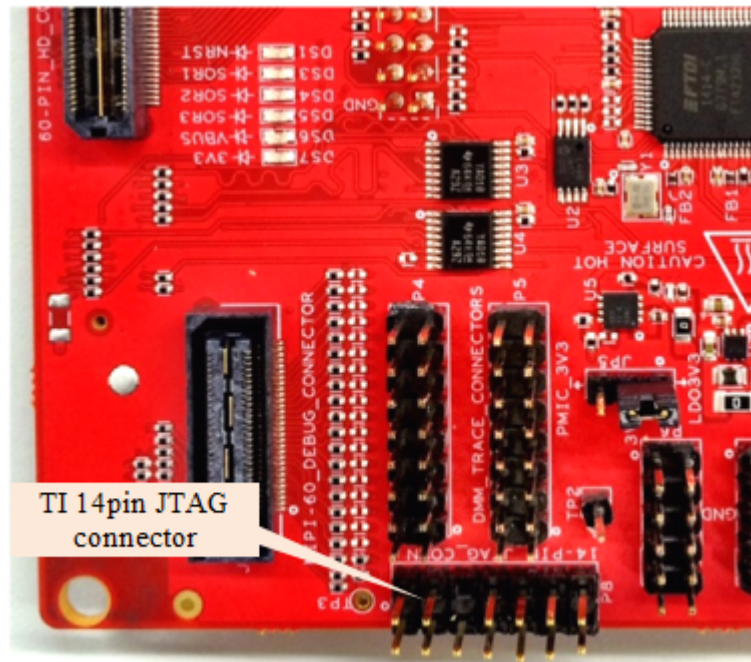
This connector provides the standard MIPI 60-pin interface for JTAG and trace capability (trace is available only on the 1642 device), through emulators such as the XDS560pro (see [Figure 9](#)). To use this interface, the JTAG lines to the onboard emulator (XDS110) on the mmwave BoosterPack must be disconnected. This is done by removing the resistors R69, R70, R71, and R30 from the mmwave BOOST boards.



**Figure 9. MIPI 60-Pin JTAG Connector**

### 2.4.5 TI 14-Pin JTAG Connector (P8)

This connector provides a JTAG interface for debug and development, through emulators such as the XDS100 (see [Figure 10](#)). To use this interface, the JTAG lines to the onboard emulator (XDS110) on the mmwave BoosterPack must be disconnected. This is done by removing the resistors R69, R70, R71, and R30 on the mmwave BoosterPacks.



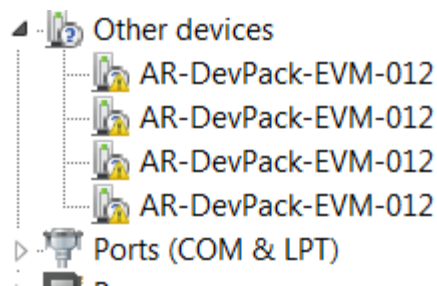
**Figure 10. TI 14-Pin JTAG Connector**

## 2.5 PC Connection

Connectivity is provided through the micro USB connector over the onboard FTDI IC. This provides the following interfaces to the PC:

- FTDI Port A -> SPI interface for radar device control using Radar Studio.
- FTDI Port B -> I2C interface and host INTR signal.
- FTDI Port C -> BSS Logger port (for internal debug only), Nrst control, and Nerror signals.
- FTDI Port D -> DSS Logger port (available only on 1642 device), SOP line control signals, and GPIO signals

When the USB is connected for the first time to the PC, Windows® maybe not be able to recognize the device. This is indicated in the device manager with yellow exclamation marks, as shown in [Figure 11](#).



**Figure 11. Uninstalled Devices**

To install the devices, download the latest FTDI drivers available in the [mmwave SDK package](#). Right-click on these devices, and update the drivers by pointing to the location where the FTDI drivers were downloaded. This must be done for all four COM ports. When all four COM ports are installed, the device manager recognizes these devices and indicates the COM port numbers, as shown in [Figure 12](#).

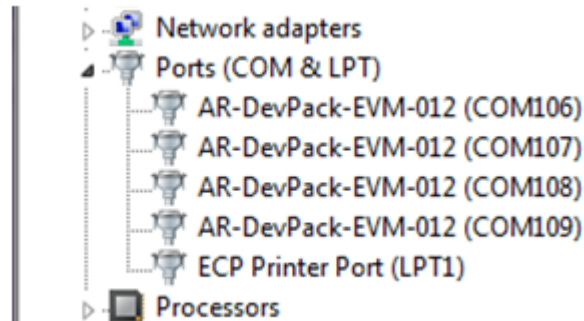


Figure 12. COM Ports After the Driver Installation

## 2.6 Jumpers and LEDs

### 2.6.1 MUX Select Jumpers

The digital signals such as SPI, INTR, nRST, GPIOs, and SOP controls, can either go to the FTDI chip (for control from the PC) or to the 120-pin connector (for processor connectivity such as the TDA3). These jumpers are shown in [Figure 13](#).

The jumper position of pin 2-3 connected selects the FTDI path.

The jumper position of pin 2-1 connected selects the 120-pin connector path.

JP1 -> selects the path for nRST and SOP signals.

JP2 -> selects the path for loggers and GPIO\_1 signals.

JP3 -> selects the path for INTR, warmrst, GPIO\_0, and GPIO\_2 signals.

JP4 -> selects the path for SPI signals.



Figure 13. MUX Select Jumpers

## 2.6.2 LEDs

Table 1 lists the details of the LEDs. Figure 14 shows the LEDs on the board.

**Table 1. LEDs**

Ref	Color	Usage
DS7	Red	3V3 supply indication
DS6	Red	5-V supply indication (from USB bus)
DS5	YELLOW	SOR3 (SOP0) state
DS4	YELLOW	SOR2 (SOP1) state
DS3	YELLOW	SOR1 (SOP2) state
DS1	YELLOW	NRST



**Figure 14. LEDs**

## 2.7 Design Files and Software Tools

### 2.7.1 Hardware

The schematics and assembly files can be found [here](#).

### 2.7.2 Required Software Tools

1. The latest mmwave SDK can be found [here](#).
2. The RF testing tool Radar Studio and its dependencies can be found as part of the [DFP package](#).

## 3 Interfacing With Other Platforms

### 3.1 Radar Studio Interface

To control the radar device from Radar Studio, both the mmwave BoosterPack and the DevPack must be powered and connected to the PC using the micro USB cable. The UART used to download the firmware is accessed from the XDS110 device on the mmwave BoosterPack. The SPI interface used to control the radar device, SOP controls, and nRST control is performed from the FTDI chip on the DevPack.

For details on the usage of Radar Studio, refer to the RadarStudio User's Guide.pdf, which is part of the DFP package.

### 3.1.1 Jumper Setting on DevPack

To mux all the digital controls to FTDI, the MUX control jumpers on the DevPack should be set as shown in [Figure 15](#) (all connecting pin 2-3).



Figure 15. MUX Control Jumpers

### 3.1.2 DevPack and BoosterPack Connections

Refer to [Section 2.2](#) for the connection details. The BoosterPack is powered by the 5-V supply. The micro USB cables for both the DevPack and the BoosterPack must be connected. Refer to [Figure 16](#).

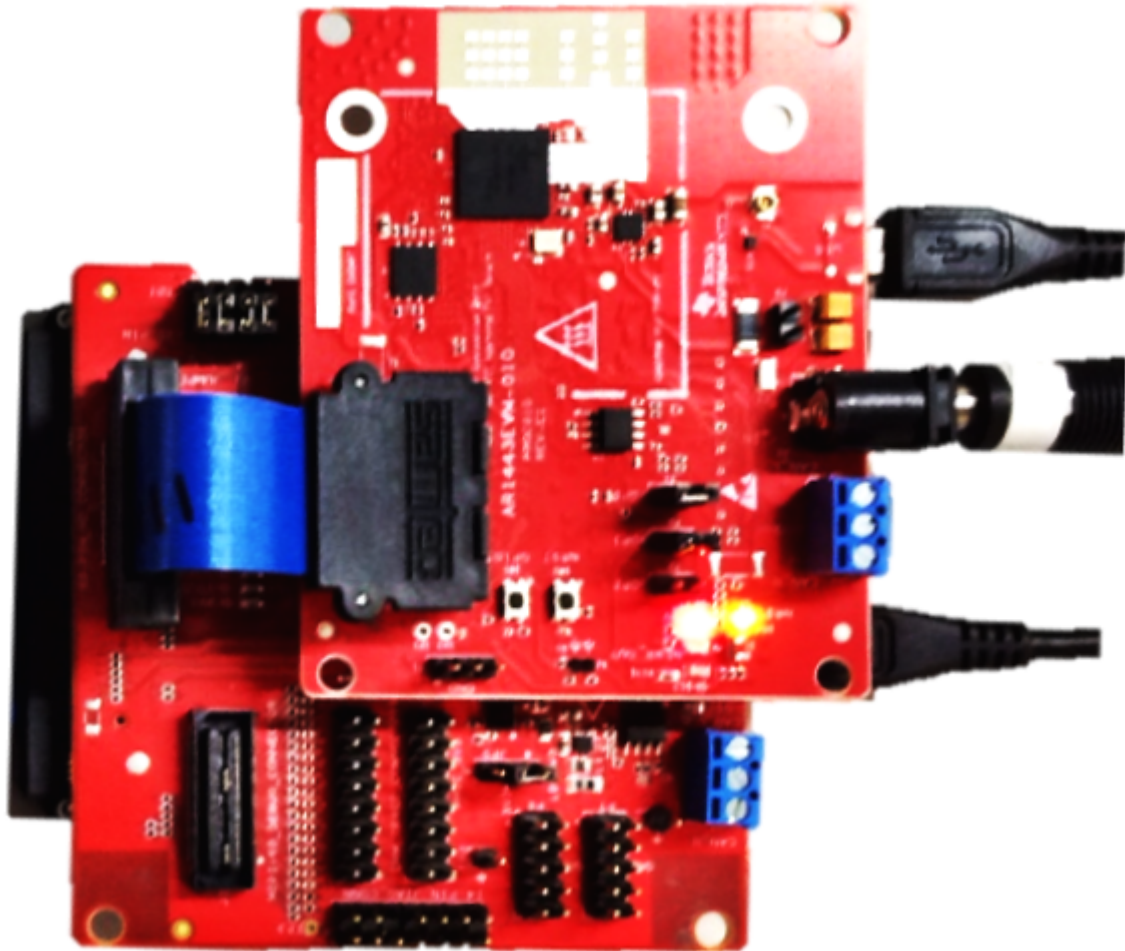


Figure 16. Example DevPack–BoosterPack Connection

### 3.1.3 COM Port Selection in Radar Studio

The RS232 COM port used in Radar Studio is indicated as XDS110 Class Application/User UART in the device manager, as shown in [Figure 17](#).

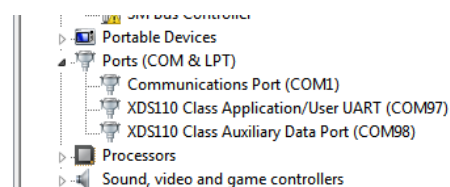


Figure 17. Device Manager

## 3.2 Interfacing With the High-Speed Data Capture Platform: TSW1400 EVM

The high-speed LVDS data from the radar device can be captured using the TSW1400. For more details on the TSW1400 EVM and ordering details, see the [High Speed Data Capture and Pattern Generation Platform](#). To configure this, TSW1400 HSDC Pro software and Radar Studio are required. For the installation and usage of the HSDC Pro tool, refer to the RadarStudio User's Guide.pdf, which is including in the DFP package.

### 3.2.1 DevPack and BoosterPack Configuration

The configuration of the DevPack and BoosterPack are the same as mentioned in [Section 3.1](#).

### 3.2.2 TSW1400 EVM Connection

The TSW1400 EVM must be powered up with a 5-V supply and the mini-USB cable connected to the same PC as the DevPack and BoosterPack. A 120-pin Samtec cable (HQCD-060-08.00-TBL-SBR-1-D) is used to connect the J6 120-pin connector on the DevPack to the J3 ADC input connector on the TSW1400 EVM. Refer to the setup images, [Figure 18](#) and [Figure 19](#). The "08.00" of the cable part number is the length of the cable in inches. The length can be increased accordingly, based on user need, when ordering the cable.

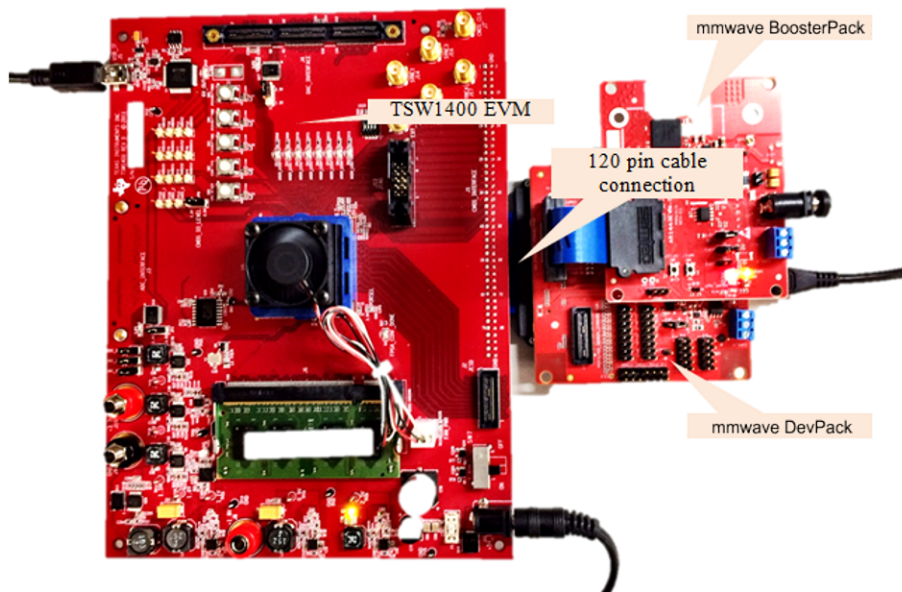


Figure 18. TSW1400 Connection – Front View

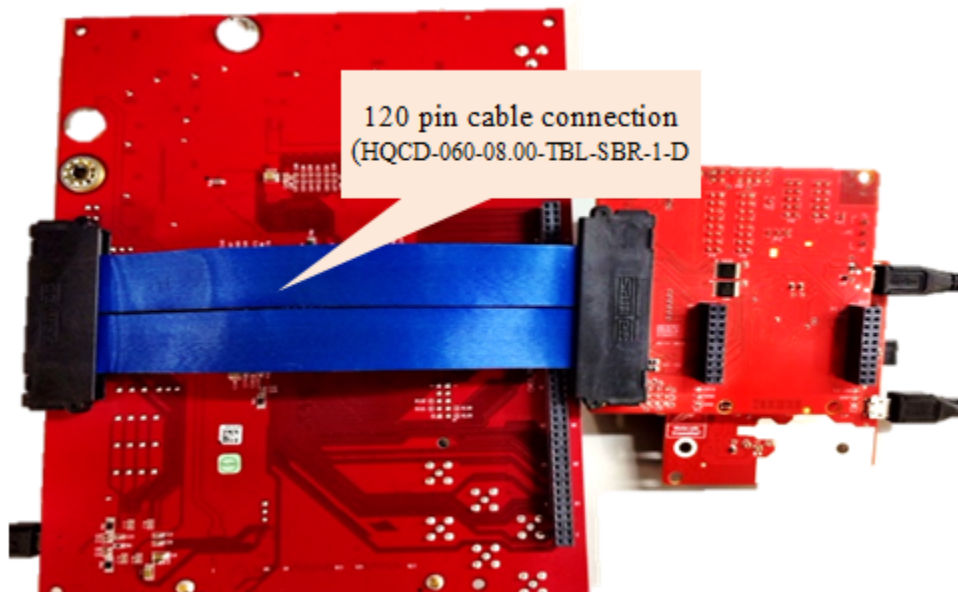
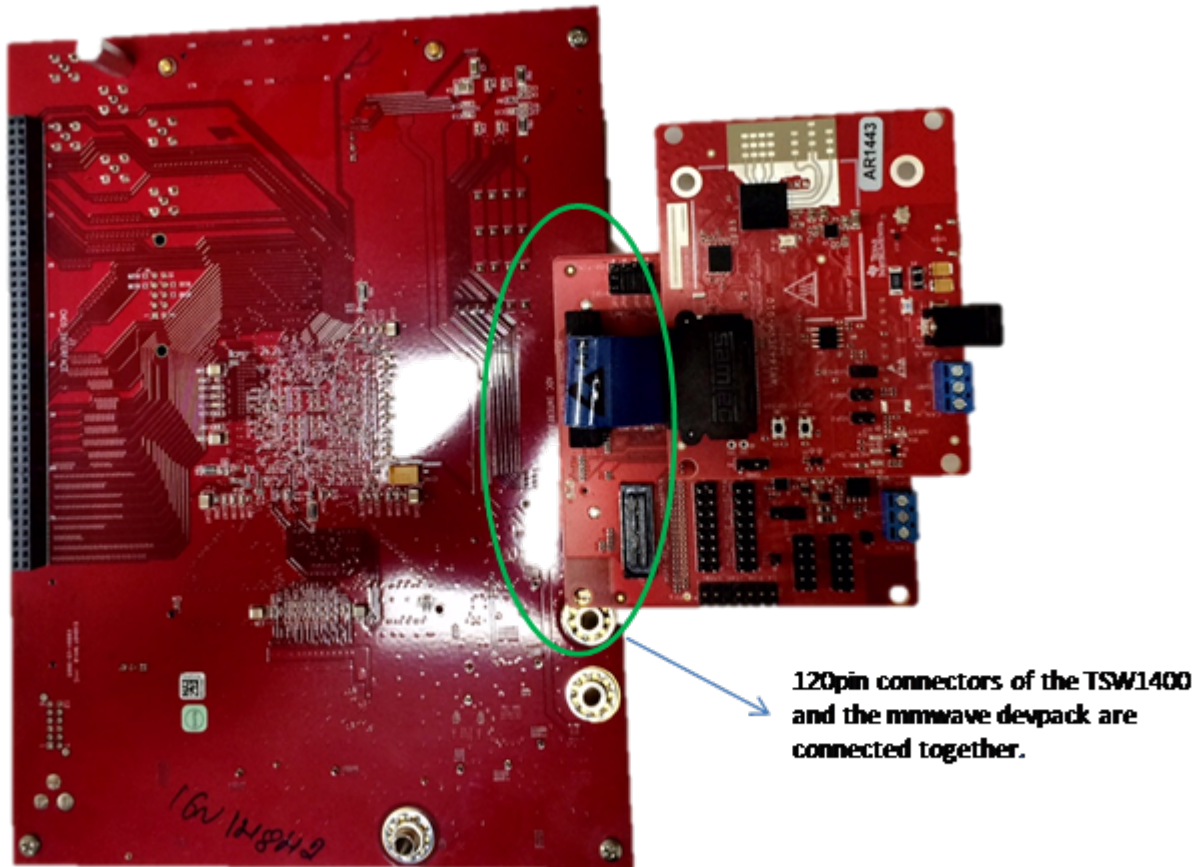


Figure 19. TSW1400 Connection – Rear View

If the user does not have the 120-pin Samtec cable, the mmwave dev pack can be directly connected to the TSW1400 board, as shown in [Figure 20](#). In this case, the user must ensure that all three boards are properly mechanically supported, to avoid stress on the 120-pin connector. Also, the user must ensure that the fan of the TSW1400 board does not touch anything.



**Figure 20. Connecting the mmWave DevPack**



## STANDARD TERMS FOR EVALUATION MODULES

1. **Delivery:** TI delivers TI evaluation boards, kits, or modules, including any accompanying demonstration software, components, and/or documentation which may be provided together or separately (collectively, an “EVM” or “EVMs”) to the User (“User”) in accordance with the terms set forth herein. User’s acceptance of the EVM is expressly subject to the following terms.
  - 1.1 EVMs are intended solely for product or software developers for use in a research and development setting to facilitate feasibility evaluation, experimentation, or scientific analysis of TI semiconductors products. EVMs have no direct function and are not finished products. EVMs shall not be directly or indirectly assembled as a part or subassembly in any finished product. For clarification, any software or software tools provided with the EVM (“Software”) shall not be subject to the terms and conditions set forth herein but rather shall be subject to the applicable terms that accompany such Software
  - 1.2 EVMs are not intended for consumer or household use. EVMs may not be sold, sublicensed, leased, rented, loaned, assigned, or otherwise distributed for commercial purposes by Users, in whole or in part, or used in any finished product or production system.
2. **Limited Warranty and Related Remedies/Disclaimers:**
  - 2.1 These terms do not apply to Software. The warranty, if any, for Software is covered in the applicable Software License Agreement.
  - 2.2 TI warrants that the TI EVM will conform to TI’s published specifications for ninety (90) days after the date TI delivers such EVM to User. Notwithstanding the foregoing, TI shall not be liable for a nonconforming EVM if (a) the nonconformity was caused by neglect, misuse or mistreatment by an entity other than TI, including improper installation or testing, or for any EVMs that have been altered or modified in any way by an entity other than TI, (b) the nonconformity resulted from User’s design, specifications or instructions for such EVMs or improper system design, or (c) User has not paid on time. Testing and other quality control techniques are used to the extent TI deems necessary. TI does not test all parameters of each EVM. User’s claims against TI under this Section 2 are void if User fails to notify TI of any apparent defects in the EVMs within ten (10) business days after delivery, or of any hidden defects with ten (10) business days after the defect has been detected.
  - 2.3 TI’s sole liability shall be at its option to repair or replace EVMs that fail to conform to the warranty set forth above, or credit User’s account for such EVM. TI’s liability under this warranty shall be limited to EVMs that are returned during the warranty period to the address designated by TI and that are determined by TI not to conform to such warranty. If TI elects to repair or replace such EVM, TI shall have a reasonable time to repair such EVM or provide replacements. Repaired EVMs shall be warranted for the remainder of the original warranty period. Replaced EVMs shall be warranted for a new full ninety (90) day warranty period.
3. **Regulatory Notices:**
  - 3.1 **United States**
    - 3.1.1 **Notice applicable to EVMs not FCC-Approved:**

**FCC NOTICE:** This kit is designed to allow product developers to evaluate electronic components, circuitry, or software associated with the kit to determine whether to incorporate such items in a finished product and software developers to write software applications for use with the end product. This kit is not a finished product and when assembled may not be resold or otherwise marketed unless all required FCC equipment authorizations are first obtained. Operation is subject to the condition that this product not cause harmful interference to licensed radio stations and that this product accept harmful interference. Unless the assembled kit is designed to operate under part 15, part 18 or part 95 of this chapter, the operator of the kit must operate under the authority of an FCC license holder or must secure an experimental authorization under part 5 of this chapter.
    - 3.1.2 *For EVMs annotated as FCC – FEDERAL COMMUNICATIONS COMMISSION Part 15 Compliant:*

### CAUTION

This device complies with part 15 of the FCC Rules. Operation is subject to the following two conditions: (1) This device may not cause harmful interference, and (2) this device must accept any interference received, including interference that may cause undesired operation.

Changes or modifications not expressly approved by the party responsible for compliance could void the user’s authority to operate the equipment.

### FCC Interference Statement for Class A EVM devices

*NOTE: This equipment has been tested and found to comply with the limits for a Class A digital device, pursuant to part 15 of the FCC Rules. These limits are designed to provide reasonable protection against harmful interference when the equipment is operated in a commercial environment. This equipment generates, uses, and can radiate radio frequency energy and, if not installed and used in accordance with the instruction manual, may cause harmful interference to radio communications. Operation of this equipment in a residential area is likely to cause harmful interference in which case the user will be required to correct the interference at his own expense.*

## STANDARD TERMS FOR EVALUATION MODULES (continued)

### FCC Interference Statement for Class B EVM devices

*NOTE: This equipment has been tested and found to comply with the limits for a Class B digital device, pursuant to part 15 of the FCC Rules. These limits are designed to provide reasonable protection against harmful interference in a residential installation. This equipment generates, uses and can radiate radio frequency energy and, if not installed and used in accordance with the instructions, may cause harmful interference to radio communications. However, there is no guarantee that interference will not occur in a particular installation. If this equipment does cause harmful interference to radio or television reception, which can be determined by turning the equipment off and on, the user is encouraged to try to correct the interference by one or more of the following measures:*

- Reorient or relocate the receiving antenna.
- Increase the separation between the equipment and receiver.
- Connect the equipment into an outlet on a circuit different from that to which the receiver is connected.
- Consult the dealer or an experienced radio/TV technician for help.

### 3.2 Canada

3.2.1 For EVMs issued with an Industry Canada Certificate of Conformance to RSS-210 or RSS-247

#### Concerning EVMs Including Radio Transmitters:

This device complies with Industry Canada license-exempt RSSs. Operation is subject to the following two conditions:

(1) this device may not cause interference, and (2) this device must accept any interference, including interference that may cause undesired operation of the device.

#### Concernant les EVMs avec appareils radio:

Le présent appareil est conforme aux CNR d'Industrie Canada applicables aux appareils radio exempts de licence. L'exploitation est autorisée aux deux conditions suivantes: (1) l'appareil ne doit pas produire de brouillage, et (2) l'utilisateur de l'appareil doit accepter tout brouillage radioélectrique subi, même si le brouillage est susceptible d'en compromettre le fonctionnement.

#### Concerning EVMs Including Detachable Antennas:

Under Industry Canada regulations, this radio transmitter may only operate using an antenna of a type and maximum (or lesser) gain approved for the transmitter by Industry Canada. To reduce potential radio interference to other users, the antenna type and its gain should be so chosen that the equivalent isotropically radiated power (e.i.r.p.) is not more than that necessary for successful communication. This radio transmitter has been approved by Industry Canada to operate with the antenna types listed in the user guide with the maximum permissible gain and required antenna impedance for each antenna type indicated. Antenna types not included in this list, having a gain greater than the maximum gain indicated for that type, are strictly prohibited for use with this device.

#### Concernant les EVMs avec antennes détachables

Conformément à la réglementation d'Industrie Canada, le présent émetteur radio peut fonctionner avec une antenne d'un type et d'un gain maximal (ou inférieur) approuvé pour l'émetteur par Industrie Canada. Dans le but de réduire les risques de brouillage radioélectrique à l'intention des autres utilisateurs, il faut choisir le type d'antenne et son gain de sorte que la puissance isotrope rayonnée équivalente (p.i.r.e.) ne dépasse pas l'intensité nécessaire à l'établissement d'une communication satisfaisante. Le présent émetteur radio a été approuvé par Industrie Canada pour fonctionner avec les types d'antenne énumérés dans le manuel d'usage et ayant un gain admissible maximal et l'impédance requise pour chaque type d'antenne. Les types d'antenne non inclus dans cette liste, ou dont le gain est supérieur au gain maximal indiqué, sont strictement interdits pour l'exploitation de l'émetteur.

### 3.3 Japan

3.3.1 *Notice for EVMs delivered in Japan:* Please see [http://www.tij.co.jp/llds/ti\\_ja/general/eStore/notice\\_01.page](http://www.tij.co.jp/llds/ti_ja/general/eStore/notice_01.page) 日本国内に輸入される評価用キット、ボードについては、次のところをご覧ください。  
[http://www.tij.co.jp/llds/ti\\_ja/general/eStore/notice\\_01.page](http://www.tij.co.jp/llds/ti_ja/general/eStore/notice_01.page)

3.3.2 *Notice for Users of EVMs Considered "Radio Frequency Products" in Japan:* EVMs entering Japan may not be certified by TI as conforming to Technical Regulations of Radio Law of Japan.

If User uses EVMs in Japan, not certified to Technical Regulations of Radio Law of Japan, User is required to follow the instructions set forth by Radio Law of Japan, which includes, but is not limited to, the instructions below with respect to EVMs (which for the avoidance of doubt are stated strictly for convenience and should be verified by User):

1. Use EVMs in a shielded room or any other test facility as defined in the notification #173 issued by Ministry of Internal Affairs and Communications on March 28, 2006, based on Sub-section 1.1 of Article 6 of the Ministry's Rule for Enforcement of Radio Law of Japan,
2. Use EVMs only after User obtains the license of Test Radio Station as provided in Radio Law of Japan with respect to EVMs, or
3. Use of EVMs only after User obtains the Technical Regulations Conformity Certification as provided in Radio Law of Japan with respect to EVMs. Also, do not transfer EVMs, unless User gives the same notice above to the transferee. Please note that if User does not follow the instructions above, User will be subject to penalties of Radio Law of Japan.

## STANDARD TERMS FOR EVALUATION MODULES (continued)

【無線電波を送信する製品の開発キットをお使いになる際の注意事項】 開発キットの中には技術基準適合証明を受けていないものがあります。技術適合証明を受けていないものご使用に際しては、電波法遵守のため、以下のいずれかの措置を取っていただく必要がありますのでご注意ください。

1. 電波法施行規則第6条第1項第1号に基づく平成18年3月28日総務省告示第173号で定められた電波暗室等の試験設備でご使用いただく。
2. 実験局の免許を取得後ご使用いただく。
3. 技術基準適合証明を取得後ご使用いただく。

なお、本製品は、上記の「ご使用にあたっての注意」を譲渡先、移転先に通知しない限り、譲渡、移転できないものとします。

上記を遵守頂けない場合は、電波法の罰則が適用される可能性があることをご留意ください。 日本テキサス・

インスツルメンツ株式会社  
東京都新宿区西新宿6丁目2番1号  
西新宿三井ビル

- 3.3.3 *Notice for EVMs for Power Line Communication:* Please see [http://www.tij.co.jp/lstds/ti\\_ja/general/eStore/notice\\_02.page](http://www.tij.co.jp/lstds/ti_ja/general/eStore/notice_02.page)

電力線搬送波通信についての開発キットをお使いになる際の注意事項については、次のところをご覧ください。  
[http://www.tij.co.jp/lstds/ti\\_ja/general/eStore/notice\\_02.page](http://www.tij.co.jp/lstds/ti_ja/general/eStore/notice_02.page)

### 3.4 European Union

- 3.4.1 *For EVMs subject to EU Directive 2014/30/EU (Electromagnetic Compatibility Directive):*

This is a class A product intended for use in environments other than domestic environments that are connected to a low-voltage power-supply network that supplies buildings used for domestic purposes. In a domestic environment this product may cause radio interference in which case the user may be required to take adequate measures.

## 4 EVM Use Restrictions and Warnings:

- 4.1 EVMS ARE NOT FOR USE IN FUNCTIONAL SAFETY AND/OR SAFETY CRITICAL EVALUATIONS, INCLUDING BUT NOT LIMITED TO EVALUATIONS OF LIFE SUPPORT APPLICATIONS.
- 4.2 User must read and apply the user guide and other available documentation provided by TI regarding the EVM prior to handling or using the EVM, including without limitation any warning or restriction notices. The notices contain important safety information related to, for example, temperatures and voltages.
- 4.3 *Safety-Related Warnings and Restrictions:*
  - 4.3.1 User shall operate the EVM within TI's recommended specifications and environmental considerations stated in the user guide, other available documentation provided by TI, and any other applicable requirements and employ reasonable and customary safeguards. Exceeding the specified performance ratings and specifications (including but not limited to input and output voltage, current, power, and environmental ranges) for the EVM may cause personal injury or death, or property damage. If there are questions concerning performance ratings and specifications, User should contact a TI field representative prior to connecting interface electronics including input power and intended loads. Any loads applied outside of the specified output range may also result in unintended and/or inaccurate operation and/or possible permanent damage to the EVM and/or interface electronics. Please consult the EVM user guide prior to connecting any load to the EVM output. If there is uncertainty as to the load specification, please contact a TI field representative. During normal operation, even with the inputs and outputs kept within the specified allowable ranges, some circuit components may have elevated case temperatures. These components include but are not limited to linear regulators, switching transistors, pass transistors, current sense resistors, and heat sinks, which can be identified using the information in the associated documentation. When working with the EVM, please be aware that the EVM may become very warm.
  - 4.3.2 EVMs are intended solely for use by technically qualified, professional electronics experts who are familiar with the dangers and application risks associated with handling electrical mechanical components, systems, and subsystems. User assumes all responsibility and liability for proper and safe handling and use of the EVM by User or its employees, affiliates, contractors or designees. User assumes all responsibility and liability to ensure that any interfaces (electronic and/or mechanical) between the EVM and any human body are designed with suitable isolation and means to safely limit accessible leakage currents to minimize the risk of electrical shock hazard. User assumes all responsibility and liability for any improper or unsafe handling or use of the EVM by User or its employees, affiliates, contractors or designees.

**STANDARD TERMS FOR EVALUATION MODULES (continued)**

- 4.4 User assumes all responsibility and liability to determine whether the EVM is subject to any applicable international, federal, state, or local laws and regulations related to User's handling and use of the EVM and, if applicable, User assumes all responsibility and liability for compliance in all respects with such laws and regulations. User assumes all responsibility and liability for proper disposal and recycling of the EVM consistent with all applicable international, federal, state, and local requirements.
5. *Accuracy of Information:* To the extent TI provides information on the availability and function of EVMs, TI attempts to be as accurate as possible. However, TI does not warrant the accuracy of EVM descriptions, EVM availability or other information on its websites as accurate, complete, reliable, current, or error-free.
6. *Disclaimers:*
- 6.1 EXCEPT AS SET FORTH ABOVE, EVMS AND ANY MATERIALS PROVIDED WITH THE EVM (INCLUDING, BUT NOT LIMITED TO, REFERENCE DESIGNS AND THE DESIGN OF THE EVM ITSELF) ARE PROVIDED "AS IS" AND "WITH ALL FAULTS." TI DISCLAIMS ALL OTHER WARRANTIES, EXPRESS OR IMPLIED, REGARDING SUCH ITEMS, INCLUDING BUT NOT LIMITED TO ANY EPIDEMIC FAILURE WARRANTY OR IMPLIED WARRANTIES OF MERCHANTABILITY OR FITNESS FOR A PARTICULAR PURPOSE OR NON-INFRINGEMENT OF ANY THIRD PARTY PATENTS, COPYRIGHTS, TRADE SECRETS OR OTHER INTELLECTUAL PROPERTY RIGHTS.
- 6.2 EXCEPT FOR THE LIMITED RIGHT TO USE THE EVM SET FORTH HEREIN, NOTHING IN THESE TERMS SHALL BE CONSTRUED AS GRANTING OR CONFERRING ANY RIGHTS BY LICENSE, PATENT, OR ANY OTHER INDUSTRIAL OR INTELLECTUAL PROPERTY RIGHT OF TI, ITS SUPPLIERS/LICENSORS OR ANY OTHER THIRD PARTY, TO USE THE EVM IN ANY FINISHED END-USER OR READY-TO-USE FINAL PRODUCT, OR FOR ANY INVENTION, DISCOVERY OR IMPROVEMENT, REGARDLESS OF WHEN MADE, CONCEIVED OR ACQUIRED.
7. *USER'S INDEMNITY OBLIGATIONS AND REPRESENTATIONS.* USER WILL DEFEND, INDEMNIFY AND HOLD TI, ITS LICENSORS AND THEIR REPRESENTATIVES HARMLESS FROM AND AGAINST ANY AND ALL CLAIMS, DAMAGES, LOSSES, EXPENSES, COSTS AND LIABILITIES (COLLECTIVELY, "CLAIMS") ARISING OUT OF OR IN CONNECTION WITH ANY HANDLING OR USE OF THE EVM THAT IS NOT IN ACCORDANCE WITH THESE TERMS. THIS OBLIGATION SHALL APPLY WHETHER CLAIMS ARISE UNDER STATUTE, REGULATION, OR THE LAW OF TORT, CONTRACT OR ANY OTHER LEGAL THEORY, AND EVEN IF THE EVM FAILS TO PERFORM AS DESCRIBED OR EXPECTED.
8. *Limitations on Damages and Liability:*
- 8.1 *General Limitations.* IN NO EVENT SHALL TI BE LIABLE FOR ANY SPECIAL, COLLATERAL, INDIRECT, PUNITIVE, INCIDENTAL, CONSEQUENTIAL, OR EXEMPLARY DAMAGES IN CONNECTION WITH OR ARISING OUT OF THESE TERMS OR THE USE OF THE EVMS, REGARDLESS OF WHETHER TI HAS BEEN ADVISED OF THE POSSIBILITY OF SUCH DAMAGES. EXCLUDED DAMAGES INCLUDE, BUT ARE NOT LIMITED TO, COST OF REMOVAL OR REINSTALLATION, ANCILLARY COSTS TO THE PROCUREMENT OF SUBSTITUTE GOODS OR SERVICES, RETESTING, OUTSIDE COMPUTER TIME, LABOR COSTS, LOSS OF GOODWILL, LOSS OF PROFITS, LOSS OF SAVINGS, LOSS OF USE, LOSS OF DATA, OR BUSINESS INTERRUPTION. NO CLAIM, SUIT OR ACTION SHALL BE BROUGHT AGAINST TI MORE THAN TWELVE (12) MONTHS AFTER THE EVENT THAT GAVE RISE TO THE CAUSE OF ACTION HAS OCCURRED.
- 8.2 *Specific Limitations.* IN NO EVENT SHALL TI'S AGGREGATE LIABILITY FROM ANY USE OF AN EVM PROVIDED HEREUNDER, INCLUDING FROM ANY WARRANTY, INDEMNITY OR OTHER OBLIGATION ARISING OUT OF OR IN CONNECTION WITH THESE TERMS, EXCEED THE TOTAL AMOUNT PAID TO TI BY USER FOR THE PARTICULAR EVM(S) AT ISSUE DURING THE PRIOR TWELVE (12) MONTHS WITH RESPECT TO WHICH LOSSES OR DAMAGES ARE CLAIMED. THE EXISTENCE OF MORE THAN ONE CLAIM SHALL NOT ENLARGE OR EXTEND THIS LIMIT.
9. *Return Policy.* Except as otherwise provided, TI does not offer any refunds, returns, or exchanges. Furthermore, no return of EVM(s) will be accepted if the package has been opened and no return of the EVM(s) will be accepted if they are damaged or otherwise not in a resalable condition. If User feels it has been incorrectly charged for the EVM(s) it ordered or that delivery violates the applicable order, User should contact TI. All refunds will be made in full within thirty (30) working days from the return of the components(s), excluding any postage or packaging costs.
10. *Governing Law:* These terms and conditions shall be governed by and interpreted in accordance with the laws of the State of Texas, without reference to conflict-of-laws principles. User agrees that non-exclusive jurisdiction for any dispute arising out of or relating to these terms and conditions lies within courts located in the State of Texas and consents to venue in Dallas County, Texas. Notwithstanding the foregoing, any judgment may be enforced in any United States or foreign court, and TI may seek injunctive relief in any United States or foreign court.

## IMPORTANT NOTICE FOR TI DESIGN INFORMATION AND RESOURCES

Texas Instruments Incorporated ("TI") technical, application or other design advice, services or information, including, but not limited to, reference designs and materials relating to evaluation modules, (collectively, "TI Resources") are intended to assist designers who are developing applications that incorporate TI products; by downloading, accessing or using any particular TI Resource in any way, you (individually or, if you are acting on behalf of a company, your company) agree to use it solely for this purpose and subject to the terms of this Notice.

TI's provision of TI Resources does not expand or otherwise alter TI's applicable published warranties or warranty disclaimers for TI products, and no additional obligations or liabilities arise from TI providing such TI Resources. TI reserves the right to make corrections, enhancements, improvements and other changes to its TI Resources.

You understand and agree that you remain responsible for using your independent analysis, evaluation and judgment in designing your applications and that you have full and exclusive responsibility to assure the safety of your applications and compliance of your applications (and of all TI products used in or for your applications) with all applicable regulations, laws and other applicable requirements. You represent that, with respect to your applications, you have all the necessary expertise to create and implement safeguards that (1) anticipate dangerous consequences of failures, (2) monitor failures and their consequences, and (3) lessen the likelihood of failures that might cause harm and take appropriate actions. You agree that prior to using or distributing any applications that include TI products, you will thoroughly test such applications and the functionality of such TI products as used in such applications. TI has not conducted any testing other than that specifically described in the published documentation for a particular TI Resource.

You are authorized to use, copy and modify any individual TI Resource only in connection with the development of applications that include the TI product(s) identified in such TI Resource. NO OTHER LICENSE, EXPRESS OR IMPLIED, BY ESTOPPEL OR OTHERWISE TO ANY OTHER TI INTELLECTUAL PROPERTY RIGHT, AND NO LICENSE TO ANY TECHNOLOGY OR INTELLECTUAL PROPERTY RIGHT OF TI OR ANY THIRD PARTY IS GRANTED HEREIN, including but not limited to any patent right, copyright, mask work right, or other intellectual property right relating to any combination, machine, or process in which TI products or services are used. Information regarding or referencing third-party products or services does not constitute a license to use such products or services, or a warranty or endorsement thereof. Use of TI Resources may require a license from a third party under the patents or other intellectual property of the third party, or a license from TI under the patents or other intellectual property of TI.

TI RESOURCES ARE PROVIDED "AS IS" AND WITH ALL FAULTS. TI DISCLAIMS ALL OTHER WARRANTIES OR REPRESENTATIONS, EXPRESS OR IMPLIED, REGARDING TI RESOURCES OR USE THEREOF, INCLUDING BUT NOT LIMITED TO ACCURACY OR COMPLETENESS, TITLE, ANY EPIDEMIC FAILURE WARRANTY AND ANY IMPLIED WARRANTIES OF MERCHANTABILITY, FITNESS FOR A PARTICULAR PURPOSE, AND NON-INFRINGEMENT OF ANY THIRD PARTY INTELLECTUAL PROPERTY RIGHTS.

TI SHALL NOT BE LIABLE FOR AND SHALL NOT DEFEND OR INDEMNIFY YOU AGAINST ANY CLAIM, INCLUDING BUT NOT LIMITED TO ANY INFRINGEMENT CLAIM THAT RELATES TO OR IS BASED ON ANY COMBINATION OF PRODUCTS EVEN IF DESCRIBED IN TI RESOURCES OR OTHERWISE. IN NO EVENT SHALL TI BE LIABLE FOR ANY ACTUAL, DIRECT, SPECIAL, COLLATERAL, INDIRECT, PUNITIVE, INCIDENTAL, CONSEQUENTIAL OR EXEMPLARY DAMAGES IN CONNECTION WITH OR ARISING OUT OF TI RESOURCES OR USE THEREOF, AND REGARDLESS OF WHETHER TI HAS BEEN ADVISED OF THE POSSIBILITY OF SUCH DAMAGES.

You agree to fully indemnify TI and its representatives against any damages, costs, losses, and/or liabilities arising out of your non-compliance with the terms and provisions of this Notice.

This Notice applies to TI Resources. Additional terms apply to the use and purchase of certain types of materials, TI products and services. These include; without limitation, TI's standard terms for semiconductor products (<http://www.ti.com/sc/docs/stdterms.htm>), [evaluation modules](#), and [samples](http://www.ti.com/sc/docs/sampterm.htm) (<http://www.ti.com/sc/docs/sampterm.htm>).

Mailing Address: Texas Instruments, Post Office Box 655303, Dallas, Texas 75265  
Copyright © 2018, Texas Instruments Incorporated