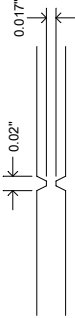


REVISION HISTORY				
ECO	REV	DESCRIPTION	APPROVED	DATE
-	1	1ST PROTOTYPE	KEITH B.	08-16-10

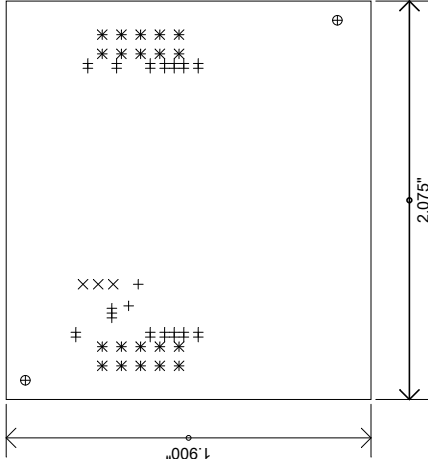
NOTES: UNLESS OTHERWISE SPECIFIED

1. FAB PER IPC-A-600
2. MATERIAL:
  - EPOXY FIBERGLASS, NEMA GRADE FR-4
  - FINISHED THICKNESS TO BE 0.062" +/- .005"
  - TOTAL OF 4 LAYERS WITH 1 OZ. CU ON THE OUTER LAYERS AND 1 OZ. CU ON THE INNER LAYERS
  - FLAMMABILITY RATING: 94V-0 MINIMUM
3. SIZE: CUT TO DIMENSIONS AND TOLERANCES SHOWN
4. DRILLING:
  - DRILL HOLES PER SCHEDULE: PLATE THROUGH
  - HOLES WITH COPPER, 0.001" THICK MIN.
  - ALL HOLE SIZES ARE SPECIFIED AFTER PLATING
  - HOLE LOCATION TOLERANCES ARE +/- 0.003" IN RELATION TO CENTER
5. FINISH:
  - SMOBC USING LPI BOTH SIDES, COLOR GREEN
  - GOLD IMMERSION BOTH SIDES
  - LEAD FREE SOLDER MAY BE USED FOR PROTOTYPE)
  - FOR SILKSCREEN: TOP SIDE USE WHITE NON-CONDUCTIVE INK
6. DO NOT ALTER ARTWORK e.g. TO ADD LOGO OR DATE CODE.
  - PAD SIZE MAY BE MODIFIED TO MEET END FINISH.
7. PCBs ARE TO BE RoHS COMPLIANT
8. DESIGN HAS SOLDER MASK DEFINED PADS ON U1.
- U1 SOLDER MASK SIZE IS 25 MIL AND PAD SIZE IS 29 MIL.
- DO NOT CHANGE ANY SIZE ON THIS COMPONENT.
9. SCORING FOR PANELIZED PCB:

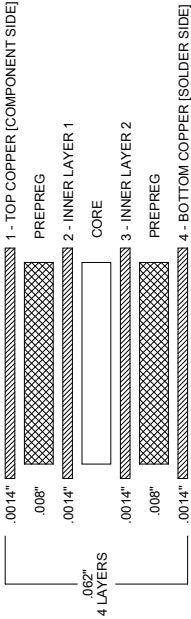


SIZE	QTY	SYM	PLATED	TOL
0.010"	31	+	YES	+/-0.003"
0.032"	3	X	YES	+/-0.003"
0.040"	20	*	YES	+/-0.003"
0.070"	2	⊕	NO	+/-0.003"

SHOWN FROM COMPONENT SIDE



LAYER STRUCTURE



<div> </div> <div>           1630 McCarthy Blvd.            Milpitas, CA 95035            Phone: (408) 432-1900            Fax: (408) 434-0507  <a href="http://www.linear.com">www.linear.com</a> </div>		LTC CONFIDENTIAL FOR CUSTOMER USE ONLY	
		TITLE: SCHEMATIC SPI/DIGITAL OR I2C μMODULE ISOLATOR, LOW EMI	
UNLESS OTHERWISE SPECIFIED DIMENSIONS ARE IN INCHES TOLERANCES: 0.XX" = +/- 0.01" 0.XXX" = +/- 0.005" INTERPRET DIM AND TOL PER ASME Y14.5M-1994		PCB DES. APP ENG.	APPROVALS KEITH B. KEITH B.
THIRD ANGLE PROJECTION 		SIZE N/A	IC NO. LTM2883CY-3S/-5S/-3I/-5I DEMO CIRCUIT 1748A
SCALE = 1:1 		DATE: Monday August 16, 2010	REV. 1
		SHEET 1 OF 1	