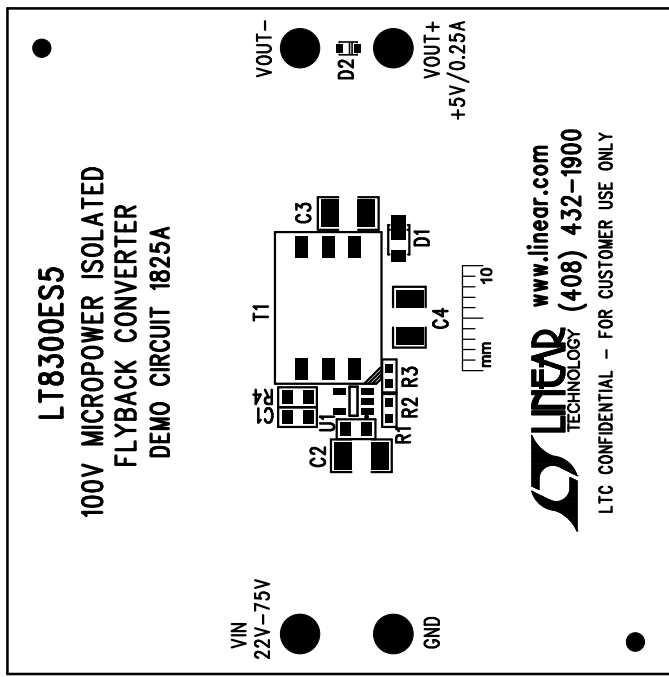
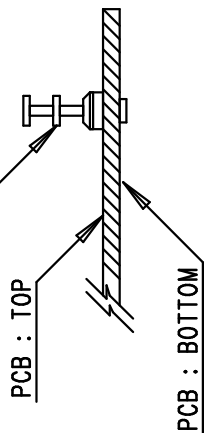


REVISION HISTORY			
ECO	REV	DESCRIPTION	APPR
	2	PRODUCTION	ZHONGMING Y.
			DATE
			1-9-12

NOTES: UNLESS OTHERWISE SPECIFIED

- 1. WORKMANSHIP SHALL BE IN ACCORDANCE WITH IPC-A-610.
- 2. ASSEMBLY PROCESS SHALL INCLUDE: REFLOW SOLDER SIDE SMD. MAXIMUM SOLDER TEMPERATURE IS 240 DEGREES CELSIUS.
- 3. PARTS TO OMIT WILL BE SPECIFIED ON THE BILL OF MATERIALS. LOCATIONS OF OMITTED PARTS SHALL BE FREE OF SOLDER. MASK THE SOLDER STENCIL WHERE SMT PARTS ARE OMITTED.
- 4. DEPANELIZE BOARDS AFTER ASSEMBLY AND ROUTE-OUT THE BREAKOUT TABS ON FOUR SIDES OF THE BOARD EDGE.
- 5. DO NOT APPLY ANY KIND OF ASSEMBLY STAMP OR QA STAMP TO ANY BOARD.

6: TURRETS : MILL-MAX 2501-2



APPROVALS		LINEAR TECHNOLOGY		1630 MCCARTHY BLVD MILPITAS, CA 95035 PH: (408)432-1900 WWW.LINEAR.COM LTC CONFIDENTIAL - FOR CUSTOMER USE ONLY	
PCB DES.	HZ	TITLE: TOP ASSEMBLY DRAWING		100V MICROPOWER ISOLATED FLYBACK CONVERTER	
APP ENG.	ZHONGMING Y.	SIZE		IC NO. LT8300ES5	
		N/A		REV. 2	
				DEMO CIRCUIT 1825A	
SCALE = NONE		FILENAME: DC1825A-2.PCB		SHT 1 OF 1	