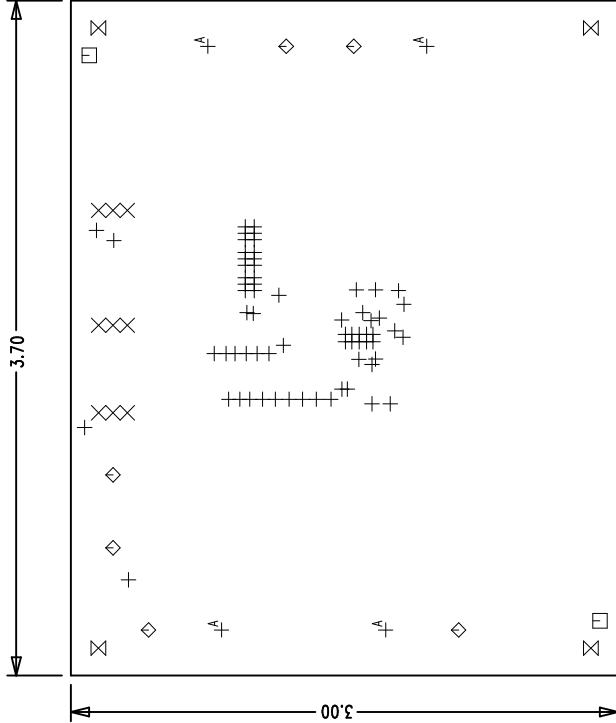


LTC CONFIDENTIAL - For Customer Use Only

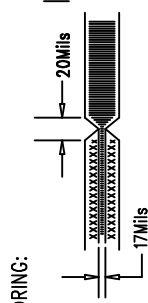
REVISION HISTORY

ECO	REV	DESCRIPTION	DATE	APPROVED
	1	PROTO	07/20/05	
	2	CHANGE CIRCUIT, PART VALUES	09/30/05	
	3	ADD RESISTORS, R26-R28	01/11/06	
	4	CHANGES, CIRCUIT AND PARTS ETC.	03/15/06	
	5	CHANGES, PARTS ETC.	04/25/06	



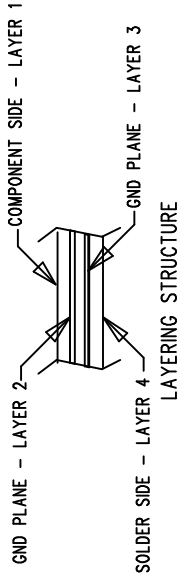
NOTES: UNLESS OTHERWISE SPECIFIED,

- ARTWORK P/N DC947A REV 5.
- FAB PER IPC-A-600
- MATERIAL: EPOXY FIBERGLASS, NEMA GRADE FR-4 .062 +/- .005 INCH THICKNESS WITH 2 OZ. COPPER FINISH ON TWO OUTER LAYERS AND 1 OZ. COPPER ON TWO INTERNAL LAYERS. FLAMABILITY RATING: 94 V-2 MINIMUM .
- SIZE: CUT TO DIMENSIONS AND TOLERANCES SHOWN. 0.00 ARE PRIMARY DATUMS.
- BOARD: SELECTIVE PLATED BOARD. SOLDER MASK OVER BARE COPPER, COLOR, GREEN LPI. WHITE TIN IMMERSION (OMIKRON) BOTH SIDES. SILKSCREEN COMPONENT SIDE WITH WHITE NON-CONDUCTIVE INK.
- PLATE THRU ALL HOLES WITH COPPER
- MIN. PLATING THICKNESS: 1 OZ. EXCEPT WHERE PLATING NOT REQUIRED
- DRILL: ALL HOLES SHALL BE DRILLED +/- .003 INCH WITH RESPECT TO CTR. OF DRILLED PAD. ALL HOLES FINISHED SIZE AFTER PLATING.
- DROP ALL UNUSED PADS ON INNER LAYERS.
- DO NOT ALTER ARTWORK e.g. TO ADD LOGO OR DATE CODE.



LINEAR TECHNOLOGY CORPORATION
DC947A REV 5
05/24/06

SIZE	QTY	SYM	PLTD	TOL
10	68	+	YES	+/-0.003
30	9	X	YES	+/-0.003
70	2	□	NO	+/-0.005
94	6	◇	YES	+/-0.005
187	4	⊗	NO	+/-0.01
205	4	⊕	YES	+/-0.01



UNLESS OTHERWISE SPECIFIED DIMENSIONS ARE IN INCHES TOLERANCES ON ANGLE ± 1° 2 PLACE ±.01 3 PLACE ±.005 INTERPRET DIM AND TOL PER ASME Y14.5M - 1994	CONTRACT NO.		TITLE	
	APPROVALS	DATE	FAB, LT3740EDHC, HIGH EFFICIENCY STEP-DOWN CONVERTER	
	DRAWN MEI	07/20/05	SIZE A	REV 5
	CHECKED		CAGE CODE	DWG NO.
APPROVED David Ng	04/25/06	SCALE 1/1	FILENAME: 947A-5.PCB	SHEET 1 OF 1
DO NOT SCALE DRAWING	DESIGNED BY			



1630 McCarthy Blvd.
Milpitas, CA 95035
Phone: (408)432-1900
Fax: (408)434-0507