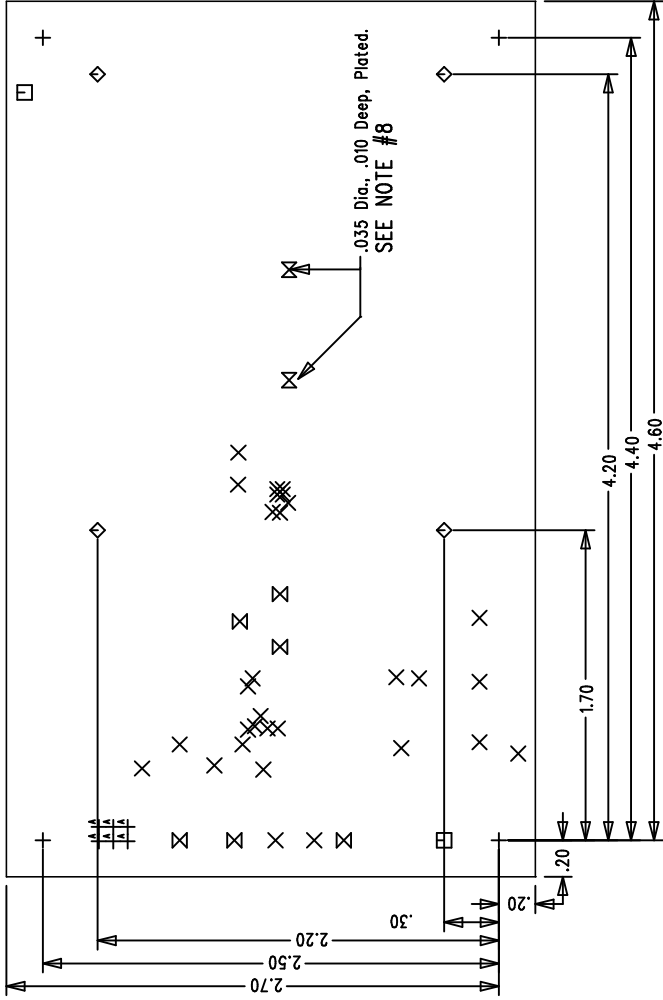


LTC CONFIDENTIAL - For Customer Use Only

REVISION HISTORY

ECO	REV	DESCRIPTION	DATE	APPROVED
	3	PROTO	06/21/05	

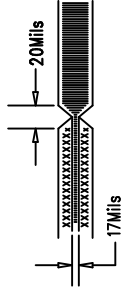
COMPONENT SIDE SHOWN



NOTES: UNLESS OTHERWISE SPECIFIED:

- ARTWORK P/N DC855A REV 3.
- FAB PER IPC-A-600. 2-LAYERS
- MATERIAL: EPOXY FIBERGLASS, NEMA GRADE FR-4
.062 +/- .005 INCH THICKNESS WITH 2 OZ.
COPPER FINISH ON TWO OUTER LAYERS.
FLAMABILITY RATING: 94 V-2 MINIMUM .
- SIZE: CUT TO DIMENSIONS AND TOLERANCES SHOWN.
0.00 ARE PRIMARY DATUMS.
- BOARD: SELECTIVE PLATED BOARD. SOLDER
MASK OVER BARE COPPER, COLOR, GREEN LPI.
WHITE TIN IMMERSION (OMIKRON) BOTH SIDES.
SILKSCREEN COMPONENT SIDE WITH WHITE NON-
CONDUCTIVE INK.
PLATE THRU ALL HOLES WITH COPPER
MIN. PLATING THICKNESS: 1 OZ. EXCEPT
WHERE PLATING NOT REQUIRED
- DRILL: ALL HOLES SHALL BE DRILLED +/- .003 INCH
WITH RESPECT TO CTR. OF DRILLED PAD.
ALL HOLES FINISHED SIZE AFTER PLATING.
- DO NOT ALTER ARTWORK e.g. TO ADD LOGO OR DATE CODE.
- CONTROL DEPTH (Component Side).
- SCORING:

SIZE	QTY	SYM	PLTD	TOL
187	4	+	YES	+/-0.01
10	30	X	YES	+/-0.003
70	2	□	NO	+/-0.005
156	4	◇	YES	+/-0.01
94	6	⊗	YES	+/-0.01
35	2	⊗	YES	+/-0.003
31	6	+	YES	+/-0.003



UNLESS OTHERWISE SPECIFIED DIMENSIONS ARE IN INCHES TOLERANCES ON ANGLE ± 1° 2 PLACE ±.01 3 PLACE ±.005 INTERPRET DIM AND TOL PER ASME Y14.5M - 1994	CONTRACT NO.		APPROVALS		DATE
			DRAWN		11/03/04
			CHECKED		
			APPROVED		
THIRD ANGLE PROJECTION					
DO NOT SCALE DRAWING			DESIGNED BY		
TITLE		SIZE	CAGE CODE	DWG NO.	REV
FAB, LT3484EDCB-0/1/2, PHOTOFLASH CHARGER		A		DC855A	3
SCALE 1/1		FILENAME: 855A-3.PCB		SHEET 1 OF 1	

1630 McCarthy Blvd.
Milpitas, CA 95035
Phone: (408)432-1900
Fax: (408)434-0507