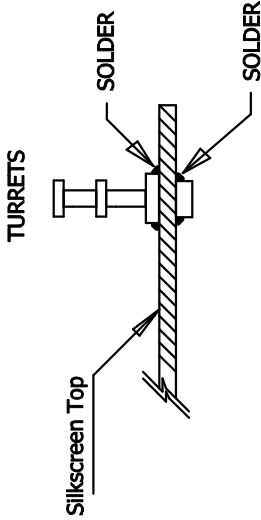



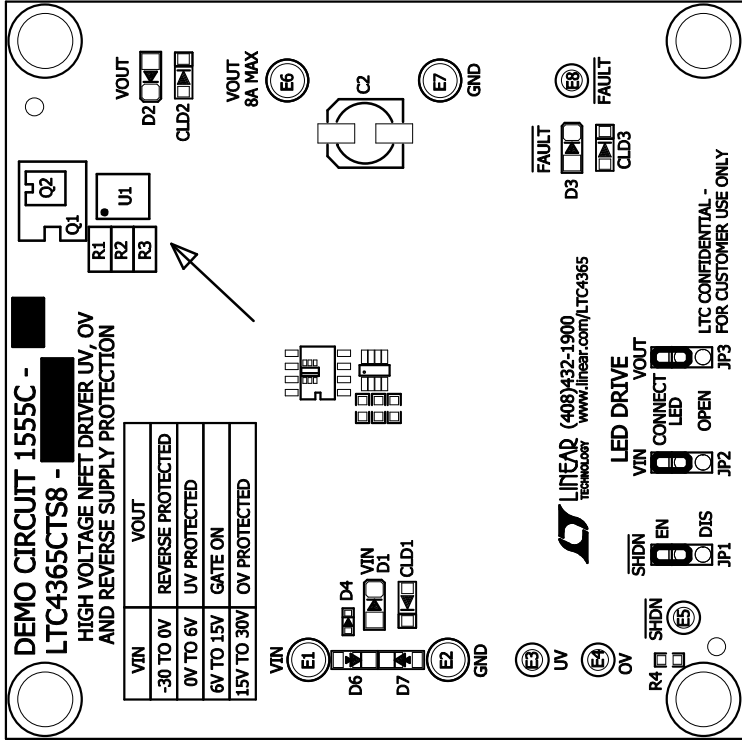
REVISION HISTORY			
ECO	REV	DESCRIPTION	DATE
—	1	Replaced LED's, Added -B Assembly	Aug 12, 2013
—	2	Replaced Q1, LED's & CLD's.	Nov 02, 2015

NOTES: UNLESS OTHERWISE SPECIFIED

1. WORKMANSHIP SHALL BE IN ACCORDANCE WITH IPC-A-610.
2. INSTALL SHUNTS AS SHOWN.
3. DEPANELIZE BOARDS AFTER ASSEMBLY AND ROUTE-OUT THE BREAKOUT TABS ON FOUR SIDES OF THE BOARD EDGE.
4. PARTS TO OMIT WILL BE SPECIFIED ON THE BILLS OF MATERIAL. LOCATIONS OF OMITTED PARTS SHALL BE FREE OF SOLDER. MASK THE SOLDER STENCIL WHERE SMT PARTS ARE OMITTED.
5. DO NOT APPLY ANY KIND OF ASSEMBLY STAMP OR QA STAMP TO ANY BOARD.
6. ASSEMBLY PROCESS SHALL INCLUDE: REFLOW SOLDER TOP SIDE SMD. MAXIMUM SOLDER TEMPERATURE IS 240 deg C.



APPROVALS				1630 MCCARTHY BLVD MILPITAS, CA 95035 PH: (408)432-1900 WWW.LINEAR.COM LTC CONFIDENTIAL- FOR CUSTOMER USE ONLY	
PCB DES.	R8	TITLE: TOP, ASSEMBLY DRAWING HIGH VOLTAGE NFET DRIVER UV, OV AND REVERSE SUPPLY PROTECTION			
APP ENG.	Viad Ostrerov				
		SIZE	IC NO. LTC4365CTS8/LTC4365CTS8-1	REV.	2
		N/A	DEMO CIRCUIT 1555C		
SCALE = NONE		FILENAME: 1555C-Rev2.PCB		SHT 1 OF 2	



BOARD ASSEMBLY

U1		
DC1555C-A	LTC4365CTS8	
DC1555C-B	LTC4365CTS8-1	

