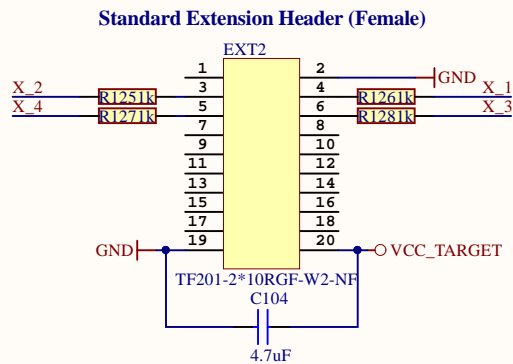
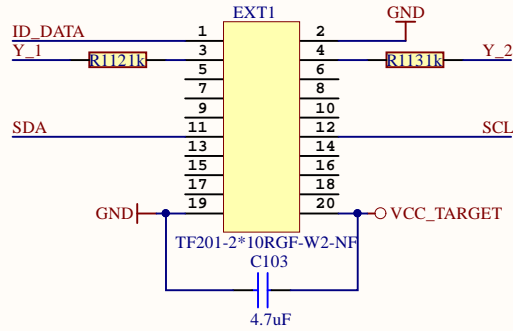
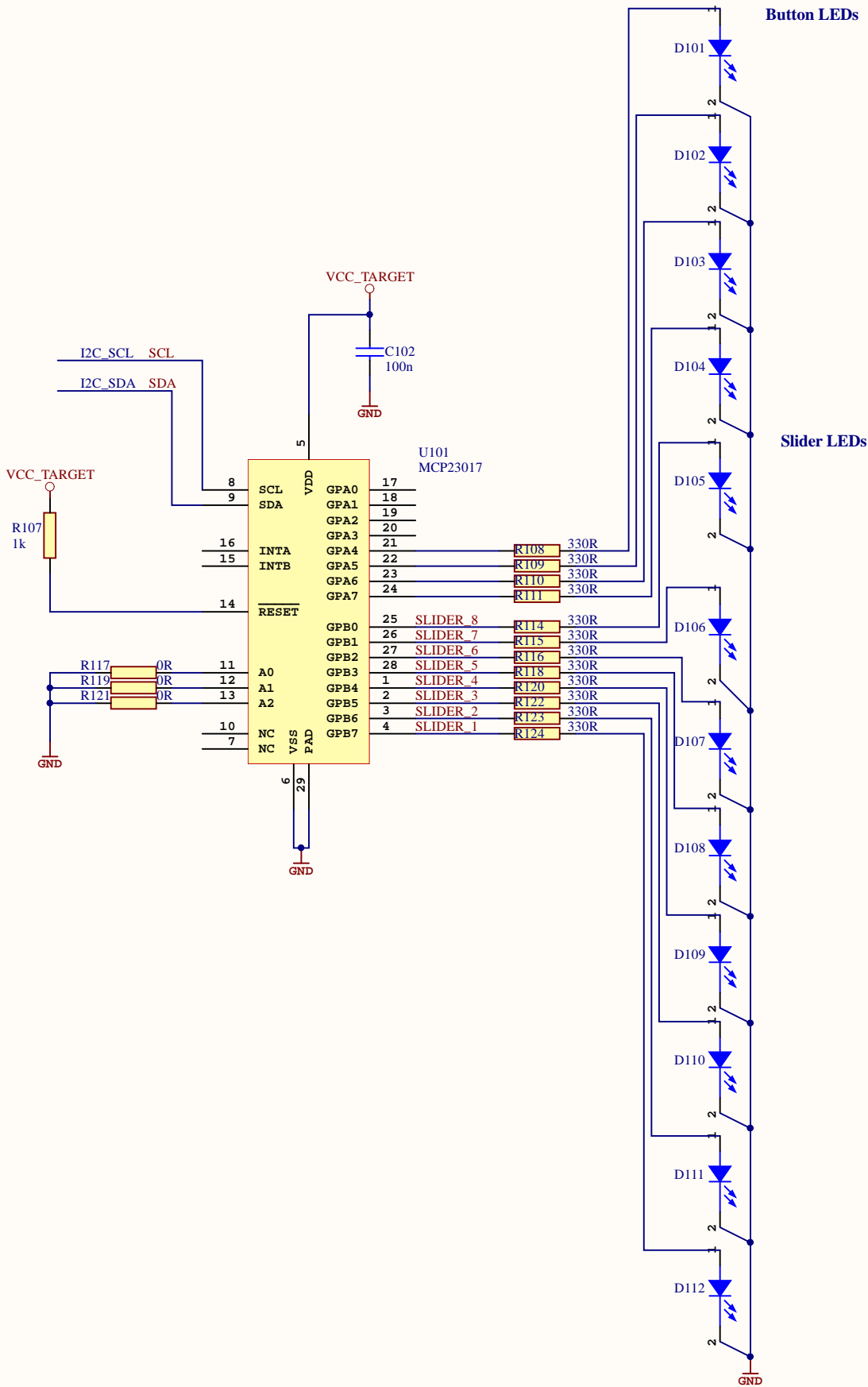
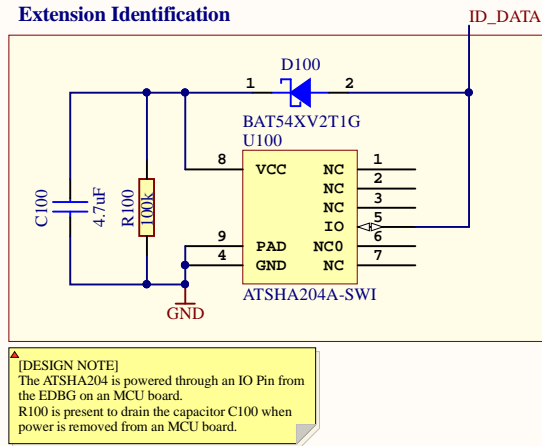
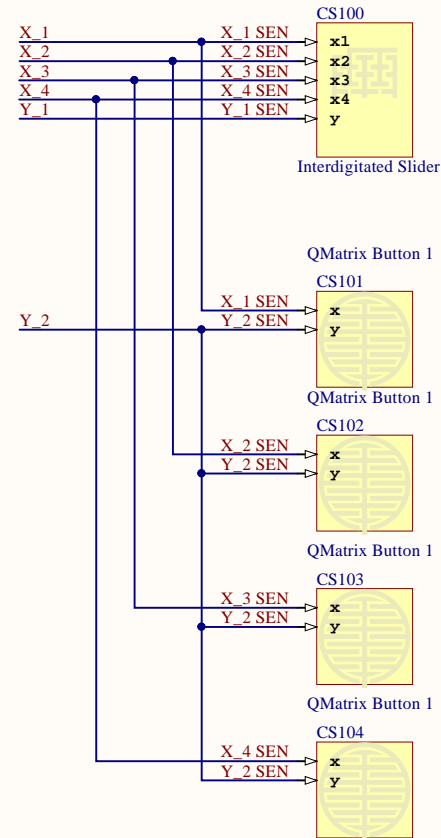
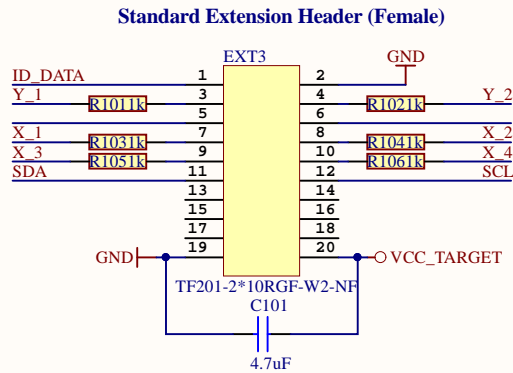


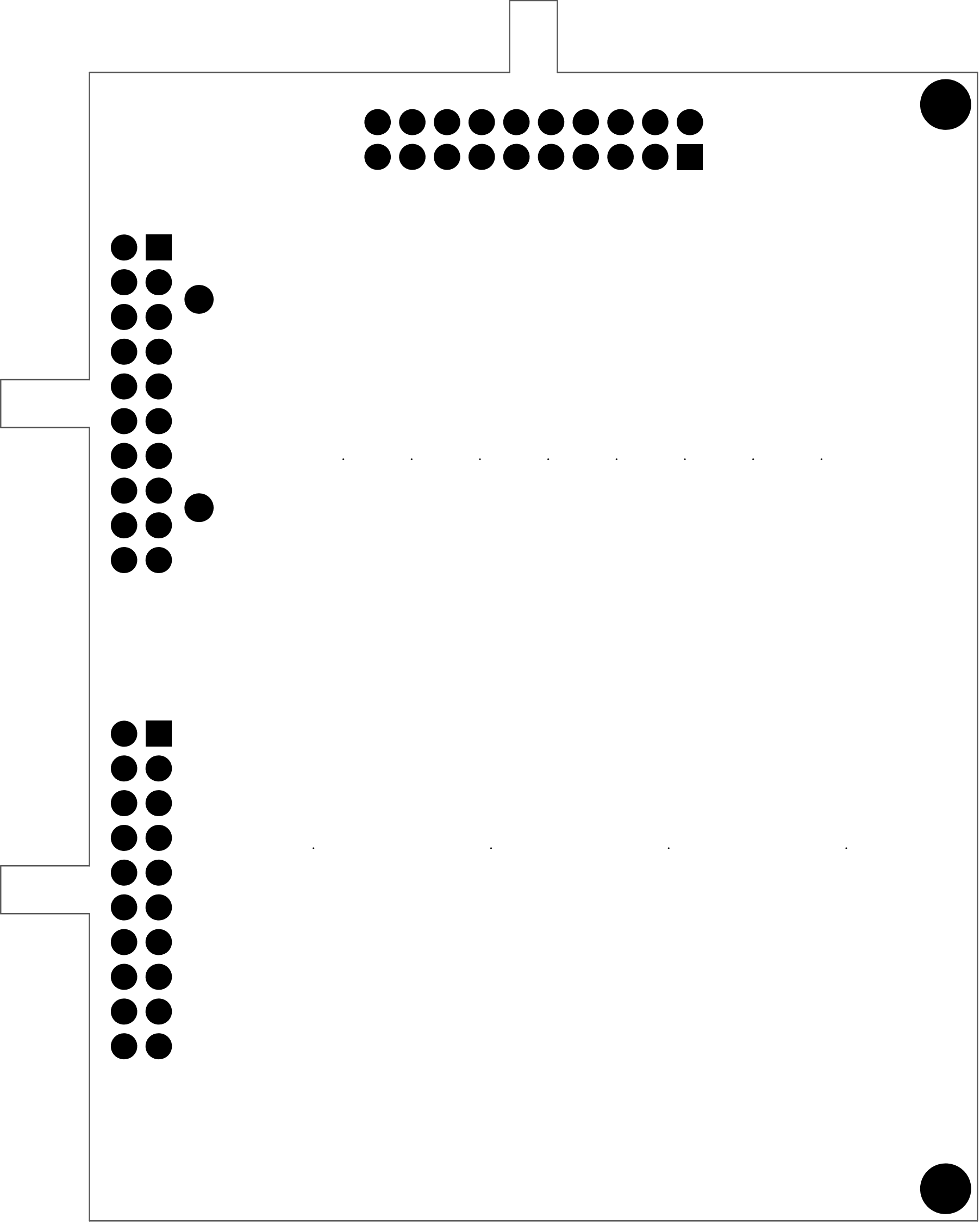


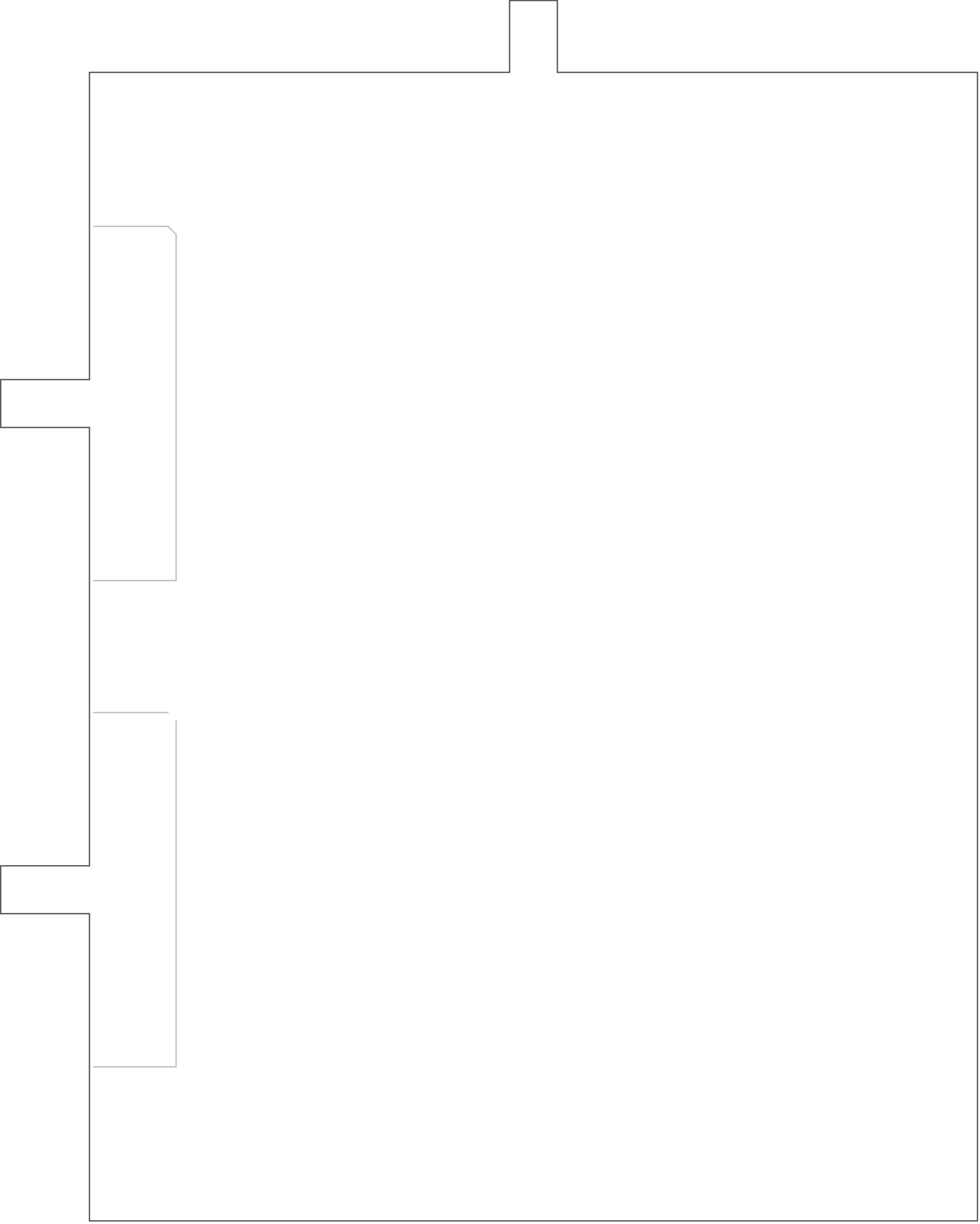
EXT1 & EXT 2 Header used to connect the MCU XPRO's with TWO HEADERS



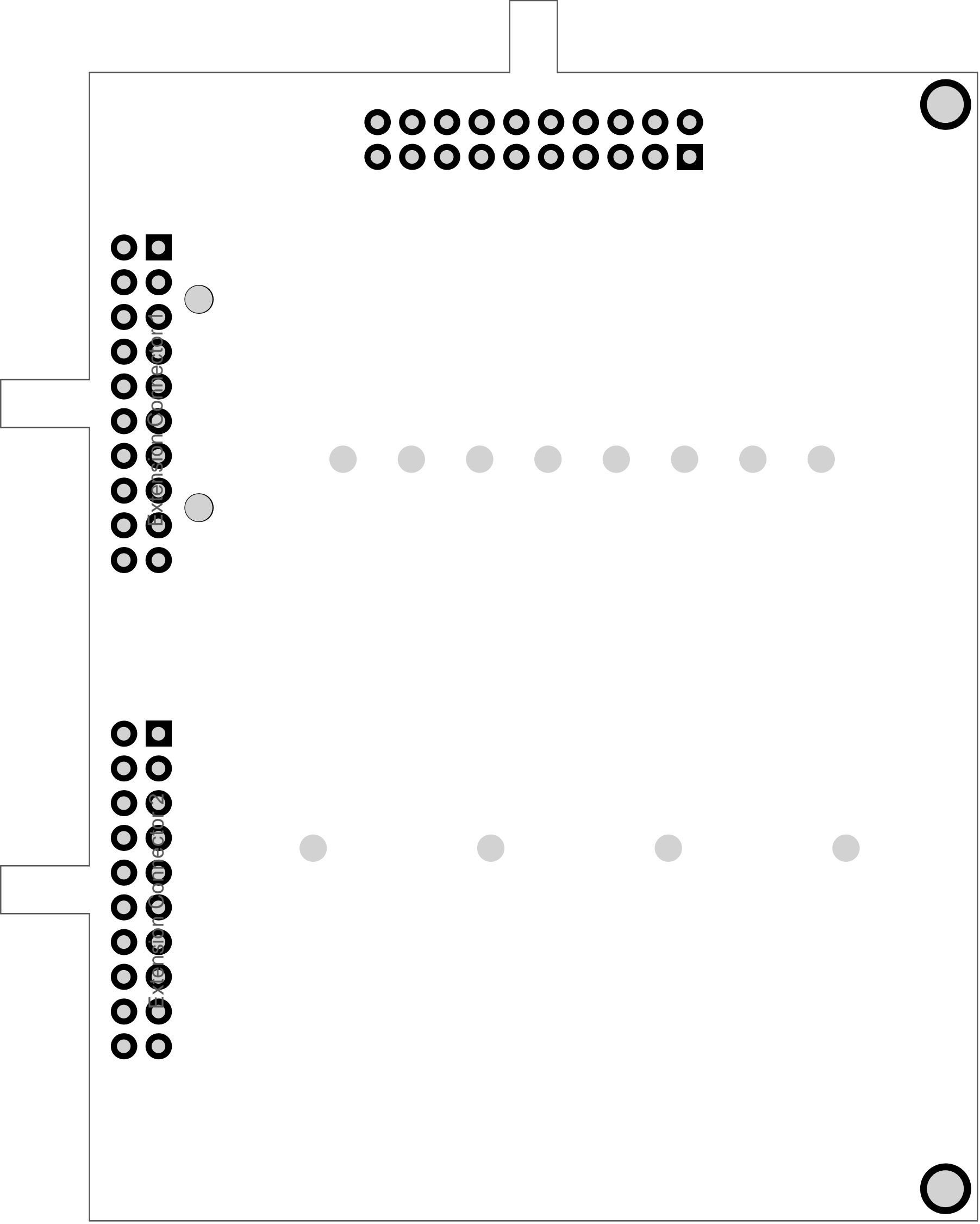
EXT3 Header used to connect the MCU XPRO's with single Header

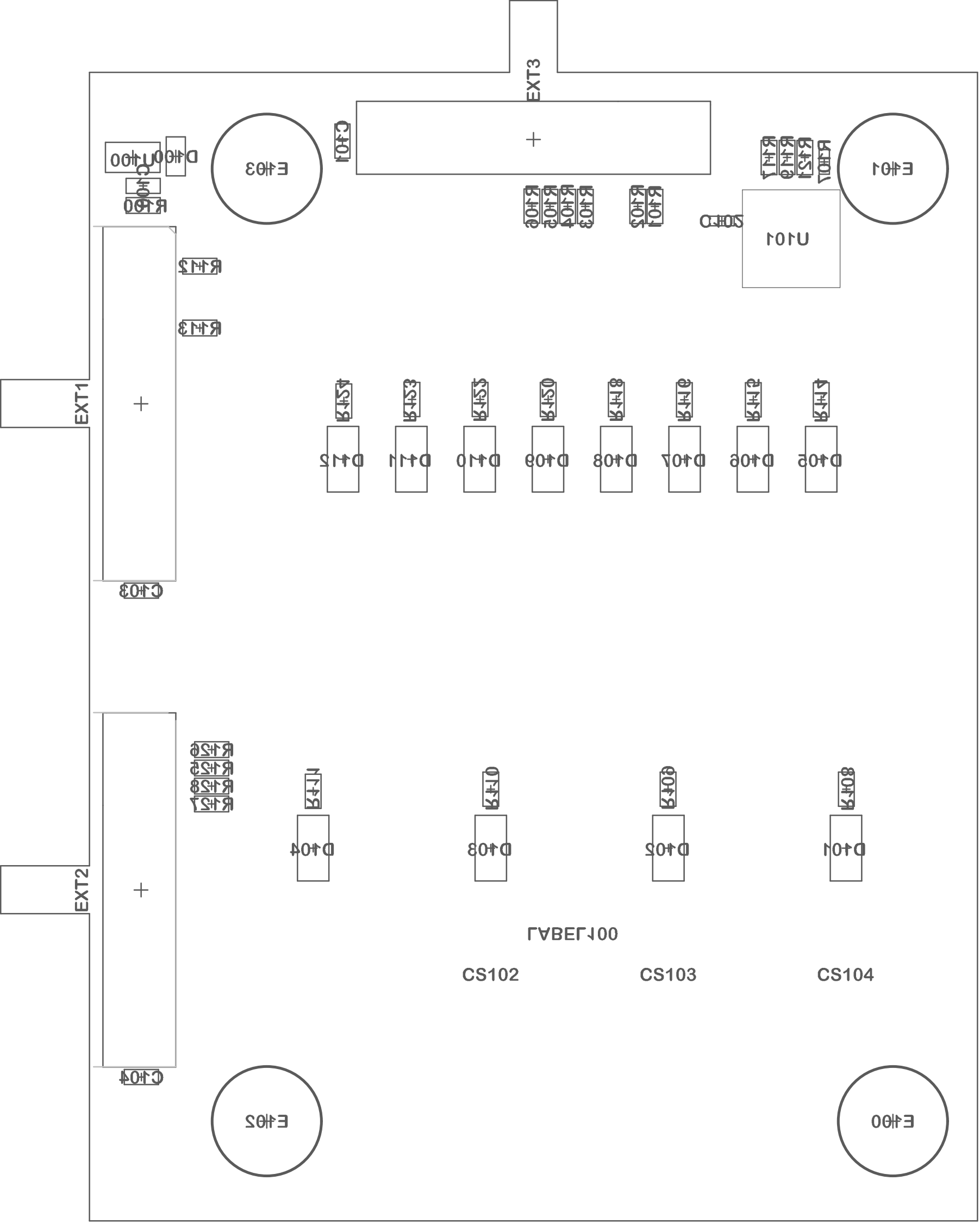




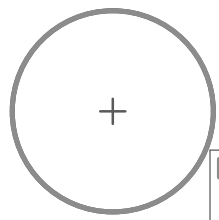




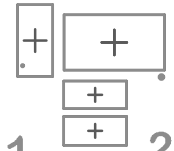
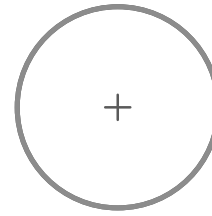
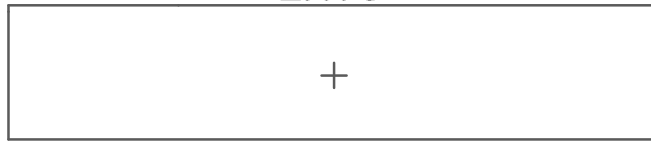




EXT3



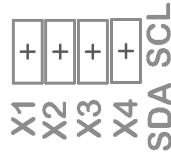
1 2



1

2

ID\_DATA GND



SDA SCL

GND VCC

ID\_DATA Y1

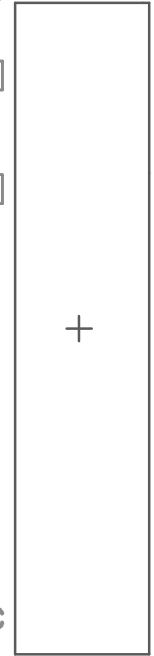


Y2



SDA SCL

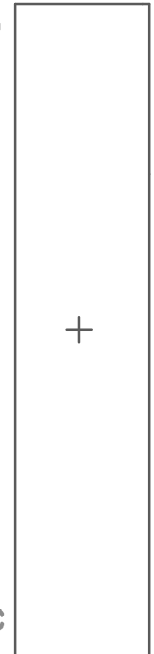
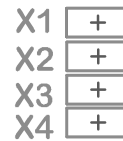
GND VCC



EXT1

1 2

NC GND



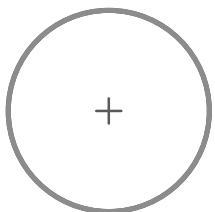
EXT2



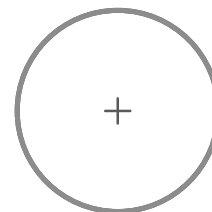
PCBA LABEL

A08-3059 Rev 1

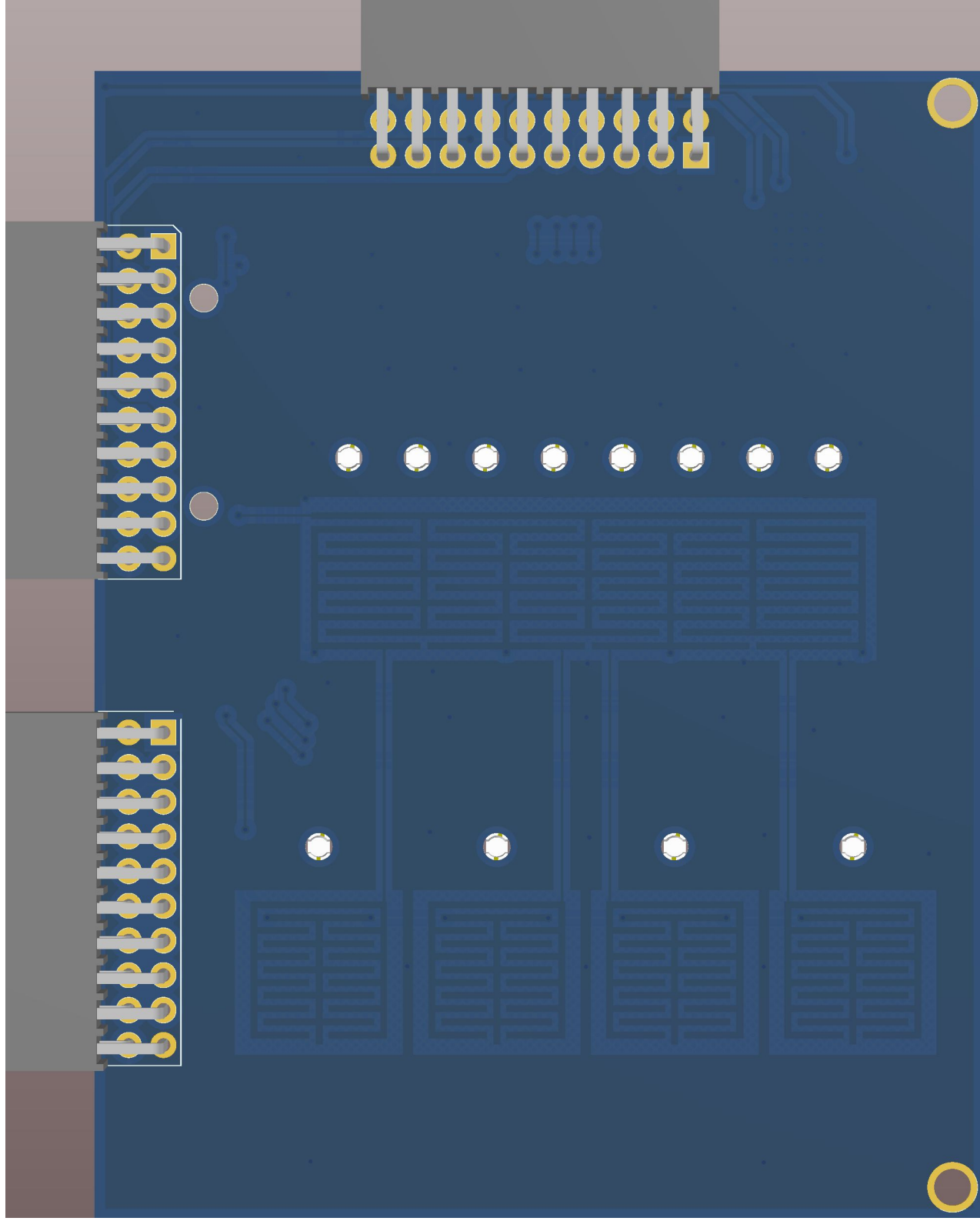
Microchip © 2019

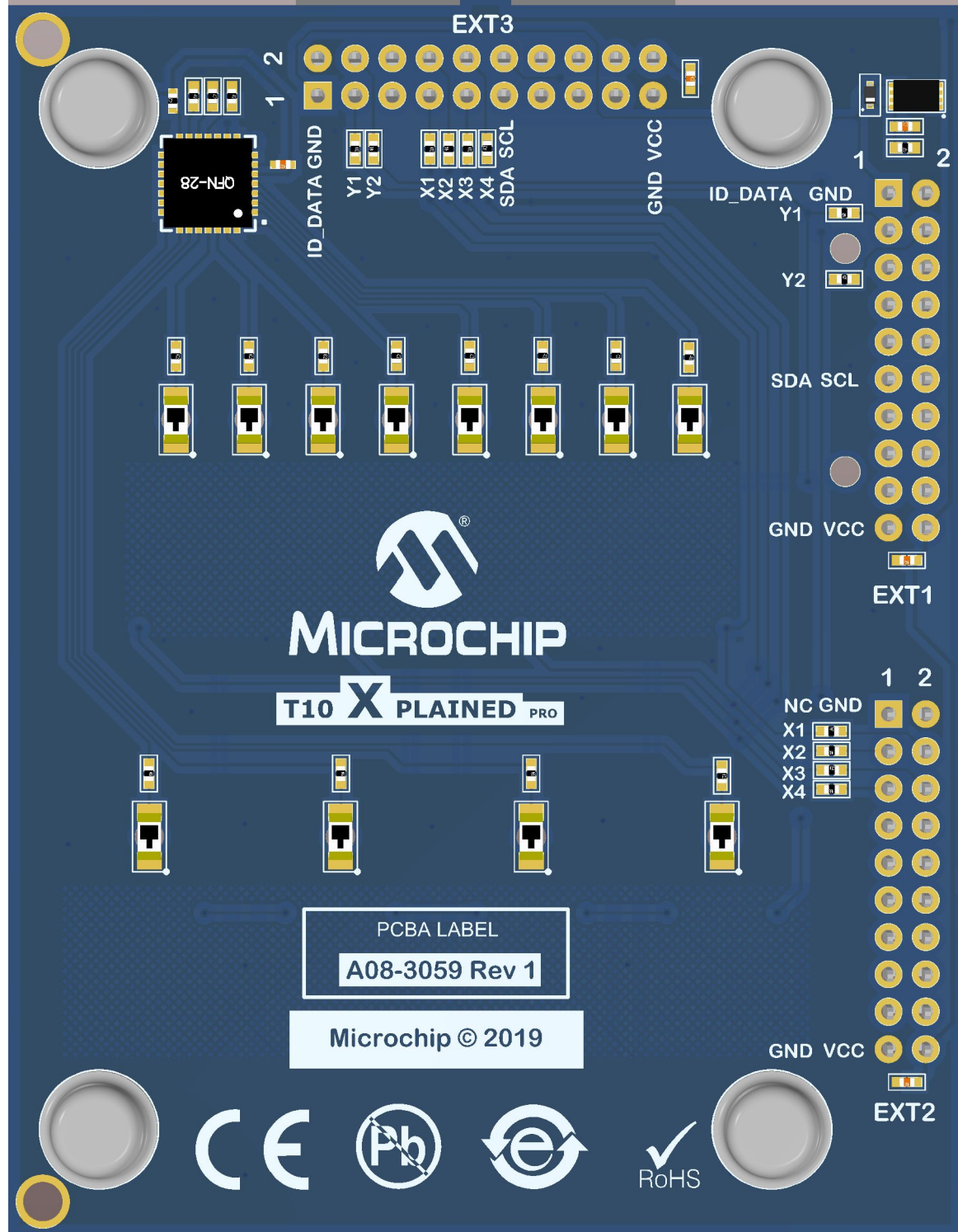


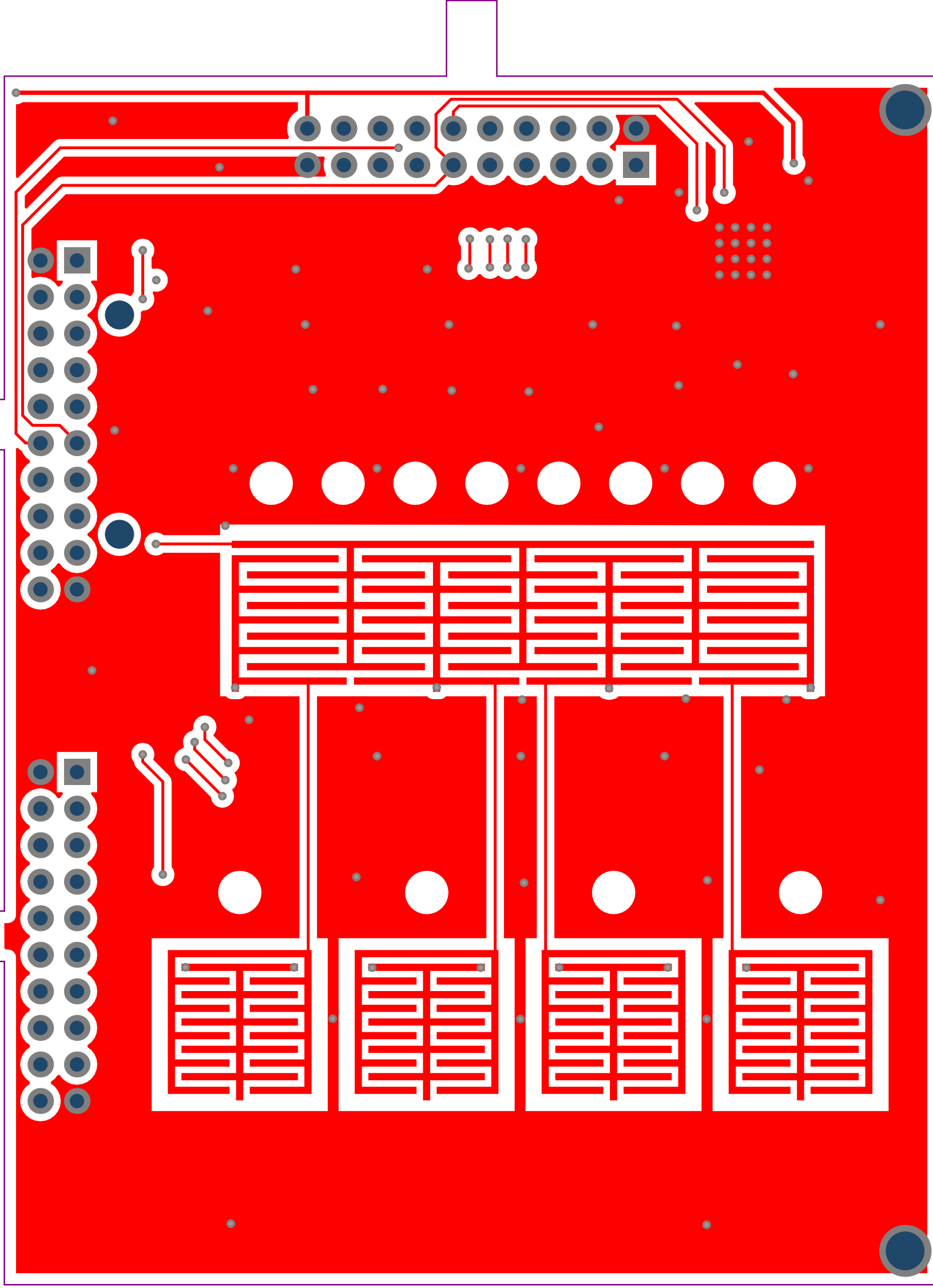
✓  
RoHS

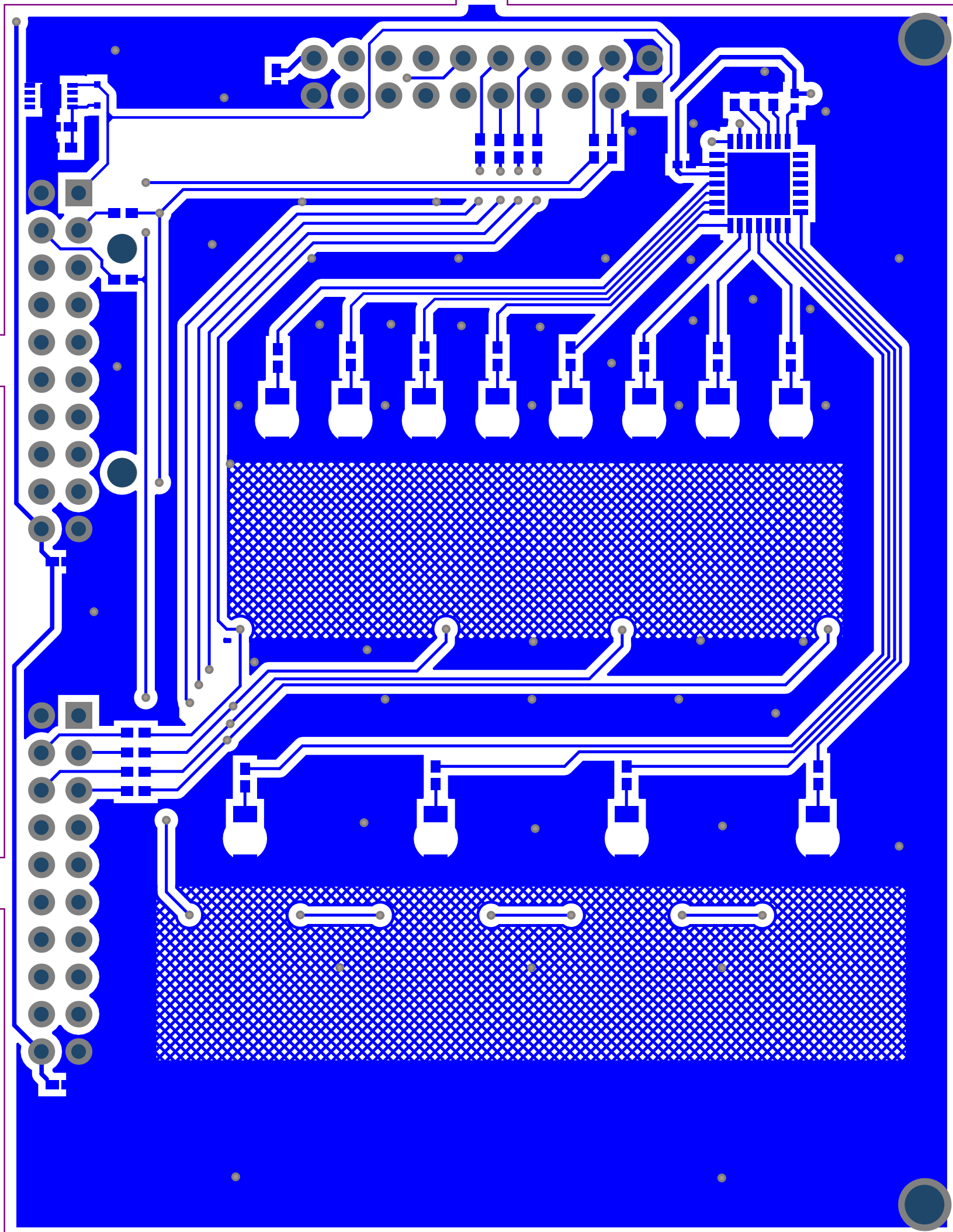












# Component list

Bill of Materials Fitted For Project [T10\_Xplained\_Pro.PrjPCB] (No PCB Document Selected)

Source Data From:

T10\_Xplained\_Pro.PrjPCB

Project:

T10\_Xplained\_Pro.PrjPCB

Variant:

None



Report Date: 12/17/2019 2:38:39 PM

Print Date: 12/17/2019 2:38:30 PM

Fitted	Designator	Quantity	Value	Manufacturer	MPN	Description
Fitted	C100	1	4.7uF	Murata	GRM155R60J475ME87D	Ceramic capacitor, SMD 0402, X5R, 6.3V, +/-20% (de33687)
Fitted	C101, C103, C104	3	4.7uF	Murata	GRM155R60J475ME87D	Ceramic capacitor, SMD 0402, X5R, 6.3V, +/-20% (de33687)
Fitted	C102	1	100n	Kemet	C0402C104K4RACTU	Ceramic capacitor, SMD 0402, X7R, 16V, +/-10%
Fitted	D100	1	BAT54XV2T1G	ON Semiconductor	BAT54XV2T1G	Schottky diode, If:200mA, Vf:0.35V, Vrrm:30V, SOD-523
Fitted	D101, D102, D103, D104, D105, D106, D107, D108, D109, D110, D111, D112	12	LTST-C250KRKT			LED, SMD, RED, 3.2x1.2mm, reverse mount
Fitted	E100, E101, E102, E103	4	SJ-5076	3M	SJ-5076	2.8mm adhesive feet, diam 8.0mm
Fitted	EXT1, EXT2, EXT3	3	TF201-2*10RGF-W2-NF	Pro-data International Corp	F201-2*10RGF-W2-NF	2x10, female pin header receptable, right-angled, 2.54mm pitch, THM, Pin In Paste
Fitted	FIXTURE100	1	Xplained PRO Extension board Jupiter Test Fixture	ESCA TEC	Xplained PRO Extension board Jupiter Test Fixture	Xplained PRO Extension board Jupiter Test Fixture
Fitted	LABEL100	1	Label PCBA	ACT Logimark AS	505462	PCBA identification label PP Top White Gloss
Fitted	PCB100	1	T10 Xplained Pro extension kit PCB documentatio			T10 Xplained Pro extension kit PCB documentation
Fitted	PCBADOC101	1	T10 Xplained Pro extension kit PCBA			T10 Xplained Pro extension kit PCBA Documentation
Fitted	PCBADOC102	1	T10 Xplained Pro Test Documentation			T10 Xplained Pro Test Documentation
Fitted	R100	1	100k			Thick film resistor, SMD 0402, 1/16W, 1%
Fitted	R101, R102, R103, R104, R105, R106, R112, R113, R125, R126, R127, R128	12	1k			Thick film resistor, SMD 0402, 1/16W, 1%
Fitted	R107	1	1k			Thick film resistor, SMD 0402, 1/16W, 1%
Fitted	R108, R109, R110, R111, R114, R115, R116, R118, R120, R122, R123, R124	12	330R	ASJ	CR10-3300-FK	Thick film resistor, SMD 0402, 1/16W, 1%
Fitted	R117, R119, R121	3	0R	(n/a)	RMCF0402ZT0R00	RES 0.0 OHM 1/16W 0402 SMD
Fitted	TEST100	1	T10 Xplained Pro test software			Fixture eggTest for T10 Xplained Pro
Fitted	U100	1	ATSHA204 SWI UDFN8	ATMEL	ATSHA204A-MAHCZ-T	ATSHA204 with 1-wire interface and UDFN8 package
Fitted	U101	1	MCP23017	Microchip Technology Inc	MCP23017-EML	16-Bit I/O Expander with I2C interface, 28-Lead QFN
		62				

Approved

Notes