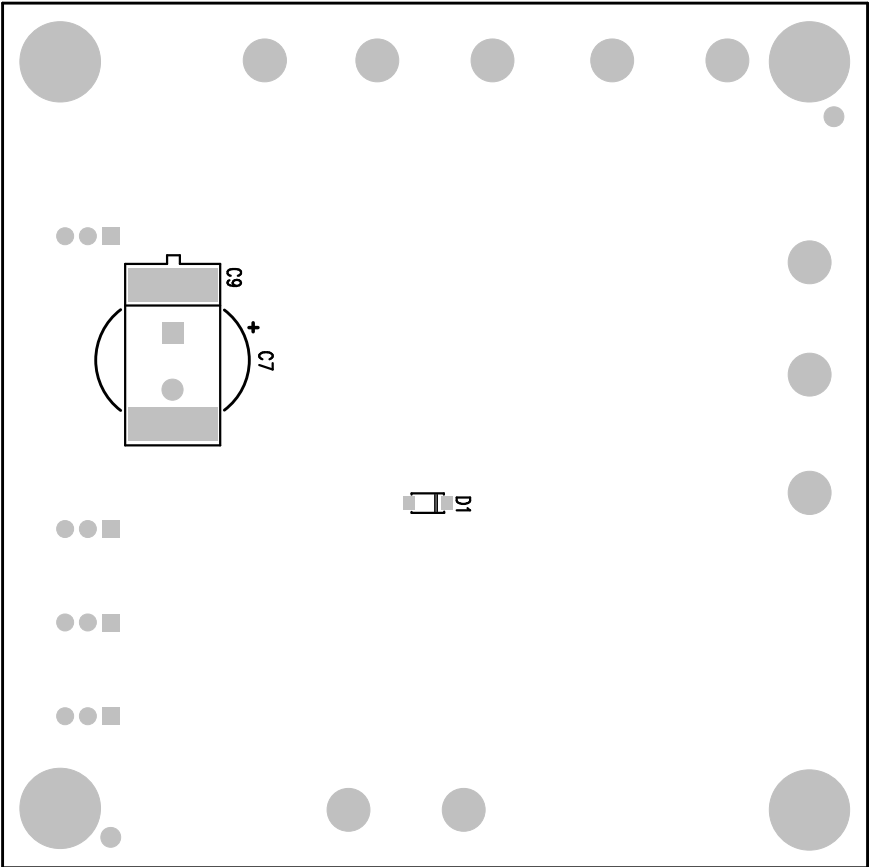



| REVISION HISTORY | | | |
|------------------|-----|-------------|----------------|
| ECO | REV | DESCRIPTION | APPR DATE |
| 1 | 1 | PRODUCTION | JIM N. 4-15-10 |



.9R00 .H3ET 9A3E1J
 BS821 TIUCRIG 0M3D
 3D12 MOTT0B

| | | | | |
|---|--------|---|--|----------|
| APPROVALS | |  <div> 1630 MCCARTHY BLVD MILPITAS, CA 95035 PH: (408)432-1900 WWW.LINEAR.COM LTC CONFIDENTIAL - FOR CUSTOMER USE ONLY </div> | | |
| PCB DES. | HZ | | | |
| APP ENG. | JIM N. | | | |
| | | | | |
| | | | | |
| TITLE: BOTTOM ASSEMBLY DRAWING ULTRALOW VOLTAGE STEP-UP CONVERTER AND POWER MANAGER | | SIZE N/A | IC NO. LTC3108EDE/LTC3108EDE-1 DEMO CIRCUIT 1582B | REV 1 |
| SCALE = NONE | | FILENAME: DC1582B-1.PCB | SHT 2 of 2 | |