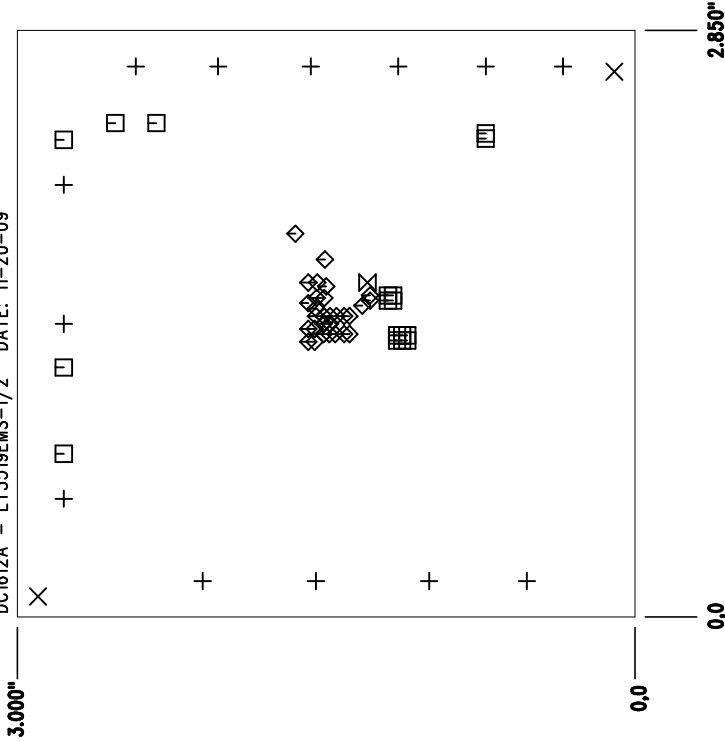


LINEAR TECHNOLOGY  
HIGH FREQUENCY SEPIC LED DRIVER  
DC1612A - LT3519EMS-1/2 DATE: 11-20-09

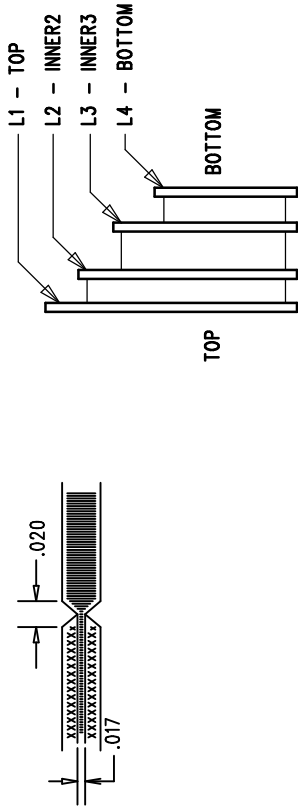




SIZE	QTY	SYM	PLATED	TOL
0.008	29	◇	YES	+/-0.003
0.01	17	□	YES	+/-0.003
0.015	1	⊗	YES	+/-0.003
0.07	2	×	NO	+/-0.003
0.095	13	+	YES	+/-0.003

## NOTES: UNLESS OTHERWISE SPECIFIED

1. FAB PER IPC-A-600.
2. MATERIAL: -EPOXY FIBERGLASS, NEMA GRADE FR-4  
-FINISHED THICKNESS TO BE 0.062" +/- .005"  
-TOTAL OF 4 LAYERS WITH 2 OZ. CU ON THE OUTER LAYERS  
AND 1 OZ. CU ON THE INNER LAYERS.  
-FLAMMABILITY RATING: 94 V-0 MINIMUM.
3. SIZE: CUT TO DIMENSIONS AND TOLERANCES SHOWN.  
0.00" ARE PRIMARY DATUMS.
4. DRILLING: -DRILL HOLES PER SCHEDULE. PLATE THROUGH  
HOLES WITH COPPER, 0.001" THICK MIN.  
-ALL HOLE SIZES ARE SPECIFIED AFTER PLATING.  
-HOLE LOCATION TOLERANCES ARE +/-0.003"  
IN RELATION TO CENTER
5. FINISH: -SMBBC USING LPI BOTH SIDES, COLOR GREEN.  
-GOLD IMMERSION BOTH SIDES.  
(LEAD FREE SOLDER CAN BE USED FOR PROTOTYPE)  
-FOR SILKSCREEN: BOTH SIDES USE WHITE NON-CONDUCTIVE INK.
6. DO NOT ALTER ARTWORK e.g. TO ADD LOGO OR DATE CODE.  
PAD SIZE CAN BE MODIFIED TO MEET END FINISH.
7. PCBs ARE TO BE RoHS COMPLIANT.
8. SCORING FOR PANELIZED PCB:

## LAYER STRUCTURE



<div>UNLESS OTHERWISE SPECIFIED DIMENSIONS ARE IN INCHES TOLERANCES ON ANGLE ±1° 0.1XX" = ±0.01" 0.XXX" = ±0.005" INTERPRET DIM AND TOL PER ASME Y14.5M-1994</div> <div>THIRD ANGLE PROJECTION</div> <div></div>	APPROVALS		<div>LINEAR TECHNOLOGY</div> <div>1630 MCCARTHY BLVD MILPITAS, CA 95035 PH: (408)432-1900 WWW.LINEAR.COM LTC CONFIDENTIAL- FOR CUSTOMER USE ONLY</div>		
	PCB DES.	K.L.	TITLE: FABRICATION DRAWING		
	APP. ENG.	KEITH S.			
				HIGH FREQUENCY SEPIC LED DRIVER	
DO NOT SCALE DRAWING	SCALE = NONE		SIZE	IC NO.	REV.
			N/A	LT3519EMS-1/2 DEMO CIRCUIT 1612A	1
			FILENAME: DC1612A-1.PCB SHT 1 of 1		