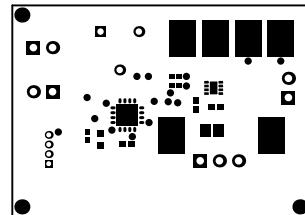
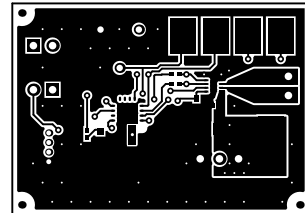


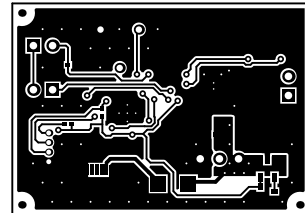
ALL ARTWORK VIEWED FROM TOP SIDE	BOARD #: MDBU016	REV: A	SUN REV: Not In VersionControl
LAYER NAME = Top Overlay	TID #: N/A		
PLOT NAME = Top Overlay	GENERATED : 6/17/2016 10:27:34 AM	TEXAS INSTRUMENTS	



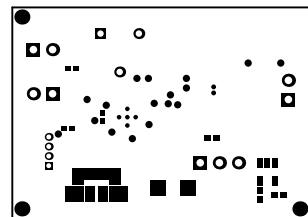
ALL ARTWORK VIEWED FROM TOP SIDE	BOARD #: MDBU016	REV: A	SUN REV: Not In VersionControl
LAYER NAME = Top Solder	TID #: N/A		
PLOT NAME = Top Solder Mask	GENERATED : 6/17/2016 10:27:34 AM	TEXAS INSTRUMENTS	



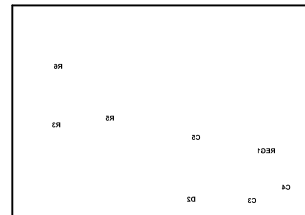
ALL ARTWORK VIEWED FROM TOP SIDE	BOARD #: MDBU016	REV: A	SUN REV: Not In VersionControl
LAYER NAME = Top Layer	TID #: N/A		
PLOT NAME = Top Layer	GENERATED : 6/17/2016 10:27:35 AM	TEXAS INSTRUMENTS	



ALL ARTWORK VIEWED FROM TOP SIDE	BOARD #: MDBU016	REV: A	SUN REV: Not In VersionControl
LAYER NAME = Bottom Layer	TID #: N/A		
PLOT NAME = Bottom Layer	GENERATED : 6/17/2016 10:27:36 AM	TEXAS INSTRUMENTS	

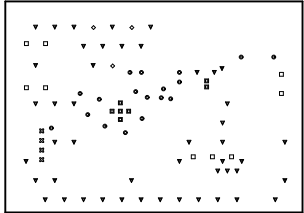


ALL ARTWORK VIEWED FROM TOP SIDE	BOARD #: MDBU016	REV: A	SUN REV: Not In VersionControl
LAYER NAME = Bottom Solder	TID #: N/A		
PLOT NAME = Bottom Solder Mask	GENERATED : 6/17/2016 10:27:37 AM	TEXAS INSTRUMENTS	

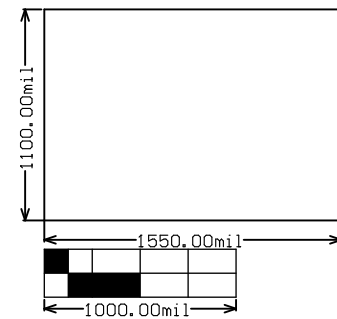


ALL ARTWORK VIEWED FROM TOP SIDE	BOARD #: MDBU016	REV: A	SUN REV: Not In VersionControl
LAYER NAME = Bottom Overlay	TID #: N/A		
PLOT NAME = Bottom Overlay	GENERATED : 6/17/2016 10:27:37 AM		TEXAS INSTRUMENTS

Symbol	Quantity	Finished Hole Size	Plated	Hole Type
■	7	8.00mil (0.203mm)	PTH	Round
▼	47	10.00mil (0.254mm)	PTH	Round
●	18	16.00mil (0.406mm)	PTH	Round
⊗	4	25.59mil (0.650mm)	PTH	Round
◇	3	33.46mil (0.850mm)	PTH	Round
□	9	39.37mil (1.000mm)	PTH	Round
	88 Total			



ALL ARTWORK VIEWED FROM TOP SIDE	BOARD #: MDBU016	REV: A	SUN REV: Not In VersionControl
LAYER NAME = Drill Drawing	TID #: N/A		
PLOT NAME = Drill Drawing	GENERATED : 6/17/2016 10:27:38 AM	TEXAS INSTRUMENTS	



ALL ARTWORK VIEWED FROM TOP SIDE	BOARD #: MDBU016	REV: A	SUN REV: Not In VersionControl
LAYER NAME = M2 Board Dimensions	TID #: N/A		
PLOT NAME = Board Dimensions	GENERATED : 6/17/2016 10:27:39 AM	TEXAS INSTRUMENTS	