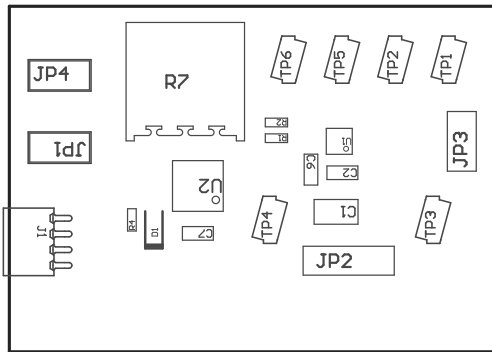


Z21 ■ These assemblies are ESD sensitive, ESD precautions shall be observed.

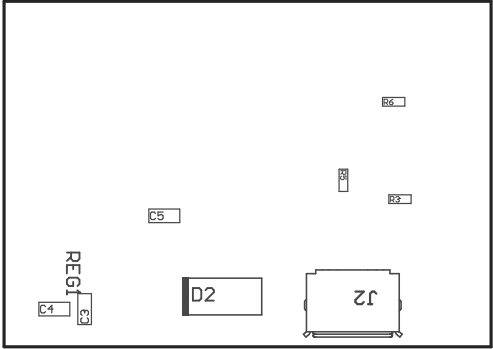
Z22 ■ These assemblies must be clean and free from flux and all contaminants. Use of no clean flux is not acceptable.

Z23 ■ These assemblies must comply with workmanship standards IPC-A-610 Class 2, unless otherwise specified.



COMPONENTS MARKED 'DNP' SHOULD NOT BE POPULATED.
 ASSEMBLY VARIANT: 001

PCB VIEWED FROM TOP SIDE	BOARD #: MDBU016	REV: A	SUN REV: Not In VersionControl
	TID #: N/A		
PLOT NAME = Top Assembly Drawing	GENERATED : 6/17/2016	10:26:52 AM	TEXAS INSTRUMENTS



COMPONENTS MARKED 'DNP' SHOULD NOT BE POPULATED.
 ASSEMBLY VARIANT: 001

PCB VIEWED FROM BOTTOM SIDE	BOARD #: MDBU016	REV: A	SUN REV: Not In VersionControl
	TID #: N/A		
PLOT NAME = Bottom Assembly Drawing	GENERATED : 6/17/2016 10:26:53 AM		TEXAS INSTRUMENTS