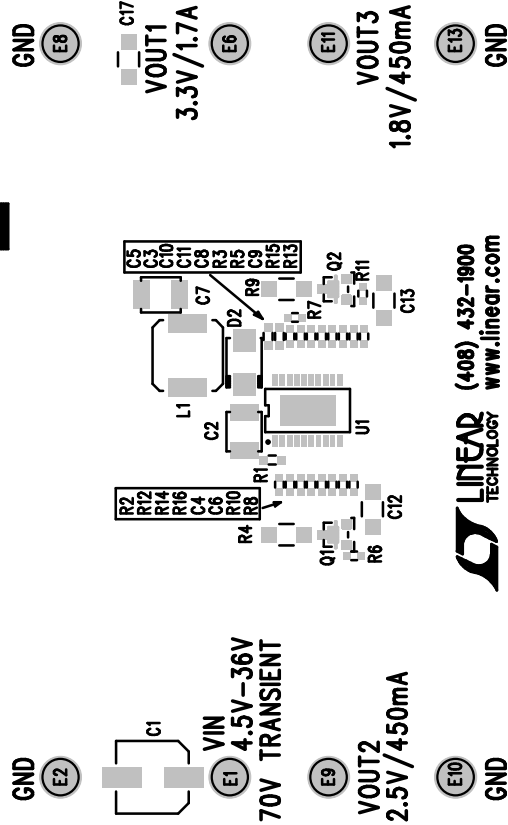


LT3694EFE

MONOLITHIC STEP-DOWN REGULATOR WITH DUAL LDO
DEMO CIRCUIT 1541A-



LINEAR TECHNOLOGY (408) 432-1900
www.linear.com

SS2 SS1 PG00D EN SS3
E5 E4 E14 E12 E3 E7
SS2 SS1 PG00D EN SS3
E5 E4 E14 E12 E3 E7
SS2 SS1 PG00D EN SS3
E5 E4 E14 E12 E3 E7

SYNC
CLOCKOUT
LTC CONFIDENTIAL-
FOR CUSTOMER USE ONLY

LINEAR TECH. CORP.
DEMO CIRCUIT 1541A
MONOLITHIC STEP-DOWN REGULATOR WITH DUAL LDO
DC1541A-LT3694 FAMILY
DATE: 8-18-10

REVISION HISTORY

ECO	REV	DESCRIPTION	APPR	DATE
	2	PRODUCTION	EDWIN L.	8-18-10

NOTES: UNLESS OTHERWISE SPECIFIED

1. WORKMANSHIP SHALL BE IN ACCORDANCE WITH IPC-A-610.
2. ASSEMBLY PROCESS SHALL INCLUDE: REFLOW SOLDER TOP SIDE SMD.
3. PARTS TO OMIT WILL BE SPECIFIED ON THE BILL OF MATERIALS. LOCATIONS OF OMITTED PARTS SHALL BE FREE OF SOLDER. MASK THE SOLDER STENCIL WHERE SMT PARTS ARE OMITTED.
4. INSTALL SHUNTS AS SHOWN ON ASSY DRAWING.
5. DEPADELIZE BOARDS AFTER ASSEMBLY AND ROUTE-OUT THE BREAKOUT TABS ON FOUR SIDES OF THE BOARD EDGE.
6. DO NOT APPLY ANY KIND OF ASSEMBLY STAMP OR QA STAMP TO ANY BOARD.
7. MARK EACH ASSEMBLY TYPE WITH BLACK PERMANENT MARKER AS SHOWN IN TABLE BELOW:

ASSY	U1	R12	E12
-A	LT3694EFE	10K	SYNC
-B	LT3694EFE-1	OPEN	CLOCKOUT

APPROVALS

PCB DES.	HZ
APP ENG.	EDWIN L.
SCALE = NONE	

1630 MCCARTHY BLVD
MILPITAS, CA 95035
PH: (408)432-1900
www.linear.com
LTC CONFIDENTIAL-
FOR CUSTOMER USE ONLY

LINEAR TECHNOLOGY

TITLE: TOP ASSEMBLY DRAWING

MONOLITHIC STEP-DOWN REGULATOR WITH DUAL LDO

SIZE	IC NO.	FAMILY	REV.
N/A	LT3694	DEMO CIRCUIT 1541A-A/B	2
FILENAME:	DC1541A-2.PCB	SHT 1 OF 1	