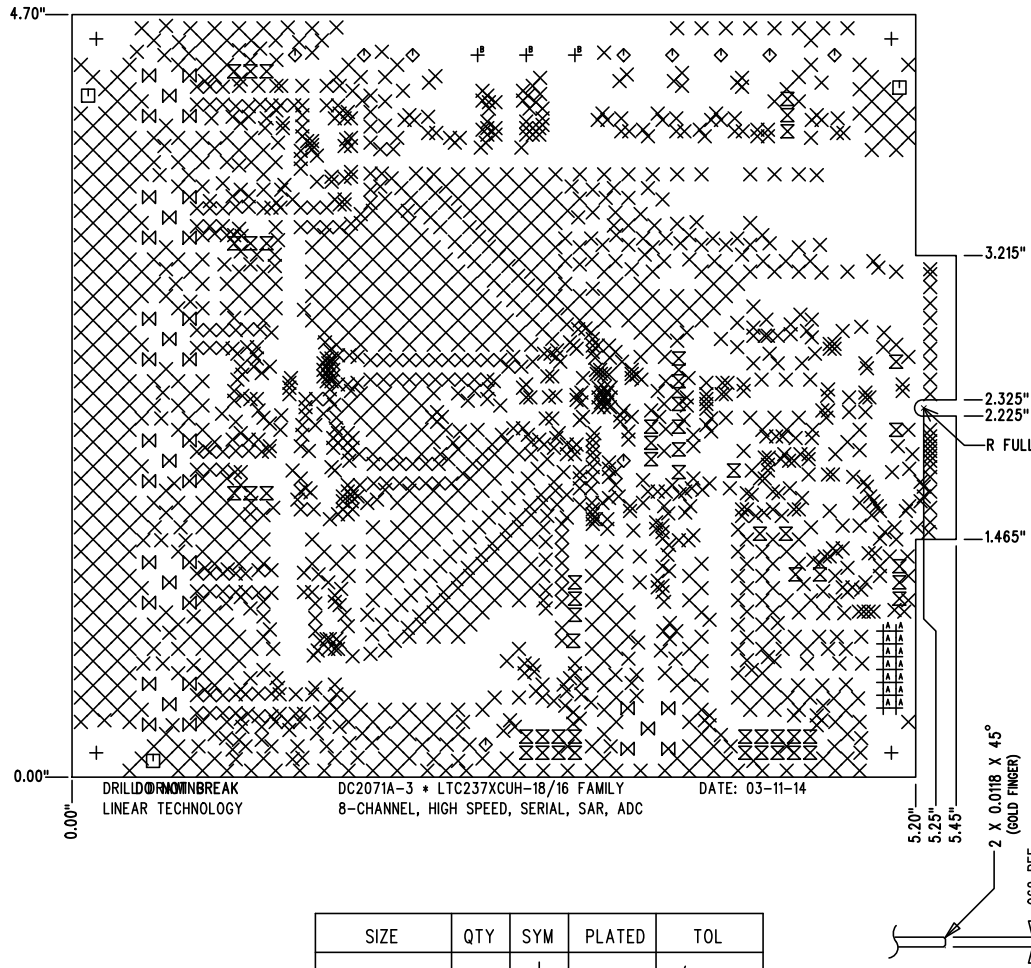
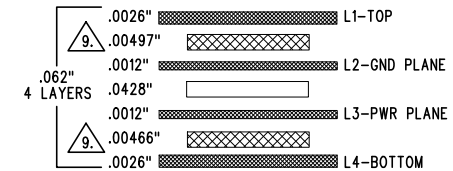


REVISION HISTORY				
ECO	REV	DESCRIPTION	APP. ENG.	DATE
-	3	3RD PROTOTYPE	GUY H.	03-11-14



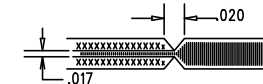
SIZE	QTY	SYM	PLATED	TOL
0.19	4	+	NO	+/-0.003"
0.008	1856	×	YES	+/-0.003"
0.07	3	□	NO	+/-0.003"
0.063	10	◇	YES	+/-0.003"
0.035	53	⊗	YES	+/-0.003"
0.055	35	⊗ ^A	YES	+/-0.003"
0.04	14	⊕ ^A	YES	+/-0.003"
0.094	3	⊕ ^B	YES	+/-0.003"

LAYER STRUCTURE



NOTES: UNLESS OTHERWISE SPECIFIED

- FAB PER IPC-A-600.
- MATERIAL: -LEAD FREE ASSEMBLY COMPLIANT, ISOLA FR-370HR OR EQUIVALENT.
-FINISHED THICKNESS TO BE 0.062" +/- .005"
-TOTAL OF 4 LAYERS WITH 2 OZ. CU ON THE OUTER LAYERS AND 1 OZ. CU ON THE INNER LAYERS.
-FLAMMABILITY RATING: 94 V-0 MINIMUM.
- SIZE: CUT TO DIMENSIONS AND TOLERANCES SHOWN.
0.00" ARE PRIMARY DATUMS.
- DRILLING: -DRILL HOLES PER SCHEDULE. PLATE THROUGH HOLES WITH COPPER, 0.001" THICK MIN.
-ALL HOLE SIZES ARE SPECIFIED AFTER PLATING.
-HOLE LOCATION TOLERANCES ARE +/-0.003" IN RELATION TO CENTER
- FINISH: -SMOBC USING LPI BOTH SIDES, COLOR GREEN.
-GOLD IMMERSION BOTH SIDES.
-FOR SILKSCREENS: USE WHITE NON-CONDUCTIVE INK.
- DO NOT ALTER ARTWORK e.g. TO ADD LOGO OR DATE CODE.
PAD SIZE CAN BE MODIFIED TO MEET END FINISH.
- PCBS ARE TO BE RoHS COMPLIANT.
- SCORING FOR PANELIZED PCB (PRODUCTION FAB ONLY):



- SUBJECT TO CHANGE BY MANUFACTURER, DEPENDING ON DIELECTRIC CONSTANT DEVIATIONS. PLEASE CONSULT LTC.
- FINGER AREA: GOLD PLATE TO MIN. OF 0.00003 INCHES.
PER MIL-G-45204, TYP II, CL1, GRADE C, OVER 0.0002 INCHES
LOW STRESS NICKEL PER QQ-N-290, CL2.

UNLESS OTHERWISE SPECIFIED		APPROVALS		 1630 MCCARTHY BLVD MILPITAS, CA 95035 PH: (408)432-1900 www.linear.com LTC CONFIDENTIAL- FOR CUSTOMER USE ONLY	
DIMENSIONS ARE IN INCHES		PCB DES.	KIM T.		
TOLERANCES:		APP ENG.	GUY H.	TITLE: FABRICATION DRAWING	
0.XX" = ±0.01"				8-CHANNEL, HIGH SPEED, SERIAL, SAR, ADC	
0.XXX" = ±0.005"				SIZE IC NO. LTC237XCUH-18/16 FAMILY	
INTERPRET DIM AND TOL				N/A DEMO CIRCUIT 2071A	
PER ASME Y14.5M-1994				REV 3	
THIRD ANGLE PROJECTION				FILENAME: DC2071A-3.PCB	
		SCALE = NONE		SHT 1 OF 1	