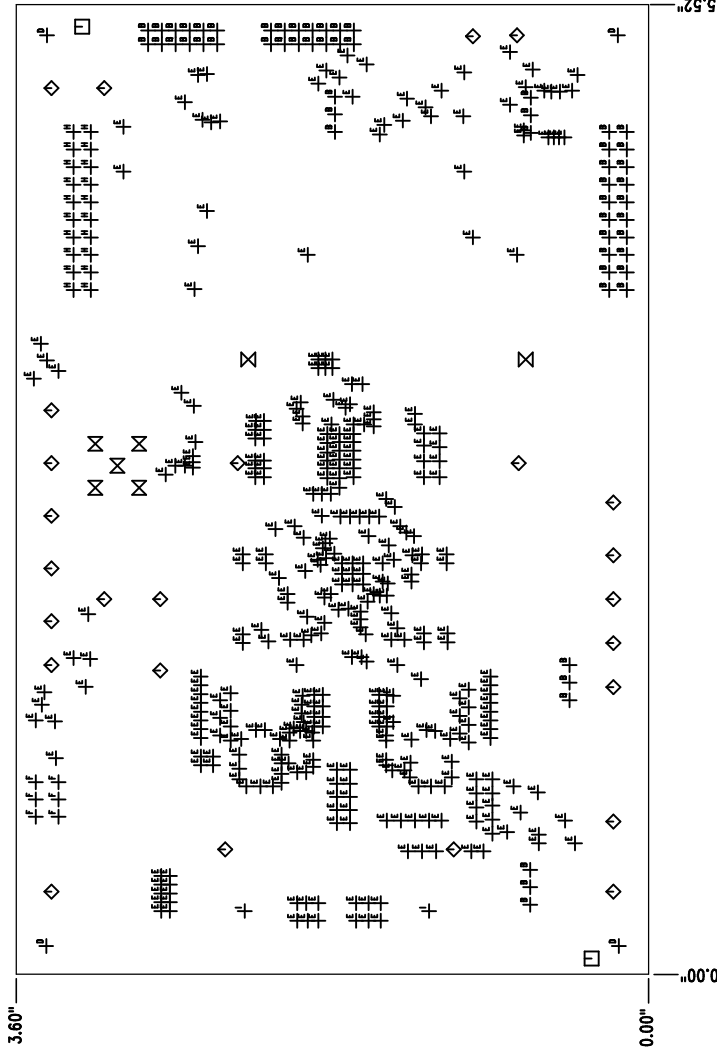
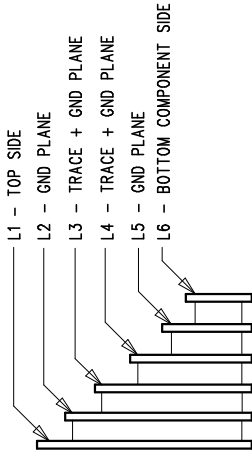


SHOWN FROM TOP SIDE

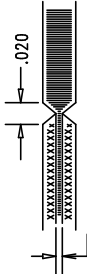


LAYER STRUCTURE



NOTES: UNLESS OTHERWISE SPECIFIED

1. FAB PER IPC-A-600.
2. MATERIAL: -LEAD FREE ASSEMBLY COMPLIANT, ISOLA FR-370HR OR EQUIVALENT.  
-FINISHED THICKNESS TO BE 0.062" +/- .005"  
-TOTAL OF 6 LAYERS WITH 2 OZ. CU ON THE OUTER LAYERS  
AND 1 OZ. CU ON THE INNER LAYERS.  
-FLAMMABILITY RATING: 94 V-0 MINIMUM.
3. SIZE: CUT TO DIMENSIONS AND TOLERANCES SHOWN.  
0.00 ARE PRIMARY DATUMS.
4. DRILLING: -DRILL HOLES PER SCHEDULE. PLATE THROUGH HOLES WITH COPPER, 0.001" THICK MIN.  
-ALL HOLE SIZES ARE SPECIFIED AFTER PLATING.  
-HOLE LOCATION TOLERANCES ARE +/-0.003" IN RELATION TO CENTER
5. FINISH: -SMOBC USING LPI BOTH SIDES, COLOR GREEN.  
-GOLD IMMERSION BOTH SIDES.  
-FOR SILKSCREEN: BOTH SIDES USE WHITE NON-CONDUCTIVE INK.
6. DO NOT ALTER ARTWORK e.g. TO ADD LOGO OR DATE CODE.  
PAD SIZE CAN BE MODIFIED TO MEET END FINISH.
7. PCBs ARE TO BE RoHS COMPLIANT.
8. SCORING FOR PANELIZED PCB:



UNLESS OTHERWISE SPECIFIED  
DIMENSIONS ARE IN INCHES  
TOLERANCES:  
0.XX" = +/-0.01"  
0.XXX" = +/-0.005"  
INTERPRET DIM AND TOL  
PER ASME Y14.5M-1994  
THIRD ANGLE PROJECTION



APPROVALS

PCB DES.	HZ
APP ENG.	YI S.
SIZE	IC NO.
N/A	LTC3880EJ
SCALE = NONE	DEMO CIRCUIT 1753A

**LINEAR TECHNOLOGY**  
1530 MCARTHY BLVD  
MILPITAS, CA 95035  
PH: (408)332-9000  
www.linear.com  
FOR CUSTOMER USE ONLY

TITLE: FABRICATION DRAWING  
DUAL-PHASE SINGLE OUTPUT STEP-DOWN DC/DC  
CONVERTER WITH DIGITAL POWER MANAGEMENT

REV  
1  
FILENAME: DC1753A-1.PCB  
SHT 1 OF 1