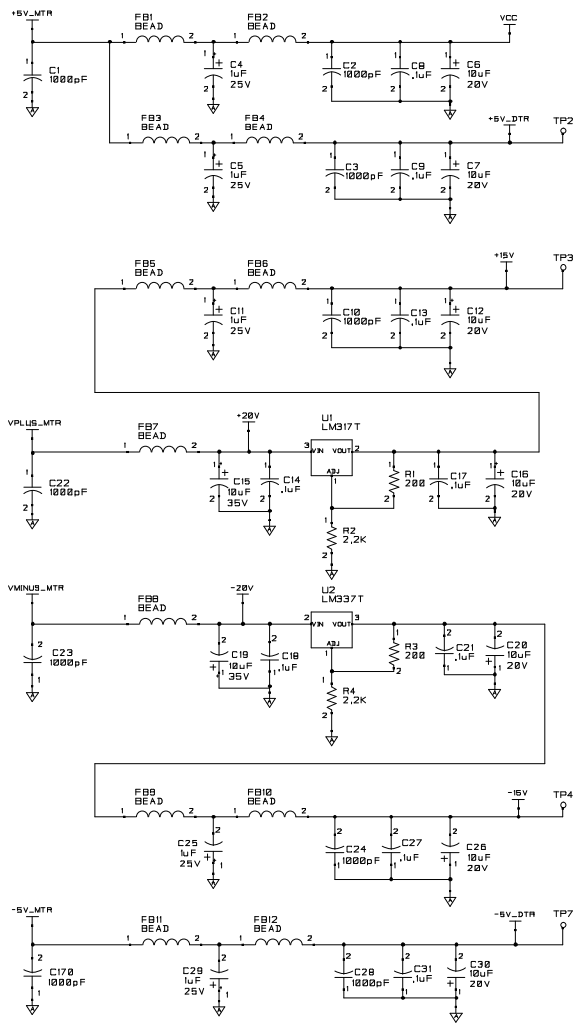
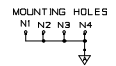
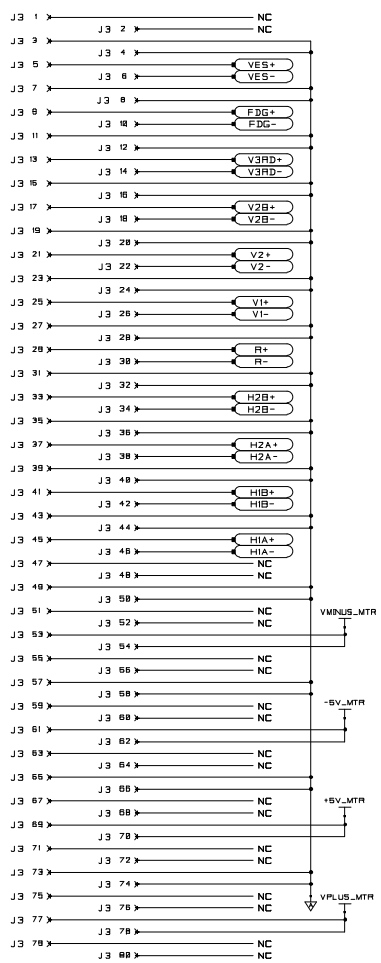
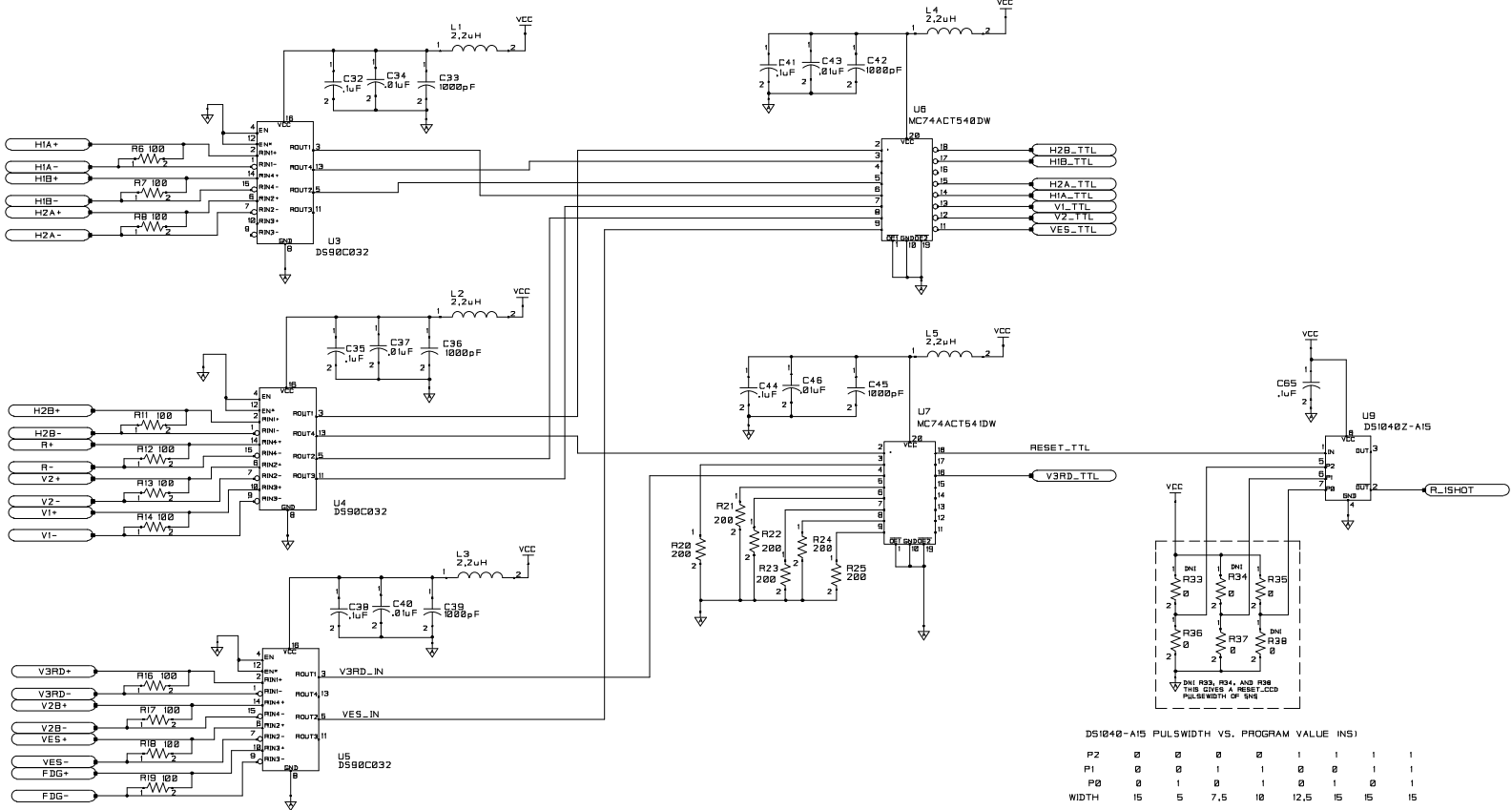


REVISIONS				
ZONE	SYM	DESCRIPTION	DATE	APPROVAL



UNLESS OTHERWISE SPECIFIED				MATERIAL		DIMENSIONS APPLY AFTER FINISH		ON Semiconductor	
DIN, ARE IN				FINISH		WHERE TOTAL TOLERANCE IS .015		NAME	
2 PL DEC TOL. 1				✓		INCHES OR LESS AND ON ALL		KAI-1003	
3 PL DEC TOL. 1						TOLERANCES APPLY BEFORE FINISH		IMAGER BOARD	
ANGULAR TOL. 1						DIR P.L.SCHAEFER 11/29/01		REV	
BLUF ROUGHNESS								1A	
EDGES								SIZE	
INSIDE RADI								DNG NO.	
NEXT ASY				APPLICATION		DIVISION FROM WHICH THIS		1E9768	
USE ON				QUANTITY REQD		PLATE/PLATING/ROUGHNESS		SCALE	
NEXT ASY						ELECT. NOT BE WITHIN STATES		PROGRAM CADSTAR	
NEXT ASY						DIMENSIONAL TOLERANCES		SHEET 1 OF 6	
						REL DATE		PS-0121, Rev 1	

REVISIONS				
ZONE	SYM	DESCRIPTION	DATE	APPROVAL

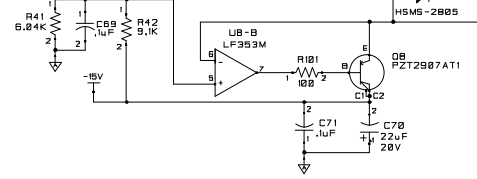
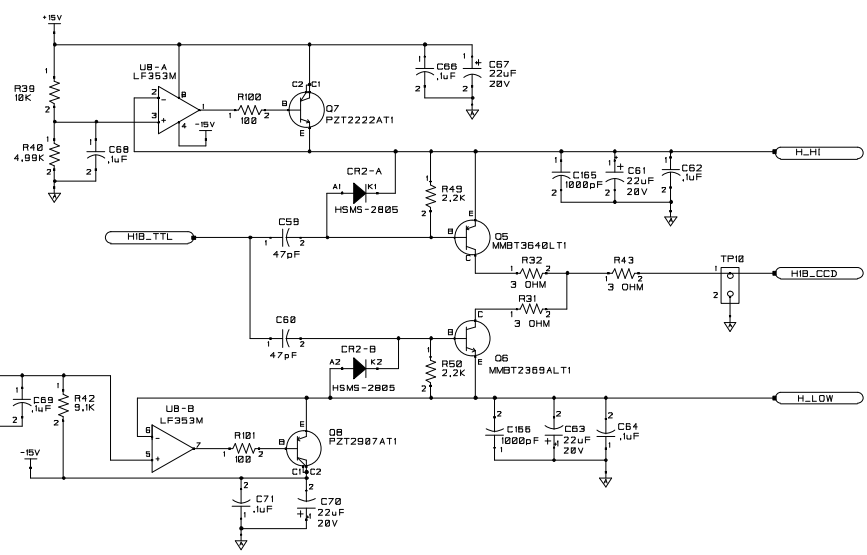
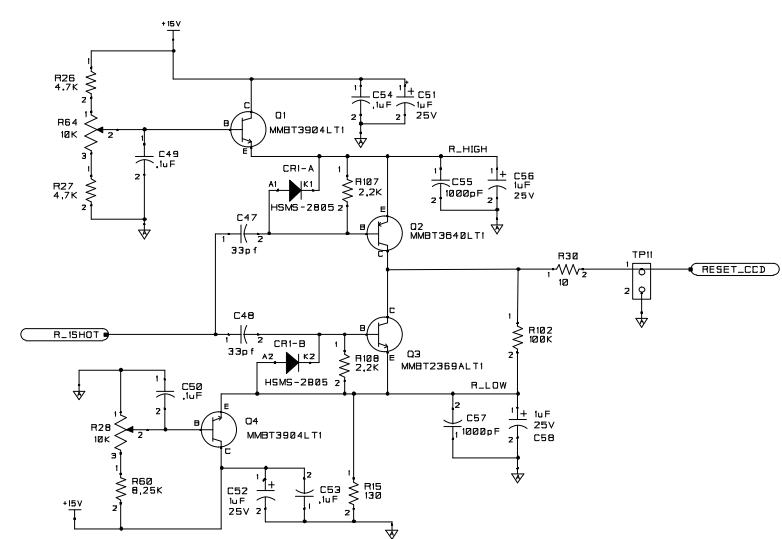
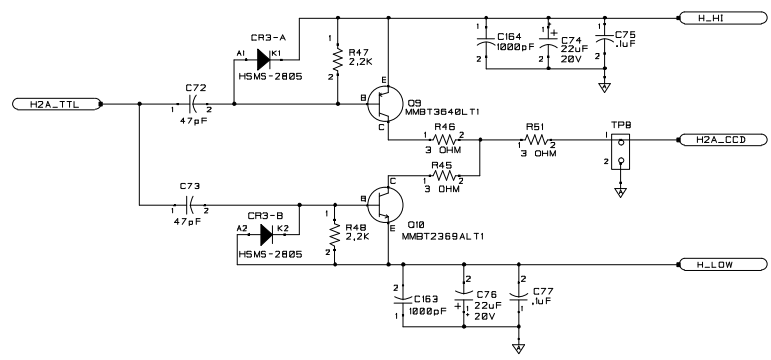


DS1040-A15 PULSWIDTH VS. PROGRAM VALUE (NS)

P2	0	0	0	0	1	1	1	1
P1	0	0	1	1	0	0	1	1
P0	0	1	0	1	0	1	0	1
WIDTH	15	5	7.5	10	12.5	15	15	15

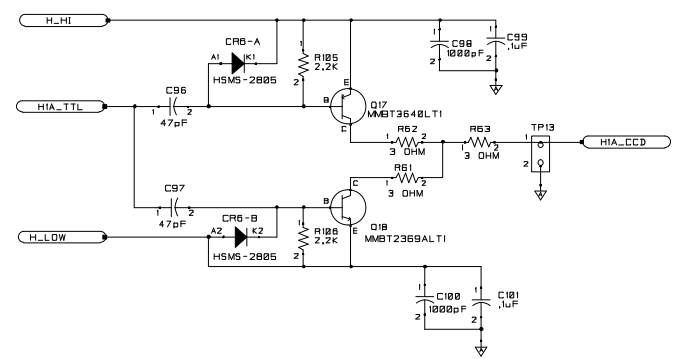
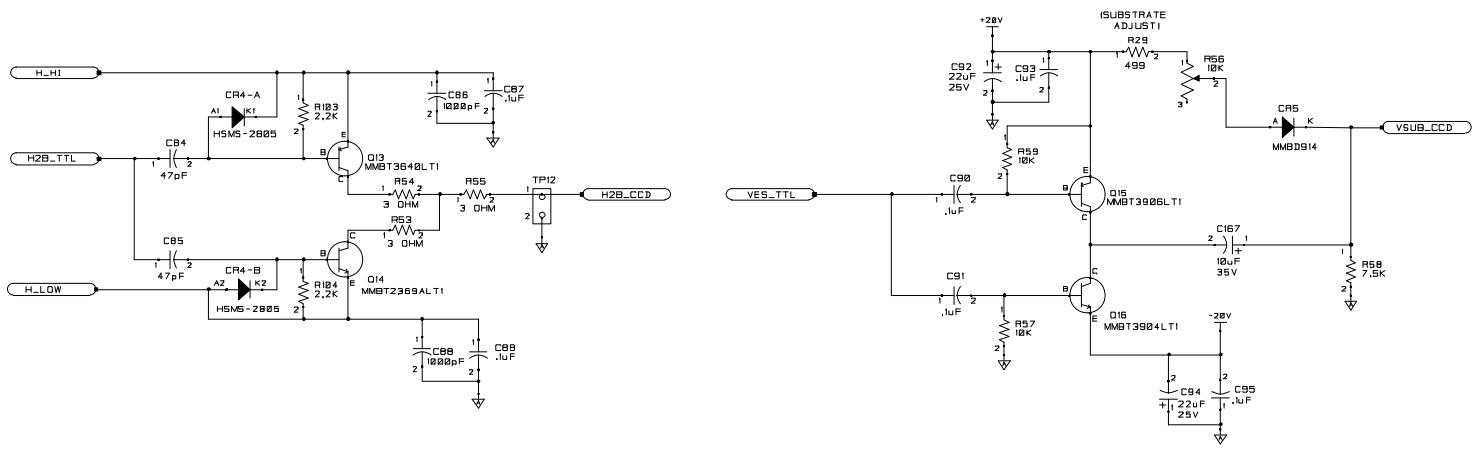
DR	SIZE D	CODE 32153	DWG NO. 1E9768	REV 1A
REL DATE	SCALE	PROGRAM CADSTAR	SHEET 2 OF 6	

REVISIONS				
ZONE	SYM	DESCRIPTION	DATE	APPROVAL



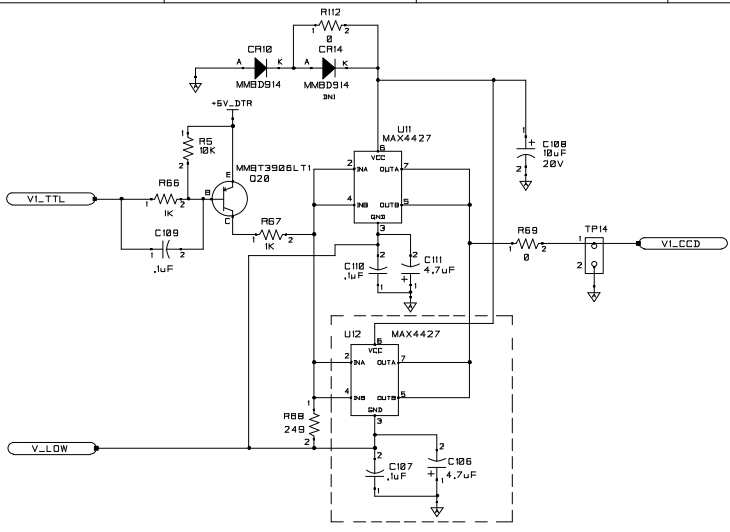
DR	SIZE	CODE	DWG. NO.	REV
REL. DATE	SCALE	32153	1E9768	1A
		PROGRAM	CADSTAR	SHEET 3 OF 6

REVISIONS				
ZONE	SYM	DESCRIPTION	DATE	APPROVAL

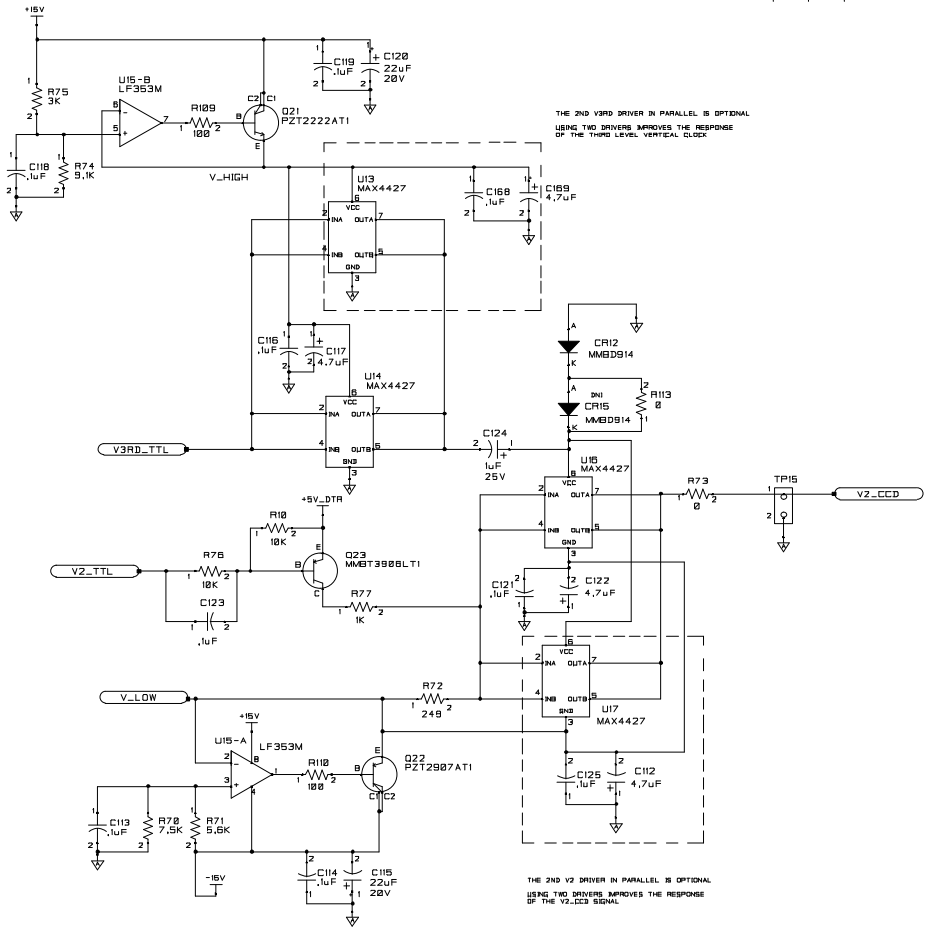


DR	SIZE	CODE	DWG. NO.	REV
REL. DATE	D	32153	1E9768	1A
	SCALE		PROGRAM CADSTAR	SHEET 4 OF 6

REVISIONS				
ZONE	SYM	DESCRIPTION	DATE	APPROVAL



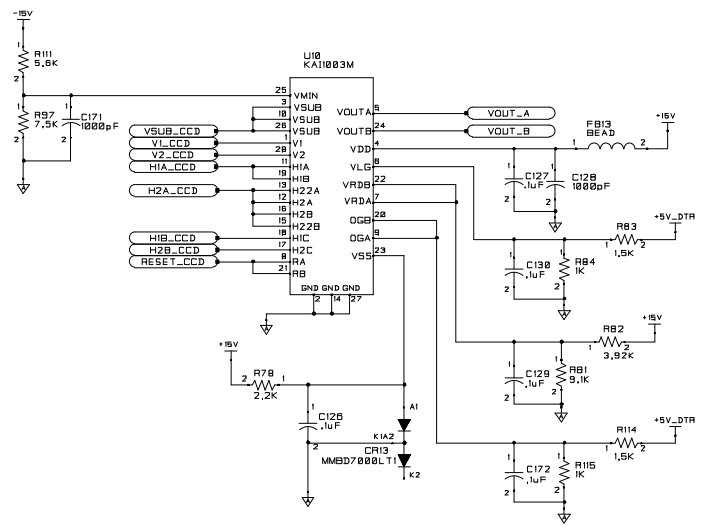
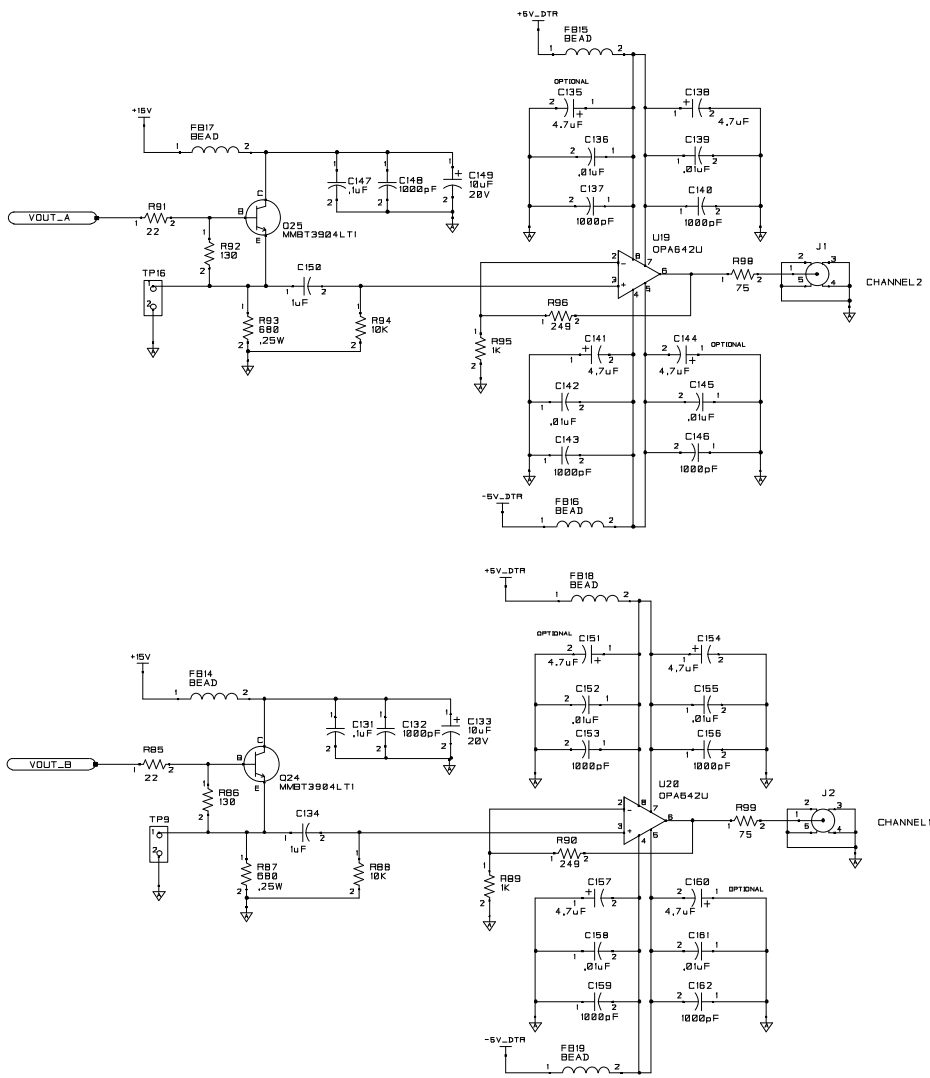
THE 2ND V1 DRIVER IN PARALLEL IS OPTIONAL
USING TWO DRIVERS IMPROVES THE RESPONSE
OF THE V1_VCC SIGNAL



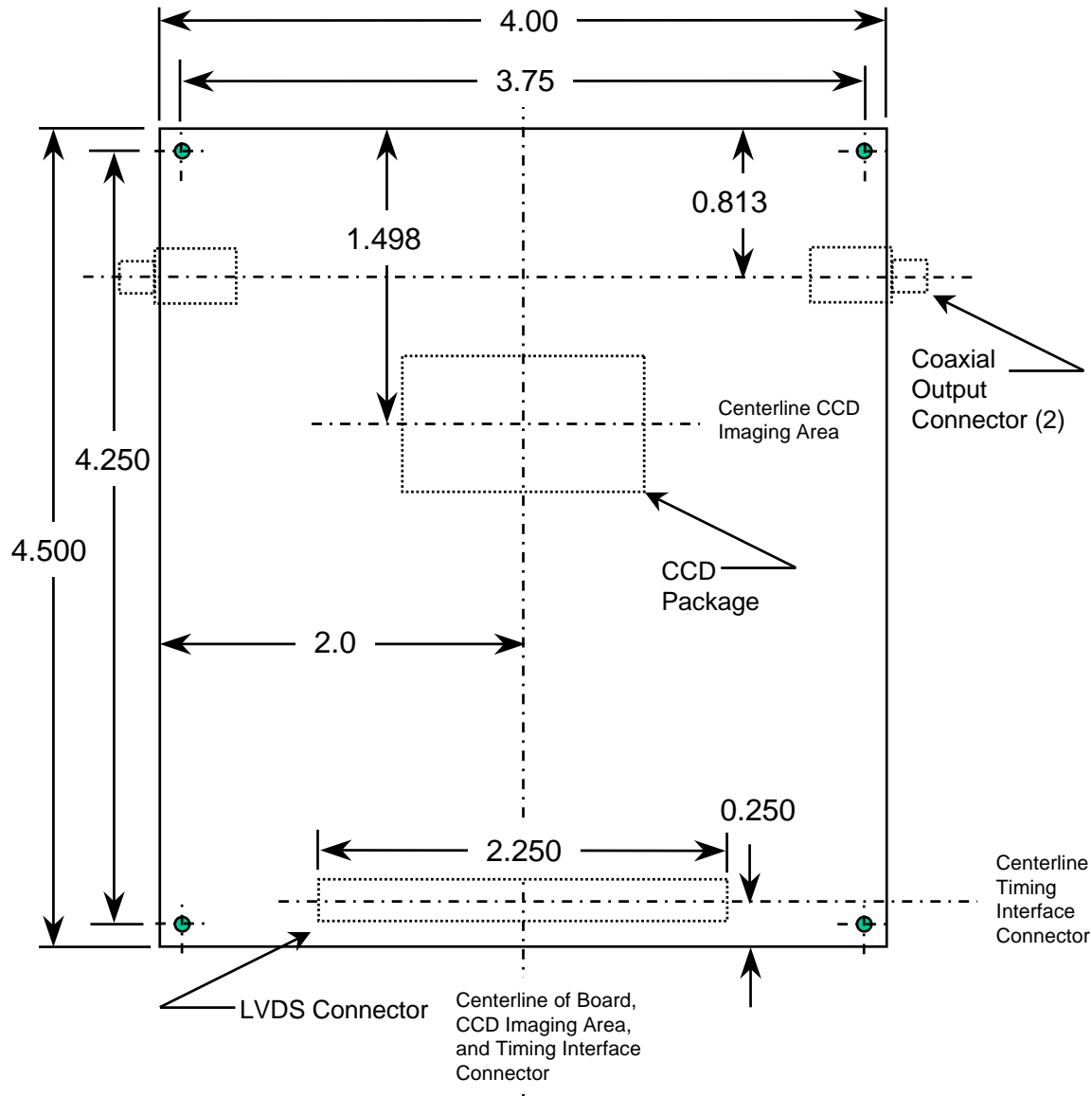
THE 2ND V2 DRIVER IN PARALLEL IS OPTIONAL
USING TWO DRIVERS IMPROVES THE RESPONSE
OF THE V2_VCC SIGNAL

DR	SIZE D	CODE 32153	DWG NO. 1E9768	REV 1A
REL DATE	SCALE	PROGRAM CADSTAR	SHEET 5 OF 6	

REVISIONS				
ZONE	SYM	DESCRIPTION	DATE	APPROVAL



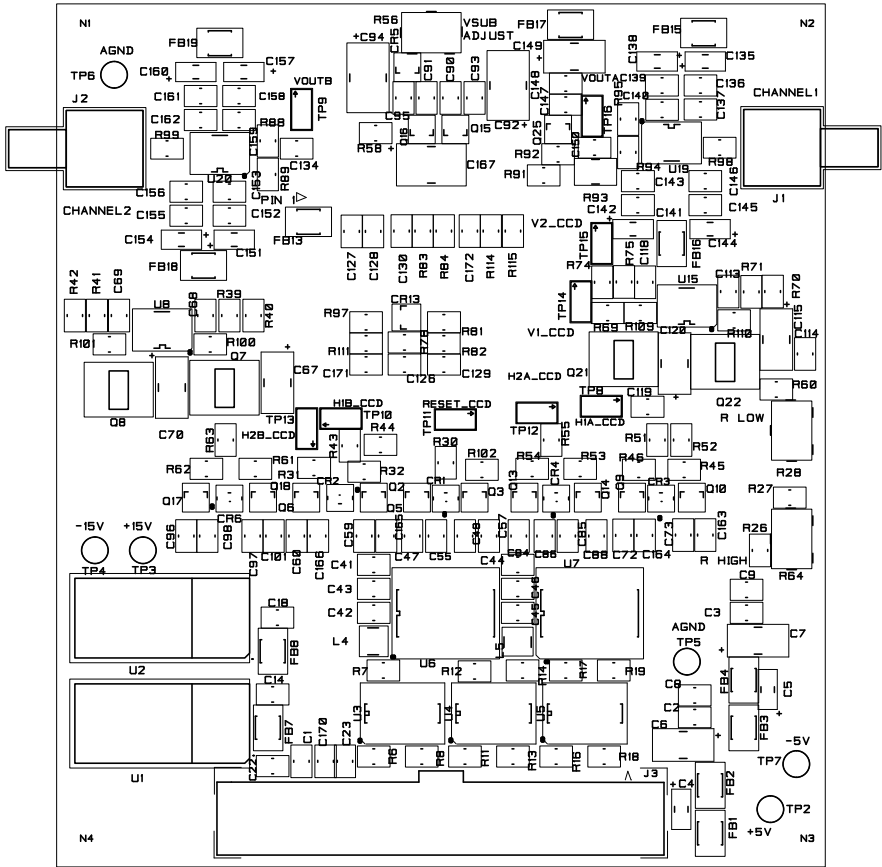
DR	SIZE D	CODE 32153	DWG NO. 1E9768	REV 1A
REL DATE	SCALE	PROGRAM CADSTAR	SHEET 6 OF 6	



1E9768 PRINTED CIRCUIT BOARD
 KAI-1003
 IMAGER BOARD MECHANICAL DRAWING
 7/02/2001

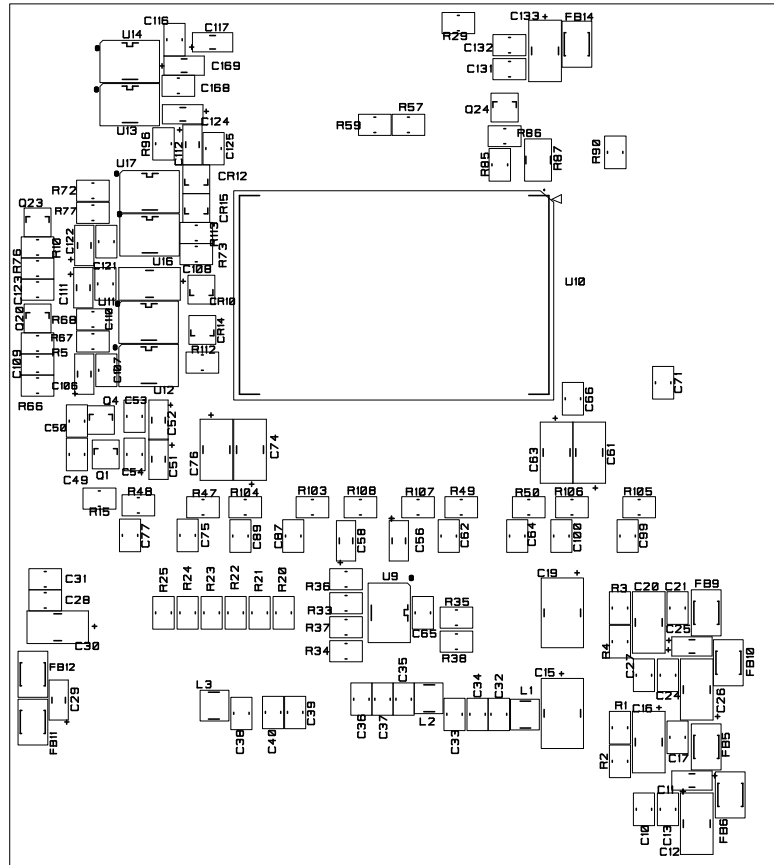
N5

N6



N7

PRIMARY SIDE SILKSCREEN



SECONDARY SIDE ASSY

BOARD NAME: KAI1003 IMAGER BOARD					
BOARD # 1E9768					
PARTS LIST REV1A					
DATE: 10/31/2001					
KEMD #	MANUFACTURER	PART NUMBER	DESCRIPTION	QTY	REF
1E1112	COILCRAFT	1008CS-222XKBC	INDUCTOR, SMT, 2.2UH	5	L1-5
233152	FAIR RITE	2743019447	FERRITE BEAD	19	FB1-19
586506	ON SEMICONDUCTOR	MMBD7000LT1	DIODE	1	CR13
902510	HEWLET PACK	HSMS-2805-T31	DUAL DIODE	5	CR1-4, CR6
616293	ON SEMICONDUCTOR	MMBD914LT1	DIODE	3	CR5, CR10, CR12
4B4317	ON SEMICONDUCTOR	MMBT2369ALT1	SW TRANSISTOR NPN	5	Q3, Q6, Q10, Q14, Q18
236307	ON SEMICONDUCTOR	MMBT3640LT1	TRANSISTOR PNP	5	Q2, Q5, Q9, Q13, Q17
616292	ON SEMICONDUCTOR	MMBT3904LT1	G.P. TRANSISTOR NPN	5	Q1, Q4, Q16, Q24-Q25
233838	ON SEMICONDUCTOR	MMBT3906LT1	G.P. TRANSISTOR PNP	3	Q15, Q20, Q23
960472	ON SEMICONDUCTOR	PZT2222AT1	SW TRANSISTOR NPN	2	Q7, Q21
960471	ON SEMICONDUCTOR	PZT2907AT1	SW TRANSISTOR PNP	2	Q8, Q22
254471	AVX	08055A102JATMA	CAP 1000PF,50VDC,5%	36	C1-3, C10, C22-24, C28, C33, C36, C39 C42, C45, C55, C57, C86, C88, C98, C100 C128, C132, C137, C140, C143, C146 C148, C153, C156, C159, C162-166, C170-171
7B9716	KEMET	C0805C104K5RAC	CAP .1UF,50VDC,10%	51	C8-9, C13-14, C17-18, C21, C27, C31-32 C35, C38, C41, C44, C49-50, C53-54, C62 C64-66, C68-69, C71, C75, C77, C87 C89-91, C93, C95, C99, C101, C104 C109-110, C113-114, C116, C118-119 C121, C123, C126-127, C129-131, C147 C34, C37, C40, C43, C46, C136, C139 C142, C145, C152, C158, C161
980646	KEMET	C0805C103K5RAC	CAP .01UF,50VDC,10%	13	C59-60, C72-73, C84-85, C96-97 C47-48 C4-5, C11, C25, C29, C51-52, C56, C58, C124 C138, C141, C154, C157 C6-7, C12, C16, C20, C26, C30, C108 C133, C149 C15, C19, C167 C61, C63, C67, C70, C74, C76, C115, C120 C92, C94 C111, C117, C122 C134, C150 R28, R56, R64 R35-37, R69, R73, R112-113 R5, R10, R39, R57, R59, R88, R94 R6-8, R11-14, R16-19, R100-101, R109-110 R66-67, R77, R84, R89, R95, R115 R102 R29 R15, R86, R92 R83, R114 R1, R3, R20-25 R2, R4, R47-50, R78, R103-108 R85, R91 R68, R72, R90, R96 R31-R32, R43, R45-46, R51, R53-55, R61-63 R75 R41 R87, R93 R98-99 R8 R42, R74, R81 R26-27 R71, R111 R76 R40 R58, R70, R76, R97 R60 R102
755551	AVX	08051A470JATMA	CAP 47PF,50VDC,5%	8	
4B3897	AVX	0805SA330JATMA	CAP 33PF,50VDC,5%	2	
785076	HITACHI	TMC-MA1E105MTR	CAP 1UF,25VDC,20%	10	
335666	KEMET	T491A475M010AS	CAP 4.7UF,10VDC,20%	4	
258541	HITACHI	TMCMC1D106MTR	CAP 10UF,20VDC,20%	10	
770251	KEMET	T491D106K035AS	CAP 10UF,35VDC,10%	3	
8B0987	AVX	TAJC226M020R	CAP 22UF,20VDC,20%	8	
7B9280	AVX	TPSD226K025R0200	CAP 22UF,25VDC,10%	2	
4B4495	KEMET	T491B475M020AS	CAP 4.7UF,20VDC,20%	3	
7B9655	AVX	1206YC105MATRA	CAP 1UF,16V,20%	2	
770026	BOURNS	3266W-1-103	10K POT, .5W	3	
257516	DALE ELECTRONICS	CRCW0805-000	RESISTOR 0 OHM	7	
233981	DALE ELECTRONICS	CRCW08051002FT	RESISTOR 10K, 1/10W,1%	7	
980690	DALE ELECTRONICS	CRCW0805101JT	RESISTOR 100, 1/10W,5%	15	
250796	DALE ELECTRONICS	CRCW0805102JT	RESISTOR 1K, 1/10W,5%	7	
254478	DALE ELECTRONICS	CRCW0805104JT	RESISTOR 100K, 1/10W,5%	1	
902559	DALE ELECTRONICS	CRCW0805-4990-FT	RESISTOR 499 OHM 1%	1	
941226	DALE ELECTRONICS	CRCW08051300FT	RESISTOR 130, 1/10W,1%	3	
917658	DALE ELECTRONICS	CRCW0805-1501-FT	RESISTOR 1.5K OHM 1%	2	
783957	DALE ELECTRONICS	CRCW08052000-FT	RESISTOR 200, 1/10W,1%	8	
257083	DALE ELECTRONICS	CRCW08052201-FT	RESISTOR 2.2K, 1/10W,1%	13	
255345	DALE ELECTRONICS	CRCW0805220FT	RESISTOR 22, 1/10W,5%	2	
902504	DALE ELECTRONICS	CRCW08052490FT	RESISTOR 249, 1/10W,1%	4	
903960	DALE ELECTRONICS	CRCW0805302JT	RESISTOR 3 OHM, 1/10W,5%	12	
232539	DALE ELECTRONICS	CRCW0805-302-JT	RESISTOR 3K, 1/10W, 5%	1	
255503	DALE ELECTRONICS	CRCW08056041FT	RESISTOR 6.04K, 1/10W,1%	1	
739757	DALE ELECTRONICS	CRCW1210681JT	RESISTOR 680, 1/4W,5%	2	
954554	DALE ELECTRONICS	CRCW080575R0-FT	RESISTOR 75, 1/10W,1%	2	
901768	DALE ELECTRONICS	CRCW0805-3921-FT	RESISTOR 3.92 KOHM 1%	1	
253950	DALE ELECTRONICS	CRCW0805912JT	RESISTOR 9.1K, 1/10W,5%	3	
253549	DALE ELECTRONICS	CRCW0805-472-JT	RESISTOR 4.7K, 1/10W, 5%	2	
258531	DALE ELECTRONICS	CRCW0805-562-JT	RESISTOR 5.6K, 1/10W, 5%	2	
255504	DALE ELECTRONICS	CRCW08057500FT	RESISTOR 7.5K, 1/10W,1%	1	
255502	DALE ELECTRONICS	CRCW0805-4991-FT	RESISTOR 4.99K, 1/10W, 1%	1	
960211	DALE ELECTRONICS	CRCW0805-752-JT	RESISTOR 7.5K, 1/10W, 5%	4	
2B1397	DALE ELECTRONICS	CRCW0805-8251-FT	RESISTOR 8.25K, 1/10W 1%	1	
254478	DALE ELECTRONICS	CRCW0805104JT	RESISTOR 100K, 1/10W,5%	1	

232841	DALE ELECTRONICS	CRCW0805100JT	RESISTOR 10, 1/10W, 5%	1	R30	
691935	NATIONAL SEMI	DS90C032TM	LVDS LINE RECEIVER	3	U3-5	
734408	NATIONAL SEMI	LF353M	DUAL JFET OPAMP	2	U8, U15	
498310	NATIONAL SEMI	LM317T	VOLTAGE REGULATOR	1	U1	
241054	NATIONAL SEMI	LM337T	VOLTAGE REGULATOR	1	U2	
4B4249	MAXIM	MAX4427CSA	DUAL MOSFET DRIVERS	3	U11, U14, U16	
954091	ON SEMICONDUCTOR	MC74ACT540DW	OCTAL BUFFER INVERTING	1	U6	
903888	ON SEMICONDUCTOR	MC74ACT541DW	OCTAL BUFFER INVERTING	1	U7	
5C2040	BURR BROWN	OPA642U	OPAMP	2	U19-20	
	MILL MAX	7149311631018	CCD SINGLE PIN SOCKETS	28	U10 HOLES	
999979	AMP	104549-9	CONN 80 PIN	1	J3	
911244	AMP	221014-1	SMB, RIGHT ANGLE	2	J1-2	
901613	COMPONENT CORP.	TP-104-01-00	TEST POINT, BLACK	2	TP5-6	
901614	COMPONENT CORP.	TP-104-01-02	TEST POINT, RED	4	TP2-4, TP7	
DO NOT INSTALL:						
R33, R34, R38, R52, R44						
CR14, CR15						
TP8-16						
C135, C144, C151, C160, C106-107, C112, C125, C168-169						
U12, U13, U17						
DO NOT INSTALL (using KSC-1000 Based Timing Boards):						
U9						
5C2045	DALLAS SEMI	DS1040Z-A15	PROG 1SHOT	1	U9	
	[Install shorting resistor (0-ohm) between pads for pins 1 and 2 of U9]					