

6

5

4

3

2

1

D

C

B

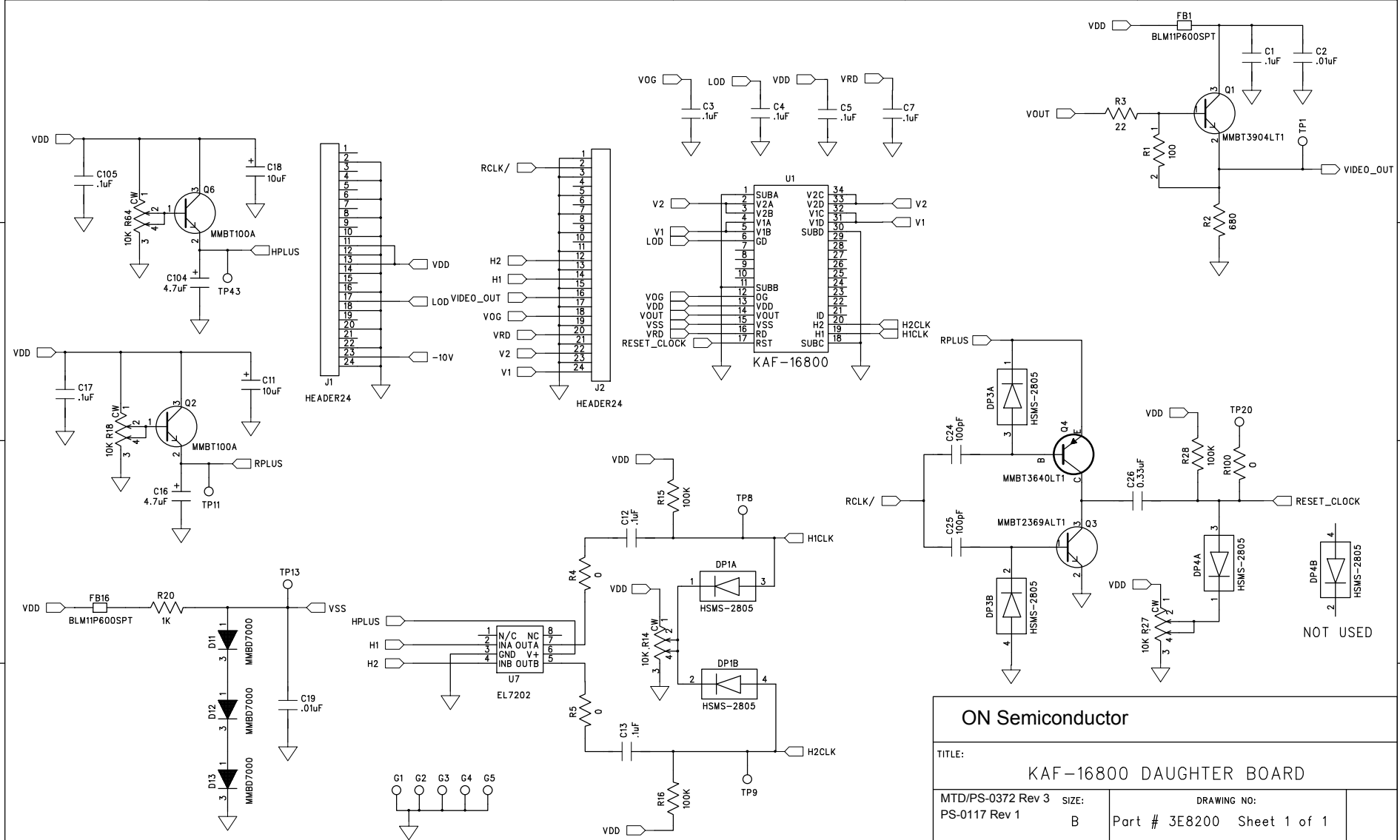
A

D

C

B

A



<b>ON Semiconductor</b>	
TITLE: <b>KAF-16800 DAUGHTER BOARD</b>	
MTD/PS-0372 Rev 3 PS-0117 Rev 1	SIZE: B DRAWING NO: Part # 3E8200 Sheet 1 of 1
DRAWN BY: J. MAYNARD	APPROVED BY: R. BROLLY

KAF 16800  
Imager BOARD:  
TOPSIDE PARTS

S11/M11 Imager  
3E8200 REV 1

<u>PART</u>	<u>DESCRIPTION</u>	<u>KEMD #</u>	<u>PACKAGE</u>	<u>QTY</u>	<u>BOARD REFERENCE #</u>	<u>MANUFACTURER</u>
1E9511				1	Printed Circuit Board	PCB
BLM11P600SPT	FERRITE BEAD	6C4490	FERRITE 0603	1	FB1	MURATA ERIE
06035C103KAT4A	.01uF 50VDC	4B3745	CAP 0603	2	C2,C19	AVX
0603YC104MAT4A	.1uF 16V	4B4011	CAP 0603	3	C1,C17,C105	AVX
TAJC475K035R	4.7uF 35VDC	4B4495	CAP C CASE	2	C16,C104	AVX
TMC-MC1D106MTR	10 uF 20V	258541	CAP C CASE	2	C11,C18	HITACHI
MMBD7000LT1	DIODE	586506	SOT-23	1	D12	MOTOROLA
HSMS-2805	DIODE	902510	SOT-143	2	DP3-4	HEWLETT-PACKARD
3266X-1-103	10K POT	44F3542	THRU-HOLE	4	R14,R18,R27,R64	BOURNS
3-347996-0	CCD SOCKET		THRU-HOLE SIP			AMP
5-826926-0	SINGLE PIN		THRU-HOLE	10	TP8-9,TP13,TP20,TP43,G1-G5	AMP

BOTTOMSIDE PARTS

<u>PART</u>	<u>DESCRIPTION</u>	<u>KEMD #</u>	<u>PACKAGE</u>	<u>QTY</u>	<u>BOARD REFERENCE #</u>	<u>MANUFACTURER</u>
BLM11P600SPT	FERRITE BEAD	6C4490	FERRITE 0603	1	FB16	MURATA ERIE
06035A101JAT4A	100pF 50VDC	4B3748	CAP 0603	2	C24-25	AVX
0603YC104MAT4A	.1uF 16V	4B4011	CAP 0603	6	C3-C5,C7,C12-13	AVX
0805YC334KATMA	0.33uF 16VDC	7B9273	CAP 0805	1	C26	AVX
TAJC475K035R	4.7uF 35VDC	4B4495	CAP C CASE	1	C16	AVX
MMBD7000LT1	DIODE	586506	SOT-23	2	D11,D13	MOTOROLA
HSMS-2805	DIODE	902510	SOT-143	1	DP1	HEWLETT-PACKARD
MMBT2369ALT1	TRANSISTOR	4B4317	SOT-23	1	Q3	MOTOROLA
MMBT100A	TRANSISTOR	273733	SOT-23	2	Q2,Q6	FAIRCHILD
MMBT3640LT1	TRANSISTOR	236307	SOT-23	1	Q4	MOTOROLA

MMBT3904LT1	TRANSISTOR	616292	SOT-23	1	Q1	MOTOROLA
0 OHM			RES 0603	3	R4-R5,R100	
CRCW0603-220-JT	22 OHM 5%	7B9290	RES 0603	1	R3	DALE
CRCW0603-101-JT	100 OHM 5%	2B1421	RES 0603	1	R1	DALE
CRCW0603-681-JT	680 OHM 5%	9B0269	RES 0603	1	R2	DALE
CRCW0603-102-JT	1K OHM 5%	2B1422	RES 0603	1	R20	DALE
CRCW0603-1003-FT	100K OHM 1%	2B4323	RES 0603	3	R15-16,R28	DALE
EL7202CS	DRIVER	2E5291	S0IC-8	1	U7	ELANTEC
BCS-112-L-D-TE	CONNECTOR		HEADER 24	2	J1,J2	SAMTEC