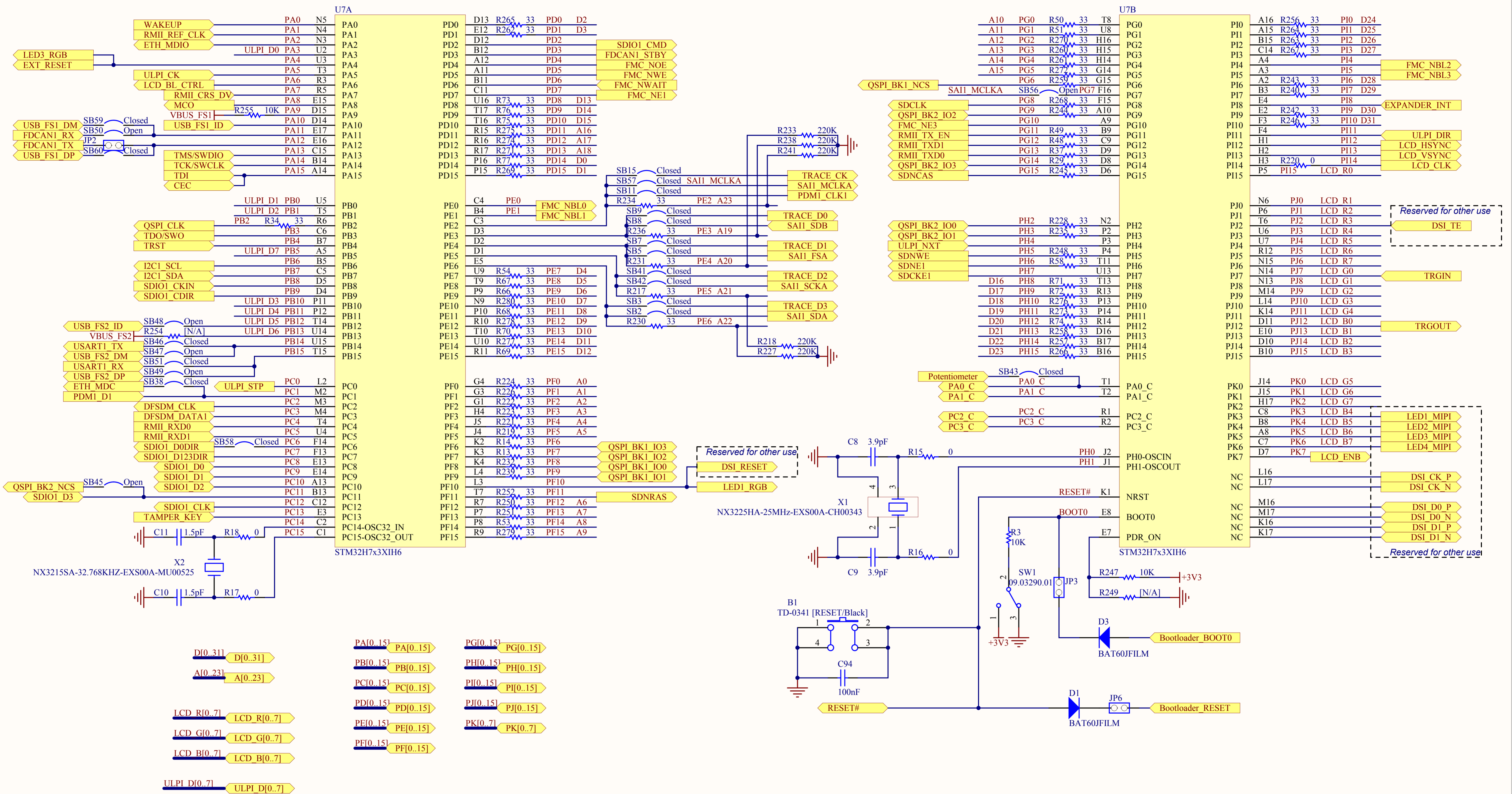
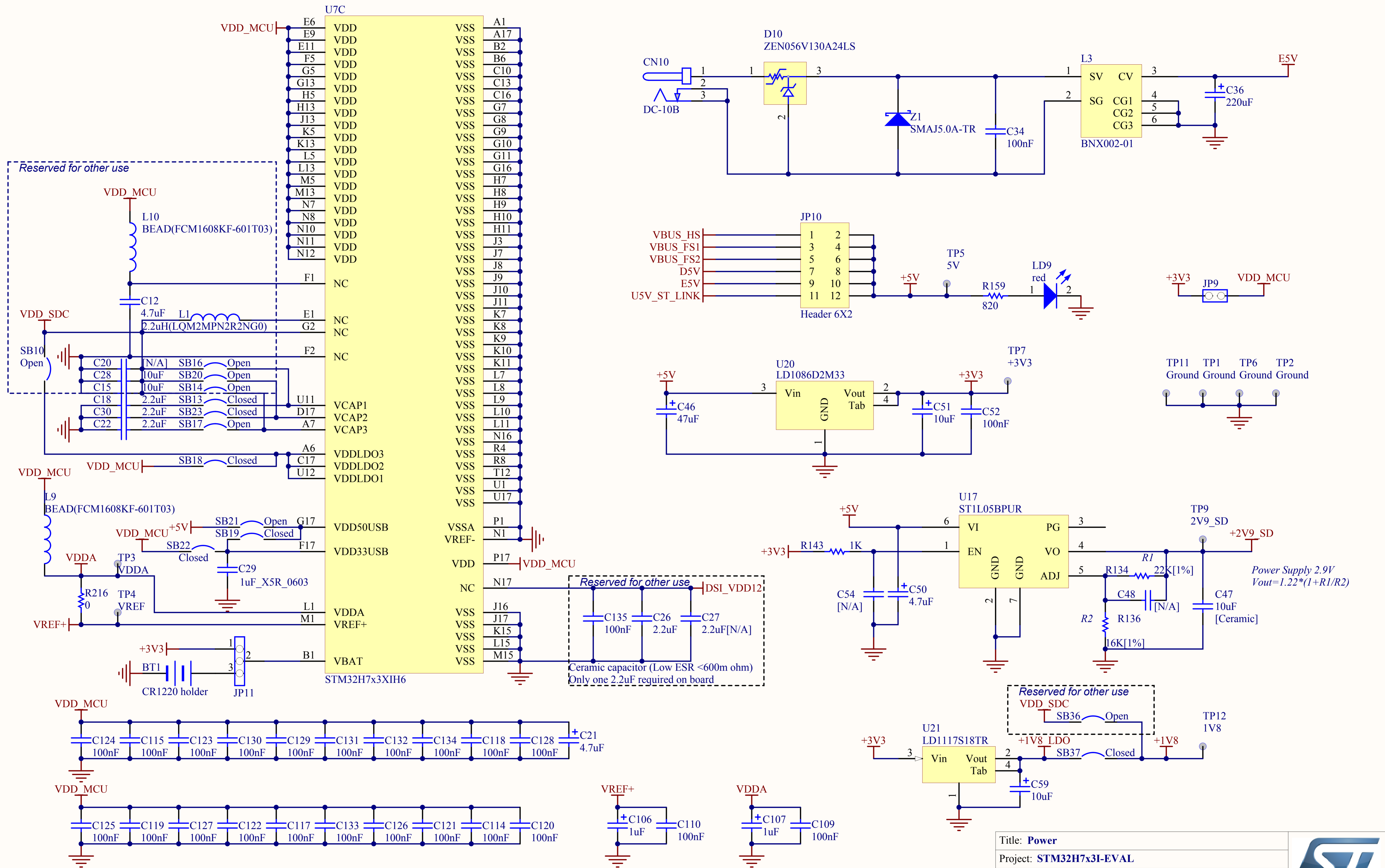
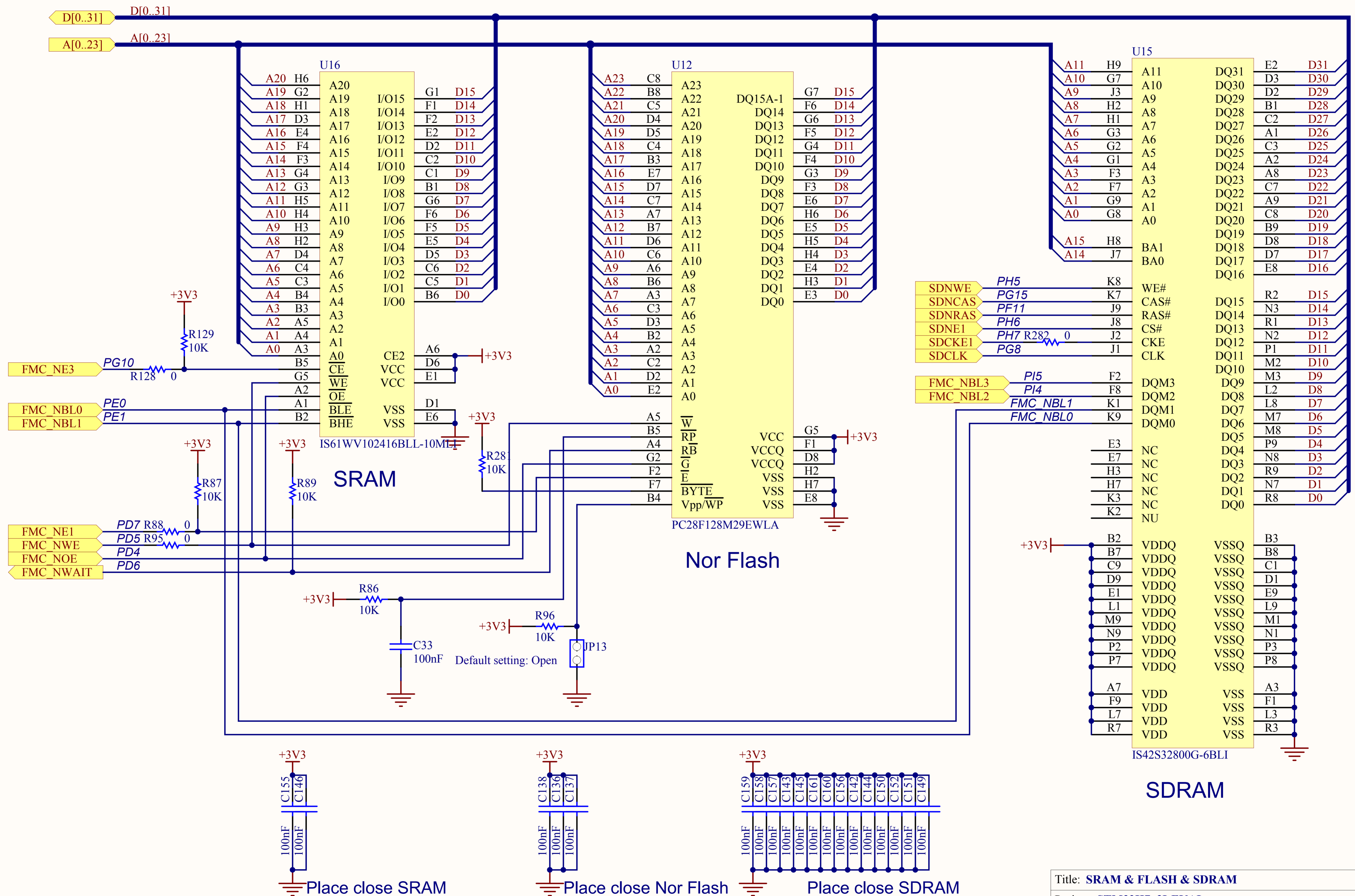


Note:1. Text in italic placed on a wire doesn't correspond to net name. It just helps to identify rapidly MCU IO related to this wire.
2.R100/R103/R107's pull up power is changed from 3V3 to VDD_IO of U13 from A.1 to B.1
3.CAN_RX is connected to PA11 instead of PA9 and CAN_TX is connected to PA12 instead of PA10 from A.1 to B.1
4.SAI1_MCLKA is connected to PE2 instead of PG7 by default from A.1 to B.1
5.IRDA is removed from A.1 to B.1
6.LEDs' connection are changed, in order to avoid conflict with RGB LCD signals from A.1 to B.1
7. Updated to STM32H7x31 from B.1 to B.2







Place close SRAM

Place close Nor Flash

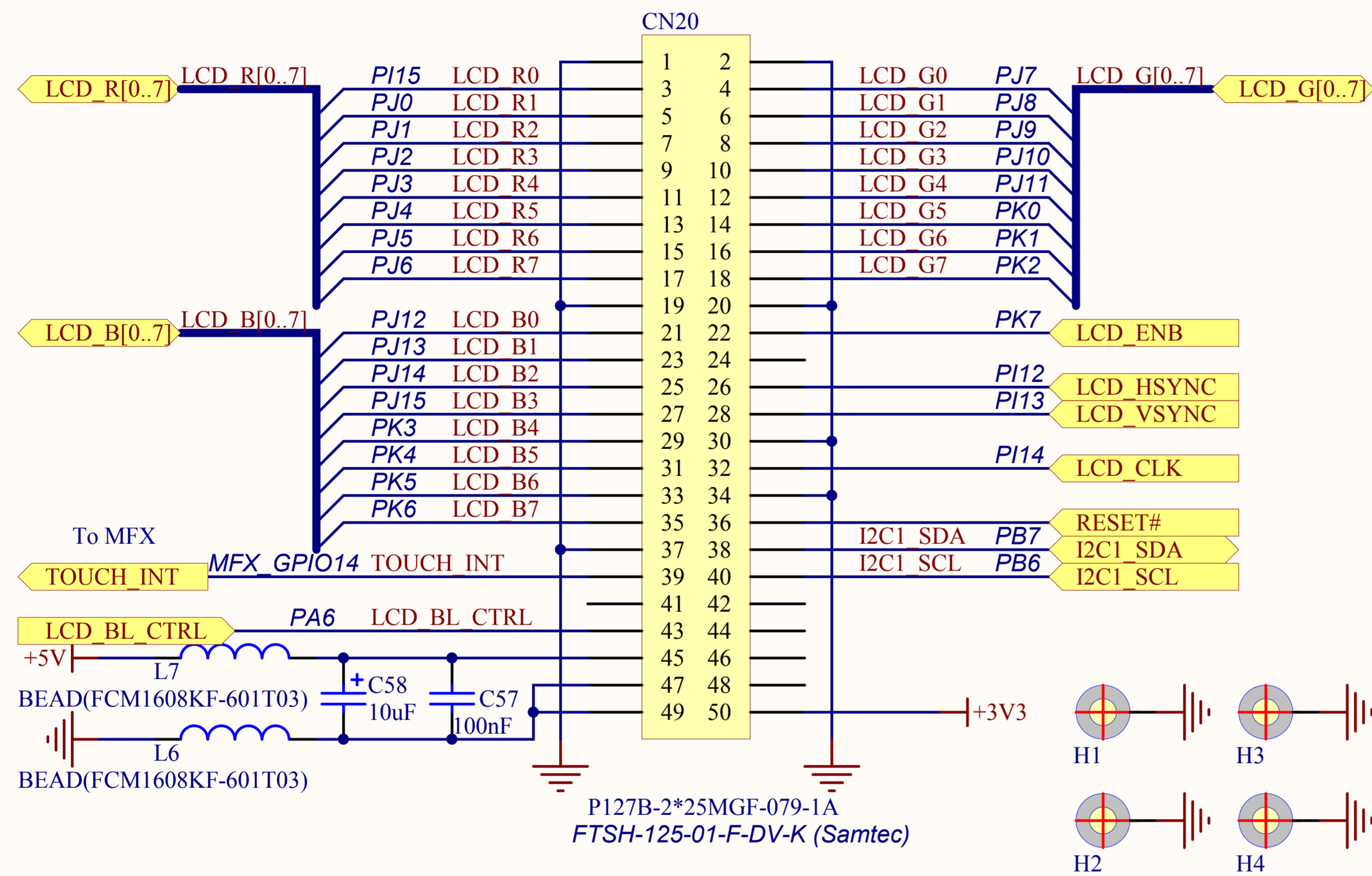
Place close SDRAM

Title: SRAM & FLASH & SDRAM		
Project: STM32H7x3I-EVAL		
Size: A4	Reference: MB1246	Revision: B.2
Date: 6/9/2017	Sheet: 4 of 17	

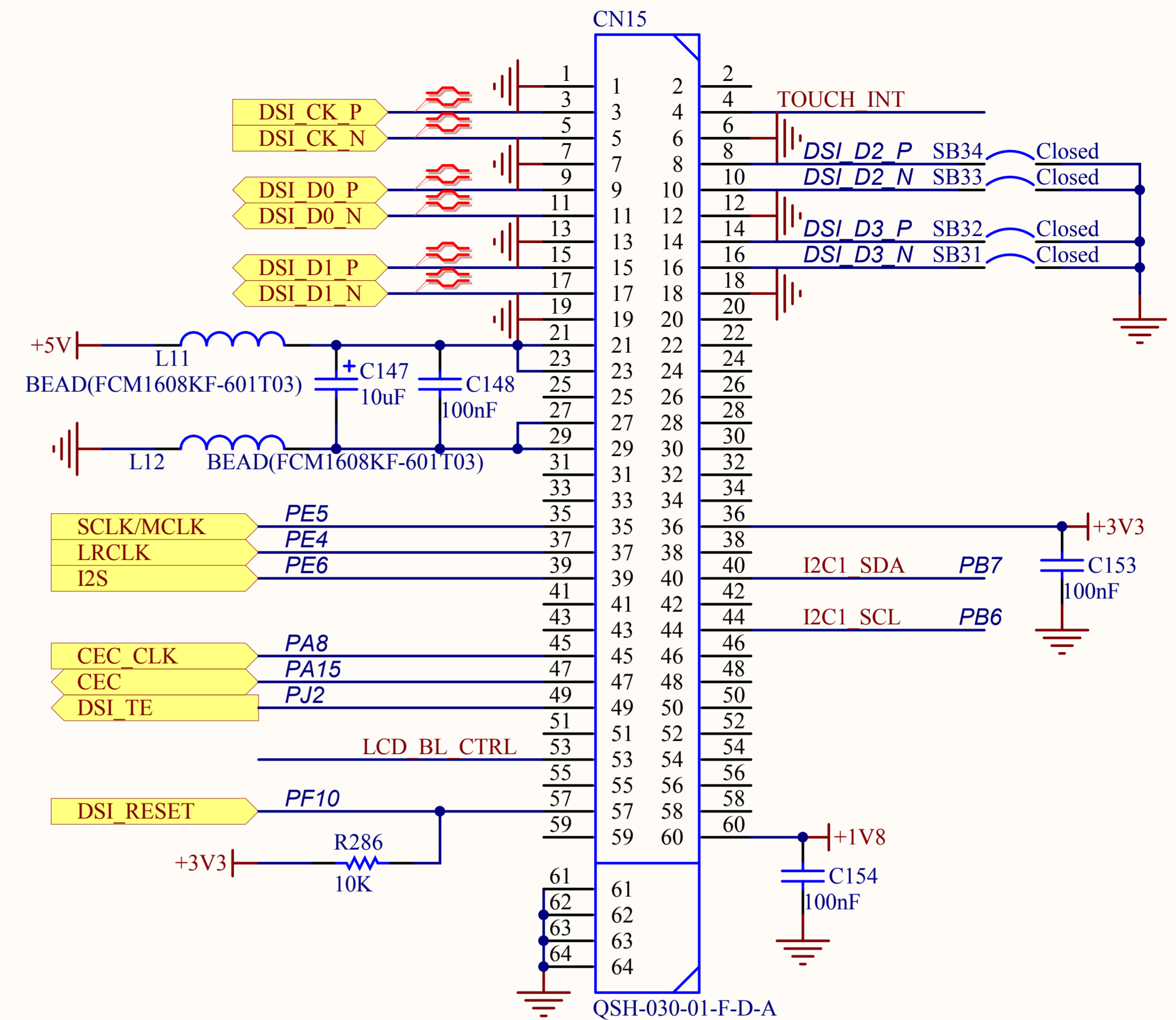




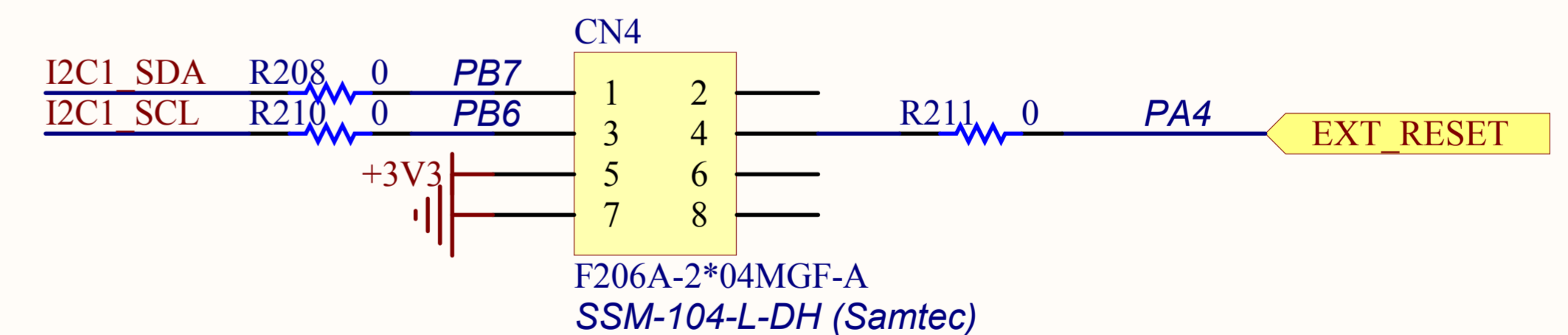
LCD Connector




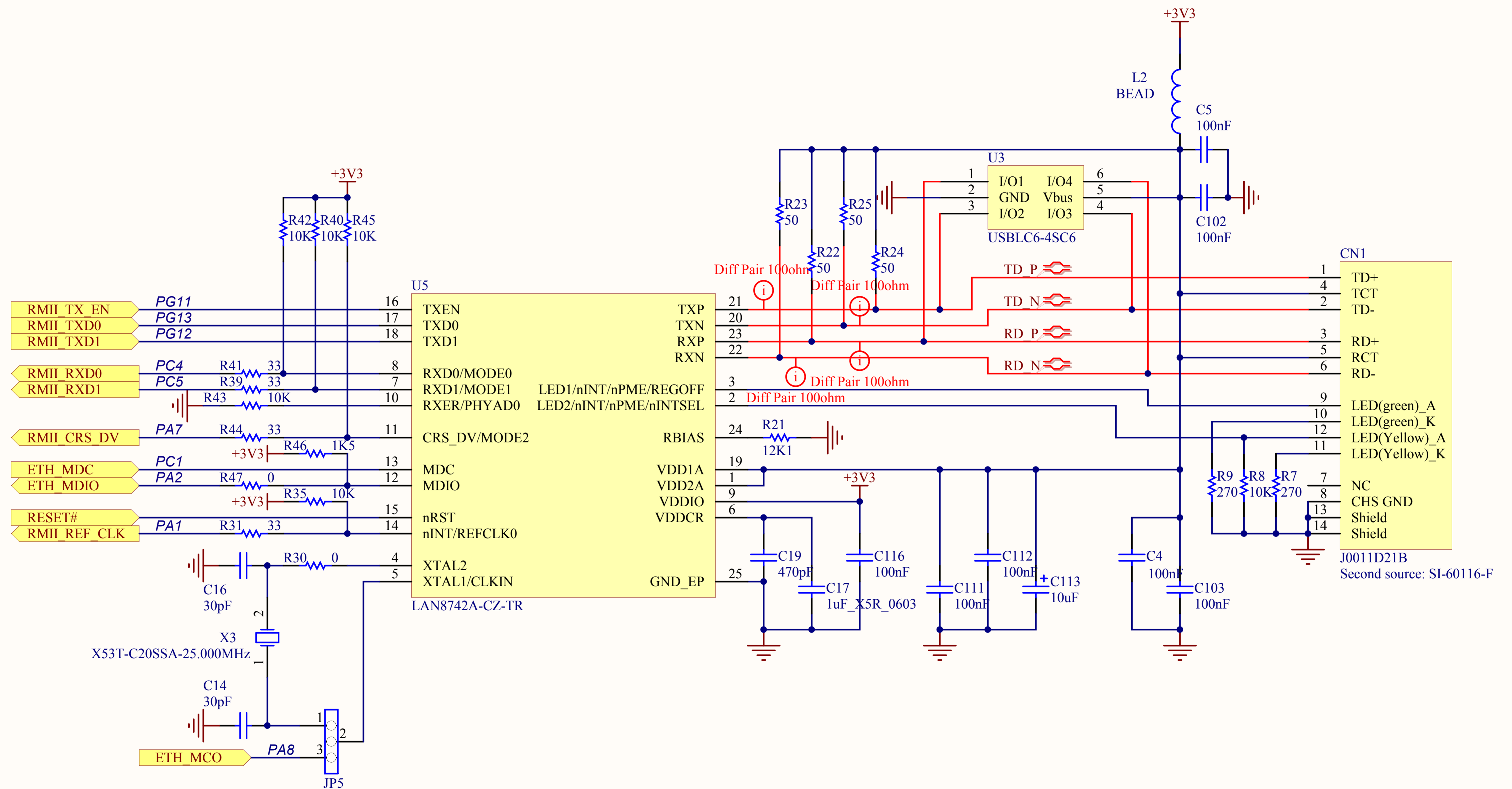
Extension connector (Reserved for other use)

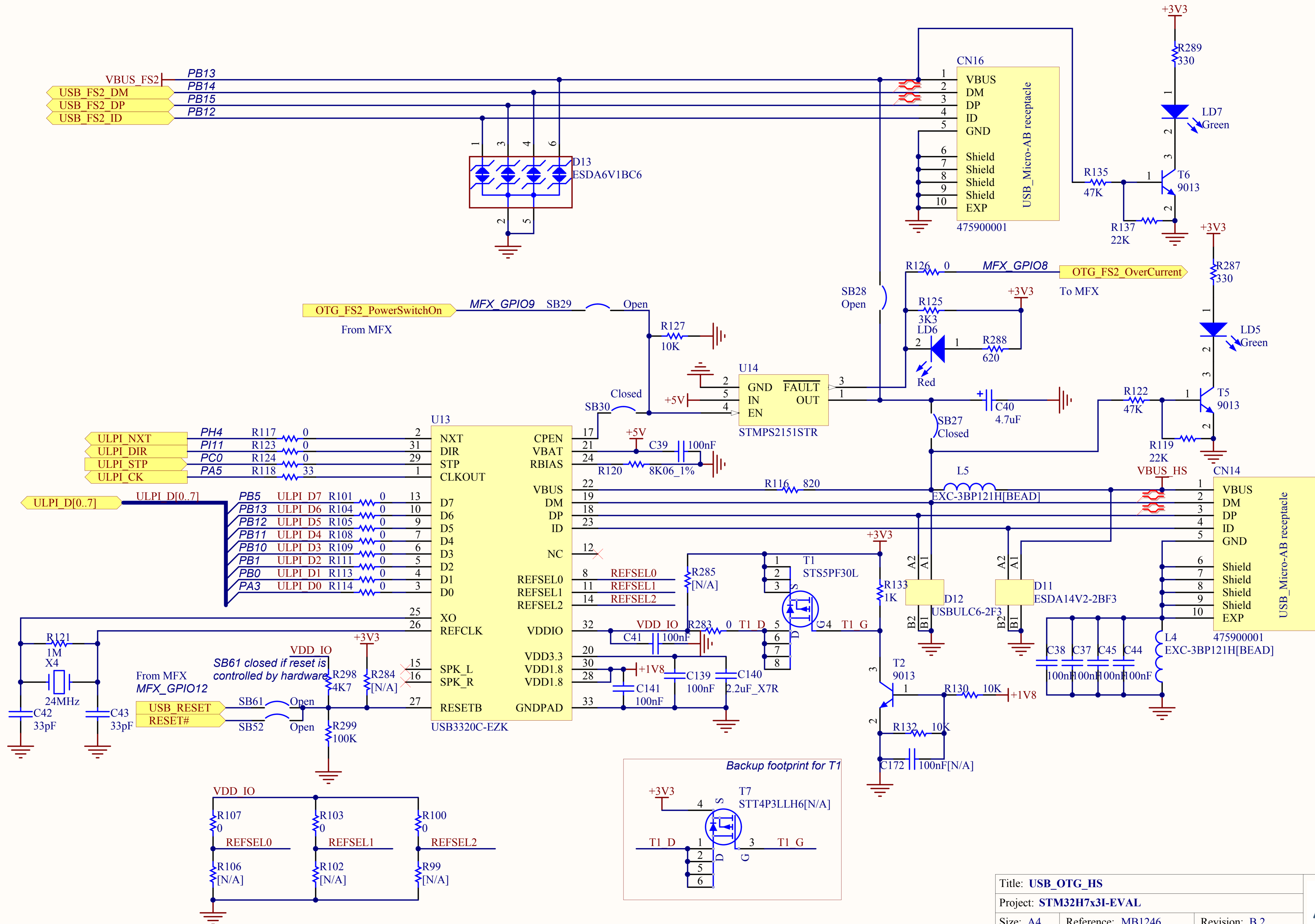


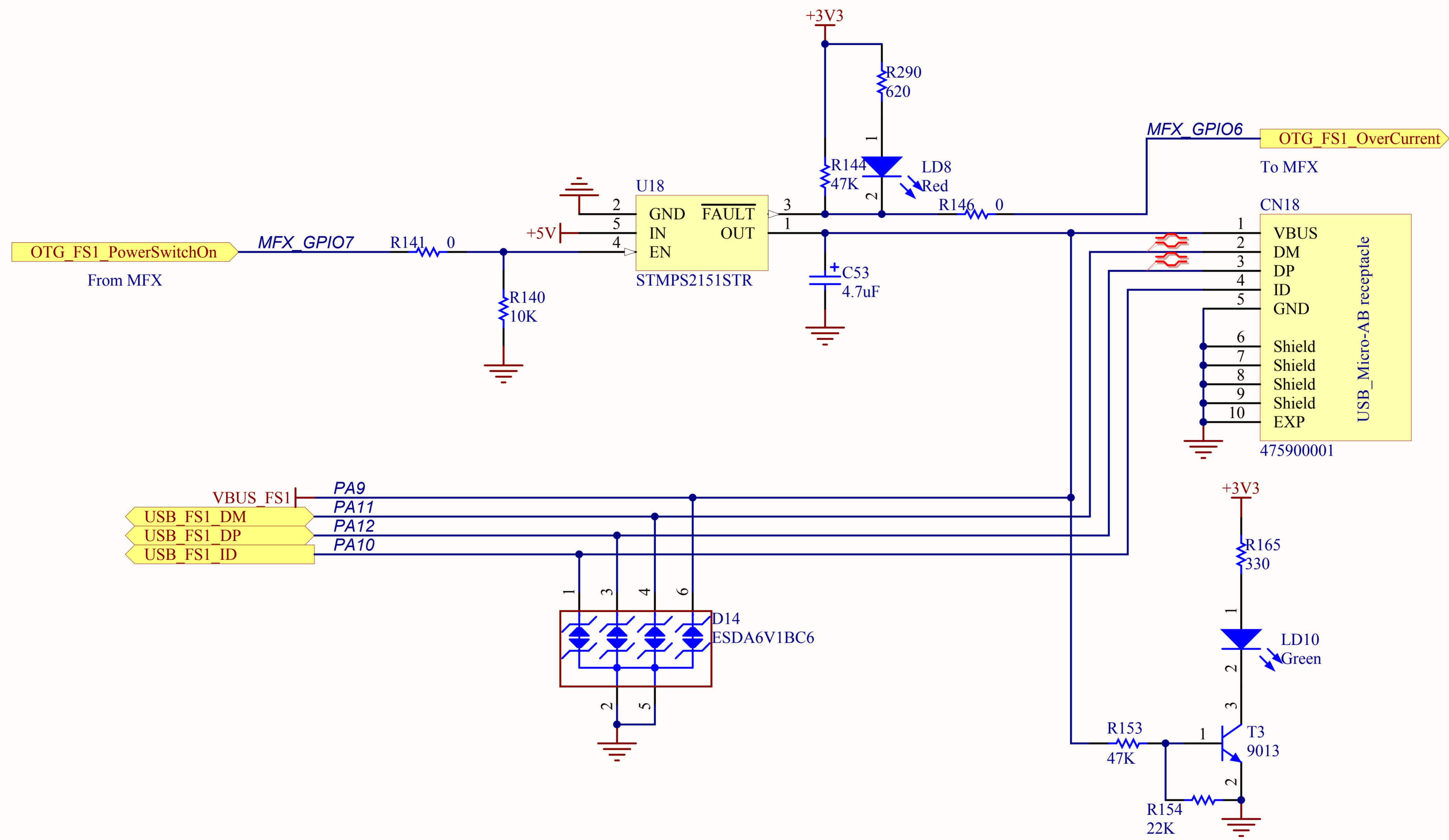
I2C Connector

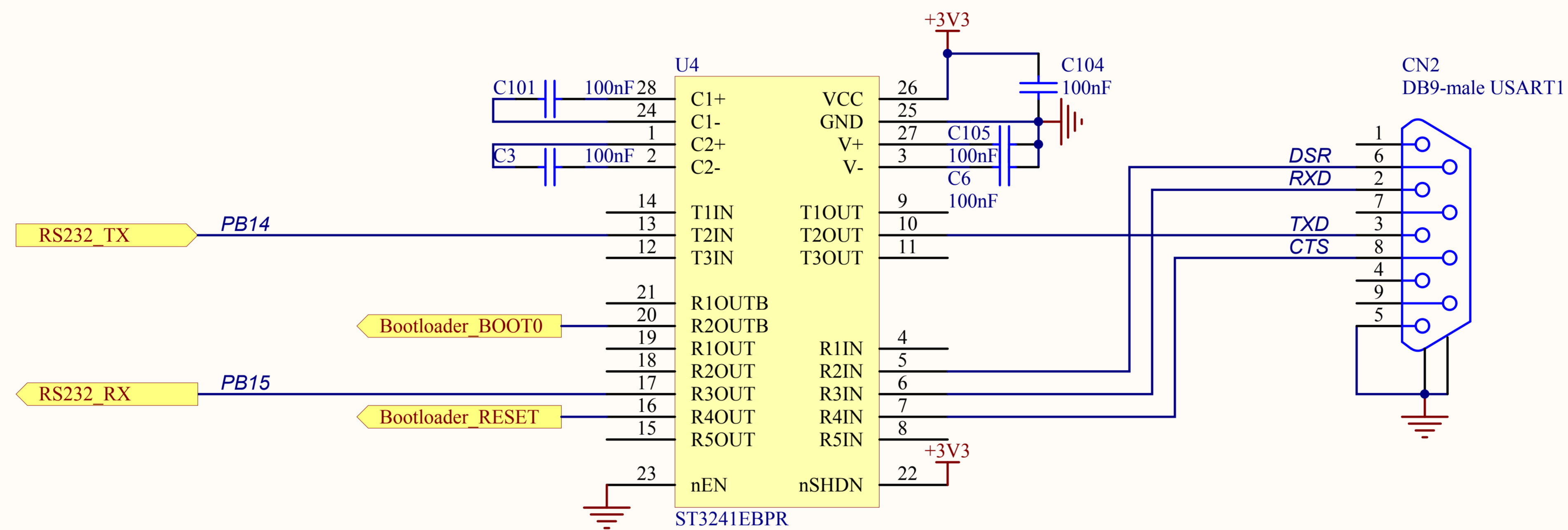


Title: LCD Connectors			 life.augmented
Project: STM32H7x3I-EVAL			
Size: A4	Reference: MB1246	Revision: B.2	
Date: 6/20/2017		Sheet: 6 of 17	



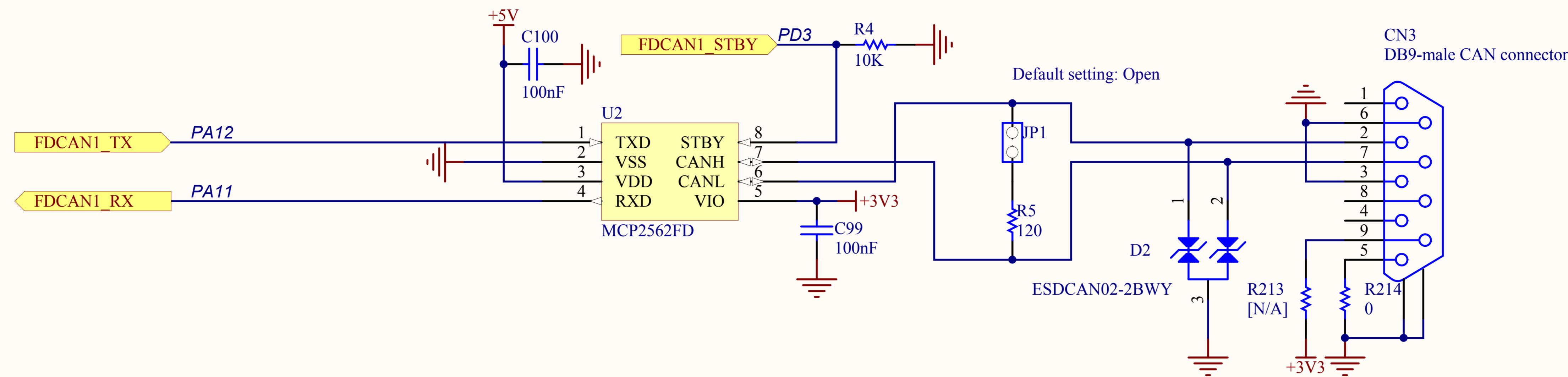




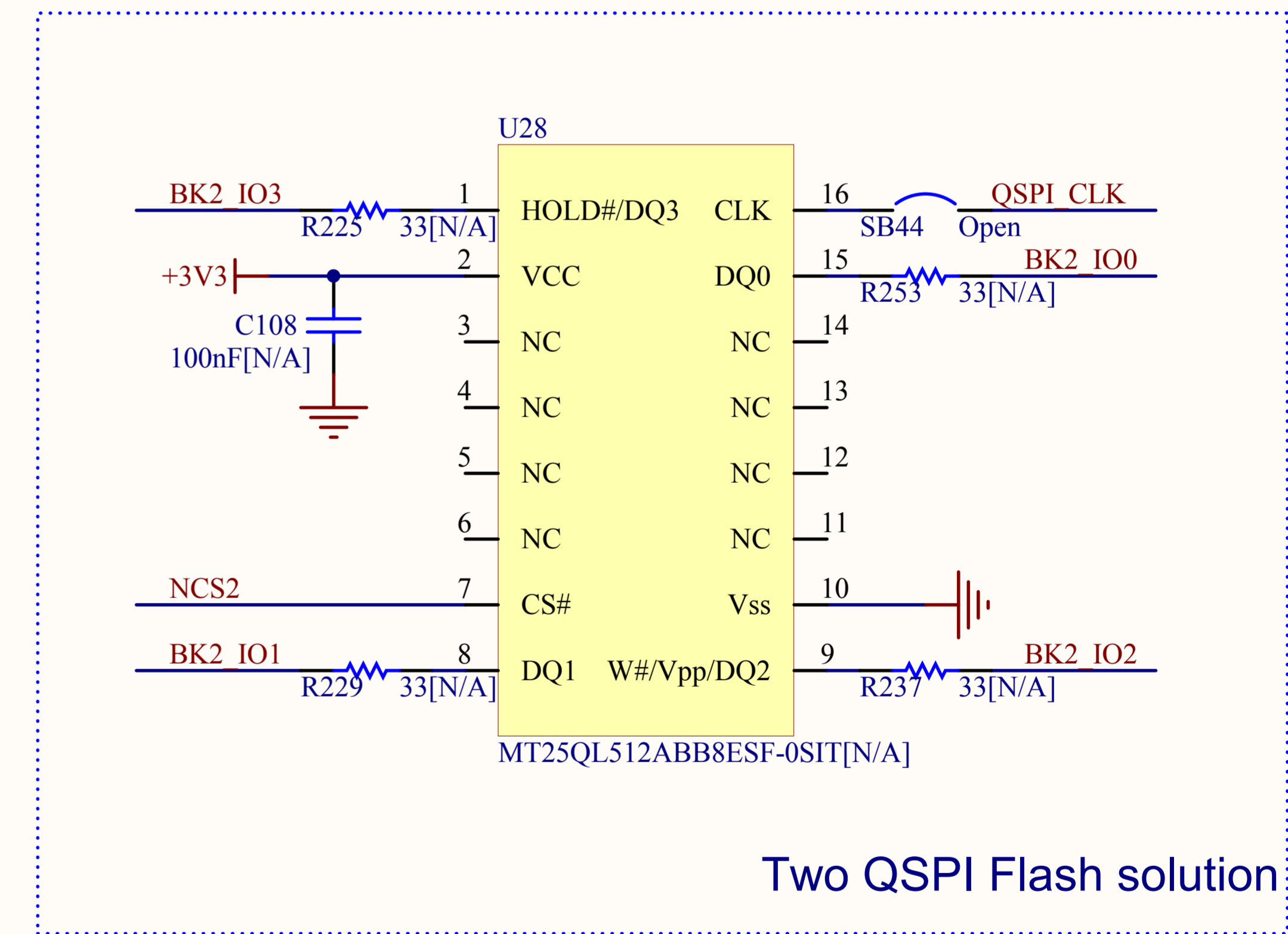
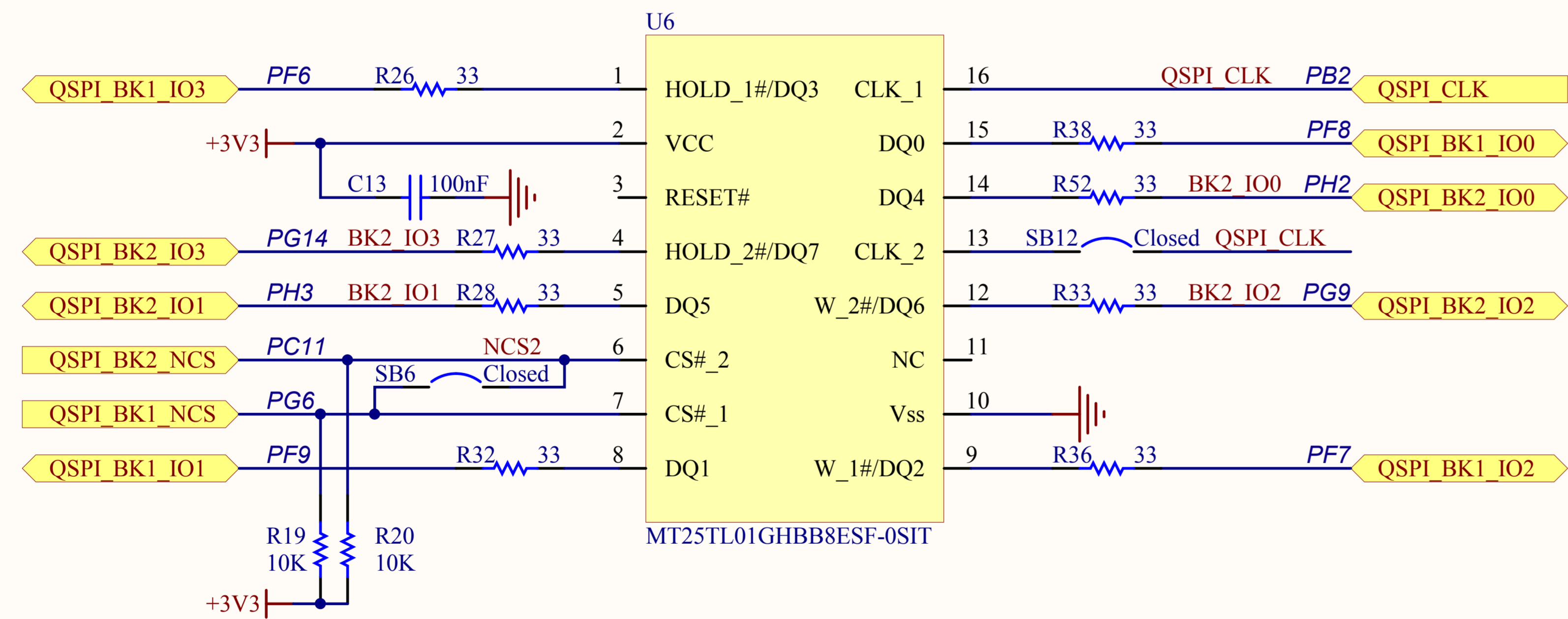


RS232

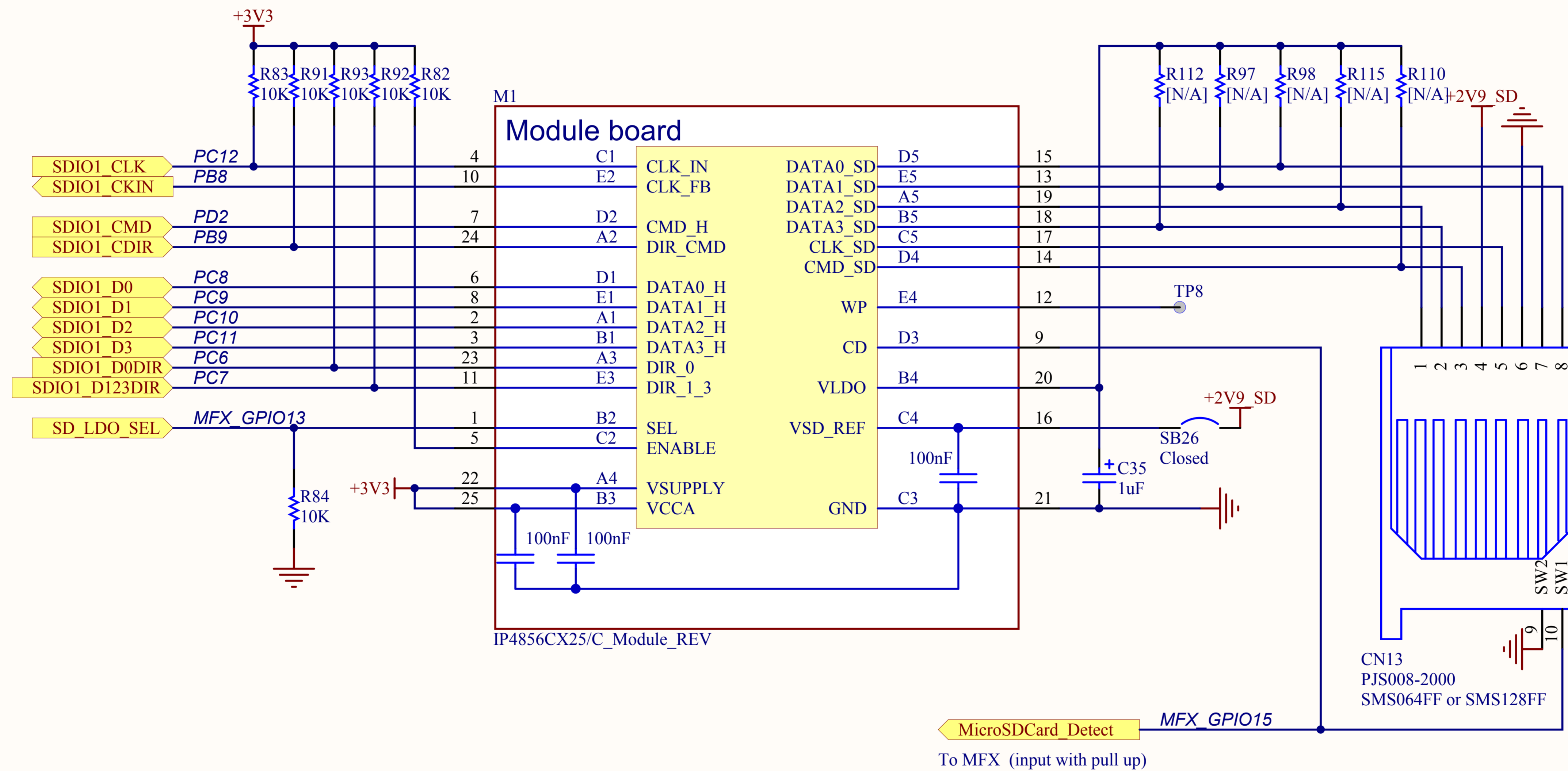
FDCAN





Twin Quad SPI Flash

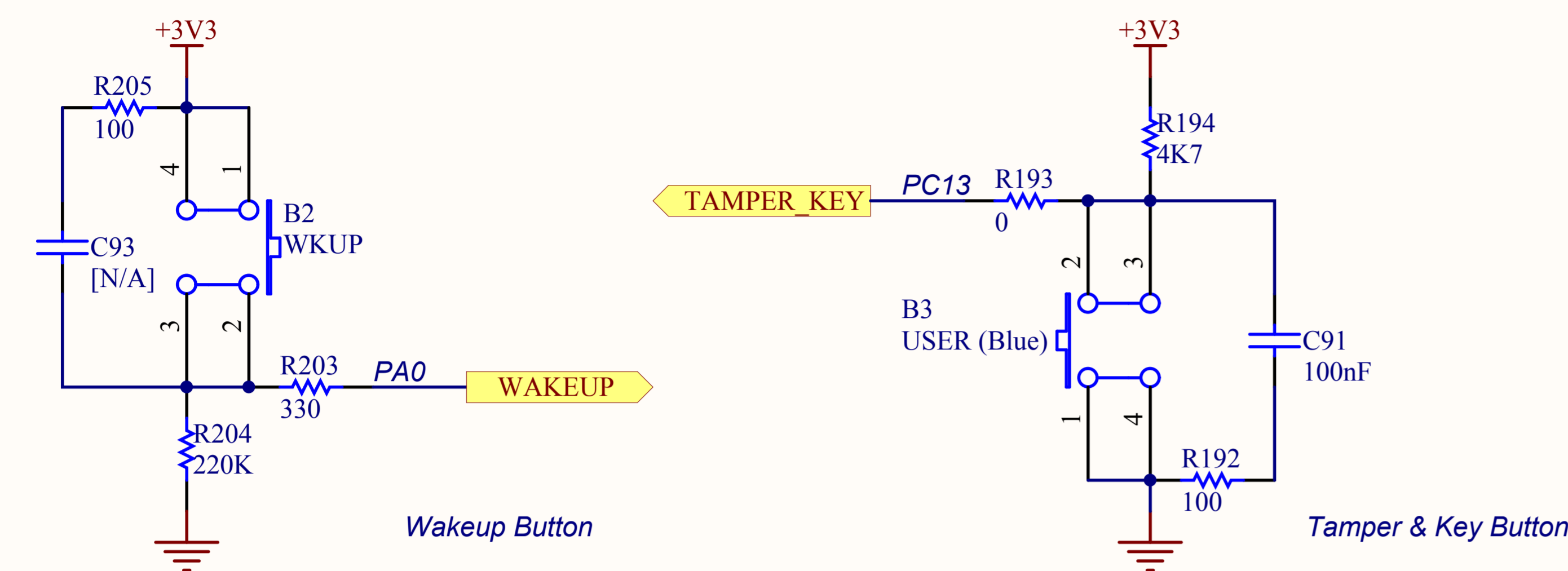


MICRO SD 3.0 Card

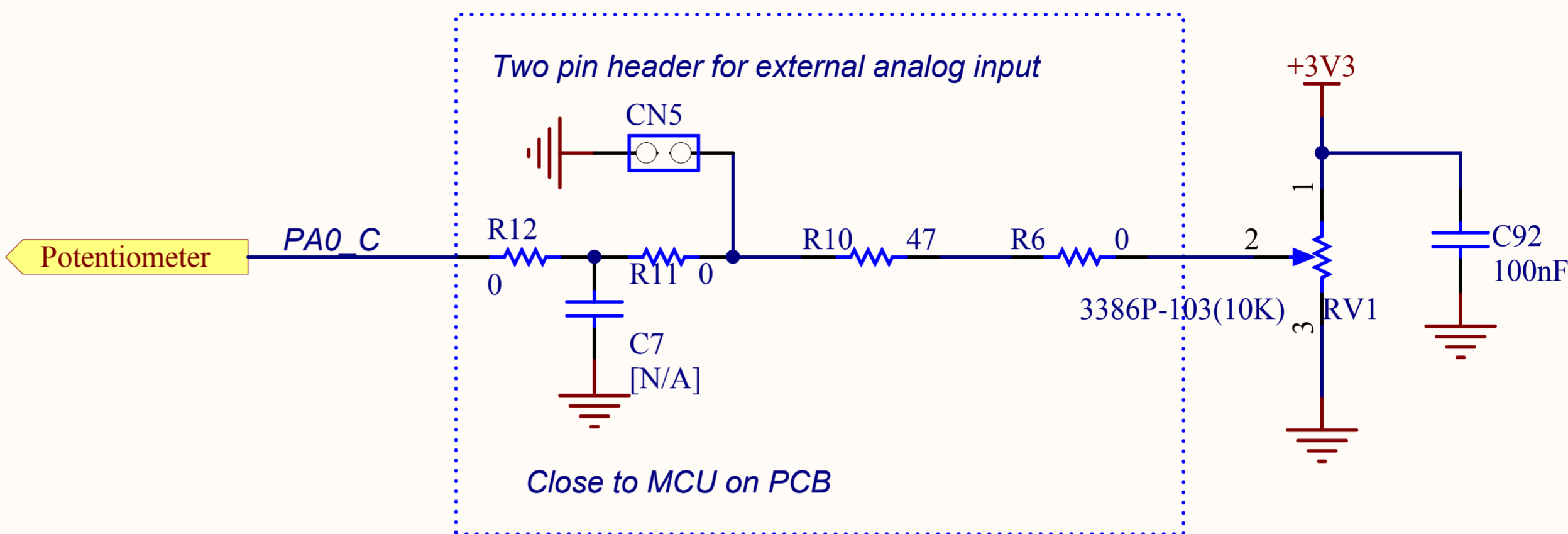


Title: MICRO SD 3.0 Card			 
Project: STM32H7x3I-EVAL			
Size: A4	Reference: MB1246	Revision: B.2	
Date: 6/9/2017		Sheet: 12 of 17	

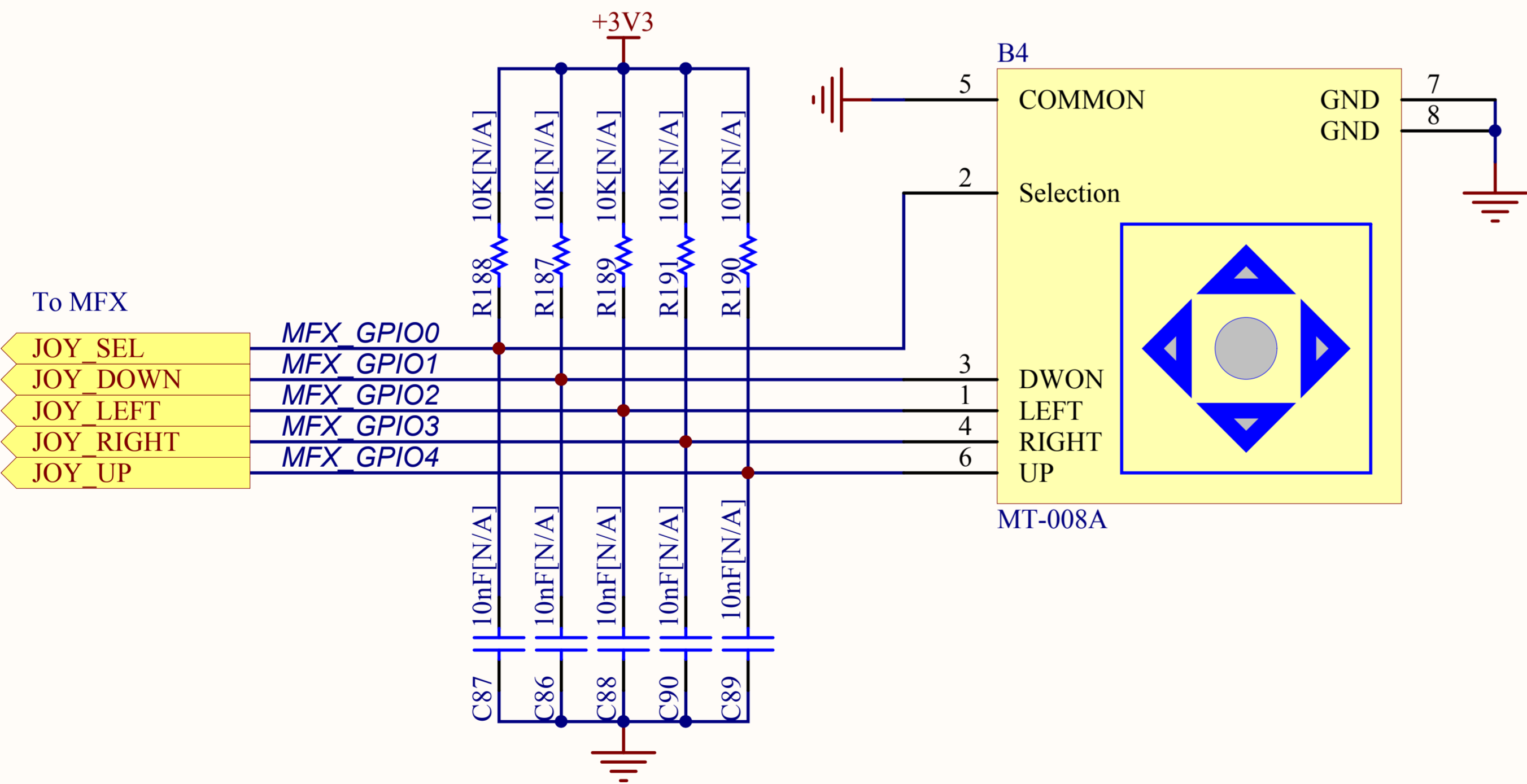
Buttons



Potentiometer



Joystick



LEDs

