

12V SYSTEM ISO-7637-2 SURGE STOPPER

LT4363IDE-

DEMO CIRCUIT 2062A-

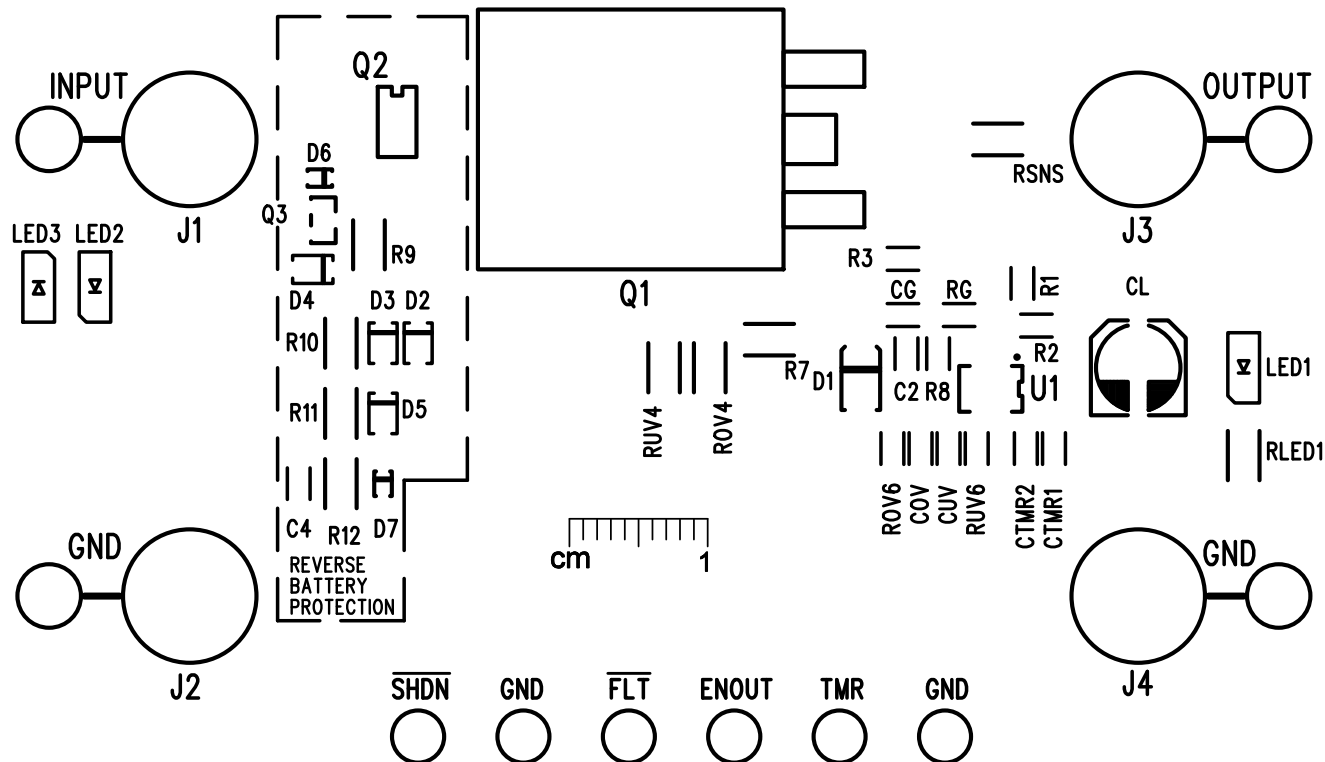
CSNUB RSNUB

— —



(408) 432-1900

www.linear.com



INPUT	
SURGE RIDE-THROUGH	ISO-7637-2 PULSE 5A
DC SURVIVAL	-30V TO +50V
DC OPERATING	5V TO 23.5V
UV	4.2V
OV RETRY INHIBIT	19V

OUTPUT	
OUTPUT REGULATION	24.5V
MAXIMUM LOAD CURRENT	3A
CURRENT LIMIT	3.8A

TOP SILKSCREEN

DATE: 04-11-13

LINEAR TECHNOLOGY

DC2062A-2 LT4363IDE-1/-2

12V SYSTEM ISO-7637-2 SURGE STOPPER