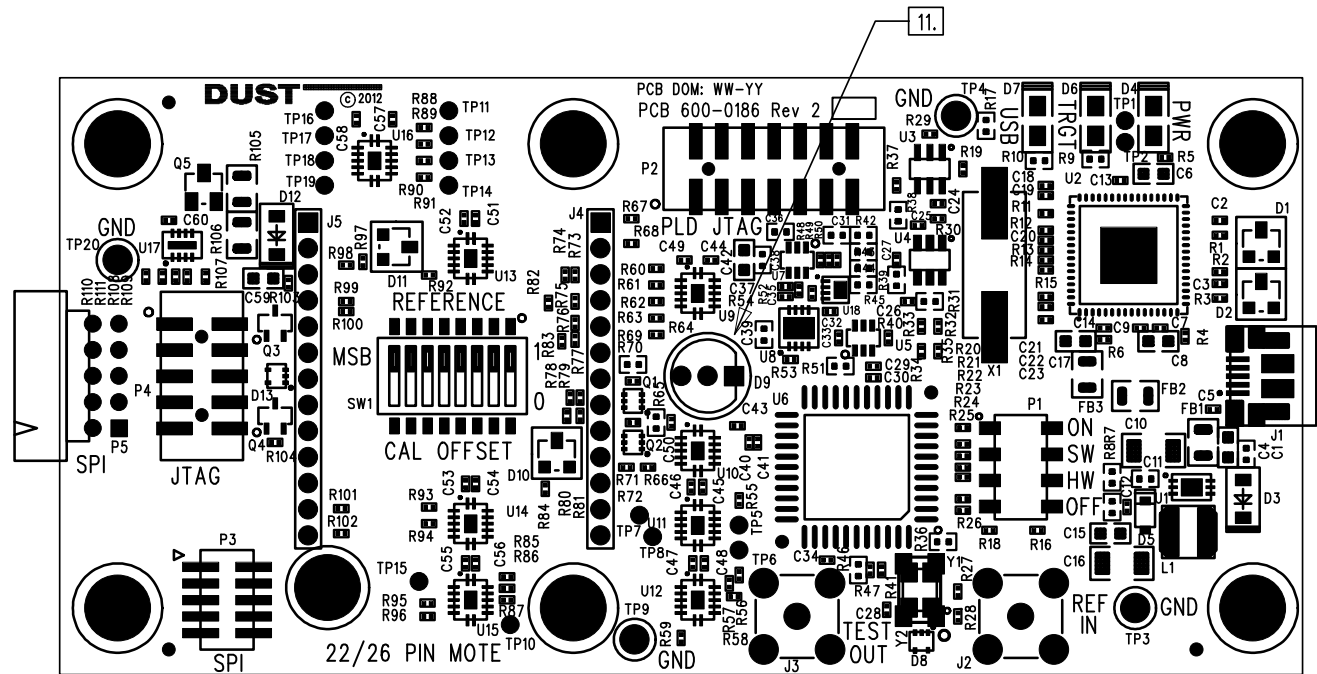


D

C

B

A



REVISIONS

ECO	REV	DESCRIPTION	DATE	APPROVED
1110	1	INITIAL RELEASE	3/5/12	
1139	2	RESPIN, MINOR FIXES	6/13/12	

NOTES, UNLESS SPECIFIED OTHERWISE:

- ASSEMBLY WORKMANSHIP PER CURRENT REVISION OF IPC-A-610 CLASS 2 REQUIREMENTS, UNLESS OTHERWISE INSTRUCTED.
- N.A.
- PLACE THE ASSEMBLY REVISION # IN THE APPROPRIATE AREA.
EX: -01
- SQUARE PADS OF ALL PTH COMPONENTS REPRESENT PIN 1.
- POLARITY OF SMT COMPONENTS ARE INDICATED AS APPROPRIATE.
- N.A.
- VERIFY THAT THE STENCIL REVISION MATCHES THE CURRENT FAB REVISION BEFORE ASSEMBLING.
- ASSEMBLY SHALL BE PACKAGED TO MINIMIZE HANDLING AND ESD DAMAGE DURING STORAGE AND SHIPMENT.
- APPLY QA ACCEPTANCE STAMP AND APPROPRIATE TEST STAMPS WHERE SHOWN: (SOLDER SIDE).
- COMPONENTS NOT LOADED ARE IDENTIFIED IN THE NO-LOAD TABLE.
11. INSTALL 720-0005 (LED 270-0048 INTO SPACER 763-0001) IN LOCATION D9.

D

C

B

A

THIS DOCUMENT CONTAINS INFORMATION
CONSIDERED PROPRIETARY, AND SHALL
NOT BE REPRODUCED WHOLLY OR IN PART,
NOR DISCLOSED TO OTHERS WITHOUT
SPECIFIC PRIOR WRITTEN PERMISSION FROM
DUST NETWORKS.

DUST NETWORKS CONFIDENTIAL

		UNLESS OTHERWISE SPECIFIED, DIMENSIONS ARE IN INCHES: TOLERANCES ARE: FRACTIONS: DECIMALS: .XX \pm .01 ANGLES: 0° 30" .XXX \pm .005	APPROVALS	DATE	DUST NETWORKS			
			DRAWN BY: R.P.D.	2-17 -12	TITLE: ASSEMBLY DRAWING, PROGRAMMER, ETERNA			
			CHECKED					
			ENGRG					
SEE ARENA		MATERIAL – SEE NOTES.	ISSUED		B	FSCM NO.	DWG NO.	REV.
NEXT ASSY	USED ON	FINISH – SEE NOTES.	CONTRACT NO.				705-0186	2
APPLICATION		DO NOT SCALE DRAWING			SCALE: NONE		SHEET 1 OF 1	