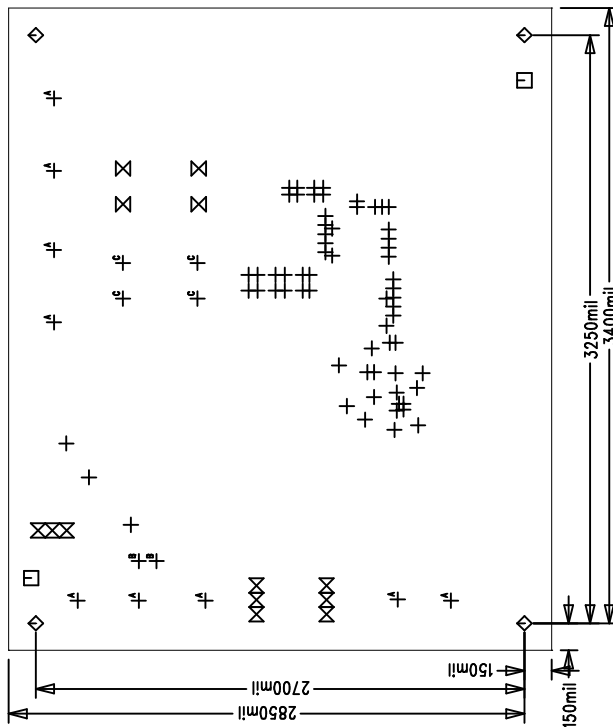


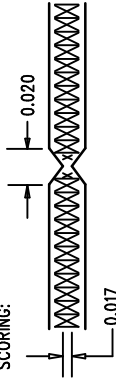
Demo Circuit 501 Rev A
LTC3703EG



REVISIONS			
REV	DESCRIPTION	APPR	DATE


NOTES : Unless Otherwise Specified

1. FAB PER IPC-A-600.
2. MATERIAL: EPOXY FIBERGLASS, NEMA GRADE FR-4. 2 OZ. COPPER THICKNESS .062 +/- .006 TOTAL OF 4 LAYERS. FLAMABILITY RATING: 94 V-0 MINIMUM .
3. DRILLING: DRILL HOLES PER SCHEDULE. PLATE THROUGH HOLES WITH COPPER, .001 INCH THICK MIN. ALL HOLE SIZES ARE SPECIFIED AFTER PLATING. HOLE LOCATION TOLERANCES ARE +/- .003 INCH IN RELATION TO CENTER
4. SOLDER MASK : SMOBC USING LPI BOTH SIDES COLOR GREEN.
5. SILKSCREEN : USING WHITE NON-CONDUCTIVE EPOXY INK.
6. DO NOT ALTER ARTWORK e.g. TO ADD LOGO OR DATE CODE.
7. SCORING:



SIZE	QTY	SYM	PLTD
10	65	+	PLTD
70	2	□	NPLTD
125	4	◇	PLTD
32	4	⊗	PLTD
31	9	⊗	PLTD
94	9	A	PLTD
37	2	B	PLTD
35.43	4	C	PLTD

FAB DRAWING

APPROVALS			 LINEAR TECHNOLOGY		1630 McCarthy Blvd. Milpitas, CA 95035 PH: (408)432-1900	
					TITLE: High Input Voltage Step Down 6A Power Supply	
DRAWN	INIT	DATE				
CHECK						
DESIGN	Rudy B					
ENGR						
			SIZE	A	DEMO	REV. A
					DC501	
					DES-230533	SHT 1 of 1
			SCALE = NONE			