

TPS65581EVM-575 1.5-A, 2.5-A, 1.5-A Triple Synchronous Regulator Evaluation Module

This user's guide contains information for the TPS65581 as well as support documentation for the TPS65581EVM-575 evaluation module. Included are the performance specifications, board layouts, schematic, and the bill of materials of the TPS65581EVM-575.

Contents

1	Introduction	2
2	Performance Specification Summary	2
3	Modifications	3
3.1	Output Voltage Setpoint	3
4	Test Setup and Results	3
4.1	Input/Output Connections	4
4.2	Start-Up Procedure	4
4.3	Efficiency	5
4.4	Load Regulation	8
4.5	Line Regulation	8
4.6	Load Transient Response	9
4.7	Input Voltage Ripple	9
4.8	Start-Up	10
5	Board Layout	11
5.1	Layout	11
6	Schematic, Bill of Materials, and Reference	13
6.1	Schematic	13
6.2	Bill of Materials	14
6.3	Reference	14

List of Figures

1	TPS65581EVM-575 CH1 Efficiency	5
2	TPS65581EVM-575 Light CH1 Load Efficiency	5
3	TPS65581EVM-575 CH2 Efficiency	6
4	TPS65581EVM-575 Light CH2 Load Efficiency	6
5	TPS65581EVM-575 CH3 Efficiency	7
6	TPS65581EVM-575 Light CH3 Load Efficiency	7
7	TPS65581EVM-575 CH1 Load Regulation	8
8	TPS65581EVM-575 Line Regulation	8
9	TPS65581EVM-575 CH1 Load Transient Response, 25% to 75% Load Step	9
10	TPS65581EVM-575 Input Voltage Ripple	9
11	TPS65581EVM-575 CH1 Start-Up Relative to V_{IN}	10
12	TPS65581EVM-575 CH1 Start-Up Relative to EN	10
13	Top Assembly	11
14	Top Layer	11
15	Internal Layer 1	12
16	Internal Layer 2	12

D-CAP2 is a trademark of Texas Instruments.

17	Bottom Layer	13
18	TPS65581EVM-575 Schematic Diagram.....	13

List of Tables

1	Input Voltage and Output Current Summary	2
2	TPS65581EVM-575 Performance Specifications Summary	2
3	Output Voltages	3
4	Connections and Test Points.....	4
5	Bill of Materials.....	14

1 Introduction

The TPS65581 is a triple output, advanced D-CAP2™-mode, synchronous buck converter requiring a very low external component count. The advanced D-CAP2 control circuit is optimized for low-ESR output capacitors such as POSCAP, SP-CAP, or ceramic types and features fast transient response with no external compensation. The switching frequency is internally set at a nominal 700 kHz. The high-side and low-side switching MOSFETs are incorporated inside the TPS65580 package along with the gate-drive circuitry. The low drain-to-source on resistance of the MOSFETs allows the TPS65580 to achieve high efficiencies and helps keep the junction temperature low at high output currents. The TPS65580 dc/dc synchronous converter is designed to provide up to 1.5-A, 2.5-A and 1.5-A output for each of 3 channels from an input voltage source of 4.5 V to 18 V. The output voltage range is from 0.76 V to 6.5 V. Rated input voltage, output voltage and output current ranges for the evaluation module are given in [Table 1](#). This user's guide describes the TPS65581EVM-575 performance.

Table 1. Input Voltage and Output Current Summary

EVM	Input Voltage Range	Channel	Output Voltage	Output Current Range
TPS65581EVM-575	$V_{IN} = 4.5 \text{ V to } 18 \text{ V}$	CH1	3.3 V	0-A to 1.5-A
		CH2	1.2 V	0-A to 2.5-A
		CH3	1.5 V	0-A to 1.5-A

2 Performance Specification Summary

A summary of the TPS65581EVM-575 performance specifications is provided in [Table 2](#). Specifications are given for an input voltage of $V_{IN} = 12 \text{ V}$ and $T_a = 25^\circ\text{C}$ unless otherwise noted.

Table 2. TPS65581EVM-575 Performance Specifications Summary

Specifications		Test Conditions	Min	Typ	Max	Unit
Input voltage range (V_{IN})			4.5	12	18	V
Operating frequency				700		kHz
CH1	Output voltage			3.3		V
	Output current range		0		1.5	A
	Over current limit	$V_{IN} = 12 \text{ V}, L_O = 3.3 \mu\text{H}$		2.0		A
	Output ripple voltage	$V_{IN} = 12 \text{ V}, I_O = 1.5 \text{ A}$		10		mV _{PP}
CH1	Output voltage			1.2		V
	Output current range		0		2.5	A
	Over current limit	$V_{IN} = 12 \text{ V}, L_O = 2.2 \mu\text{H}$		3.5		A
	Output ripple voltage	$V_{IN} = 12 \text{ V}, I_O = 2.5 \text{ A}$		10		mV _{PP}
CH1	Output voltage			1.5		V
	Output current range		0		1.5	A
	Over current limit	$V_{IN} = 12 \text{ V}, L_O = 2.2 \mu\text{H}$		2.0		A
	Output ripple voltage	$V_{IN} = 12 \text{ V}, I_O = 1.5 \text{ A}$		10		mV _{PP}

3 Modifications

These evaluation modules are designed to provide access to the features of the TPS65581. Some modifications can be made to this module.

3.1 Output Voltage Setpoint

To change the output voltage of the EVMs, it is necessary to change the value of the top resistor in the voltage set point divider network (R9, R13, and R17). Changing the value of R_{TOP} can change the output voltage above 0.765 V. The value of R_{TOP} for a specific output voltage can be calculated using [Equation 1](#).

$$R_{TOP} = R_{BOT} \times \left(\frac{V_{OUT}}{0.764V} - 1 \right) \quad (1)$$

[Table 3](#) lists the R_{TOP} values for some common output voltages. For higher output voltages of 1.8 V or above, a feed-forward capacitor (C_{FF}) may be required to improve phase margin. Pads for this component (C12, C18, and C24) are provided on the printed-circuit board. Note that the values given in [Table 3](#) are standard values and not the exact value calculated using [Equation 1](#).

Table 3. Output Voltages

Output Voltage (V)	R _{TOP} (kΩ)	R _{BOT} (kΩ)	C _{FF} (pF)	L _{OUT} (μH)			C _{OUT} (μF)
				Min	Typ	Max	
1.0	.681	2.21	220 - 680	1.5	2.2	3.3	22 - 68
1.05	.825	2.21	100 - 680	1.5	2.2	3.3	22 - 68
1.2	1.27	2.21	68 - 680	1.5	2.2	3.3	22 - 68
1.5	2.10	2.21	68 - 330	1.5	2.2	3.3	22 - 68
1.8	3.01	2.21	5 - 68	1.5	2.2	3.3	22 - 68
2.5	4.99	2.21	5 - 22	2.2	3.3	4.7	22 - 68
3.3	7.32	2.21	5 - 22	2.2	3.3	4.7	22 - 68
5.0	12.4	2.21	5 - 22	2.2	3.3	4.7	22 - 68
6.5	16.5	2.21	5 - 22	2.2	3.3	4.7	22 - 68

4 Test Setup and Results

This section describes how to properly connect, set up, and use the TPS65581EVM-575. The section also includes test results typical for the evaluation modules and efficiency, output load regulation, output line regulation, load transient response, output voltage ripple, input voltage ripple, start-up, and switching frequency.

4.1 Input/Output Connections

The TPS65581EVM-575 is provided with input/output connectors and test points as shown in Table 4. A power supply capable of supplying 5 A must be connected to J1 through a pair of 20-AWG wires. The loads must be connected to J2, J3 and J4 through pairs of 20-AWG wires. The maximum load current capability is for each channel is shown in Table 1. Wire lengths must be minimized to reduce losses in the wires. Test point TP1 provides a place to monitor the V_{IN} input voltages with TP2 providing a convenient ground reference. Test points TP11, TP15 and TP19 are used to monitor the output voltage for each of the three channels. Test points TP12, TP18 and TP20 are used as the ground reference for each of the three channels.

Table 4. Connections and Test Points

Reference Designator	Function
J1	V_{IN} (see Table 1 for V_{IN} range)
J2	CH1 V_{OUT} , 3.3 V at 1.5-A maximum
J3	CH2 V_{OUT} , 1.2 V at 2.5-A maximum
J4	CH3 V_{OUT} , 1.5 V at 1.5-A maximum
JP1	CH1 EN control. Jumper JP1-2 to JP1-3 to disable, jumper JP1-2 to JP1-1 to enable.
JP2	CH2 EN control. Jumper JP2-2 to JP2-3 to disable, jumper JP2-2 to JP2-1 to enable.
JP3	CH3 EN control. Jumper JP3-2 to JP3-3 to disable, jumper JP3-2 to JP3-1 to enable.
TP1	V_{IN} test point at V_{IN} connector
TP2	GND test point at V_{IN}
TP3	CH1 EN test point
TP4	CH2 EN test point
TP5	CH3 EN test point
TP6	Power good test point
TP7	Power ground test point
TP8	Analog ground test point
TP9	CH1 switch node test point
TP10	CH1 loop response test point
TP11	CH1 output voltage test point
TP12	CH1 ground test point at output connector
TP13	CH2 switch node test point
TP14	CH2 loop response test point
TP15	CH2 output voltage test point
TP16	CH2 ground test point at output connector
TP17	CH3 switch node test point
TP18	CH3 loop response test point
TP19	CH3 output voltage test point
TP20	CH3 ground test point at output connector

4.2 Start-Up Procedure

1. Ensure that the jumpers at JP1 (CH1 Enable control), JP2 (CH2 Enable control) and JP3 (CH3 Enable control) is set from ON to OFF
2. Apply appropriate V_{IN} voltage to VIN and GND terminals at J1
3. Set the jumpers at JP1 (CH1 Enable control), JP2 (CH2 Enable control) and JP3 (CH3 Enable control) to ON. The EVM enables the output voltages for each of the three channels.

4.3 Efficiency

Figure 1 shows the efficiency for the TPS65581EVM-575 CH1.

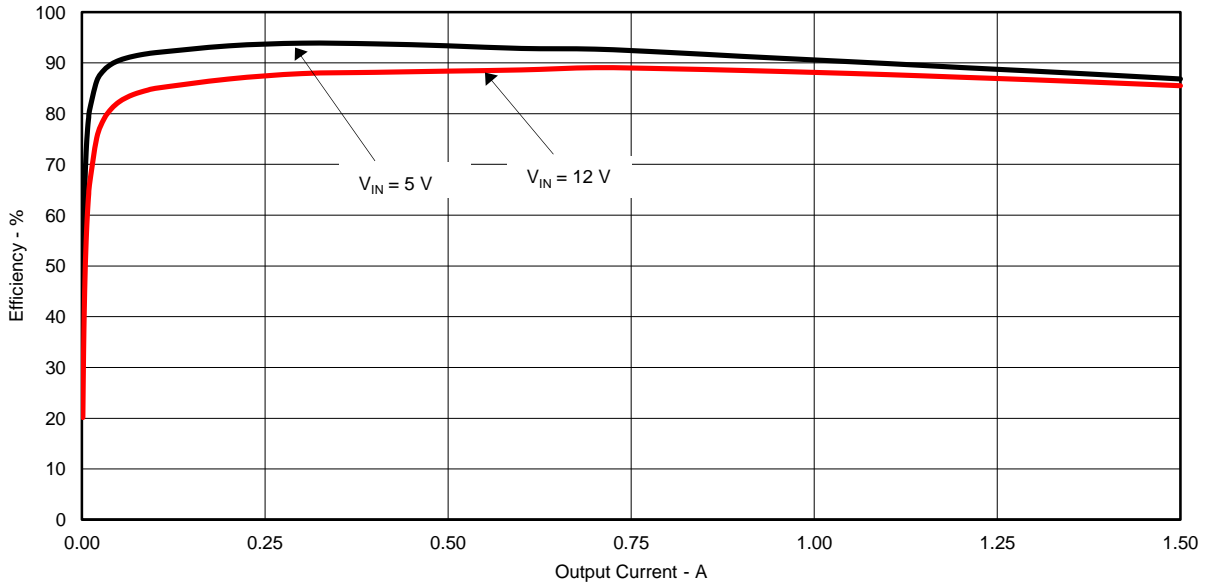


Figure 1. TPS65581EVM-575 CH1 Efficiency

Figure 2 shows the efficiency at light loads for the TPS65581EVM-575 CH1.

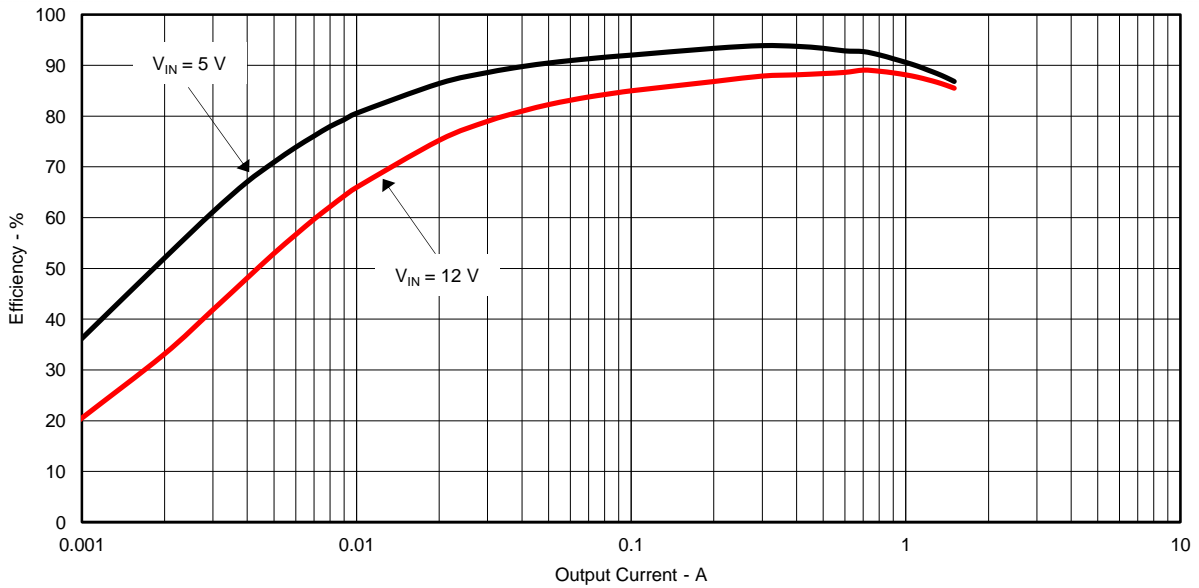


Figure 2. TPS65581EVM-575 Light CH1 Load Efficiency

Figure 3 shows the efficiency for the TPS65581EVM-575 CH2.

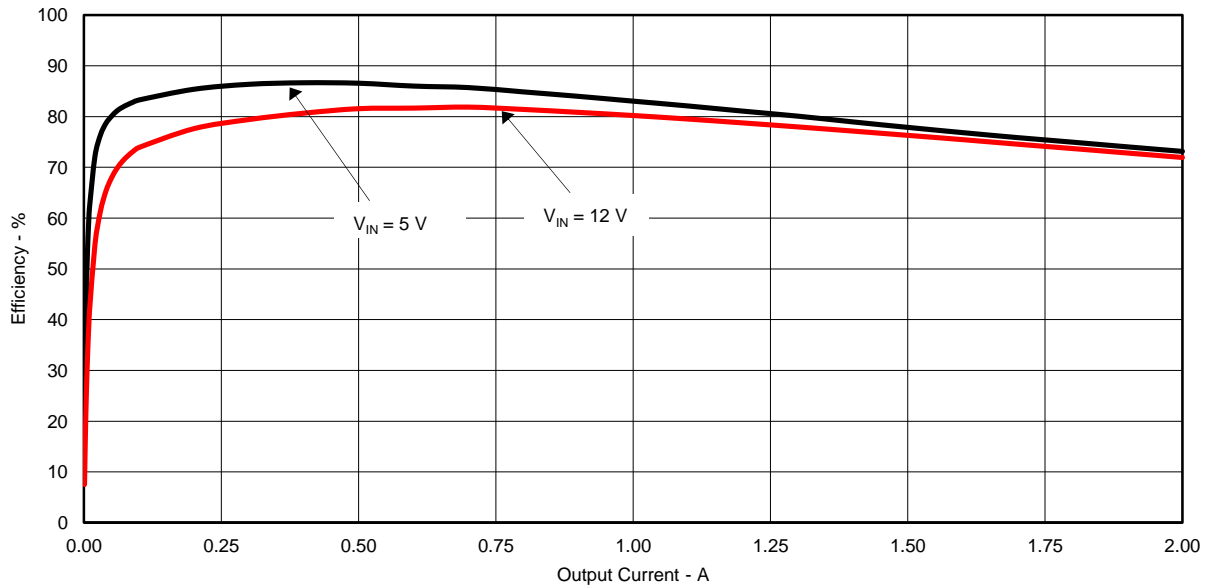


Figure 3. TPS65581EVM-575 CH2 Efficiency

Figure 4 shows the efficiency at light loads for the TPS65581EVM-575 CH2.

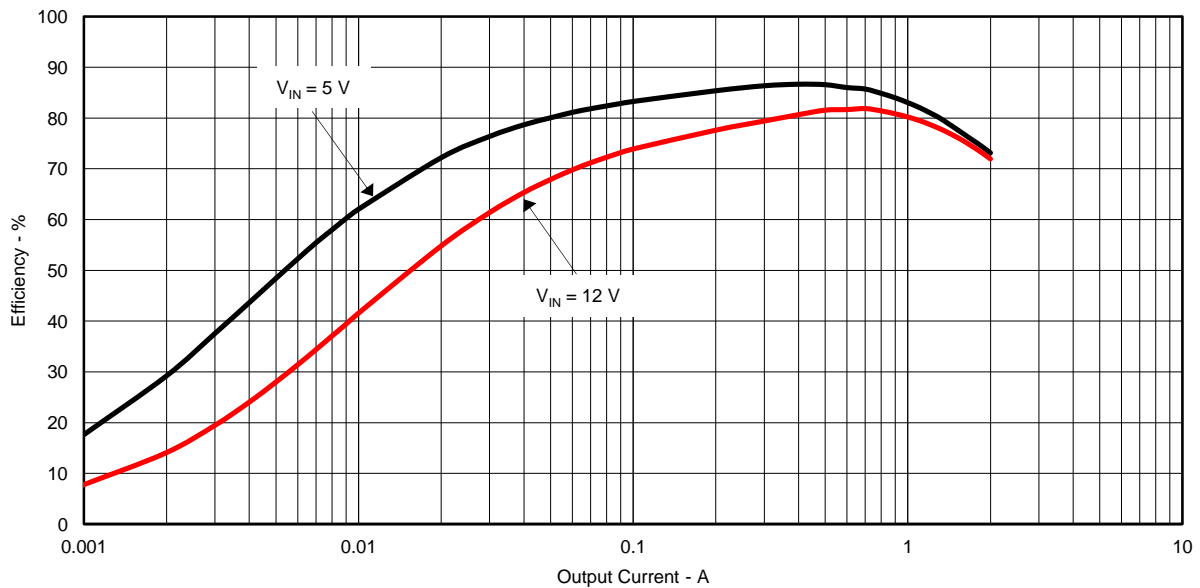


Figure 4. TPS65581EVM-575 Light CH2 Load Efficiency

Figure 5 shows the efficiency for the TPS65581EVM-575 CH3.

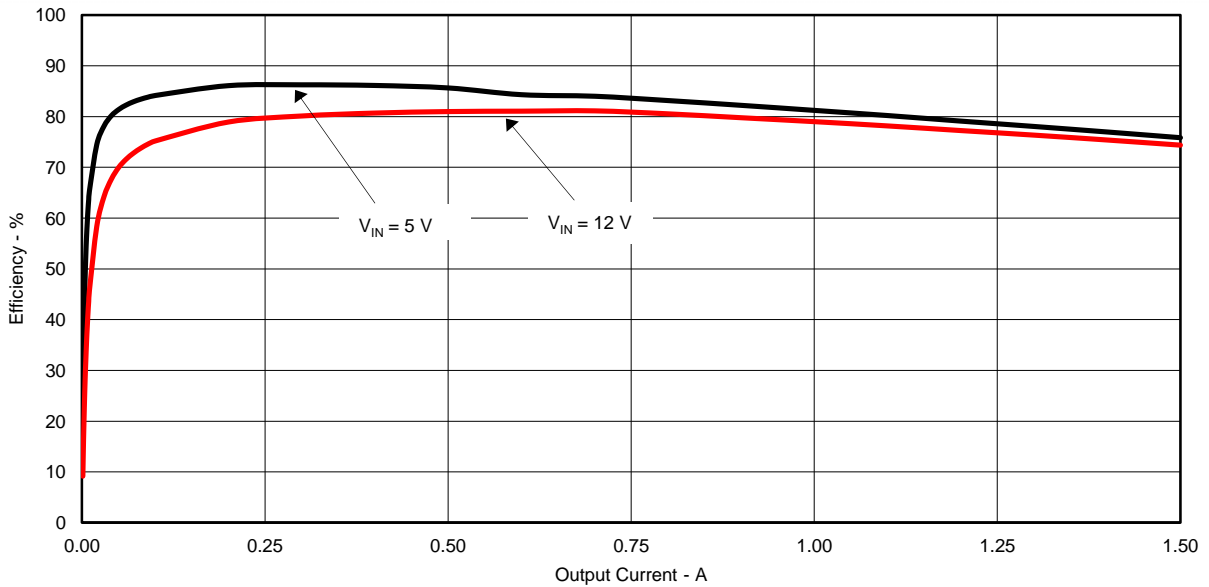


Figure 5. TPS65581EVM-575 CH3 Efficiency

Figure 6 shows the efficiency at light loads for the TPS65581EVM-575 CH3.

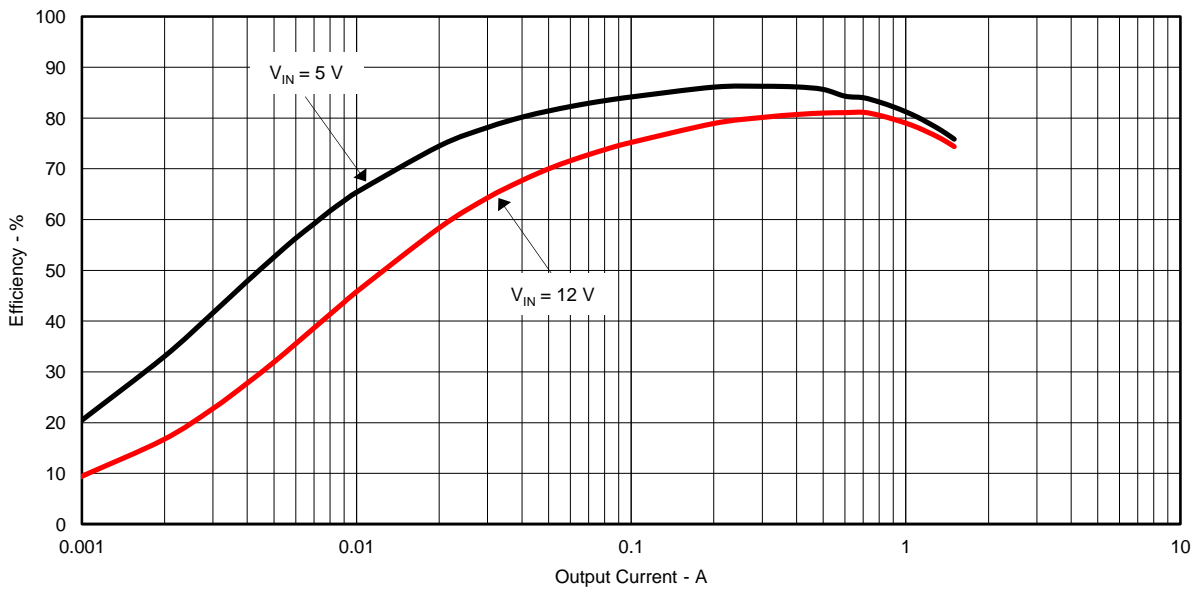


Figure 6. TPS65581EVM-575 Light CH3 Load Efficiency

4.4 Load Regulation

The load regulation for the TPS65581EVM-575 CH1 is shown in Figure 7. The load regulation for CH2 and CH3 is similar and is not shown.

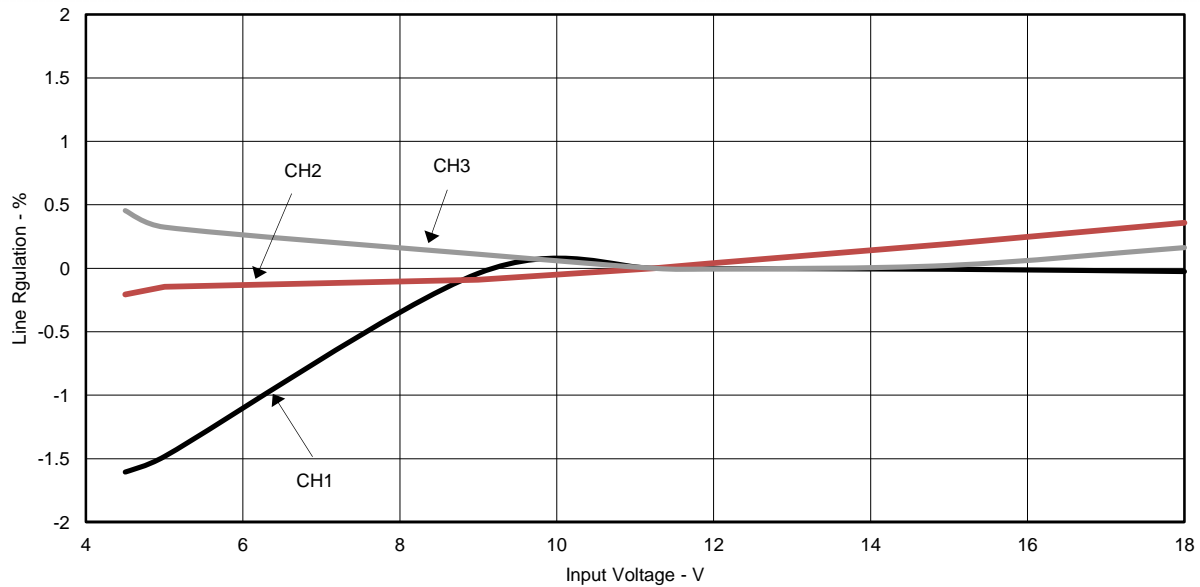


Figure 7. TPS65581EVM-575 CH1 Load Regulation

4.5 Line Regulation

The line regulation for the TPS65581EVM-575 CH1, CH2, and CH3 is shown in Figure 8. Note that the CH1 output voltage is 3.3 V and the line regulation is lessened as V_{IN} approaches V_{OUT} .

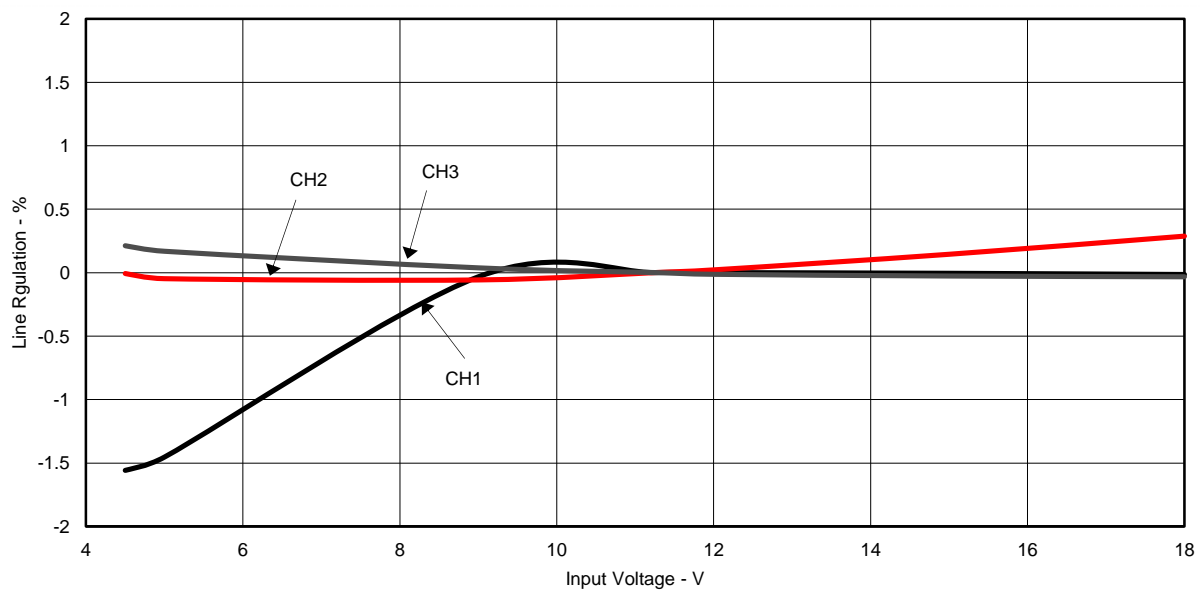


Figure 8. TPS65581EVM-575 Line Regulation

4.6 Load Transient Response

The TPS65581EVM-575 CH1 response to load transients is shown in Figure 9. The current steps and slew rates are indicated in the figures. Total peak-to-peak voltage variation is as shown. The transient response for CH2 and CH3 is similar and is not shown.

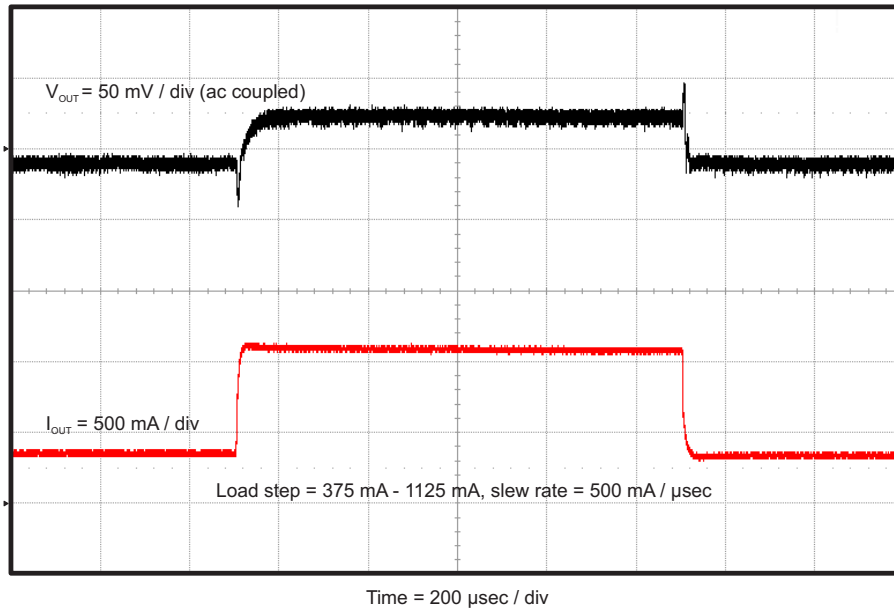


Figure 9. TPS65581EVM-575 CH1 Load Transient Response, 25% to 75% Load Step

4.7 Input Voltage Ripple

The TPS65581EVM-575 input voltage ripple is shown in Figure 10. The output current for each channel is the full rated load of 1.5-A, 2.5-A and 1.5-A. Note that the switching waveforms for each channel are out of phase to reduce input ripple.

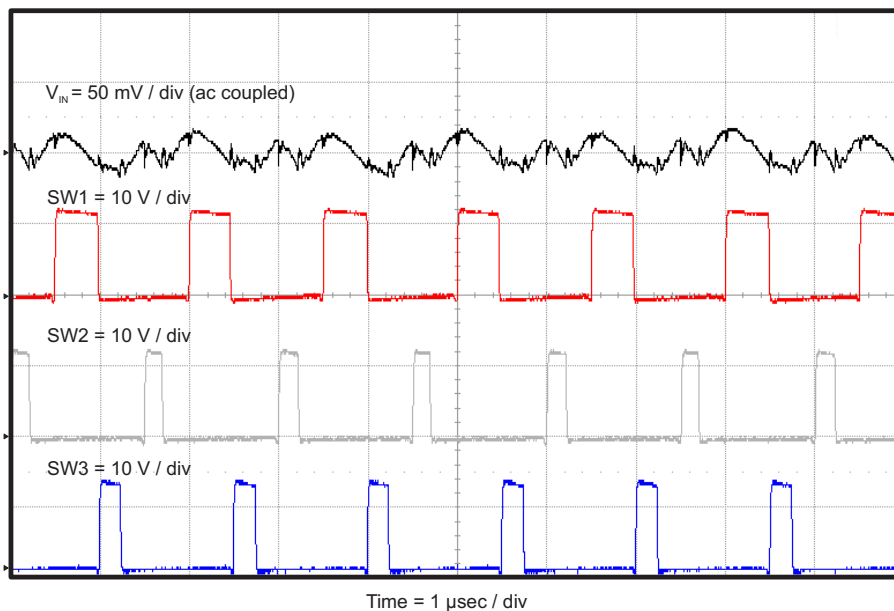


Figure 10. TPS65581EVM-575 Input Voltage Ripple

4.8 Start-Up

The TPS65581EVM-575 start-up waveform for CH1 relative to V_{IN} is shown in Figure 11. Load = 4 Ω resistive. The start up waveforms for CH2 and CH3 are similar and not shown.

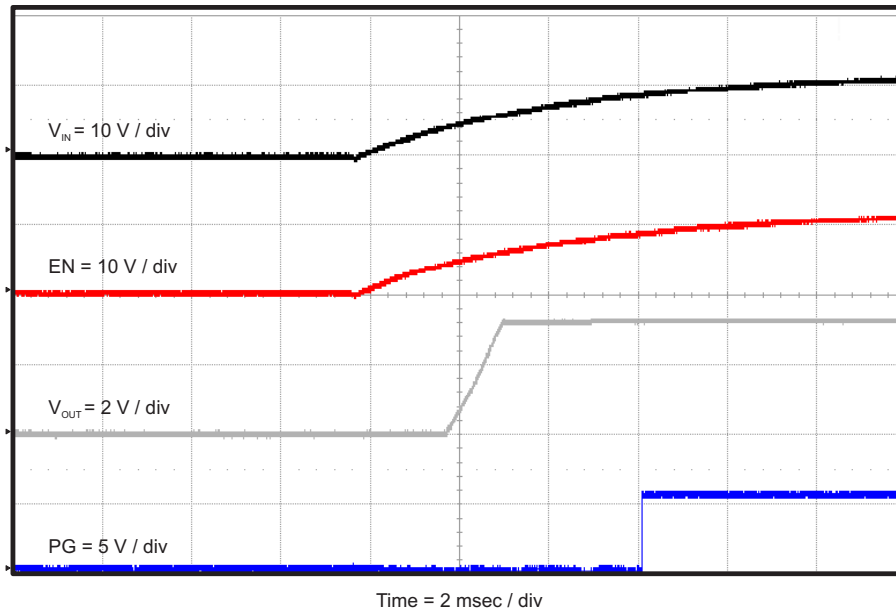


Figure 11. TPS65581EVM-575 CH1 Start-Up Relative to V_{IN}

The TPS65581EVM-575 start-up waveform for CH1 relative to enable (EN) is shown in Figure 12. Load = 4 Ω resistive. The start up waveforms for CH2 and CH3 are similar and not shown.

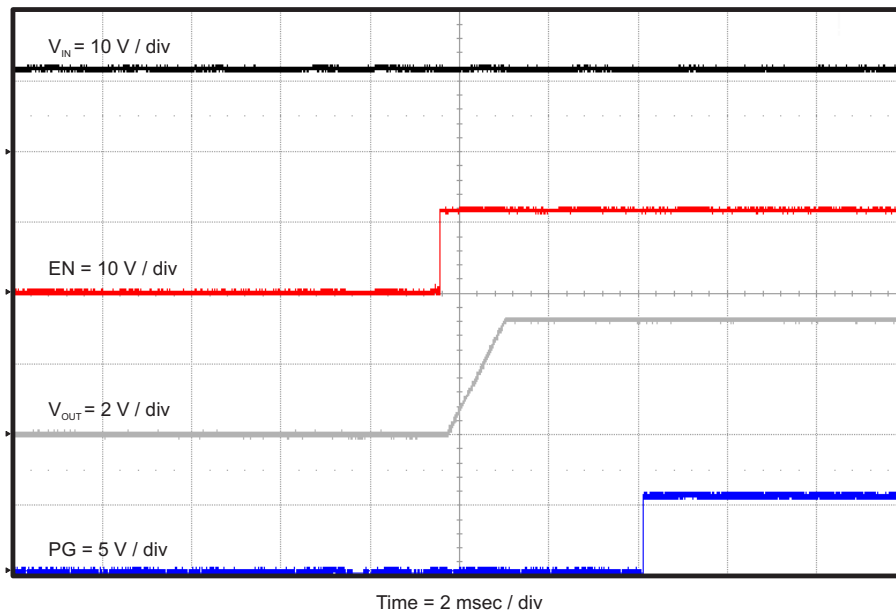


Figure 12. TPS65581EVM-575 CH1 Start-Up Relative to EN

5 Board Layout

This section provides a description of the TPS65581EVM-575, board layout, and layer illustrations.

5.1 Layout

The board layout for the TPS65581EVM-575 is shown in [Figure 13](#) through [Figure 17](#).

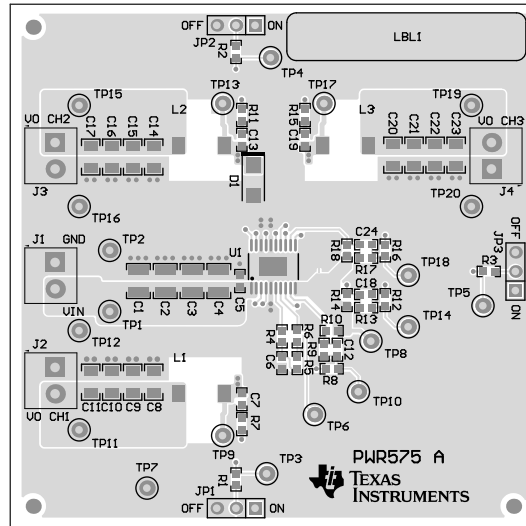


Figure 13. Top Assembly

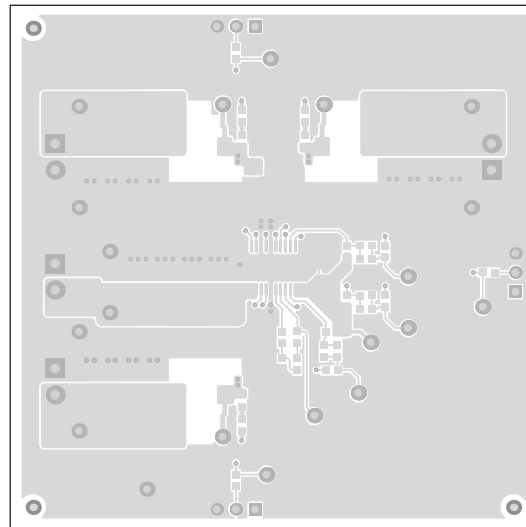


Figure 14. Top Layer

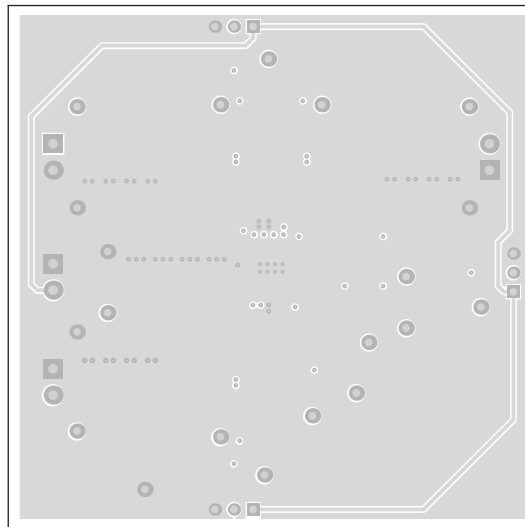


Figure 15. Internal Layer 1

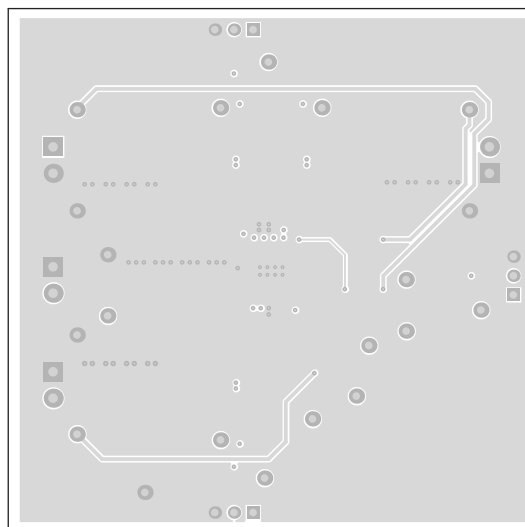


Figure 16. Internal Layer 2

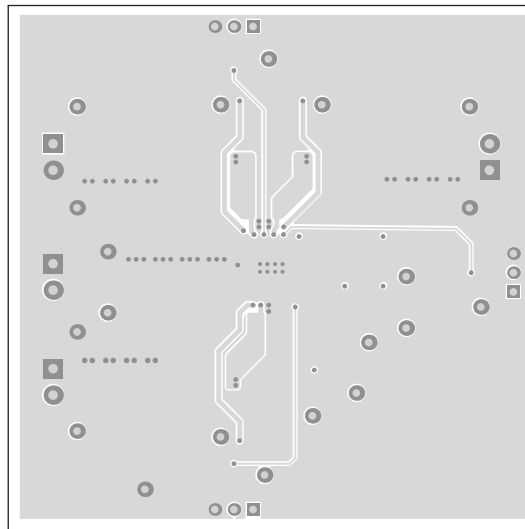


Figure 17. Bottom Layer

6 Schematic, Bill of Materials, and Reference

6.1 Schematic

Figure 18 is the schematic for the TPS65581EVM-575.

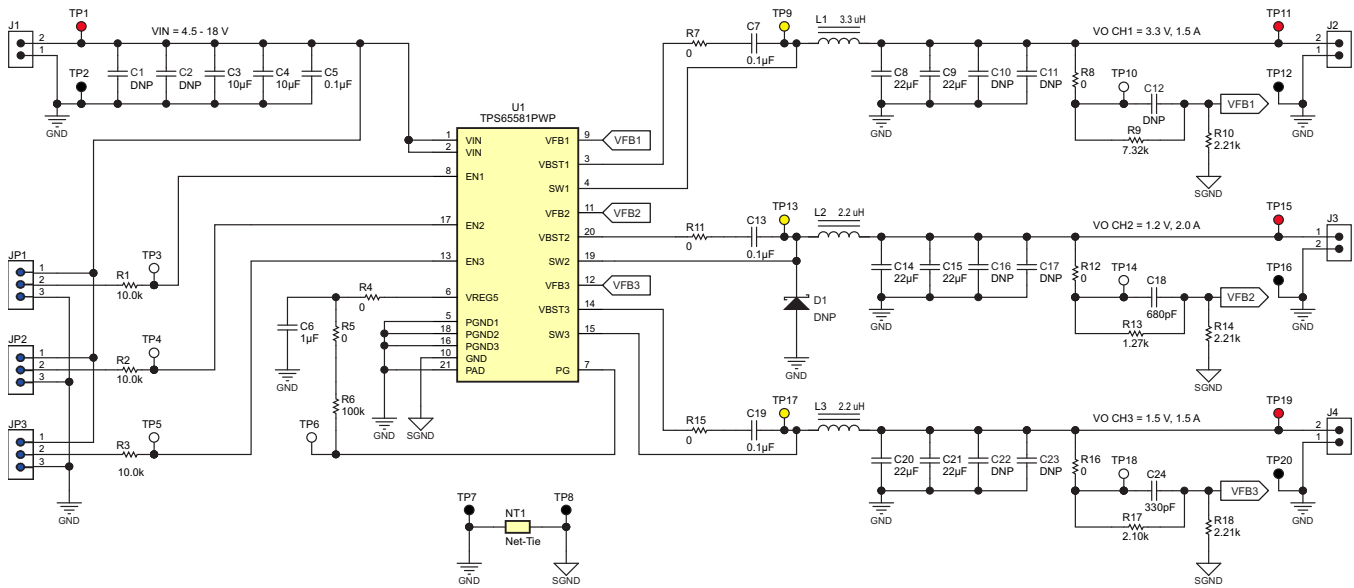


Figure 18. TPS65581EVM-575 Schematic Diagram

6.2 Bill of Materials

Table 5. Bill of Materials

Designator	Quantity	Value	Description	Package Reference	Part Number	Manufacturer
PCB1	1		Printed Circuit Board		PWR575	Any
C3, C4	2	10 μ F	CAP, CERM, 10uF, 25V, +/-10%, X5R, 1210	1210	GRM32DR61E106KA12L	MuRata
C5, C7, C13, C19	4	0.1 μ F	CAP, CERM, 0.1uF, 25V, +/-10%, X5R, 0603	0603	GRM188R61E104KA01D	MuRata
C6	1	1 μ F	CAP, CERM, 1uF, 10V, +/-10%, X5R, 0603	0603	GRM185R61A105KE36D	MuRata
C8, C9, C14, C15, C20, C21	6	22 μ F	CAP, CERM, 22uF, 10V, +/-10%, X5R, 1206	1206	GRM31CR61A226KE19L	MuRata
C18	1	680 pF	CAP, CERM, 680pF, 50V, +/-10%, X7R, 0603	0603	GRM188R71H681KA01D	MuRata
C24	1	330 pF	CAP, CERM, 330pF, 50V, +/-10%, X7R, 0603	0603	GRM188R71H331KA01D	MuRata
J1, J2, J3, J4	4		Terminal Block, 6A, 3.5mm Pitch, 2-Pos, TH	7.0x8.2x6.5mm	ED555/2DS	On-Shore Technology, Inc.
JP1, JP2, JP3	3	1x3	Header, TH, 100mil, 1x3, Gold plated, 230 mil above insulator	PBC03SAAN	PBC03SAAN	Sullins Connector Solutions
L1	1	3.3 μ H	Inductor, Power Line, Magnetic Shielded, \pm 30%	6.9x7.2 mm	CLF7045T-3R3N	TDK
L2, L3	2	2.2 μ H	Inductor, Power Line, Magnetic Shielded, \pm 30%	6.9x7.2 mm	CLF7045T-2R2N	TDK
R1, R2, R3	3	10.0k	RES, 10.0k ohm, 1%, 0.1W, 0603	0603	CRCW060310K0FKEA	Vishay-Dale
R4, R5, R7, R8, R11, R12, R15, R16	8	0	RES, 0 ohm, 5%, 0.1W, 0603	0603	CRCW06030000Z0EA	Vishay-Dale
R6	1	100k	RES, 100k ohm, 1%, 0.1W, 0603	0603	CRCW0603100KFKEA	Vishay-Dale
R9	1	7.32k	RES, 7.32k ohm, 1%, 0.1W, 0603	0603	CRCW06037K32FKEA	Vishay-Dale
R10, R14, R18	3	2.21k	RES, 2.21k ohm, 1%, 0.1W, 0603	0603	CRCW06032K21FKEA	Vishay-Dale
R13	1	1.27k	RES, 1.27k ohm, 1%, 0.1W, 0603	0603	CRCW06031K27FKEA	Vishay-Dale
R17	1	2.10k	RES, 2.10k ohm, 1%, 0.1W, 0603	0603	CRCW06032K10FKEA	Vishay-Dale
SH-JP1, SH-JP2, SH-JP3	3	1x2	Shunt, 100mil, Gold plated, Black	Shunt	969102-0000-DA	3M
TP1, TP11, TP15, TP19	4	Red	Test Point, Miniature, Red, TH	Red Miniature Testpoint	5000	Keystone
TP2, TP7, TP8, TP12, TP16, TP20	6	Black	Test Point, Miniature, Black, TH	Black Miniature Testpoint	5001	Keystone
TP3, TP4, TP5, TP6, TP10, TP14, TP18	7	White	Test Point, Miniature, White, TH	White Miniature Testpoint	5002	Keystone
TP9, TP13, TP17	3	Yellow	Test Point, Miniature, Yellow, TH	Yellow Miniature Testpoint	5004	Keystone
U1	1		4.5V to 18V Input 1.5A/2A/1.5A Triple Synchronous Step-Down SWIFT Converter, PWP0020B	PWP0020B	TPS65581PWP	Texas Instruments
C1, C2	0	10uF	CAP, CERM, 10uF, 25V, +/-10%, X5R, 1210	1210	GRM32DR61E106KA12L	MuRata
C10, C11, C16, C17, C22, C23	0	22uF	CAP, CERM, 22uF, 10V, +/-10%, X5R, 1206	1206	GRM31CR61A226KE19L	MuRata
C12	0		CAP, CERM,		Used in BOM report	Used in BOM report
D1	0	30V	Diode, Schottky, 30V, 3A, SMA	SMA	B330A-13-F	Diodes Inc.

6.3 Reference

TPS65581: 4.5V to 18V Input 1.5A, 2.5A, 1.5A Triple Synchronous Step-Down Converter data sheet ([SLVSC38](#))

IMPORTANT NOTICE

Texas Instruments Incorporated and its subsidiaries (TI) reserve the right to make corrections, enhancements, improvements and other changes to its semiconductor products and services per JESD46, latest issue, and to discontinue any product or service per JESD48, latest issue. Buyers should obtain the latest relevant information before placing orders and should verify that such information is current and complete. All semiconductor products (also referred to herein as "components") are sold subject to TI's terms and conditions of sale supplied at the time of order acknowledgment.

TI warrants performance of its components to the specifications applicable at the time of sale, in accordance with the warranty in TI's terms and conditions of sale of semiconductor products. Testing and other quality control techniques are used to the extent TI deems necessary to support this warranty. Except where mandated by applicable law, testing of all parameters of each component is not necessarily performed.

TI assumes no liability for applications assistance or the design of Buyers' products. Buyers are responsible for their products and applications using TI components. To minimize the risks associated with Buyers' products and applications, Buyers should provide adequate design and operating safeguards.

TI does not warrant or represent that any license, either express or implied, is granted under any patent right, copyright, mask work right, or other intellectual property right relating to any combination, machine, or process in which TI components or services are used. Information published by TI regarding third-party products or services does not constitute a license to use such products or services or a warranty or endorsement thereof. Use of such information may require a license from a third party under the patents or other intellectual property of the third party, or a license from TI under the patents or other intellectual property of TI.

Reproduction of significant portions of TI information in TI data books or data sheets is permissible only if reproduction is without alteration and is accompanied by all associated warranties, conditions, limitations, and notices. TI is not responsible or liable for such altered documentation. Information of third parties may be subject to additional restrictions.

Resale of TI components or services with statements different from or beyond the parameters stated by TI for that component or service voids all express and any implied warranties for the associated TI component or service and is an unfair and deceptive business practice. TI is not responsible or liable for any such statements.

Buyer acknowledges and agrees that it is solely responsible for compliance with all legal, regulatory and safety-related requirements concerning its products, and any use of TI components in its applications, notwithstanding any applications-related information or support that may be provided by TI. Buyer represents and agrees that it has all the necessary expertise to create and implement safeguards which anticipate dangerous consequences of failures, monitor failures and their consequences, lessen the likelihood of failures that might cause harm and take appropriate remedial actions. Buyer will fully indemnify TI and its representatives against any damages arising out of the use of any TI components in safety-critical applications.

In some cases, TI components may be promoted specifically to facilitate safety-related applications. With such components, TI's goal is to help enable customers to design and create their own end-product solutions that meet applicable functional safety standards and requirements. Nonetheless, such components are subject to these terms.

No TI components are authorized for use in FDA Class III (or similar life-critical medical equipment) unless authorized officers of the parties have executed a special agreement specifically governing such use.

Only those TI components which TI has specifically designated as military grade or "enhanced plastic" are designed and intended for use in military/aerospace applications or environments. Buyer acknowledges and agrees that any military or aerospace use of TI components which have **not** been so designated is solely at the Buyer's risk, and that Buyer is solely responsible for compliance with all legal and regulatory requirements in connection with such use.

TI has specifically designated certain components as meeting ISO/TS16949 requirements, mainly for automotive use. In any case of use of non-designated products, TI will not be responsible for any failure to meet ISO/TS16949.

Products

Audio	www.ti.com/audio
Amplifiers	amplifier.ti.com
Data Converters	dataconverter.ti.com
DLP® Products	www.dlp.com
DSP	dsp.ti.com
Clocks and Timers	www.ti.com/clocks
Interface	interface.ti.com
Logic	logic.ti.com
Power Mgmt	power.ti.com
Microcontrollers	microcontroller.ti.com
RFID	www.ti-rfid.com
OMAP Applications Processors	www.ti.com/omap
Wireless Connectivity	www.ti.com/wirelessconnectivity

Applications

Automotive and Transportation	www.ti.com/automotive
Communications and Telecom	www.ti.com/communications
Computers and Peripherals	www.ti.com/computers
Consumer Electronics	www.ti.com/consumer-apps
Energy and Lighting	www.ti.com/energy
Industrial	www.ti.com/industrial
Medical	www.ti.com/medical
Security	www.ti.com/security
Space, Avionics and Defense	www.ti.com/space-avionics-defense
Video and Imaging	www.ti.com/video

TI E2E Community

e2e.ti.com