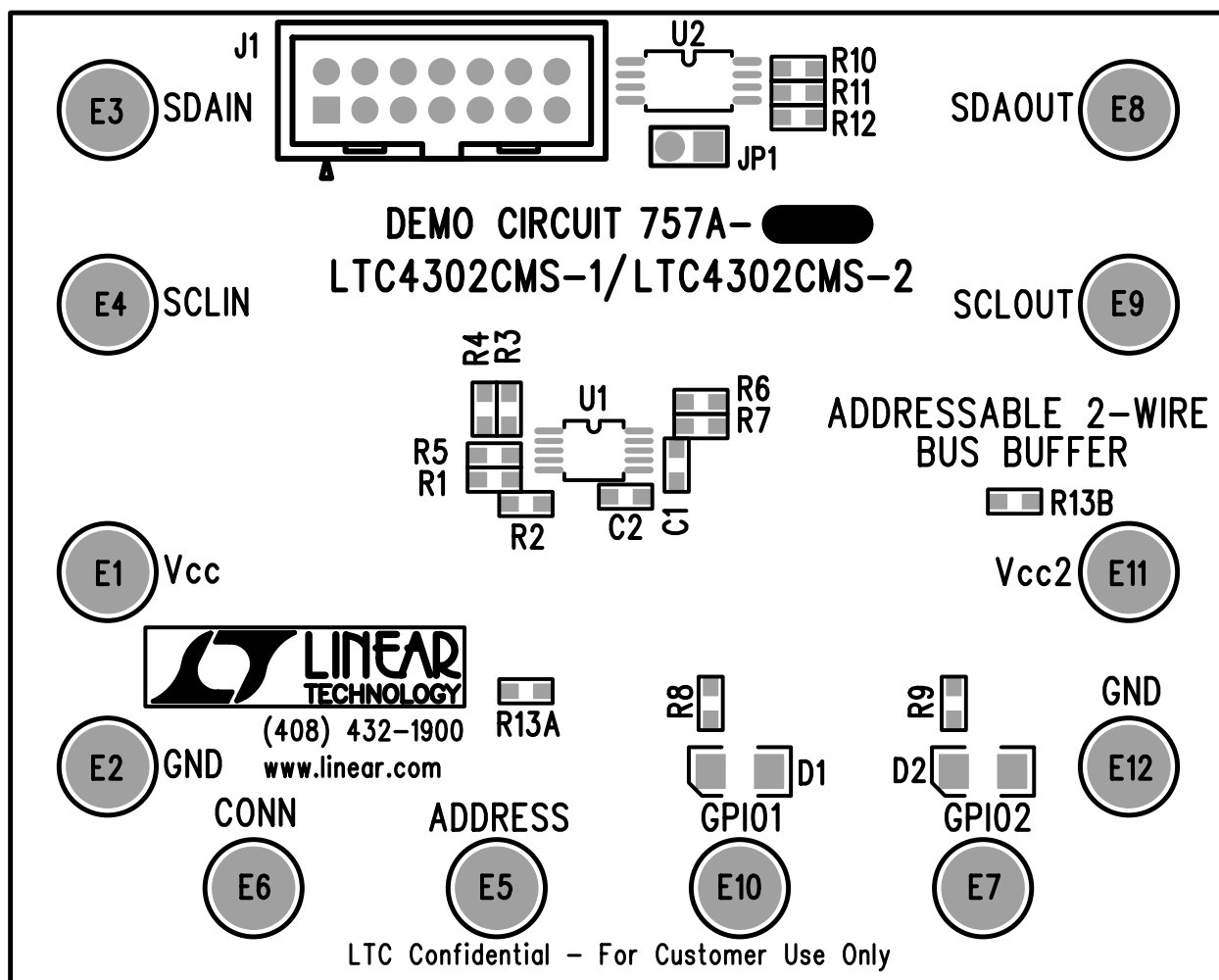


VERSIONS

DC757A-A: U1 = LTC4302CMS-1
 INCLUDE: D2, E7, R9, R13A.
 DO NOT STUFF: C2, E11, R13B.

DC757A-B: U1 = LTC4302CMS-2
 INCLUDE: C2, E11, R13B
 DO NOT STUFF: D2, E7, R9, R13A.



COMPANY LINEAR TECHNOLOGY CORPORATION			
TITLE A/W, LTC4302CMS-1/2		NO. DC757A	REV 2
		TOP SILKSCREEN	
DSNR: MEI	SHT OF 8		DATE: 03/30/04